

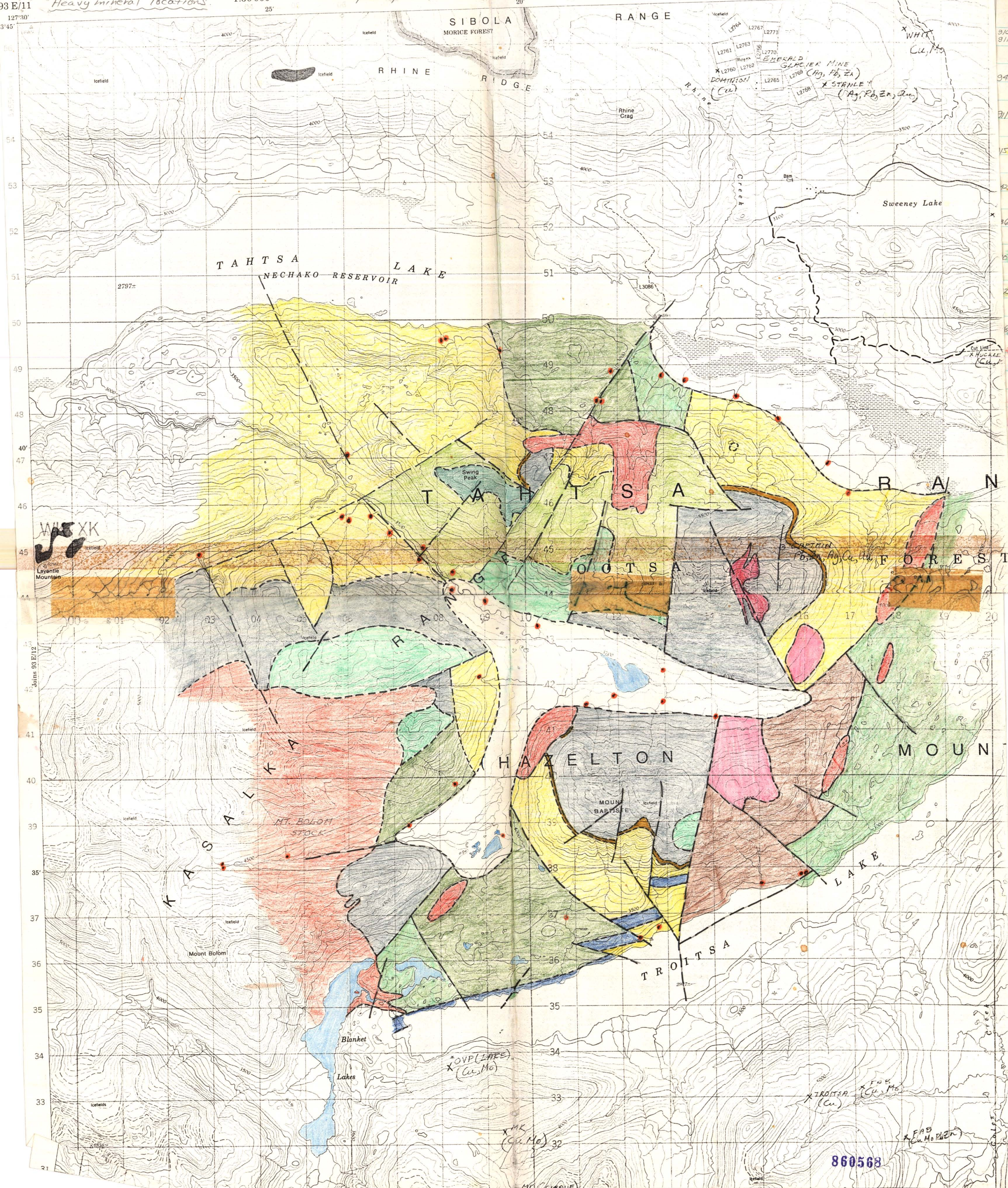
93 E/11
127°30'
53°45'

Heavy mineral locations

1:50 000

93E/11 (part)

CANADA
June 93 E/11
15'



310 311	JJf	Telkwa Formation (andesitic fragmental)	} Hazelton Gp.
945	mJs	Ashman Formation (marine sed.)	
91	IKv	amygdaloidal basalt unit	} Skeena Gp.
15	IKs	marine sed. unit	
92	lukc	basal pebble conglom. unit	} Kasaska Gp.
96	lukf	felsic fragmental unit	
9	ukp	porphyritic andesite unit	
2	ukl	lahar unit	
8	uktb	jointed basalt flows	} Kasaska Int.
7	ukdr	microdiorite	
6	ukgp	qtz porphyry	
5	ukpgd	porphyritic granodiorite	} Bulkley Int.
4	ukgd	qtz-diorite, diorite	

860568