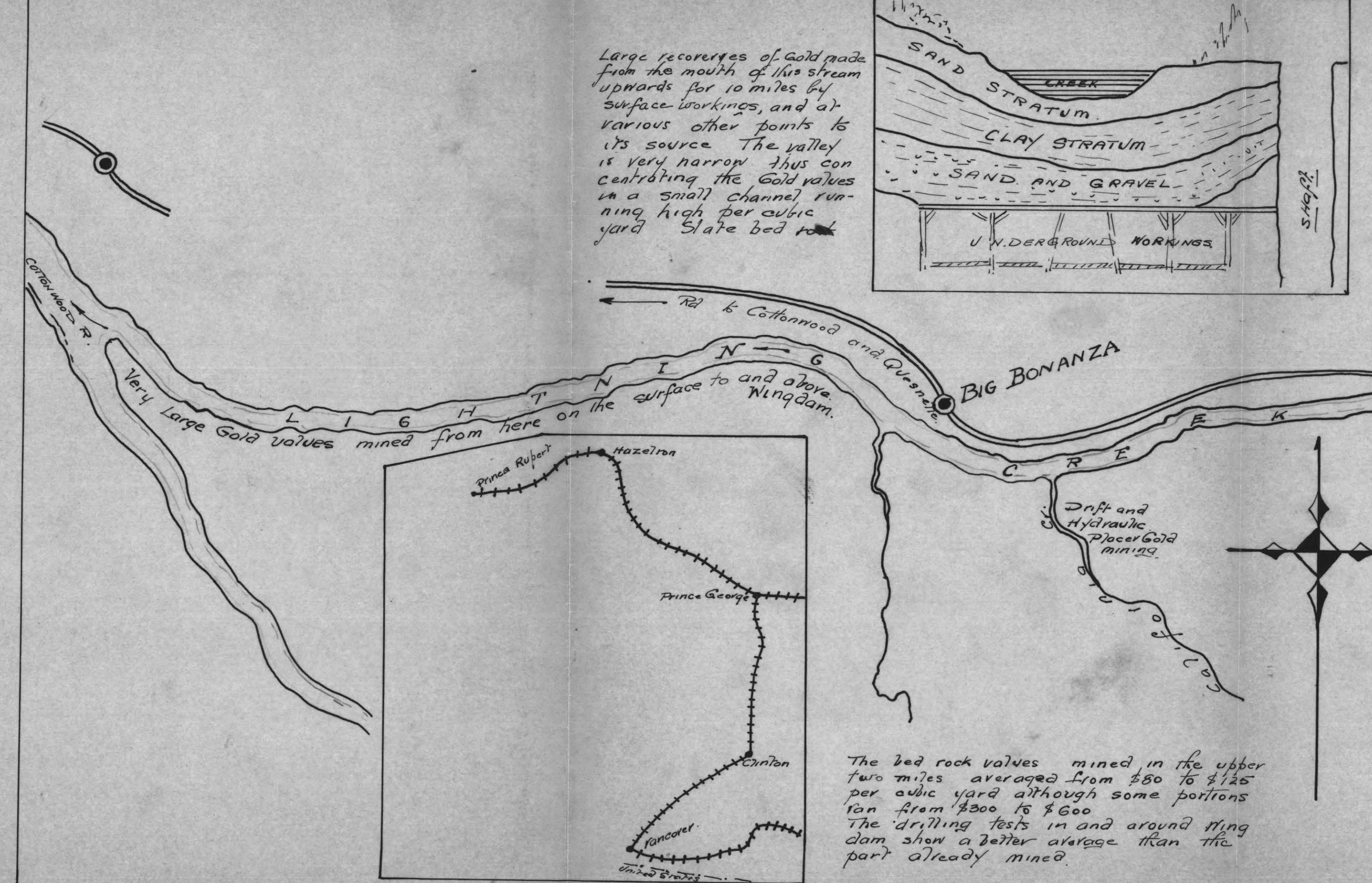
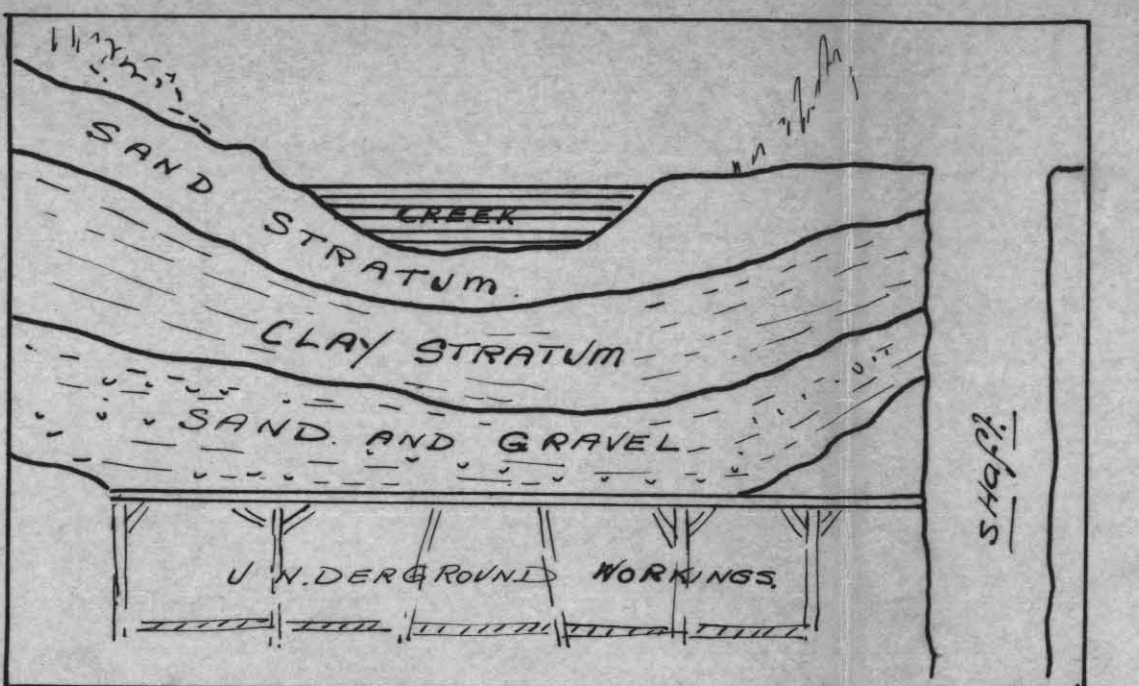


MAP OF LOWER AND CENTRAL BRITISH COLUMBIA. Wingdam (see above) location of Company's main works about 250 miles from U.S. LINE.



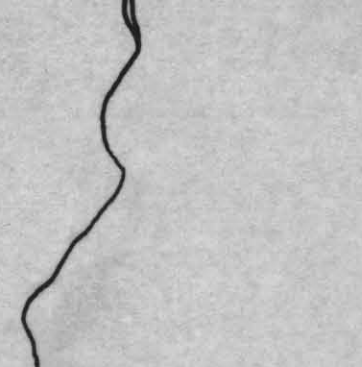
Large recoveries of gold made from the mouth of this stream upwards for 10 miles by surface workings, and at various other points to its source. The valley is very narrow thus concentrating the gold values in a small channel running high per cubic yard. Slate bed rock.



Length of Creek 25 miles.

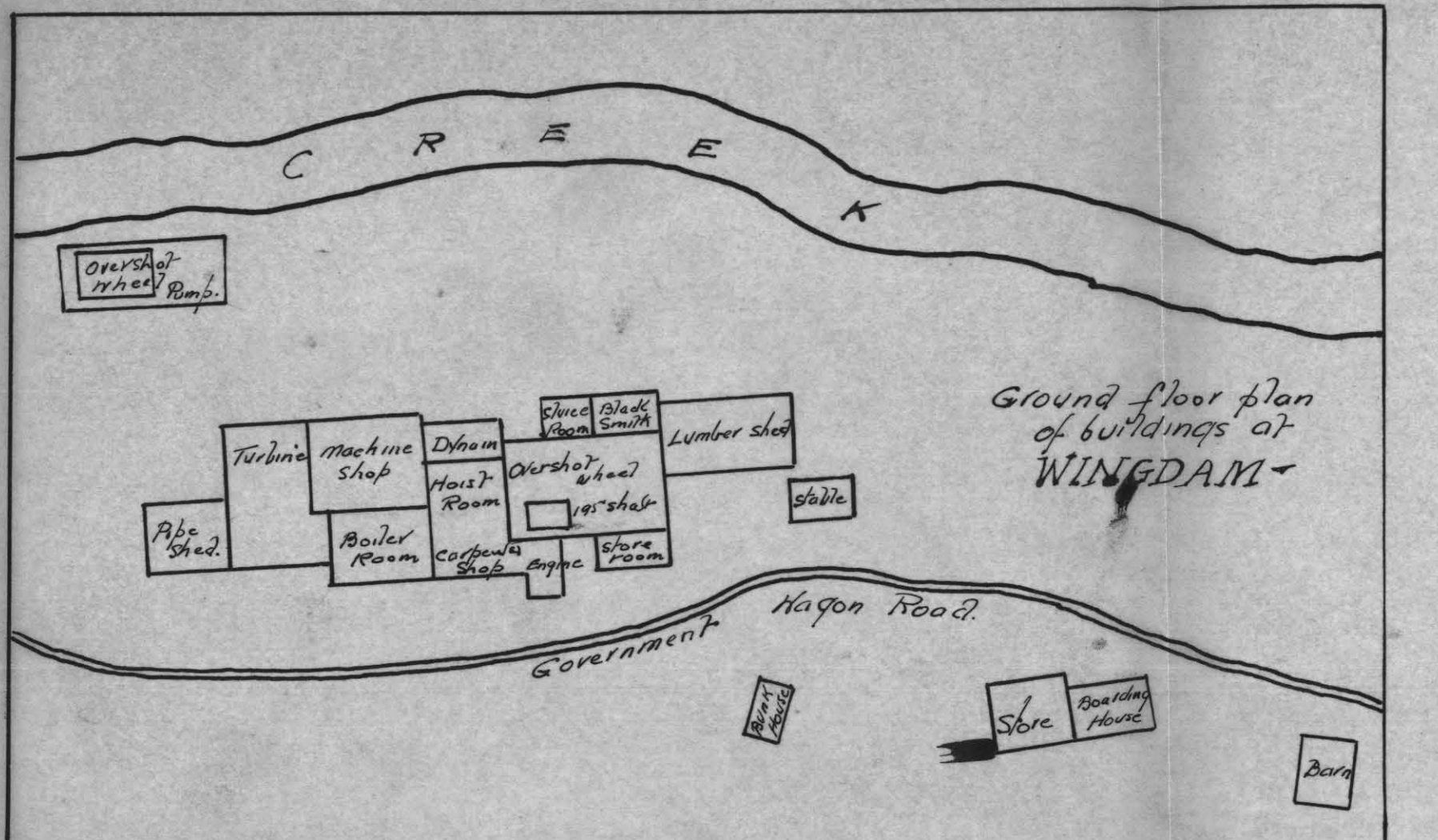
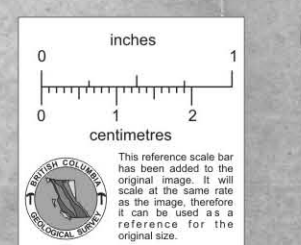
WINGDAM

BIG BONANZA



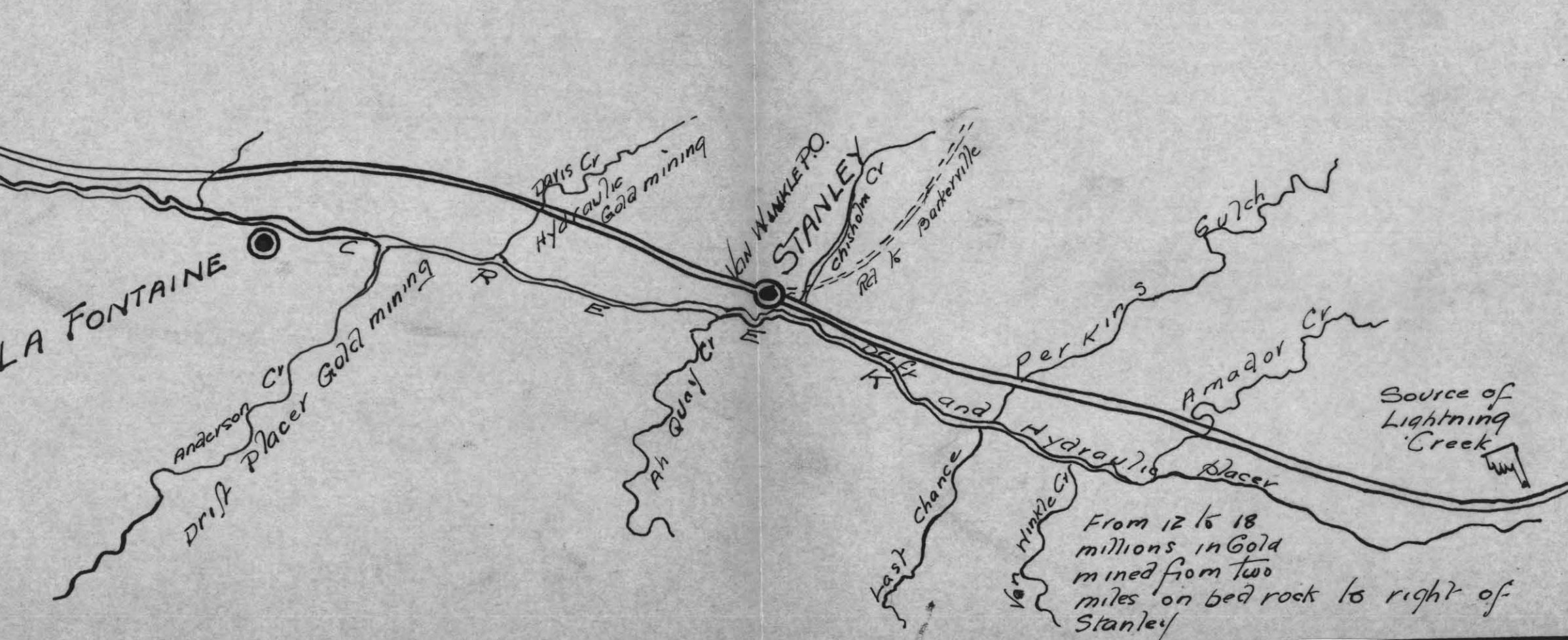
MAP OF  
**LIGHTNING CREEK A GOLD STREAM**  
CENTRAL BRITISH COLUMBIA

which has produced about \$20,000,000. from about 10 per cent of its mineable area with drawings showing surrounding streams, cross and longitudinal sections of LIGHTNING Creek and drift mining, also sketch maps showing R R Connections.



Ground floor plan of buildings at WINGDAM

Every one of the twenty five tributary streams of Lightning Creek are gold bearing. According to the CANADIAN GEOLOGICAL SURVEY the Creek is situated in the centre of the richest gold producing district in the Province.



From 12 to 18 millions in Gold mined from two miles on bed rock to right of Stanley