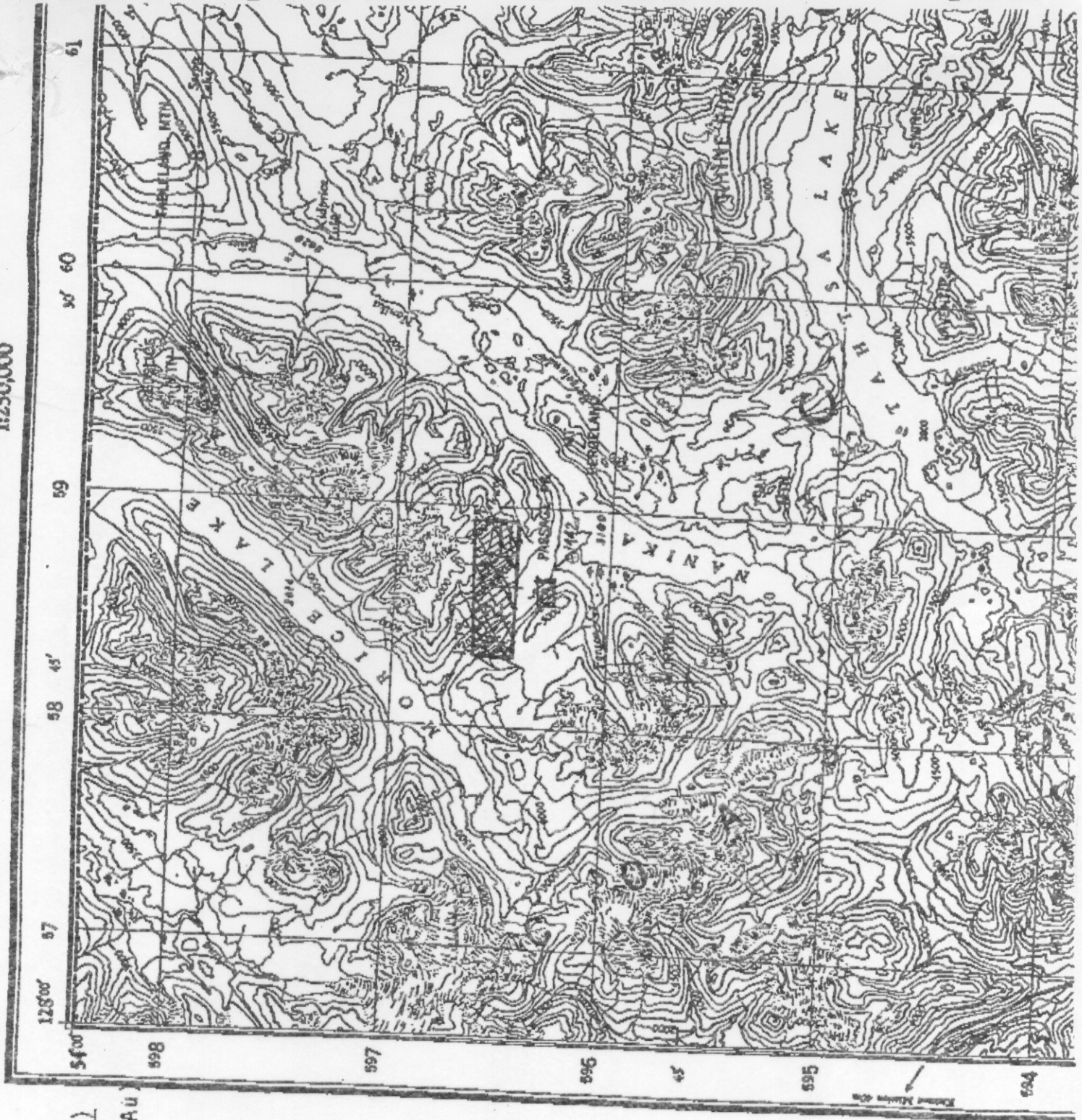


1:250,000

93E



RACE 1-3 CLAIMS (44 UNITS)

Sample Results: (>10 ppb Au)

RGS Stream Sediment

<u>Sample Number</u>	<u>Au ppb</u>	<u>Repeat</u>
1379	12	
1442	160	
		209

860507

RACE 1-3 CLAIMS (44 UNITS)Location

Whitesail Lake map sheet
 NTS 93E/13E
 Approximately 115km southwest of Houston, B.C.

Sample Results:

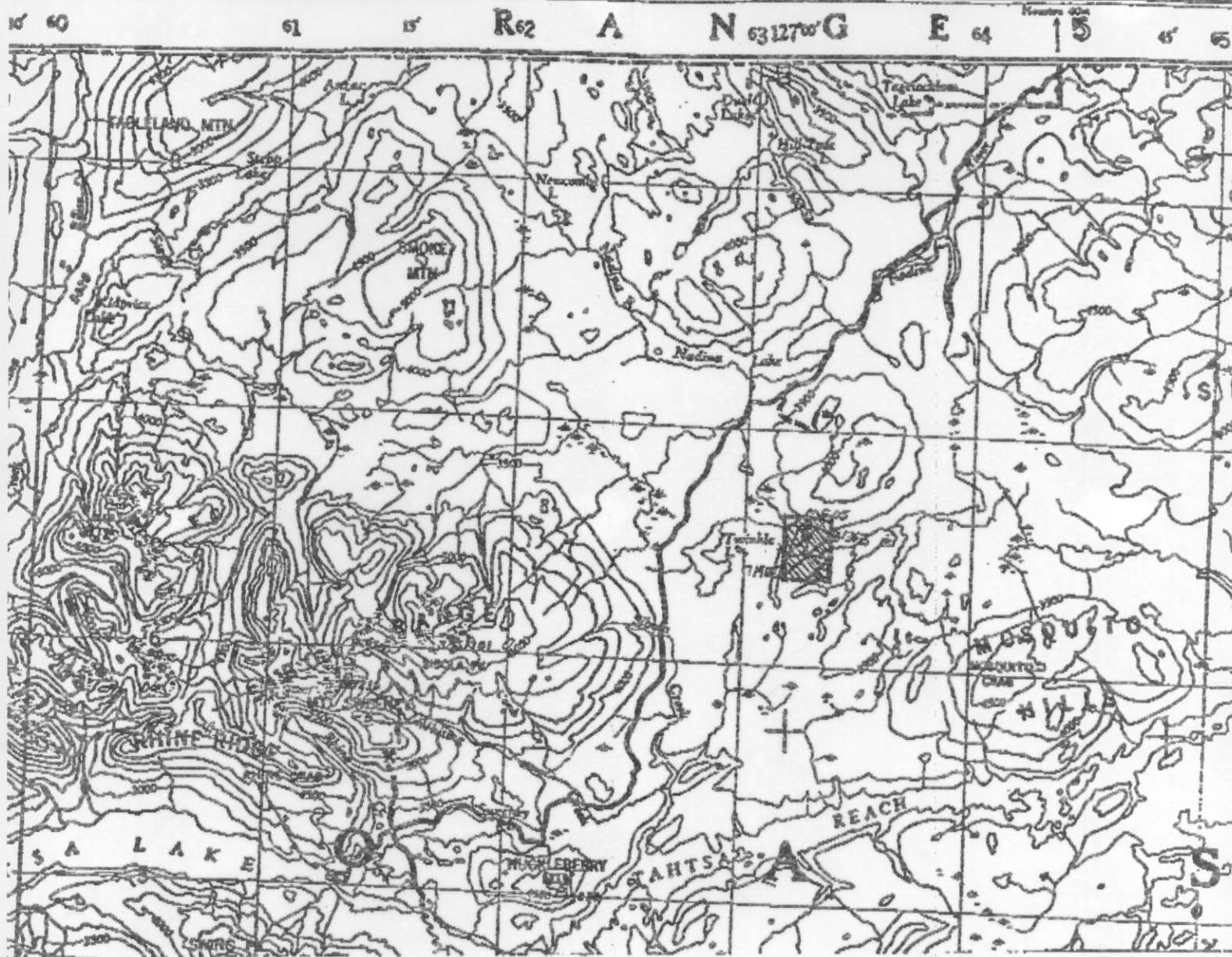
(>10 ppb Au)

<u>Sample Number</u>	<u>Type</u>	<u>Au(ppb)</u>	<u>Repeat</u>
1379	RGS Stream Sediment	12	
1442	RGS Stream Sediment	160	209

Geology:

(From Open File 708)
 Mesozoic and/or Cenozoic quartz diorite and
 granodiorite which form the Coast Mountains.
 Immediately to the north is Lower Jurassic
 Telkwa Formation of the Hazelton Group
 consisting of mixed volcanics and a Tertiary
 intrusive of varying composition.

CANADA



NEEDLE CLAIMS (20 UNITS)

0 5 10 km

Sample Results: (>10 ppb Au)

<u>Sample Number</u>	<u>Type</u>	<u>Au(ppb)</u>
1363	RGS Stream Sediment	10
1748	RGS Lake Sediment	36
MF-05	Rock (Float)	4150

NEEDLE CLAIMS (20 UNITS)Location:

Whitesail Lake map sheet
NTS 93E/14E, 15W
Approximately 85km south of Houston, B.C.,
accessible by logging road

Sample Results:

(>10 ppb Au)

<u>Sample Number</u>	<u>Type</u>	<u>Au(ppb)</u>
1363	RGS Stream Sediment	10
1748	RGS Lake Sediment	36
MF-05	Rock (Float)	4150

Geology:

(From Open File 708)
Principally overburden covered. Immediately to the north and south is the Middle Jurassic Smithers Formation of the Hazelton Group, consisting primarily of volcanic sediments, tuff and breccia with minor conglomerate, limestone and flows. Immediately to the north is the Cretaceous Skeena Group consisting of sandstone, siltstone and shale.