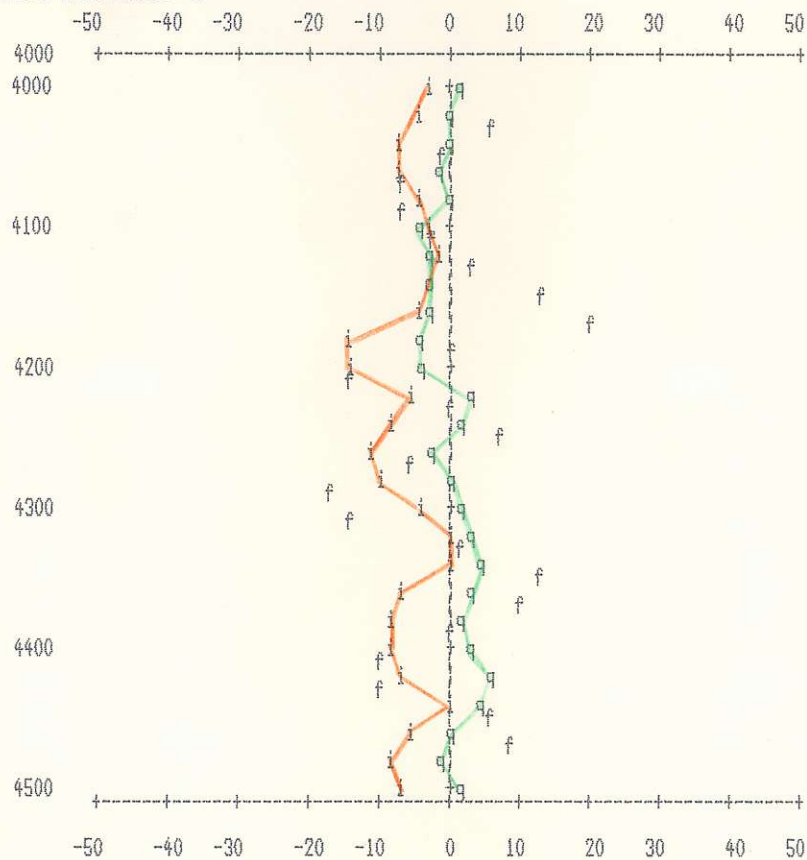


860389

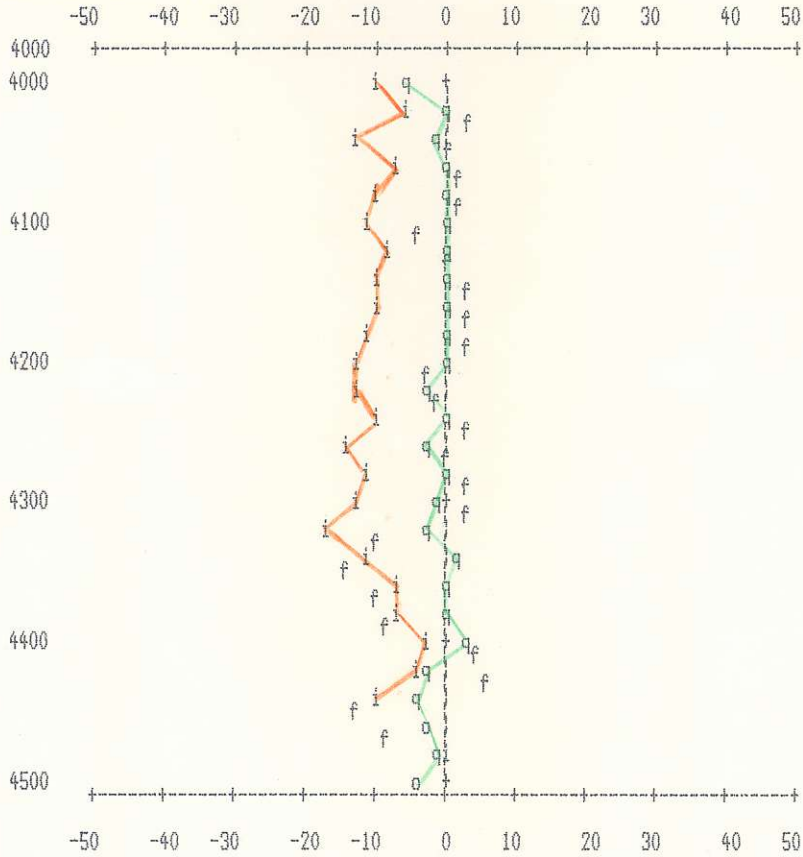
jake VLF-EM
Line: L6200N
Date: 90/07/23
Station interval = 1 print position

vlf ip:- i OUT OF RANGE IP:- I
vlf qd:- q OUT OF RANGE QD:- Q
vlf ff:- f OUT OF RANGE FF:- F
MULTI-DATA POINT:- o



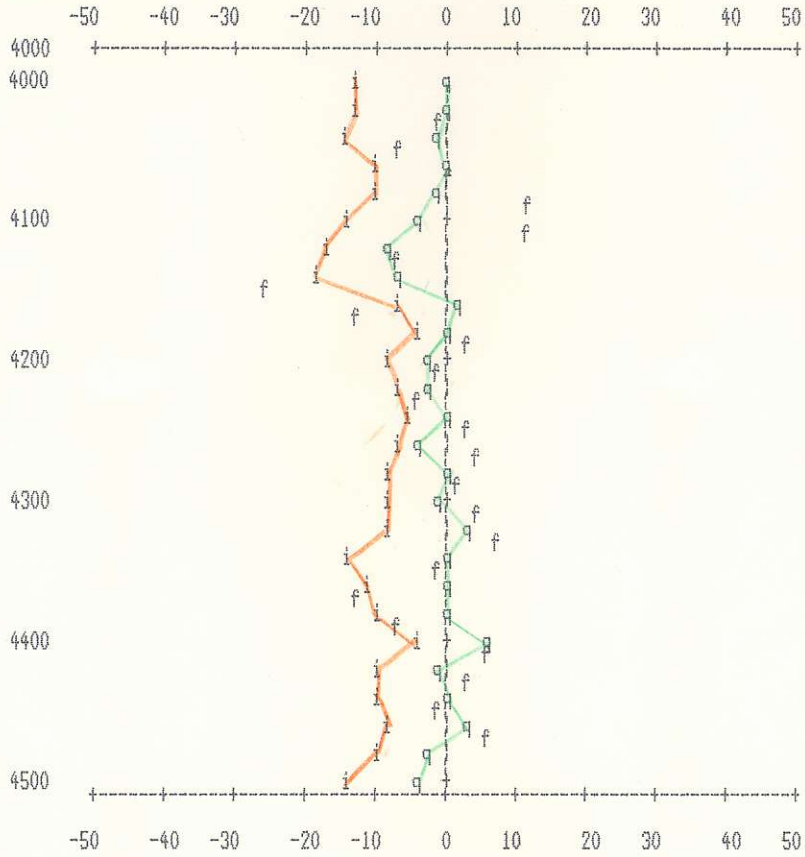
jake VLF-EM
Line: L6000N
Date: 90/07/23
Station interval = 1 print position

vlf ip:- i OUT OF RANGE IP:- I
vlf qd:- q OUT OF RANGE QD:- Q
vlf ff:- f OUT OF RANGE FF:- F
MULTI-DATA POINT:- o



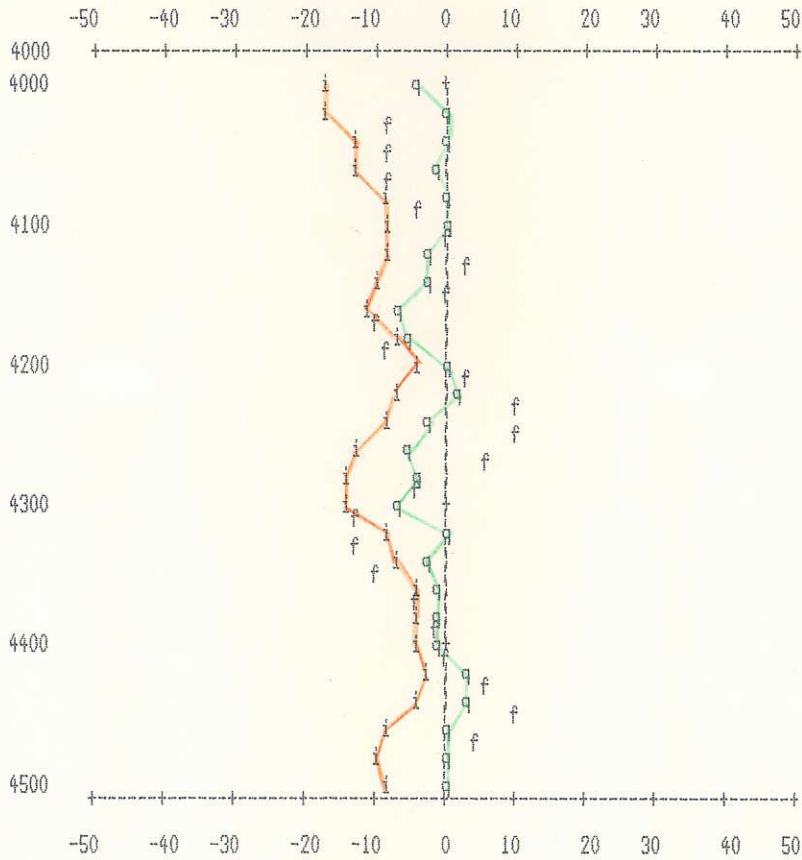
jake VLF-EM
Line: L5800N
Date: 90/07/23
Station interval = 1 print position

vlf ip:- i OUT OF RANGE IP:- I
vlf qd:- q OUT OF RANGE QD:- Q
vlf ff:- f OUT OF RANGE FF:- F
MULTI-DATA POINT:- o



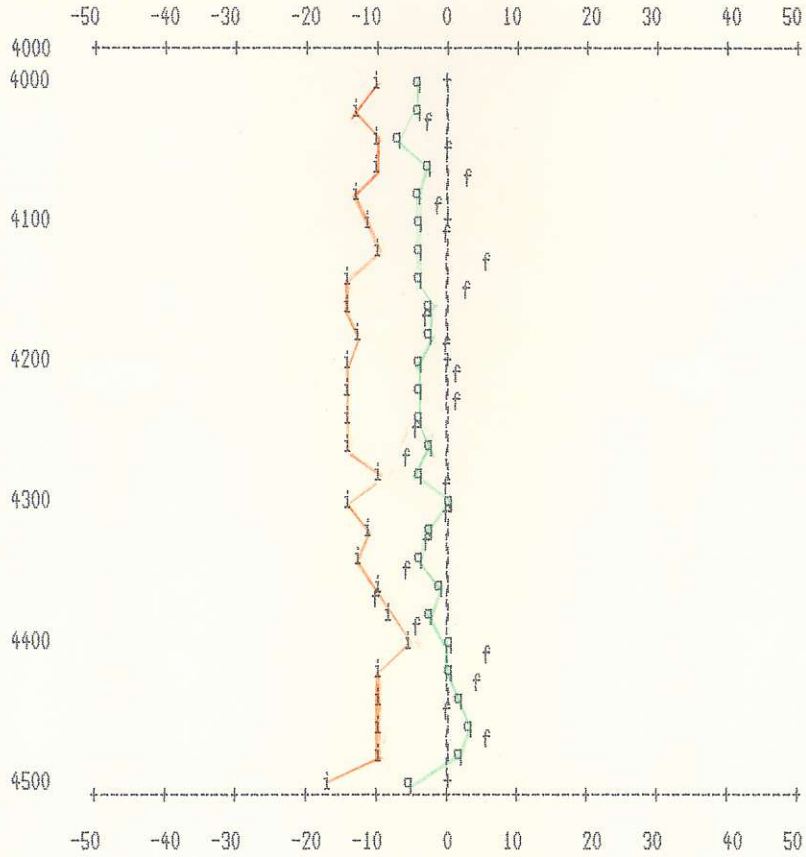
jake VLF-EM
Line: L5600N
Date: 90/07/23
Station interval = 1 print position

vlf ip:- i OUT OF RANGE IP:- I
vlf qd:- q OUT OF RANGE QD:- Q
vlf ff:- f OUT OF RANGE FF:- F
MULTI-DATA POINT:- o



jake VLF-EM
Line: L5400N
Date: 90/07/23
Station interval = 1 print position

vlf ip:- i OUT OF RANGE IP:- I
vlf qd:- q OUT OF RANGE QD:- Q
vlf ff:- f OUT OF RANGE FF:- F
MULTI-DATA POINT:- o



jake VLF-EM
Line: L5200N
Date: 90/07/23
Station interval = 1 print position

vlf ip:- i OUT OF RANGE IP:- I
vlf qd:- q OUT OF RANGE QD:- Q
vlf ff:- f OUT OF RANGE FF:- F
MULTI-DATA POINT:- o

