

860355

FOX GEOLOGICAL CONSULTANTS LTD.

PROJECT 818

1991 RECONNAISSANCE PROGRAM

WEEDON LAKE AREA, B.C.

CARIBOO MINING DIVISION

BRITISH COLUMBIA

NTS 93J5

by

G. N. Goodall, B.Sc., P. Geo.

and

P. E. Fox, Ph.D., P. Eng.

FOX GEOLOGICAL CONSULTANTS LTD.

1409 - 409 Granville Street

Vancouver, B.C. V6C 1T8

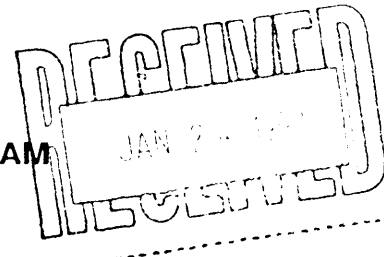
for

Placer Dome Inc.

15th Floor - 1055 Dunsmuir Street

Vancouver, B.C. V7X 1P1

January 16, 1992



and Prince George, B.C. Two types of biogeochemical samples were obtained (i) 500 grams of bark material collected at eye level, (ii) 300 grams of tree top cut from the top 30 cm. of the tree with the aid of a helicopter. Englemann Spruce was selected as the sample medium for the biogeochemical sampling due to its wide dispersion throughout each target area. A total of 385 bark, 80 tree top, 24 silt, four cone and one rock samples were collected from the eight target areas together with 100 kilometres of regional road and field traverses (Figure 3). The tree top samples were collected with the aid of a Bell 206 helicopter (see sample procedure below) at an approximate density of one per 500 metres over the eight targets. Bark samples were taken at eye level. Sample density varied between 100 metres to 200 metres over the eight target regions and at 500-metre spacing on regional traverses. Silt samples were collected from drainages encountered on road traverses and consisted of conventional stream sediment samples sieved on site to -20 mesh. Geochemical data and field notes are given in Appendix I.

Target 91-1 Weedon Creek 93J/10

Target 91-1 (Figure 4) is located directly north of the Weedon 1 to 3 claims and is outlined by a three-kilometre by nine-kilometre, 4500 gamma magnetic high contour. Small outcrops of Takla Group basalts were noted in Weedon Creek. Farther downstream, to the northeast, the creek dissects a 50-metre thick bed of limestone. A total of nine tree top, 58 bark and three silt samples were collected. Logging roads provide access to the south and east areas of the target.

Target 91-2 Muskeg River 93J/11

Target 91-2 (Figure 5) is located adjacent to the Muskeg River and is outlined by a 1500-metre by 1000-metre, 4500 gamma magnetic high contour. Six tree tops and 24 bark samples were collected. Access was by helicopter.

Target 91-3 Merton Hill 93J/6

Target 91-3 (Figure 6) is located on the west side of Merton Hill. It is defined by a linear 4500 gamma magnetic high measuring 5.5 kilometres by 1.5 kilometres. A total of six tree top, 49 bark and three silt samples were collected. Logging roads provide access to a majority of the target area.

Target 91-4 Teapot Mountain 93J/7

Target 91-4 (Figure 7) is located nine kilometres west of Teapot Mountain. A large concentric five-kilometre diameter, 4500 gamma magnetic high contour defines the target. Takla Group volcanoclastic and syenite-monzonite intrusive rocks are mapped in the area. No outcrops were observed during the work program. Five tree top, 54 bark and three silt samples were collected. Logging roads provide access along the west and northwest portions of the target. Three mineral claims totalling 60 units were staked over the area in December, 1991.

Target 91-5 White Mud Creek 93J/12

Target 91-5 (Figure 8) is located west of Carp Lake and is defined by a linear five-kilometre by one-kilometre, 5000 gamma magnetic high contour. A total of 15 tree tops and 12 bark samples were collected from the target area. Five two-post mineral claims were staked concurrently with the sample program. Access was by helicopter.

Target 91-6 Alder Lake 93J/6

Target 91-6 (Figure 6) is defined by a linear 4000-metre by 1200-metre, 4500 gamma magnetic high contour. Ten tree top and 14 bark samples were collected. Access is by road and railway grade.

Target 91-7 Youngs Creek 93J/6

Target 91-7 (Figure 6), located seven kilometres southwest of Target 91-6, is defined by a roughly circular 2500-metre diameter, 4500 gamma magnetic high contour. Eight tree top and 26 bark samples were collected. Access is by road to the north portion of the target area.

Target 91-8 Weedon Lake 93J/11

Target 91-8 (Figure 5) is a large 13-kilometre by five-kilometre oblate 4500 gamma magnetic high contour with a 6400 gamma peak near the centre. It is located immediately southwest of the Weedon 1 to 3 claims. A Cretaceous age syenite stock

Target 91-1

One of the nine tree top samples (sample #30770) collected returned anomalous copper and gold concentrations and ten of the 58 bark samples returned multi-element responses including sample #31932 which contained anomalous concentrations of Cu, Pb, An, As and five other elements beyond threshold levels. The three silt samples were not anomalous.

Target 91-2

Eight of 24 bark samples collected contained anomalous concentrations of silver, arsenic, lead and zinc. One sample (#31340) was anomalous in gold (12 ppb).

Target 91-3

Three of the six tree top samples collected returned anomalous concentrations of arsenic, antimony or gold. Eleven of the 49 bark samples contained multi-element anomalies. The silt samples were not anomalous.

Target 91-4

Two of the five tree top samples collected contained multi-element anomalies. Twenty of the 54 bark samples returned anomalous concentrations of multi-elements. Sample number #31823 returned anomalous concentrations of Mo, Cu, Pb, Ag, As and seven other elements. This target area was staked for Placer Dome in December, 1991.

Target 91-5

Two of the 15 tree top samples collected returned anomalous concentrations of gold. Two of the 12 bark samples returned copper concentrations above threshold levels as well as three other indicator elements. This target was staked concurrently with the sampling program.

Target 91-6

Five of the ten tree top samples contained anomalous concentrations of arsenic, barium and potassium. Six of the 14 bark samples contained multi-element anomalies. Three of these samples are closely spaced and returned anomalous concentrations of Mo, Pb, Ag, As as well as several other elements.

Target 91-7

Four of the eight tree tops returned anomalous concentrations of various elements, including arsenic. Eight of the 26 bark samples were anomalous in gold +/- arsenic concentration. Sample #31834 contained anomalous concentrations of As, Mo, Pb, Ag and six other indicator elements.

Target 91-8

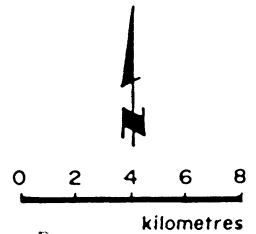
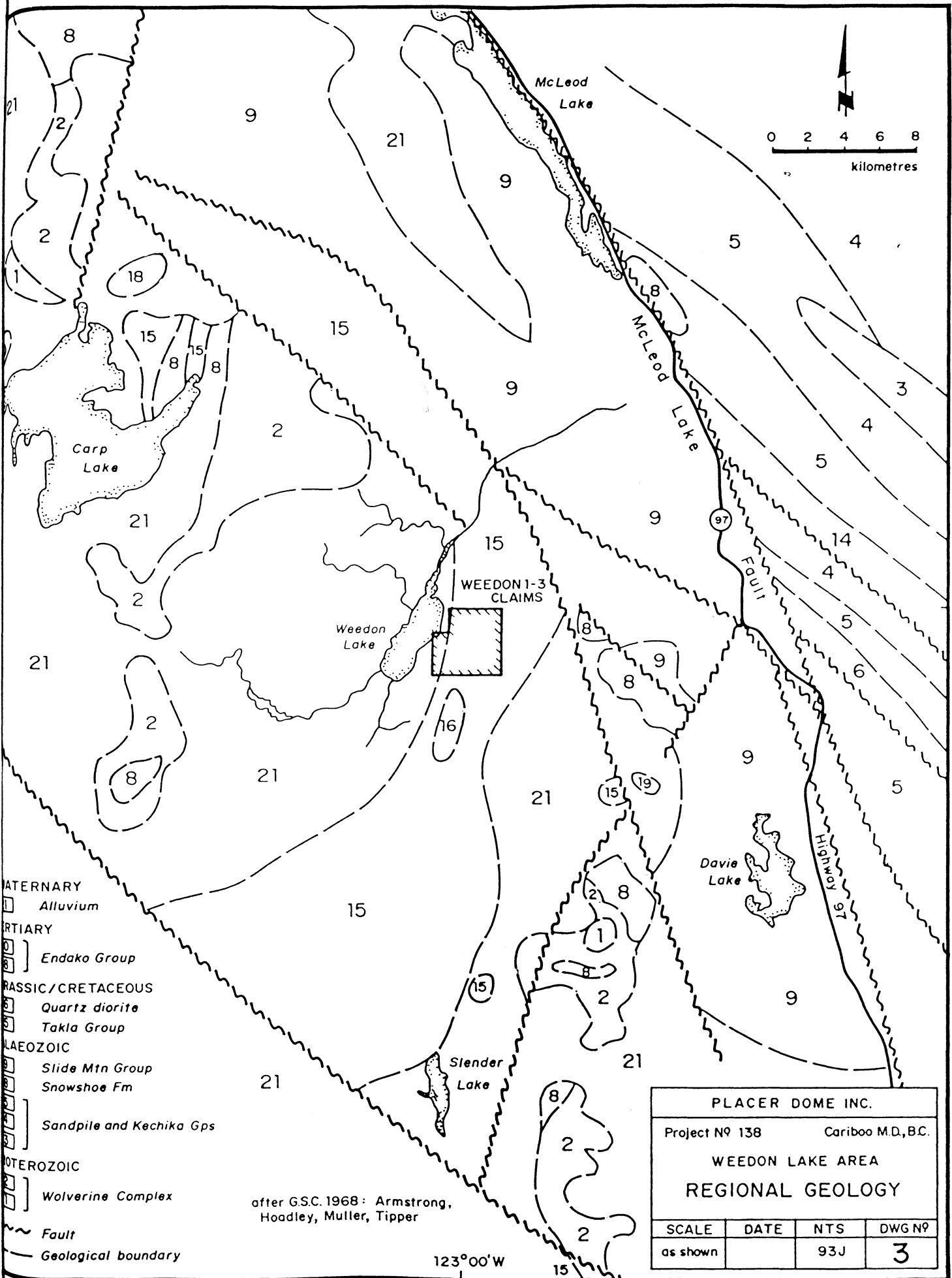
Five of the seven tree top samples collected returned anomalous concentrations of multi-elements including Pb, As, and Au. One bark sample collected north of the target area within the Weedon claim group returned anomalous concentrations of Cu, Pb, Zn, As and two other indicator elements.

Regional Traverses

The regional bark sampling traverses returned several isolated one- or two-sample anomalies. Of particular interest are the Ant Lake-Carp Lake area, area east of Merton Hill (five anomalous samples) and Peculiar Lake area on NTS mapsheet 93J/10 which returned three anomalous bark samples and one silt sample with anomalous concentrations.

DISBURSEMENTS

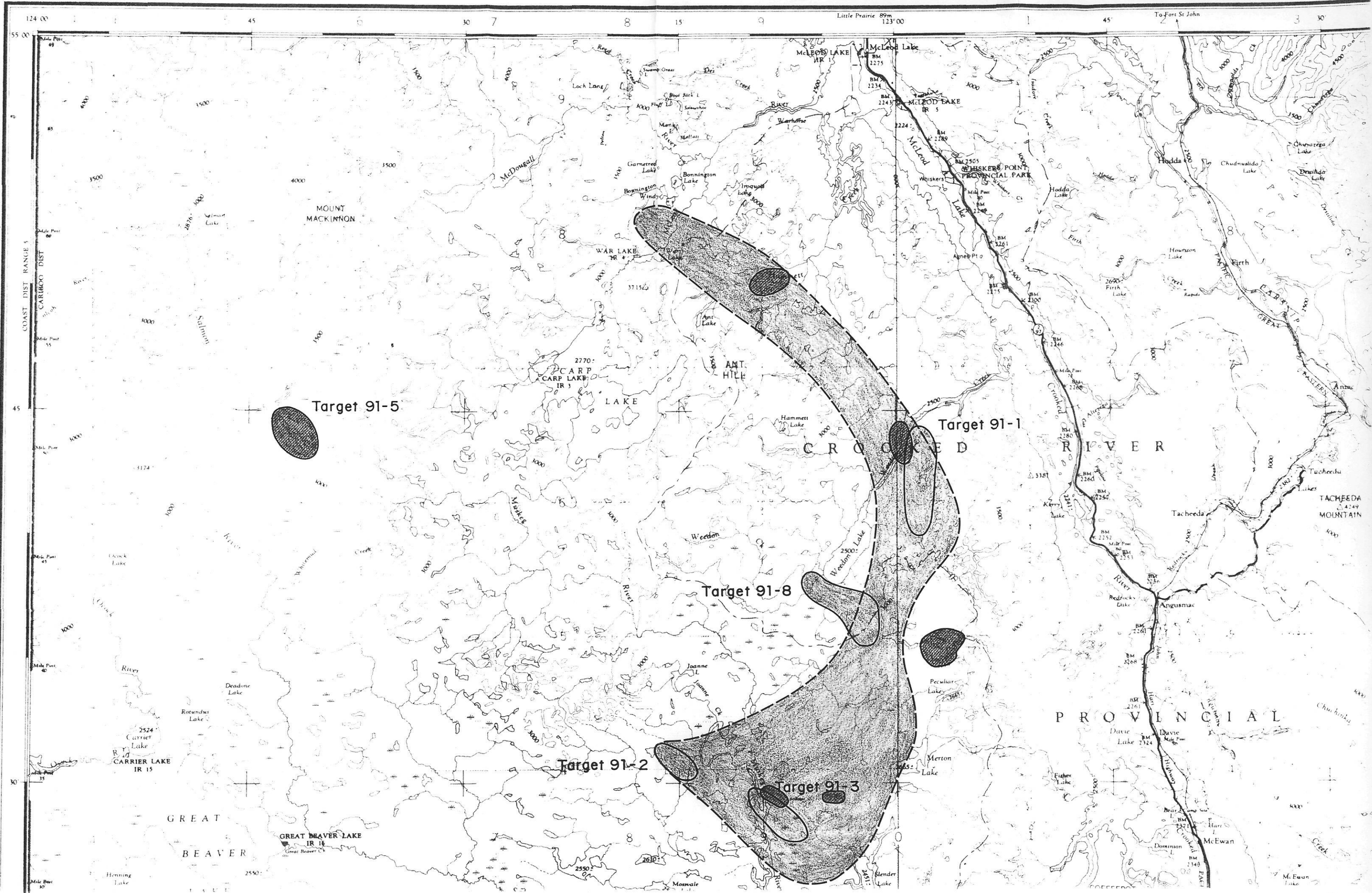
Disbursements to December 31, 1991 for the biogeochemical reconnaissance program total \$94,726.

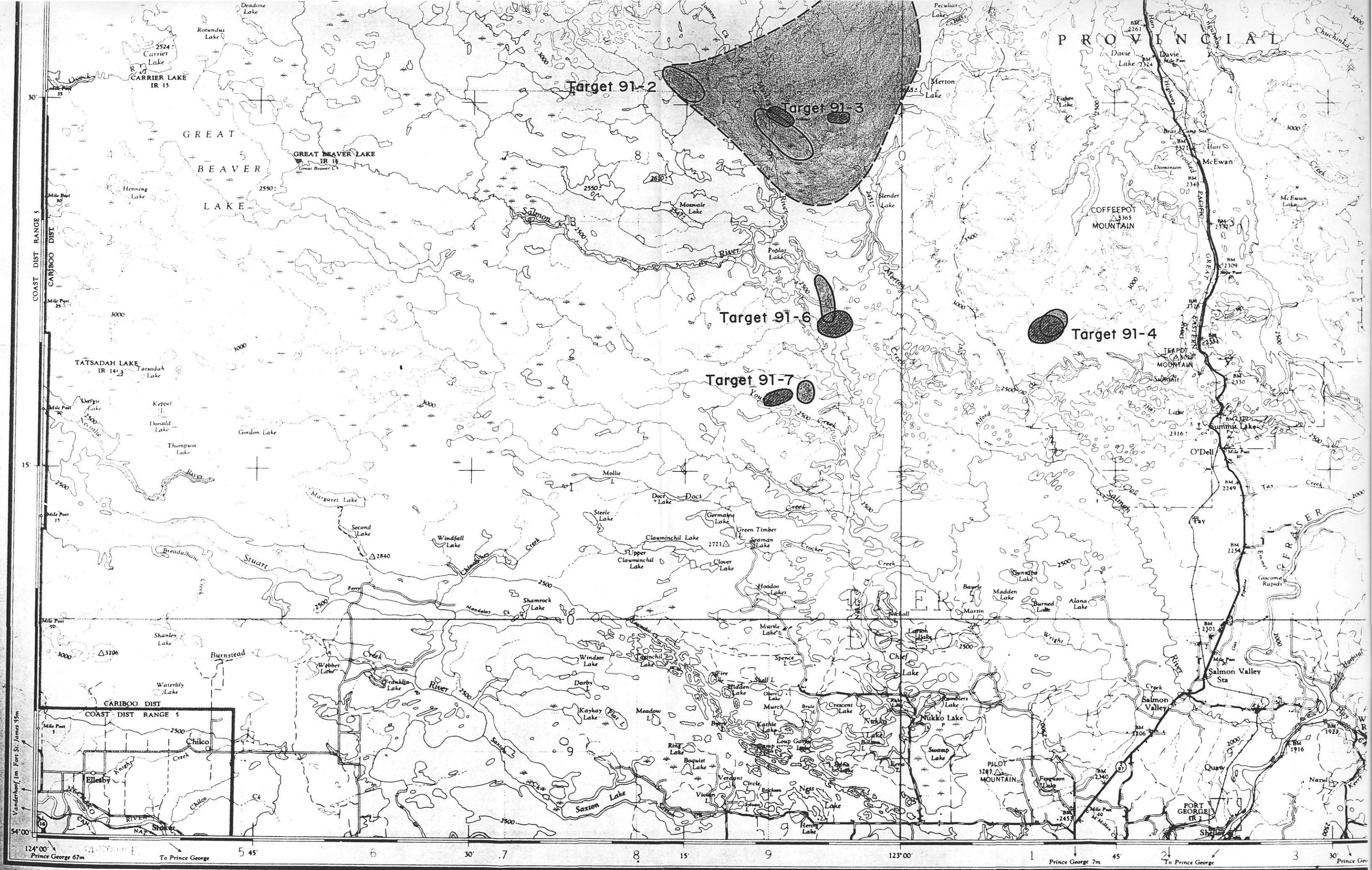


- QUATERNARY**
- [] Alluvium
- TERTIARY**
- [] Endako Group
- TRASSIC/CRETACEOUS**
- [] Quartz diorite
- [] Takla Group
- PALEOZOIC**
- [] Slide Mtn Group
- [] Snowshoe Fm
- [] Sandpile and Kechika Gps
- PROTEROZOIC**
- [] Wolverine Complex
- [] Fault
- [] Geological boundary

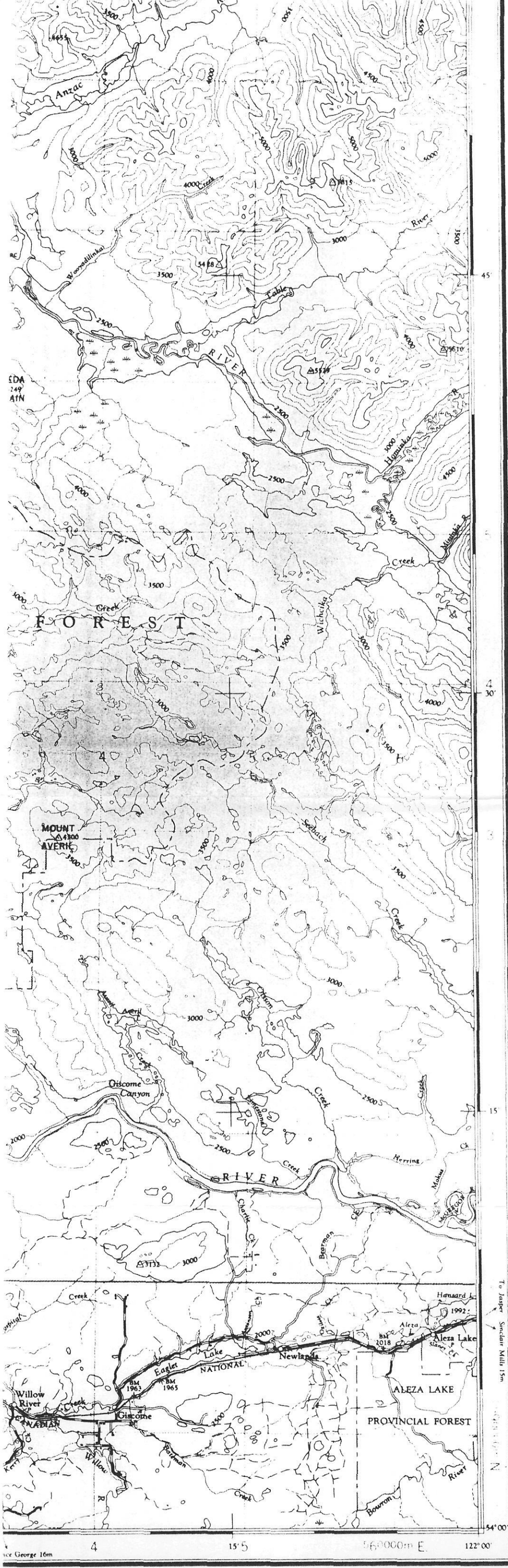
after G.S.C. 1968: Armstrong, Hoadley, Muller, Tipper

| | | | |
|----------------------------|------|--------------------|--------------------|
| PLACER DOME INC. | | | |
| Project N ^o 138 | | Cariboo M.D., B.C. | |
| WEEDON LAKE AREA | | | |
| REGIONAL GEOLOGY | | | |
| SCALE | DATE | NTS | DWG N ^o |
| as shown | | 93J | 3 |





124°00' Prince George 67m To Prince George 5 45' 6 7 8 15' 9 123°00' Prince George 7m 45' To Prince George 3 30' Prince Geo



TARGET AREAS 1991

- 91-1. Weedon Creek
- 91-2 Muskeg River
- 91-3 Merton Hill
- 91-4 Teapot Mountain
- 91-5 White Mud Creek
- 91-6 Alder Lake
- 91-7 Youngs Creek
- 91-8 Weedon Lake



Outline of Takla Group rocks



Anomalous areas which require follow up



Aeromagnetic high target area



Scale



PLACER DOME INC.

PROJECT NO 138 RECCE
 WEEDON LAKE RECCE PROJECT
 BIOGEOCHEMICAL SAMPLING PROGRAMME
 TARGET AREAS 1991

FOX GEOLOGICAL CONSULTANTS LTD.

| SCALE | DATE | FILE | NTS | FIG. NO |
|-----------|-------------|-----------------------|-----|---------|
| 1:250,000 | 16 Jan. '92 | 138- BY: dlp GG | 93J | 3 |

1/2

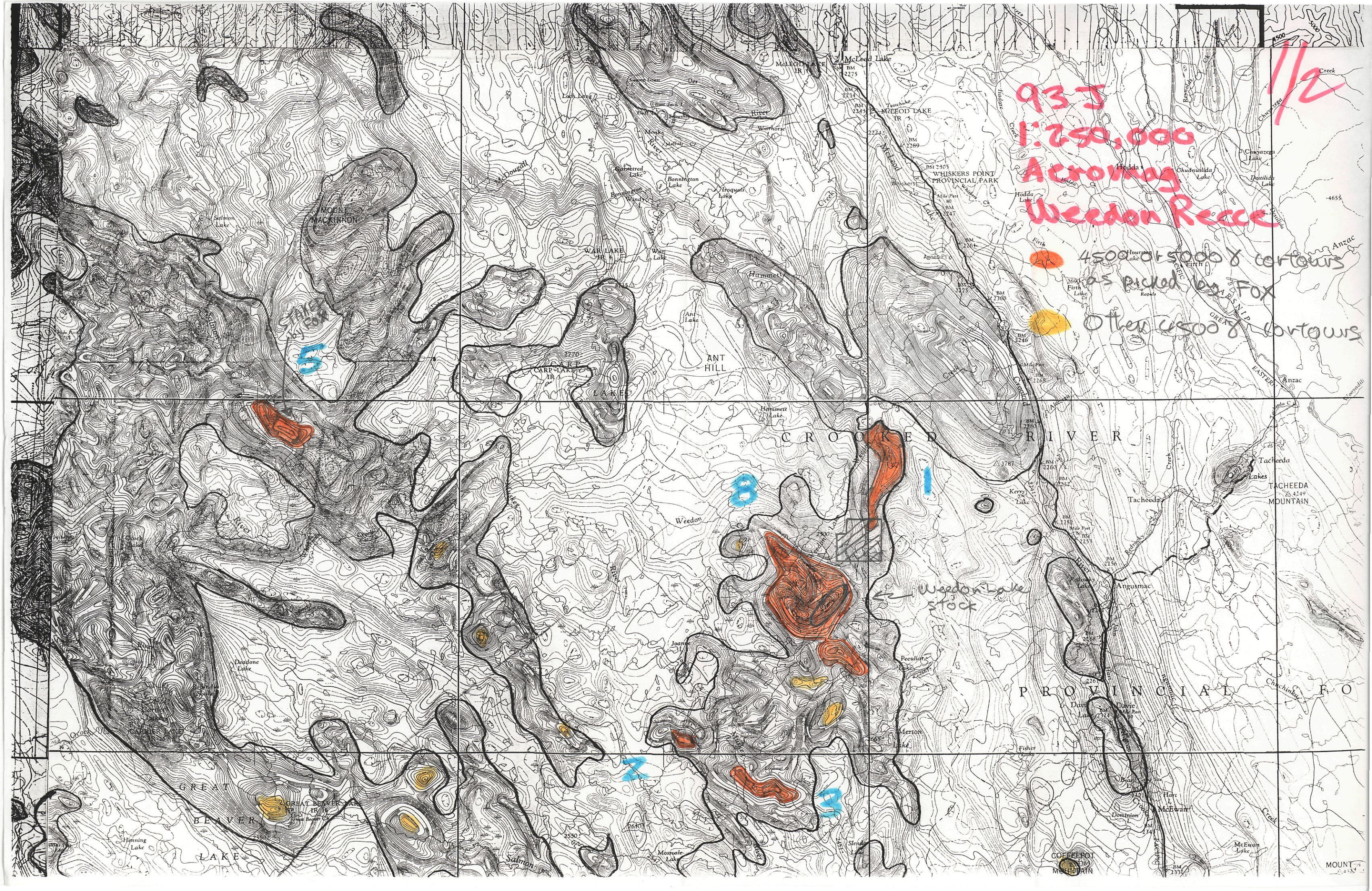
933
1:250,000
Acromag
Weedon Recce

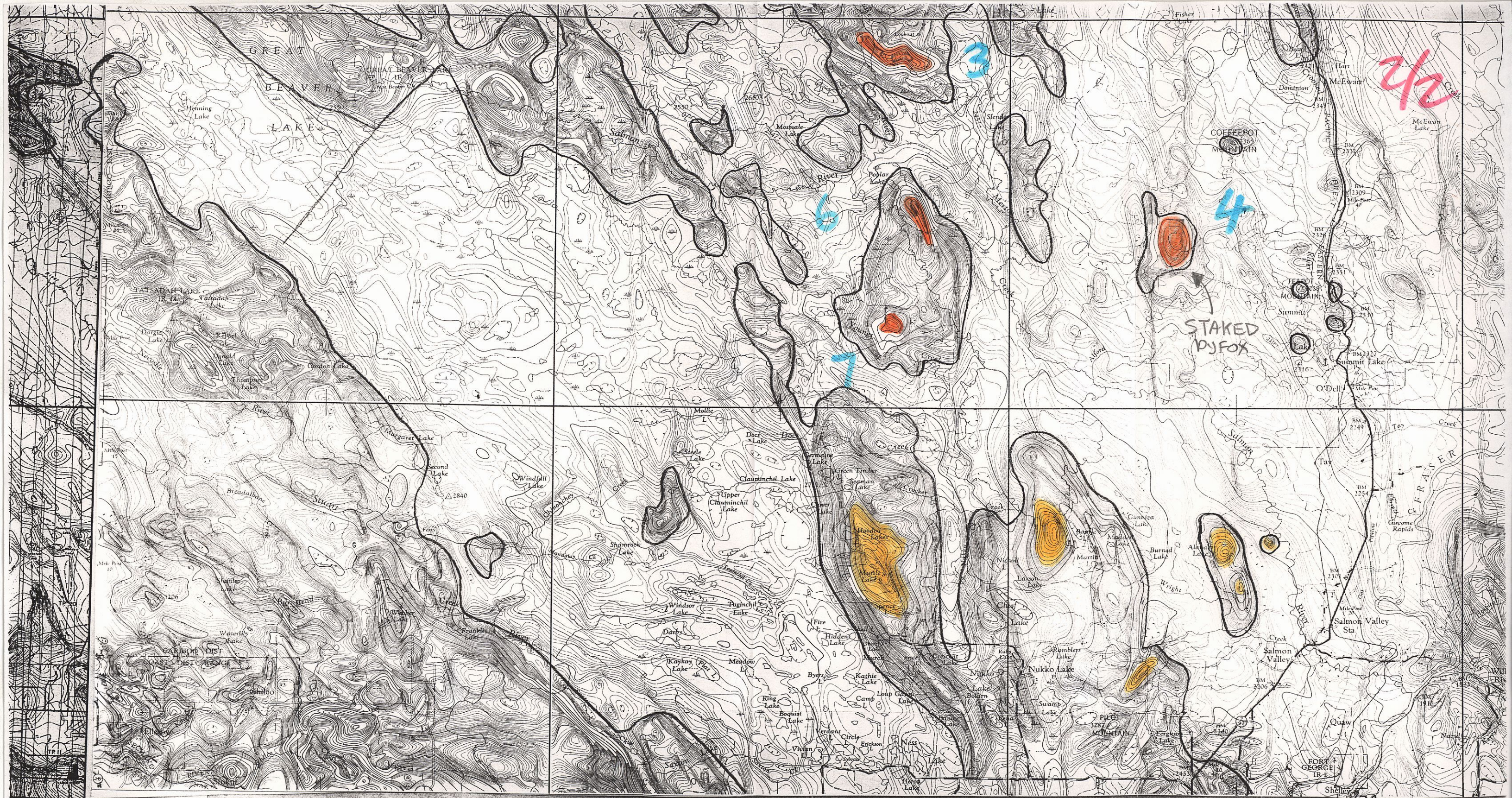
4500 or 5000 ft contours
as picked by FOX
Other 4500 ft contours

5

8

Weedon Lake
Stock





10

11