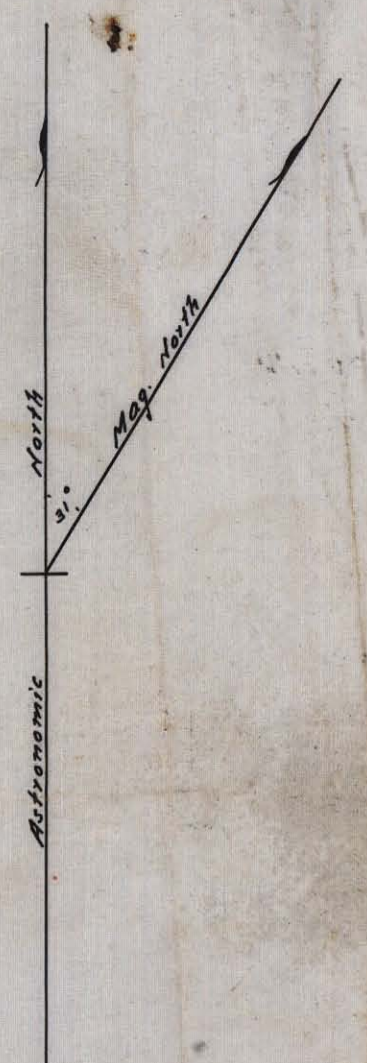
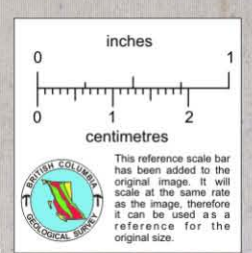


SKETCH PLAN
OF Part OF
W.C. Goffatt Syndicate's Mineral Claims
in
OMINECA MINING DIVISION
being
Lots 4314 - 4323 (inclusive)
Cassiar District
B. C.

Scale 1000' = 1 inch



BURNS LAKE, B.C.
May 12th 1921
V. Schjeldump, B.C.L.S.

CLAIMS VEINS V.A.T.