

*Research*  
**THE BONN TAsah?** 8.00  
 MT

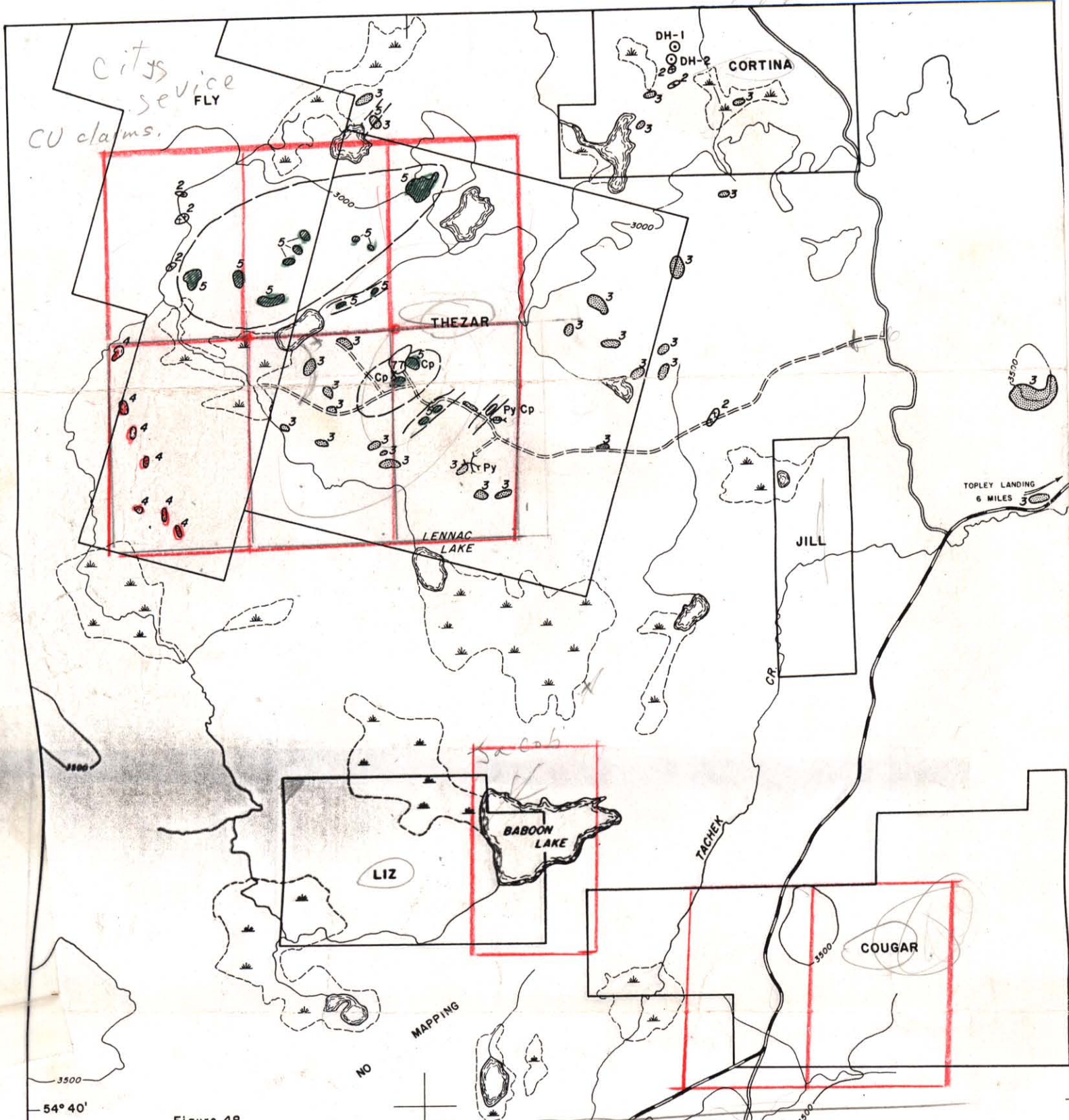


Figure 48

**LENNAC LAKE - REDTOP CREEK AREA**  
**LEGEND**

**TERTIARY**  
 6 BASALT

**UPPER CRETACEOUS**  
 5 QUARTZ - HORNBLende - BIOTITE - FELDSPAR PORPHYRY

**LOWER JURASSIC**  
 4 TOPLEY INTRUSIONS - PORPHYRITIC QUARTZ MONZONITE, FINE GRAINED QUARTZ DIORITE AND QUARTZ MONZONITE, PINK QUARTZ - FELDSPAR PORPHYRY DYKES

**HAZELTON GROUP**  
 3 ANDESITE AND BASALT FLOWS, TUFFS AND BRECCIAS

2 PEBBLE CONGLOMERATE, CHERT, SILTSTONE

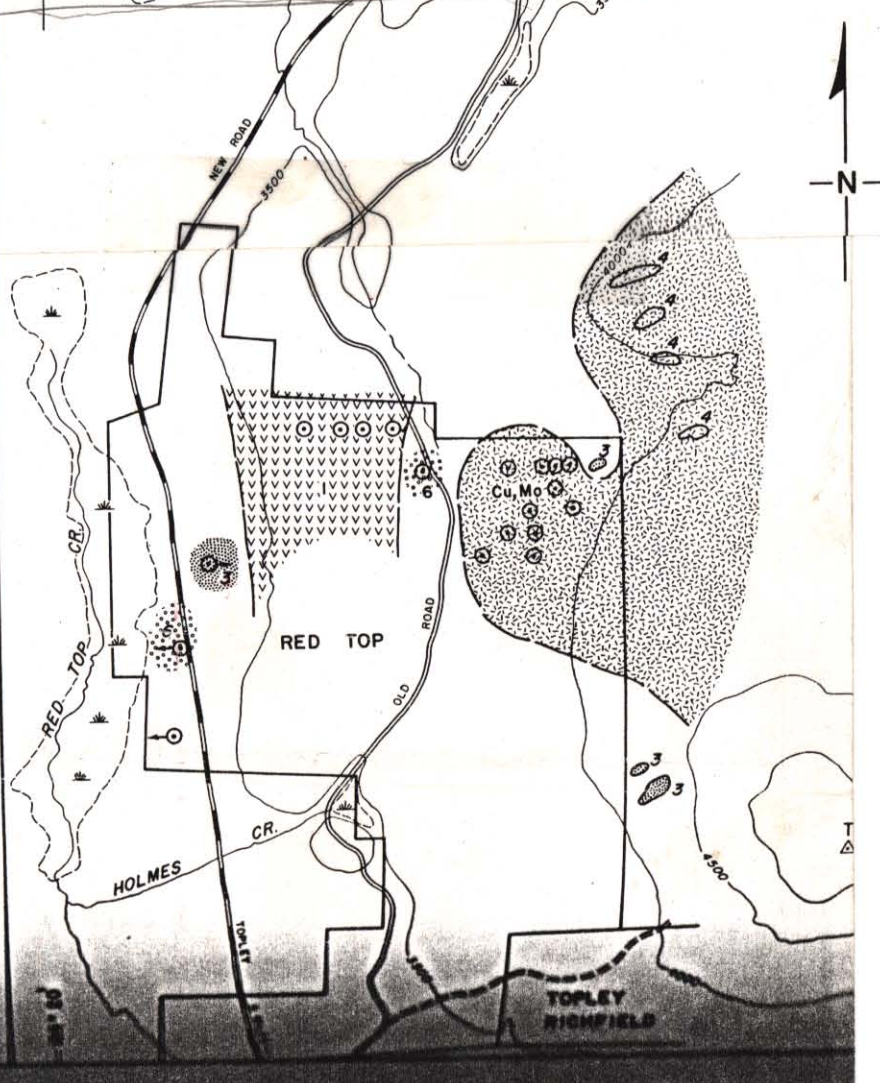
**TRIASSIC AND OLDER**  
 1 GRAPHITIC SILTSTONE, WHITE CRYSTALLINE LIMESTONE

**SYMBOLS**

DRILL HOLE LOCATION - VERTICAL, INCLINED  
 TRENCH  
 OUTCROP AREA  
 GEOLOGICAL CONTACT (APPROXIMATE)  
 ROADS SECONDARY, 4 WHEEL DRIVE  
 CLAIM BOUNDARIES (APPROXIMATE)  
 Cp CHALCOPYRITE  
 Py PYRITE  
 Mo MOLYBDENITE  
 X 77 K-Ar SAMPLE

SCALE 1/2 0 1/2 1 MILES  
 SCALE 500 0 500 1000 1500 METRES

860158



REFERENCES: 3 and Oblio 3, 11, a Assessment Reports

**LENNAC LAKE - REDTOP C**

The area shown on Figure 48 including exploration work was performed in 1972 within the area is good. Trenches within the area is good. Trenches 16 and Topley Landing are in the same direction and numerous breccias shown on Figure 48 is the private property of Topley Landing and Houston, and which was the site of earliest exploration work. Records of earliest exploration work on the Topley Landing area are available in the Topley Landing area. In 1969, a private property of Topley Landing and Houston, and Summit claims) of Topley Landing, and Thezar claims) were located following the reclamation of Cortina, and Thezar claims were located in 1972.

The area lies within the Nechako Plateau of the area ranging between 3,000 and 4,000 feet elevations rise relative to sea level. The area contains numerous deposits of sand and gravel cover. Bedrock exposures are mainly of the Tertiary age. The oldest rocks in the area, graphitic siltstone, were first discovered during drilling on the Red Top area near Fulton Lake to the south of the Lennac Lake. These rocks are of the Hazelton Group rocks, of probable Lower Jurassic age. Some Tertiary basaltic intrusions are present in the area (Fig. 48).

The area is composed of Lower Jurassic rocks, of similar rocks south of the area are two small stocks of quartzite, which intrude Hazelton Group rocks.