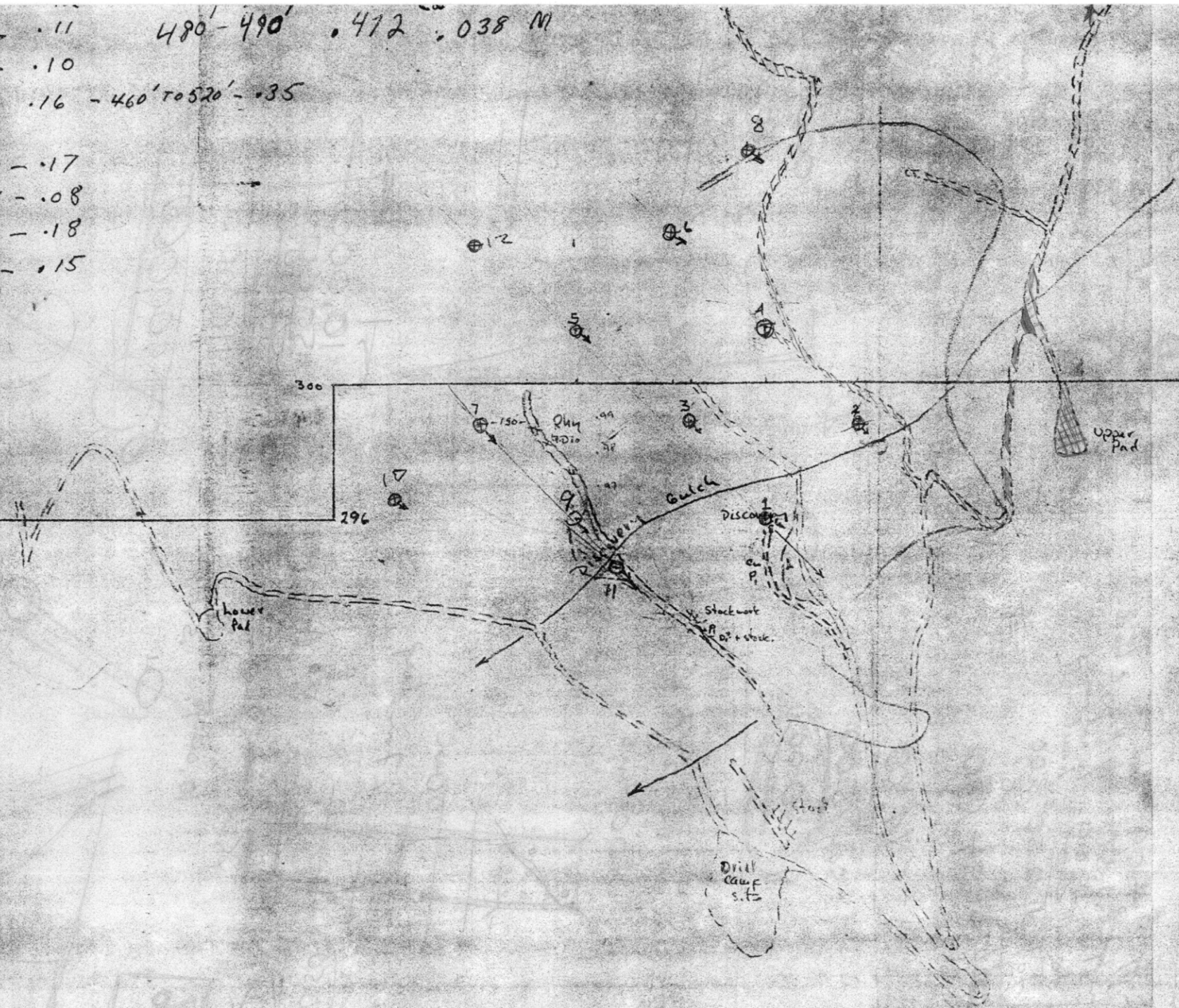


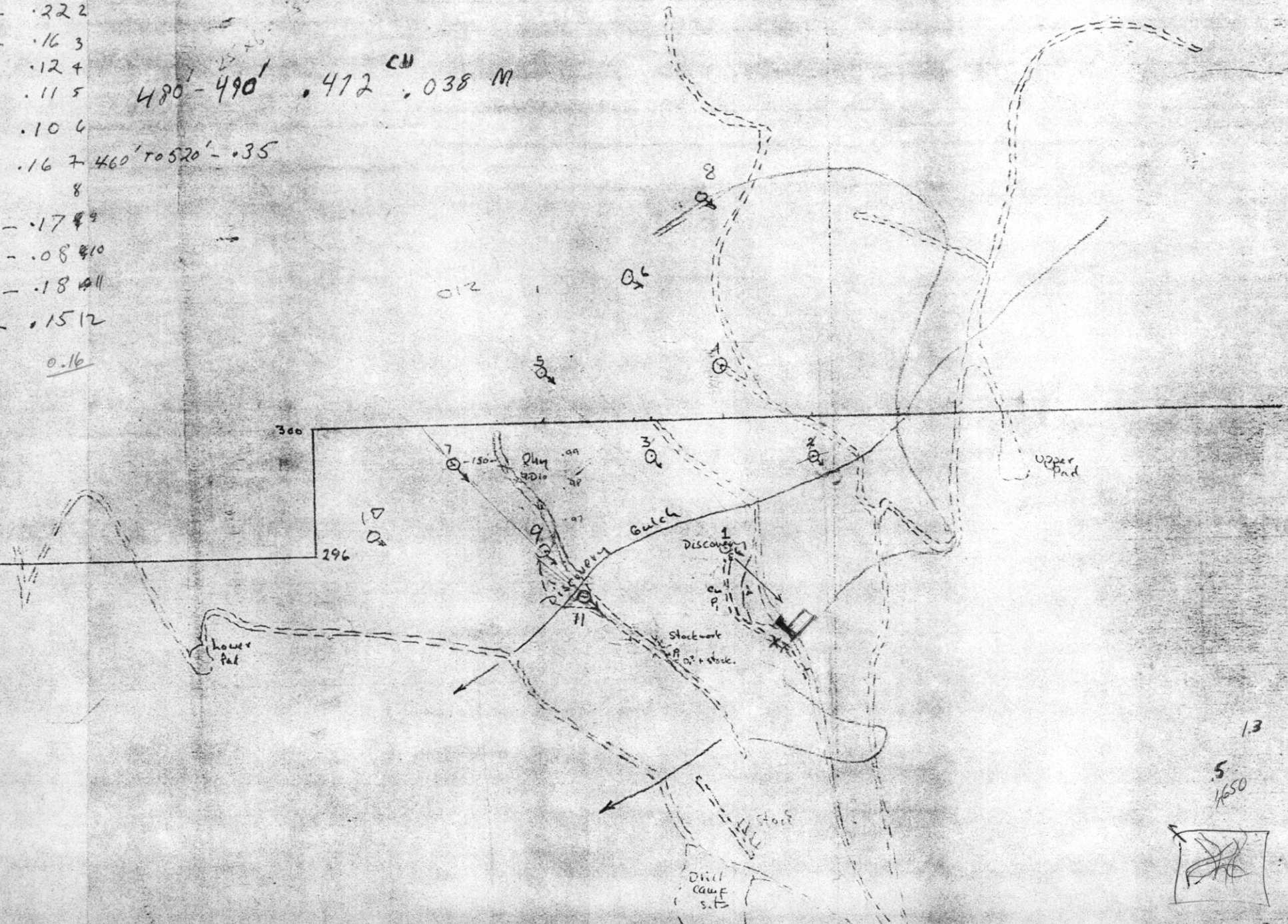
- 4 - 606
 5 - 600 - .11
 6 - 495 - .10
 7 - 562 - .16 - 460' to 520' - .35
 8 -
 9 - 500' - .17
 10 - 496' - .08
 11 - 500' - .18
 12 - 500' - .15
- 480' - 490' .472 .038 M




0 1 2 3 4

06 FT - .19 1
 00' - .22 2
 00' - .16 3
 06' - .12 4
 00' - .11 5
 495 - .10 6
 562 - .16 7
 500' - .17 8
 496' - .08 9
 500' - .18 10
 500' - .15 12
 5355 0.16

207
 29380 S
 480' - 490' .472 CU .038 M



13
 5
 1650


ce