

KEY	FLAG	FORMAT VERSION	SPEC	UNIQUE ID OF PROJECT OR SUB-PROJECT	DRILL HOLE / TRAVERSE PRE-FIX TYPE NUMBER	SIZE OF CORE OR HOLE	GEOLOGGED MONTH	BY	ASST'D BY	DRILLED DRILLER(S)	MONTH	YR	RIG TYPE	DRILLING TIME-HRS	SURVEYED BY	CO-ORD SYSTEM	GRID AZIMUTH	PAGE	OF																				
I	D	E	N	6	B	0	2	0	1	WINDY	DPH-08	NQ		MAP		0	4	Y	AUG	89			00	00			0	1	1										
I P R J										PLACER DOME INC.																													
TURN'G PT. 000=Collar										FROM TO MT or										TOTAL DEPTH/LENGTH A ZM CLOCK'W FR TRUE N V-ANG. NEG. IF DOWN										NORTHING NEG. IF SOUTH EASTING NEG. IF WEST ELEVATION NEG. IF SUB-SEA									
S O O O										0000 12950 MT										129.50 090.00-45.00										13000. 10400. 1059.									
I N A M										R Q D AGE FORM N ENVIR LC TM 3 COLOUR QM 2 TX 3 TX 4 S R N S N O C FRACTURES SIMIL 100' R B 2 STRU 2 ID A Z M DIPTORT										TO DEFINE HOW AND AMOUNT FIELDS OF ALTERATION AND MINERAL SUITES OPEN FIELD																			
/ N A M																				CLCBSIKFPI P2 P3																			
L N A M																				EPSESP CPL1 MA																			
																				FILL IN COLUMN HEADINGS USED if desired																			
																				1 2 3 4 5 6 7 8 9 10 11 12 13 14 15 16 17 18 19 20 21 22 23 24 25 26 27 28 29 30 31 32 33 34 35 36 37 38 39 40 41 42 43 44 45 46 47 48 49 50 51 52 53 54 55 56 57 58 59 60 61 62 63 64 65 66 67 68 69 70 71 72 73 74 75 76 77 78 79 80																			
UNIT OF										UNIT OF																													
/ S C L L										T . 2																													

2

860018

WINDY V-216

DDH-08

KEY	FLAG	FORMAT VERSION	SPEC	UNIQUE ID OF PROJECT OR SUB-PROJECT	DRILL HOLE / TRAVERSE PRE-FIX TYPE	SIZE OF CORE OR HOLE	GEOLOGGED MONTH	ASST'D BY	DRILLED DRILLER(S)	MONTH	YR.	RTG TYPE	DRILLING TIME-HRS.	SURVEYED BY	CO-ORD SYSTEM	GRID AZIMUTH	PAGE OF																																																														
I	D	E	N	6	B	0	2	0	1	WINDY	DPH-08	NQ		MAP		024	AUG	89			00	00			0	1	1																																																				
COMPANY NAME: PLACER DOME INC.																																																																															
PROPERTY or PROJECT or SUB-PROJECT NAME:																																																																															
TURN'G PT. 000=Collar	FROM	TO	MT or	TOTAL DEPTH/LENGTH	AZM	CLOCKW'S FR. TRUE N.	V-ANG.	NEG. IF DOWN	NORTHING	NEG. IF SOUTH	EASTING	NEG. IF WEST	ELEVATION	NEG. IF SUB-SEA																																																																	
S	0	0	0	0000	12950	MT	129.50	090.00	-45.00	13000	10400	1059																																																																			
See Note 4 TO DEFINE HOW AND AMOUNT FIELDS OF FILL out																																																																															
RECOVERY	T-MOD	% MIX	ROCK	TM 1	TM 2	QM 1	TX 1	TX 2	F	GRAIN Cc	% MXP	R	B1	STRUC ID	STRIKE AZM	DIP TO RT OR PLUNGE	ALTERATION AND MINERAL SUITES	OPEN FIELD																																																													
/	N	A	M														CLCBSIKFPI P2 P3																																																														
RQD	AGE FORM'N	ENVR	LC COLOUR	TM 3	QM 2	TX 3	TX 4	S	R	N	S	N	O	C	FRACTURES S	TM 1 L	TOP	R	B2	STRUC ID	AZM	DIP TORT	OPEN FIELD																																																								
L	N	A	M														EPSESP	CPL	MA																																																												
FILL IN COLUMN HEADINGS USED if desired																																																																															
1	2	3	4	5	6	7	8	9	10	11	12	13	14	15	16	17	18	19	20	21	22	23	24	25	26	27	28	29	30	31	32	33	34	35	36	37	38	39	40	41	42	43	44	45	46	47	48	49	50	51	52	53	54	55	56	57	58	59	60	61	62	63	64	65	66	67	68	69	70	71	72	73	74	75	76	77	78	79	80
UNIT OF UNIT OF T . 2 .																																																																															
LENGTH RECOVERY UNIT OF LCTM or LB Hv																																																																															
RQD																																																																															
FILL OUT IF REQUIRED CROSS OUT IF NOT REQUIRED																																																																															
TURN'G PT. 000=Collar	FROM	TO	TOTAL DEPTH/LENGTH	AZM	CLOCKWISE FR. TRUE N.	V-ANG.	NEG. IF DOWN																																																																								
S	0	0	1																																																																												
S	0	0	2																																																																												
S	0	0	3																																																																												
S	0	0	4																																																																												
S	0	0	5																																																																												
S	0	0	6																																																																												
1	2	3	4	5	6	7	8	9	10	11	12	13	14	15	16	17	18	19	20	21	22	23	24	25	26	27	28	29	30	31	32	33	34	35	36	37	38	39	40	41	42	43	44	45	46	47	48	49	50	51	52	53	54	55	56	57	58	59	60	61	62	63	64	65	66	67	68	69	70	71	72	73	74	75	76	77	78	79	80
Assay File No. (Typically 1.)																																																																															
ASSAY FIELD NAMES SEE NOTE 2:																																																																															
A	L	A	B																																																																												
A	T	Y	P																																																																												
A	M	T	H																																																																												
ASSAY FILE DESCRIPTION CARDS ARE OPTIONAL CROSS OUT IF NOT REQUIRED OR REPLACED BY REMARKS																																																																															
SAMPLE ASSAY RECORDS																																																																															
FROM	TO	RECOVERY	SS=Sample Serial No.	A 1	A 2	A 3	A 4	A 5	A 6	A 7	A 8	A 9																																																																			
A	0	0																																																																													
A	0	0																																																																													
A	0	0																																																																													
A	0	0																																																																													
Assay File Definition Number, Typically A001.																																																																															

Notes:

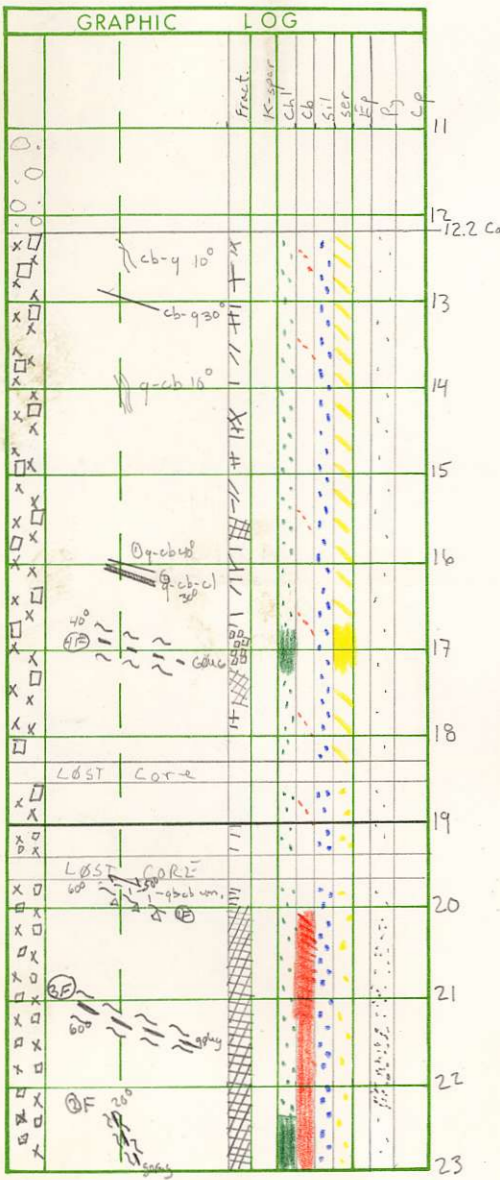
- Do not change /NAM, LNAM, /SCL, LSCL, or AUMM card definitions durin a project. Blanks may be changed hower.
- On AUMM card, right adjust names so that R.H. 4 letters make sense. They will be "stats" header names.
- Units of distance on 5000 card are for survey coordinates, those on /SCL card are for downhole distances.
- To define XX type field put XX in upper tier, lower tier then becomes corresponding How and amount field.
- If additional "S" or "A" cards are required use another header form and cross out unwanted portions or enter "S" or "A" cards on keypunched portion on Form 2.



UNIQUE ID OF PROJECT I D E N 6 B 0 2 0 1				DRILL HOLE / TRAVERSE V 2 1 6 P P H - 8			SIZE OF CORE		LOGGED		BY M A P		ASST. D		DRILLER (S)		MONTH		YEAR		TYPE		TIME-HRS		SURVEYED		SYSTEM		GRID		AZIMUTH		PAGE 2 / 1		OF	
DRILL COORD SYSTEM UNITS M / F T				TOTAL DEPTH/LENGTH AZM						V ANG						NORTHING						EASTING						ELEVATION								

ROCK TYPE  
VEINS  
FRACTURES  
ALTERATION  
MINERALIZATION  
METERAGE

FROM		TO		RECOV.	T-MOD	% MIX	ROCK	OZ VEINS S I M L Tot		FILL IN COLUMN HEADINGS FOR HA/XX TYPE HEADINGS																																					
1	4	5	6	7	8	9	10	11	12	13	14	15	16	18	19	20	21	22	23	24	25	26	27	43	44	45	46	57	58	59	60	61	62	63	64	65	66	67	68	69	70	71	72	73	74	75	76
				RQD				CS		FRACTURES S I M L Tot		C L C R S Z K F P I P 2 P 3																																			
				L						E P S E S P		L P L I M A																																			

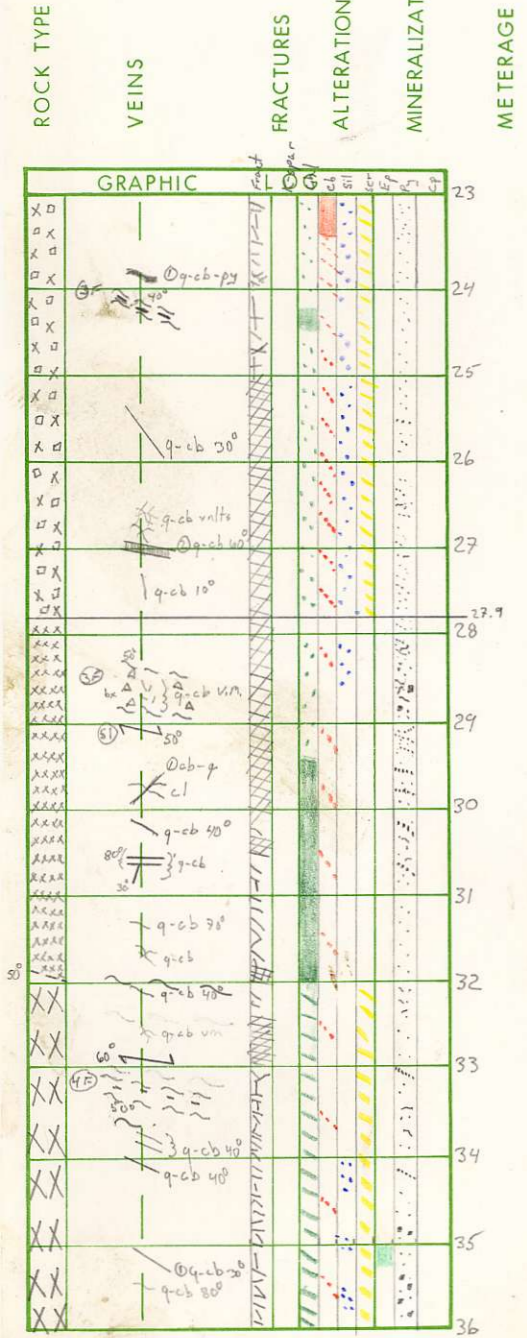


DESCRIPTIVE	REMARKS
12.2-19.0	AUGITE PORPHYRY DIORITE w/ MEGACRYSTS: lt grey (bleached), H=6, massive, porph. text. 20% mafic phenos (H&A) 0.5-7mm anh/subh. 80% gm equigran ellip, t.g. gm comp 60% plag, 10% mafics, 5-10% qtz, + traces dis py. Alt'n: chl-perv but weak repl of mafics. Ch-traces as fract fill ser. perv & weak repl of plag. Sil+ weak & perv.
16.9-17.1	Fault gouge, no change in mineralization, pasty & 100% gouge, lt. grey.
19.0-27.9	AUGITE PORPHYRY DIORITE: medium green, massive, H=6, porph. text, foliated & faulted where ind. in the core. Possibly and. flow because of dk gm color. contact w/ megacrystic unit is gradational, is marked by the increase in mafic phenos but decrease in size, large phenos make up 5% of rx until ~21.0m then there are only traces. 30% subh-anh px or hb phenos 0.5-5mm (most ~2mm) 70% t.g. gm, w/ 50% plag (anh), 15-20% mafics (chl), traces of anh qtz (anh) + traces py. Alt'n: chl-perv & weak repl of mafics, 4% cb units, perv & weak to med ser repl of plag. Perv & weak silicification.
20.55-24.0	The unfaulted rx, which is lim stained (carb alt) contains 1% py dis in gm stringers

A	1	4	5	6	7	8	9	10	11	12	13	14	15	16	18	19	20	21	22	23	24	25	26	27	43	44	45	46	57	58	59	60	61	62	63	64	65	66	67	68	69	70	71	72	73	74	75	76						
P				0	0	0	0			1	2	2	0																																									
L																																																						
N																																																						
A1																																																						
P																																																						
L																																																						
D																																																						
N																																																						
L																																																						
A1																																																						
D																																																						
L																																																						
N																																																						
L																																																						
A1																																																						

(Geolog Form 3)

UNIQUE ID OF PROJECT				DRILL HOLE / TRAVERSE				SIZE OF CORE				LOGGED				BY				ASST D				DRILLER (S)				MONTH				YEAR				TYPE				TIME-HRS				SURVEYED				SYSTEM				GRID				AZIMUTH				PAGE				OF			
I D E N 6 B 0 2 0 1				V 2 1 6				D P H - 8								M A P																																3 / 1																			
DRILL COORD				SYSTEM UNITS				M / F				TOTAL DEPTH/LENGTH				AZM				V ANG				NORTHING				EASTING				ELEVATION																																			
S																																																																			



FROM		TO		RECOV.	T-MOD	% MIX	ROCK		QZ VEINS S M L tot		FILL IN COLUMN HEADINGS FOR HA/XX TYPE HEADINGS																																										
1	4	5	6	7	8	9	10	11	12	13	14	15	16	18	19	20	21	22	23	24	25	26	27	43	44	45	46	57	58	59	60	61	62	63	64	65	66	67	68	69	70	71	72	73	74	75	76						
L																																																					
RQD		CS		FRACTURES S M L tot		CL C B S F X F P1 P2 P3																																															
RECOV		SS-Sample		Serial No		27 28 29 30 31 32																																															
A																																																					
N				2	4	0	0			2	4	2	5			9	0									0	2			P	3	<	1							D	.			<	+								
L																0	0	R	1																																		
D				2	4	2	5			2	5	5	0			8	4									0	2			P	1	<	)					D	)			<	)										
L																2	4																																				
A	1			2	4	0	0			2	5	5	0					A	5	8	8	0																															
D				2	5	5	0			2	7	9	0			8	3																																				
L																2	9																																				
A	1			2	5	5	0			2	7	9	0					A	5	8	8	1																															
P				2	7	9	0			3	2	0	0															P	1	<	)			P	1			D	)			U	.	<	)								
L																																																					
M				2	8	4	0			2	9	5	0			5	5			F	A	L	T							P	2																						
L																0	0									X	X	X																									
D				2	7	9	0			2	8	4	0			9	0											0	1																								
L																4	0											2	3																								
A	1			2	7	9	0			2	9	5	0					A	5	8	8	2																															
N				2	9	5	0			3	2	0	0			9	2																																				
L																3	6									X	X	X																									
A	1			2	9	5	0			3	2	0	0					A	5	8	8	3																															
P				3	2	0	0			3	9	0	0							C	G	D	R							P	3	<	)			Q	1			D	.			U	.	<	.						
L																																																					
D				3	2	0	0			3	3	4	0			7	1											0	1																								
L																1	4									X	X	X																									
A	1			3	2	0	0			3	3	6	0					A	5	8	8	4																															
N				3	3	4	0			3	3	6	0			9	9											F	A	L	T			0	2																		
L																0	0																																				
D				3	3	6	0			3	8	0	0			9	1																																				
L																2	5											5	6																								
A	1			3	5	0	0			3	6	0	0					A	5	8	8	5																															

















