

860006

R. Komarilla -

4031

286-8751

TR. MK. REG. U.S. PAT. OFF.

Sample No 2

On Ophan Bay M.C.
near Ark Energy claim
near road onOn road to Ophan Bay shaft
and pit

Elev. 5670

Groundhog:

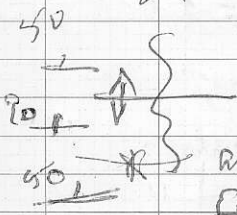
- Creek above Orphan Bog:
- interbedded quartzite & siliceous schist
- outcrop with quartz streaks:

6150'

Note folded & faulted:

Sample 73-33

N. side of creek rocks
 + Qtz segregations
 strike 110° 190°
 and 110° 50° E



Isoclinal foliation
 creek bed
 anticline

assembly and low
 fracture system
 runs: 10° 80° E
 + Qtz veins - discordant

1cm → 10cm

- large pyrite cubes in
 vein material
 schist near
 veins

note generally N. side

Note blue pits cross
wings close to
near fracture

Above Orphan Boy:

GOOD! - 10cm glz vein shaft
N 30° E cuts
circular graphic schist
Sample (2) F3534

- Sample = 1m wide chip
on E side of vein

[no outcrop on West side]

- glz vein = dissected -
schist = strikes 110° - 60°
but variable,

Note fracture // 110° 80° E

chip of vein (3) F3535

- vuggy + pink,
? schist?

SF rich
locally

2nd station 10 cm wide
 discordant strike $30^{\circ} 90^{\circ}$
 beds graphitic schist $95^{\circ} 30^{\circ} S$
 - no sign of
 sulphide
 - bedrock 50m distance
 of the bay
 5920' elevation

about 100 E of creek
 of the bay
 shaft area note v. fine grained
 veins (budd - no SF)
 sharp outcrops:
 with flatly inclined
 v. fine grained
 p/w. with
 later fracture 20°

shaft area - 1999
 1m wide + fault
 $70^{\circ} 90^{\circ}$
 discordant to flat
 schist - graphitic
 local fault

1025 1020 below
5780' Orphan Bay shaft
= flat lying list -
well bedded &

interbedded with graphitic
schist. - low

$115^{\circ} - 40^{\circ} N$

- outcrop of quartz in
schist \rightarrow limestone

73536 sample (A)

with V. beds with fossils
= no skarn

[Chlorite schist]

white fine sand quartz in
list

hard creek; low-dip
below 1020' - 100m

gibbs way $30^{\circ} 90^{\circ}$

sharp contact with
graphitic schist
strike $110^{\circ} 30' N$

adit changed - 9/7 vein
 from dump =

rich in quartz - pyrite

pyrite
 V. similar to material
 in Alpha box.

chip sample dump

Sample (5) #34537

- mainly pyrite
- note extraglates into
 Mag High

#34538

(6) - above adit - (5)
 = foot block of
 V. siliceous rock
 + dissection
 & pyrite spots / pits.

Old to Bull shaft

- 2 quartz veins,

60cm, 10cm

strike 20° 85° W

cuts nose of bed

in calc - graphite

art. slate

90° strike 50° S

↪ 90° strike 20° N

- antiform

Went = perpendicular

to plunge

Note sharp contacts:

> 40cm wide zone
between quartz veins

= similar graphite

shaft - with calcite and

quartz - limonite

⑦ Chip sample of quartz vein F3539
Ole H₂O Bull

⑧ " " galena/calc shale F3540
interbedded

Sequence about 10

⑨ Same 9m E of vein - Fresh system schist F3541

⑩ - (qtz) rich carbonate system

F3542 Feb. 80 60°N

Weakly

- goss. in carbonate layers - shale
calc sequence

~~F3543~~

⑪ slope flat if MSV
pyrite - pyroclastic

~~⑫ Chip sa~~

Base of Sandstone cliff

Note: - shales fractured but
not V. much of the veins
to south pass up & into

Sst unit: - locally V.
fractured → of the veins

bedding 120° 80° S

of the veins / 30° 90°

10-50 on side

* 10m intervals

the same of the veins
contain sulphide (Fe, Pb)

(12)

Chip sample

siltstone siltst

sandstone

and veins

- note variable
attraction, locally
pyritic, gossans,

locally + manganese,
serpentine,
chlorite

73544

See [unclear] [unclear]

Flav. 5.80

Masson

Goplus

(13)

Chip sample of
vein material
73545

(14)

73546

green mica
~~#~~ fuchsite
in altered sediment
float on cliff
below
Graham Creek Pass

(15)

73547

chlorite selvage
adjacent to
qtz vein
as above

73548

(16)

Behan Bay
qtz vein channel

(17)

73549

Ophiolite
schist adjacent to
vein, channel

1	73532
2	534
3	535
4	536
5	537
6	538
7	539
8	540
9	541
10	542
11	543
12	544
13	545
14	546
15	547
16	548
17	549
18	73550