

26-1 COYLE

- 8-239 Coyle + Nicola
- 8-253 Coyle Diorite cut by Kingsvale dyke (contact)
- 8-254 Coyle Dio + QDio cut by swarm of ftd
- Gd → Granite
- 253A Coyle B Kingsvale C Coyle D Coyle
- 8-255 Coyle Hybrid (nearby metamicola)
- 10-139 18c
- 16-143 Coyle granite (?) or diorite? (18p)
- 10-144 Sheared Coyle (?) (18c)
- 10-149 Coyle + Nicola (18c) [p-periplerid / c-core]
- 149B White Rhy.
- 10-150 18c + Nicola
- 10-151 18p, 18c + young Dyke cuts 18p? (pppy)
- 16-108 Dio
- 16-109 alt. granite
- 109A Bxt'd " - Tour veined
- 16-110 Granite + Nicola
- 16-111 Dio w Nicola xenos
- stumps of Coyle in Nicola
- 16-113 Granite

26-1 Coyle

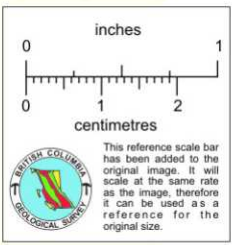
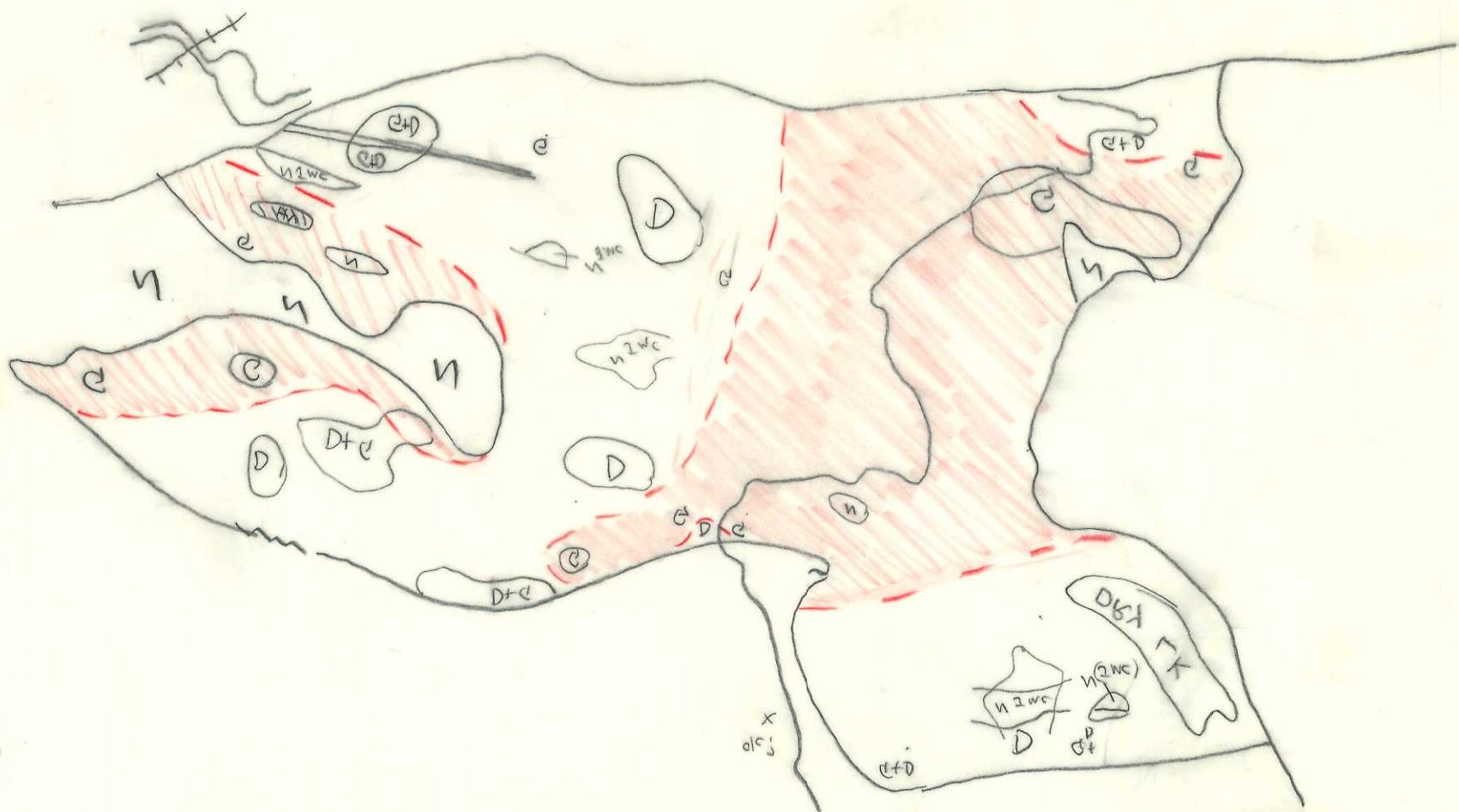
- 16-114 Sillst Dykes of Dior. in Nicola
- 16-115 Qtz Dior.
- Qtz-ep veins
- 16-116 Dio ↑, Nicola bas. Xenos
- 16-118 Dio, minor granite
- 16-117 Dio macrod
- 16-119 Granite
- 16-147 Dio w granite veinlets

26-2 Coyle

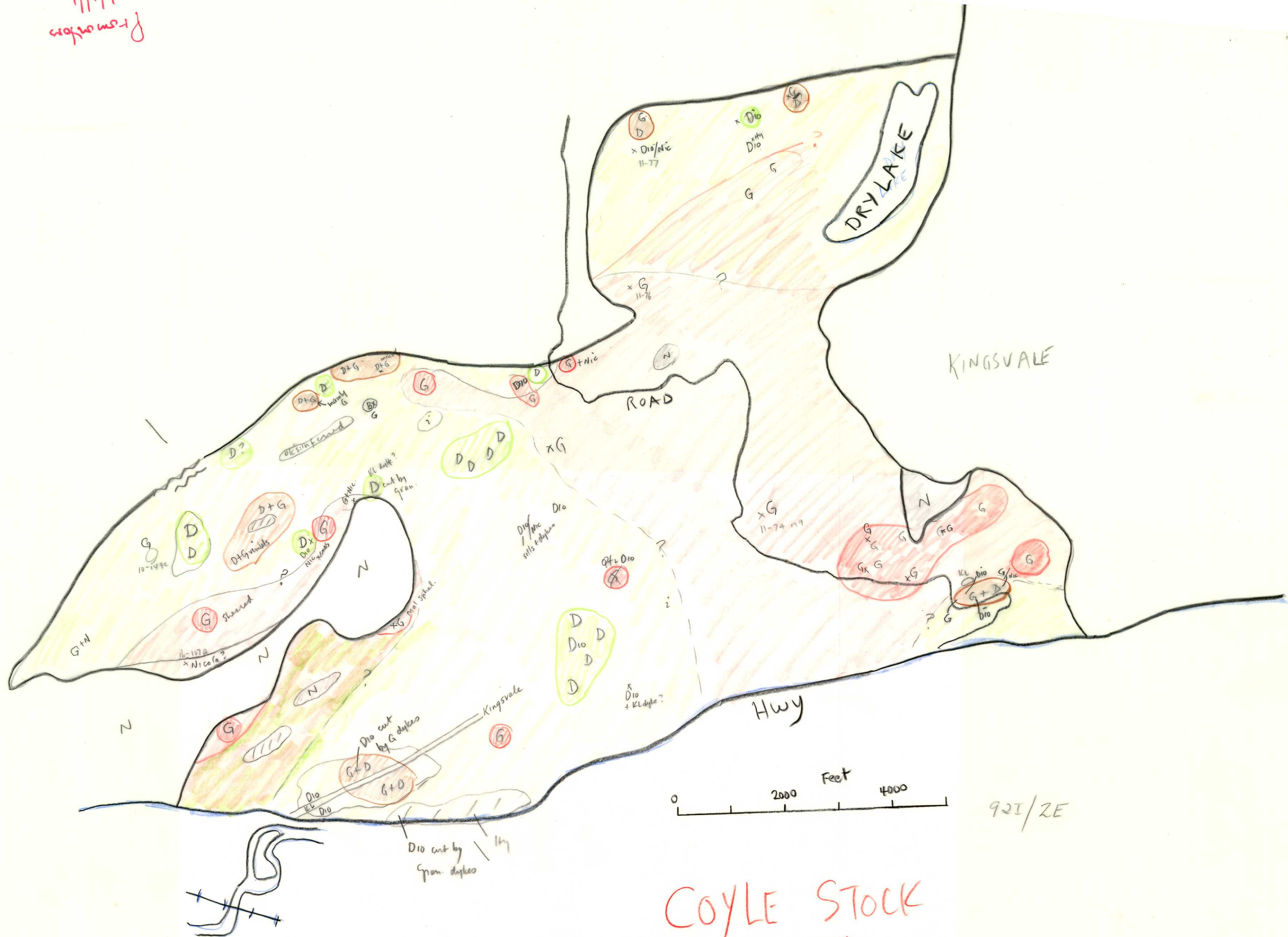
- 8-240 Granite
- 8-241 ?
- 8-241A Gd → Granite [spatsum-like]
- 8-242A Diorite
- 8-242B granite
- 8-242C Diorite
- 8-243 Granite against Nic. Metabas. (sharp) ep veins
- 10-137 18c
- 10-152 18c granite dykes? cut diorite CR.
- 11-76 Granite
- 11-79 11-77? Dio
- 11-80 Granite / 80A Diorite + epid. / 80B Amphib? hybrid?

26-2 Coyle

- 11-81 Netwk of qtz-ep veins Amphib + Diorite
- 11-82 granite - contact zone? inclusions of amphibolite
- 11-85 Granite (major xenos)
- 16-117 Diorite ep + qtz veins cut by Kingsvale? dyke



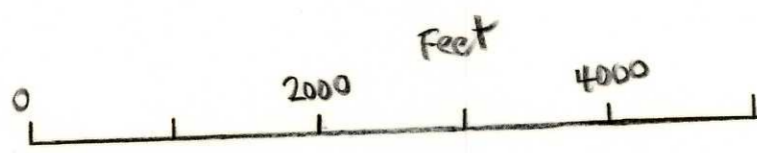
From notes 11/11



COYLE STOCK
15/3/78

KINGSVALE

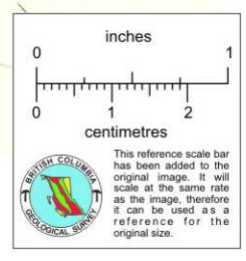
DRY LAKE



92E/ZE

1:16,000

8431.07



Cox's Creek
Carter

