

842713

GEOCHEMISTRY DATA

MAP: 104 K

NAME: *ROB LAZENBY*

DATE: *JULY 5*

PROJECT: *M504*

PHOTO NO. *BC5615 175*

TRAVERSE NO: *16*

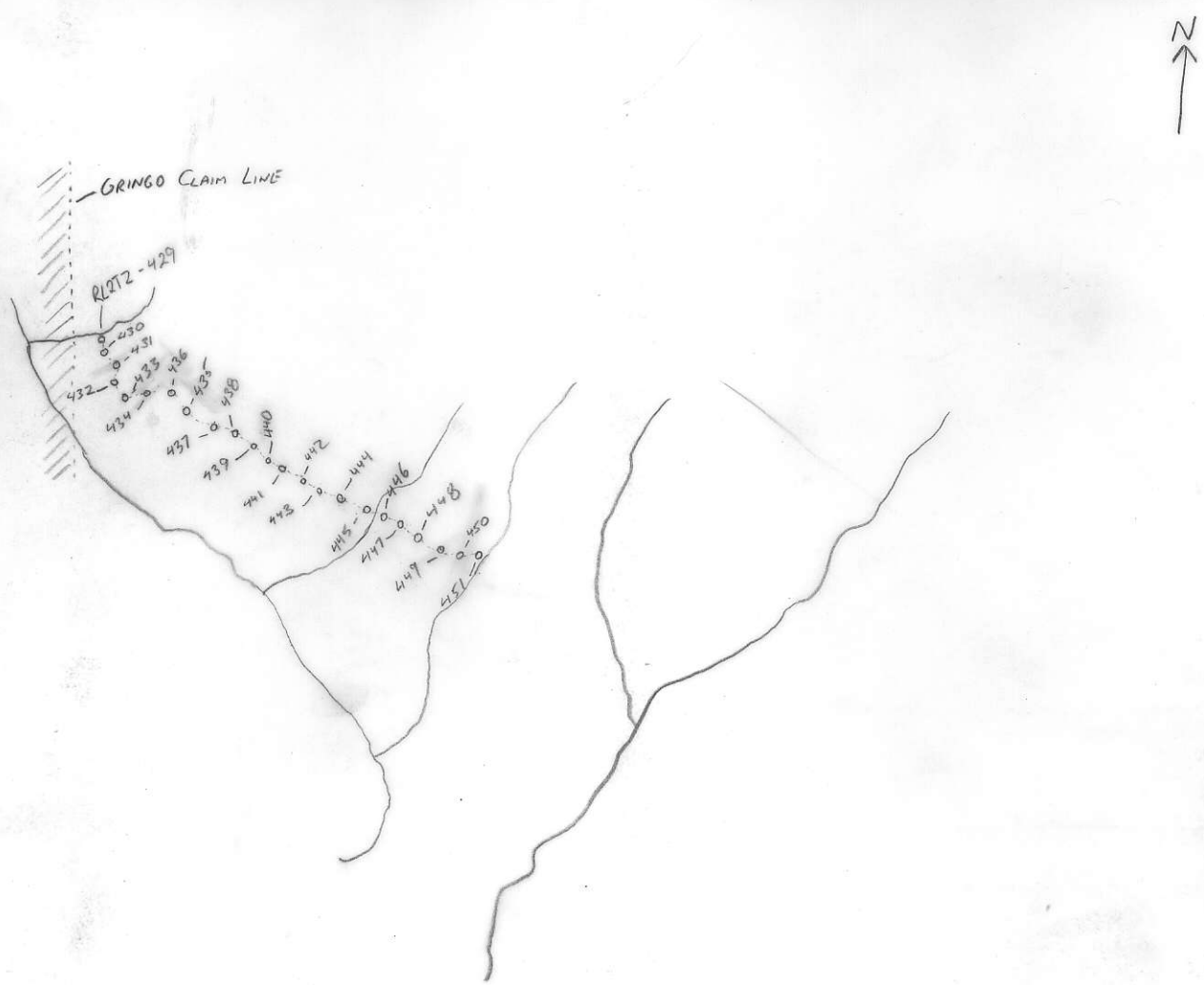
AREA: *NEAR GRINGO*

SAMPLE NO.	GRID LOCATION	C R	T X	S L P	H R N	O R G	P H Y	COMMENTS	ANALYTICAL RESULTS					
<i>RL272-429</i>		<i>1</i>	<i>3</i>	<i>-</i>	<i>2</i>	<i>1</i>	<i>4</i>	<i>SOME ROOTS.</i>						
<i>-430</i>		<i>1</i>	<i>2</i>	<i>-</i>	<i>2</i>	<i>-</i>	<i>4</i>							
<i>-431</i>		<i>1</i>	<i>2</i>	<i>-</i>	<i>2</i>	<i>1</i>	<i>4</i>	<i>SOME ROOTS</i>						
<i>-432</i>		<i>1</i>	<i>2</i>	<i>-</i>	<i>2</i>	<i>-</i>	<i>4</i>							
<i>-433</i>		<i>1</i>	<i>2</i>	<i>-</i>	<i>2</i>	<i>-</i>	<i>4</i>							
<i>-434</i>		<i>1</i>	<i>2</i>	<i>-</i>	<i>2</i>	<i>1</i>	<i>4</i>	<i>SOME ROOTS.</i>						
<i>-436</i>		<i>1</i>	<i>3</i>	<i>-</i>	<i>3</i>	<i>-</i>	<i>4</i>	<i>B-C</i>						
<i>-435</i>		<i>1</i>	<i>3</i>	<i>-</i>	<i>2</i>	<i>1</i>	<i>4</i>	<i>SOME ROOTS</i>						
<i>-437</i>		<i>1</i>	<i>3</i>	<i>-</i>	<i>3</i>	<i>-</i>	<i>4</i>	<i>SOME ROOTS.</i>						
<i>-438</i>		<i>1</i>	<i>2</i>	<i>-</i>	<i>3</i>	<i>1</i>	<i>4</i>	<i>B-C, SOME ROOTS & ROCKS.</i>						
<i>-439</i>		<i>1</i>	<i>4</i>	<i>-</i>	<i>3</i>	<i>-</i>	<i>4</i>	<i>B-C, ROCKY</i>						
<i>-440</i>		<i>1</i>	<i>3</i>	<i>-</i>	<i>3</i>	<i>-</i>	<i>4</i>	<i>ROCKY</i>						
<i>-441</i>		<i>1</i>	<i>3</i>	<i>-</i>	<i>3</i>	<i>-</i>	<i>4</i>	<i>B-C - ROCKY</i>						
<i>-442</i>		<i>1</i>	<i>3</i>	<i>-</i>	<i>3</i>	<i>-</i>	<i>3</i>	<i>OLD SLIDE MATERIAL - OVERGROWN</i>						
<i>-443</i>		<i>1</i>	<i>2</i>	<i>-</i>	<i>2</i>	<i>1</i>	<i>4</i>	<i>SOME ROOTS</i>						
<i>-444</i>		<i>1</i>	<i>2</i>	<i>-</i>	<i>2</i>	<i>-</i>	<i>4</i>							
<i>-445</i>		<i>1</i>	<i>3</i>	<i>-</i>	<i>3</i>	<i>-</i>	<i>4</i>	<i>B-C.</i>						
<i>-446</i>		<i>1</i>	<i>2</i>	<i>-</i>	<i>2</i>	<i>1</i>	<i>4</i>	<i>SOME ROOTS</i>						
<i>-447</i>		<i>1</i>	<i>2</i>	<i>-</i>	<i>3</i>	<i>-</i>	<i>4</i>	<i>B-C</i>						
<i>-448</i>		<i>1</i>	<i>2</i>	<i>-</i>	<i>2</i>	<i>1</i>	<i>4</i>	<i>SOME ROOTS</i>						
<i>-449</i>		<i>1</i>	<i>2</i>	<i>-</i>	<i>2</i>	<i>-</i>	<i>4</i>							
<i>-450</i>		<i>1</i>	<i>2</i>	<i>-</i>	<i>2</i>	<i>-</i>	<i>4</i>							
<i>-451</i>		<i>1</i>	<i>2</i>	<i>-</i>	<i>3</i>	<i>-</i>	<i>4</i>	<i>B-C</i>						

WSD - 02999 1108
 ATTITUDES
 (100/40 N)

Project <i>M504</i>	NTS <i>104K</i>	Scale <i>1:30,000</i>	Page <i>1</i> of <i>1</i>	Traverse <i>RL-16</i>
Sampler <i>ROB LARENBT</i>	Location, Target (words) <i>EAST OF GRINGO</i>		Sample Nos <i>RL272-429 to 451</i>	
Date <i>JULY 5</i>	photo no. <i>RC5615 175 (T-22)</i>		Cert. Nos	

GOSSAN, MINERALS
 INTRUSIVE
 LIMESTONE DOLOMITE
 SHALE
 CHERT
 VOLCANIC
 CONGLOMERATE
 SANDSTONE SILTSTONE
 SPECIMEN SITE A.B...; DO NOT WRITE ON OTHER SIDE OR USE COLOURS
 SILT X SOIL ● ROCK ■ PAN △ WATER O
 DON'T FORGET CONTOURS, DRAINAGE, NORTH ARROW, LAT/LONG, SAMPLE SITES, WORKINGS, TRAILS, GOSSANS, OBSERVED GEOLOGY: DEFINED — INFERRED --- ASSUMED.....



GEOCHEM: Cu Mo Pb Zn U W
 ASSAY:

RL-16
TRAVERSE - 16

JULY 5

SPENT THE DAY doing a regional line just east of the GRINCO claim. Jim and I were each dropped off at the edge of the claim, next to the creek in which we were to start. We did not start until late because 4 grizzlies were near Jim's starting location. Once we were satisfied that they were not interested in us we started our lines: 2200 m, 100 m spacings, following contours. Jim was 300 m below me at start.

23 soils.