

RL-13

842605

JUNE 15

BETWEEN WAY CLAIMS

MIKE THIRLE - PARTNER

RLT1-127 TO RLT1-139

WE WERE DROPPED OFF IN THE  
SAME SADDLE WHERE WE ENDED YESTERDAY,  
& CONTINUED ALONG THE RIDGE.

RLT1-127 SOIL

med  
brn

RLT1-128 SOIL

ort  
brn

WEATHER - CLEAR, COLD & WINDY. SNOW  
ON GROUND

RLT1-129 SOIL

red  
gray-brn

RLT1-130 SOIL

med  
red  
brn

RLT1-131 SOIL

med  
red  
brn

REACHED EDGE OF PHOTO, TURNED TO  
VALLEY, AND SIDEHILLED UP TO  
VALLEY END.

RLT1-132 SOIL

lt  
red  
brn

B-C

5cm mod

B-C

5cm mod

C

5cm mod

C

5cm mod

C

7cm mod

C

5cm steep

RLT1-133 SOIL

med  
grey  
brn

RLT1-134 SOIL

med  
brn

RLT1-135 SOIL

drk  
brn

RLT1-136 SOIL

med  
grey  
brn

RLT1-137 SOIL

med  
brn

WEATHER : LIGHT RAIN

RLT1-138 SOIL

med  
brn

RLT1-139 SOIL

med  
brn

C 5cm steep

C some root hairs 5cm steep

B some root hairs 10cm steep

C 5cm steep

C 5cm mod

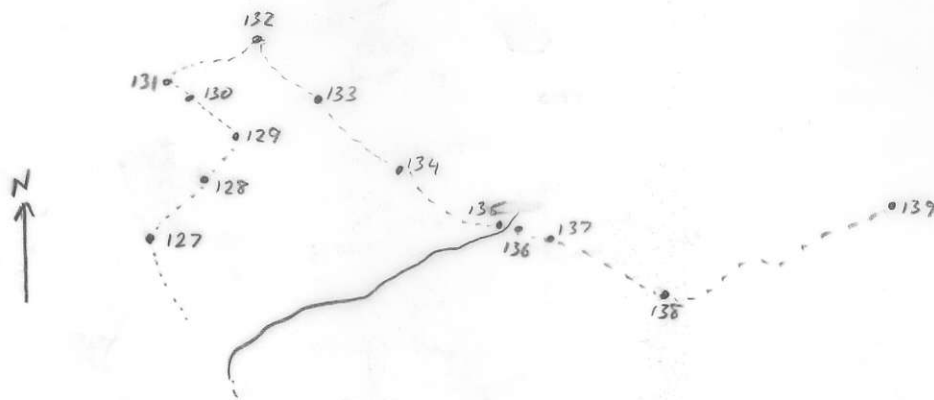
C 5cm steep

B-C 5cm mod

CIL 6662 - CS  
ATTITUDES  
100/40 N

Project <i>TULSEQUAN</i>	NTS <i>104 K</i>	Scale <i>1 = 1/2 mile</i>	Page <i>1</i> of <i>1</i>	Traverse <i>RL-13</i>
Sampler <i>ROD LARENBT M THICKE</i>	Location, Target (words) <i>NORTH 01= TRAPPER LK, BETWEEN WAY</i>		Sample Nos <i>RLT1-127 TO RLT1-139</i>	
Date <i>JUNE 15/81</i>	photo no. <i>BC 5614 #026</i>		Cert. Nos	

PRECEDE ALL SAMPLES WITH RLT1



MIKE AND I WERE LANDED AT OUR PICKUP SPOT AND CONTINUED ALONG THE SAME COURSE AS THE PREVIOUS DAY. THE WEATHER BEGAN AS A COOL & CLEAR DAY, BUT GRADUALLY CLOUDED OVER AND WE EXPERIENCED SOME RAIN & SNOW IN THE AFTERNOON. ONCE WE REACHED THE END OF THE RIDGE WE WERE FOLLOWING, WE WENT BACK UP THE VALLEY TOWARDS SOME GOOD LOOKING OUTCROP WE NOTICED THE DAY BEFORE. WE SPENT THE REST OF THE DAY EXAMINING GOSSAN OUTCROP IN THE AREA.

- GOSSAN, MINERALS
- INTRUSIVE
- LIMESTONE DOLOMITE
- SILT X SOIL
- SHALE
- CHERT
- VOLCANIC
- CONGLOMERATE
- SANDSTONE SILTSTONE

DON'T FORGET CONTOURS, DRAINAGE, NORTH ARROW, LAT/LONG, SAMPLE SITES, WORKINGS, TRAILS, GOSSANS, OBSERVED GEOLOGY: DEFINED ——— INFERRED - - - - ASSUMED.....

GEOCHEM: Cu Mo Pb Zn U W ASSAY: