

ROD

842410

JULY 27, 83 1
RIDGIE CLAIM
D. HODGE
RIDGE TOP TRAU
From WEST TO EAST
TRAU #27
SAMPLES DH372-831 TO

KNZTI 9 AT 8+50M
SMALL RUSTY SULFIDES
O.C. ON RIDGE TOP
DUESN'T FOLLOW DOWN
EITHER SIDE

1400 M ROD 2
2N
85059
JUNE 8, 83

DH372-852
2300 242--5
INTENSLY RUSTY - ON.
ALT LIMSTONE ZONE; M D 155
PY, SULFIDES, M SIL

04351 - 853

23+00

ACT LIMESTONE,
M-I DISS PY, M SIL,
INTENSE RUST

75

3M

July 27/83

Let start at east end ridge
by myself - start off in
breccia beside a dark
dyke, possibly red below
it about only five feet up.

next sp. is breccia again.
dyke going straight up hill.

273m Thuyolite dyke cuts thru
the breccia. Ahead
at the top of the valley they
are numerous other thuyolite
dykes cutting dark rock
probably the breccia again.
Sample G371-86 - was
from the thuyolite dyke
slightly pyrite, white
to dark gray.

375m - at head of valley.
very rusty thuyolite

in breccia (tbl) sample
phydit (87) - gray sulphides
stn 95/v.

500m - top of alfred breccia
beside main
dykes.

sample of breccia (88)
maroon calc. + sil.
rusty - imp. Mn
Fe

500 - diorite bleached,

low - black - fault - purple

(89) - 2000 m - sil. of fine
silts - gray - dk
gray - well bedded
S/S/30° S

90 - Vn - dk in part
zone, - in sub-lid.
S/V
Vn - 2 m wide
truncated up
down inside

2097 - (91) -
inclined silts
S/S/S 100/300

2259 - contact of D. white

+ seeds

up to den hill.

2392 - (92) - s. toiferous

Soil etc - pt on
cutting through of
all angles,

possible s. to. h.

- from alk gray but

no visible sulphide

difficult to say.

chicki cap.

minor nests.

(93) - D. rectly above

(~ 15 m) a highly

s. licified etc of s. toiferous?

alot of very small + large

quartz vein cutted through

sequence some sulphide

213000 but generally
rather a medium gray color
Bedding 48° / 80 NW.

Another 50m or so into a
brown again, course of fine
mudstone.

2570 on ridge just prior to clean line
94 - clean white phyllite
over a layer or 150m x 150m
possibly another large ledge
as seen yesterday.

2740 - from in to common
line, directly N of
LCP.

July 29/83

Small north trending ridge.
has all of S base - porphyritic
basalts, minor rhyolite, clin. feld
no attract.

(95) - well along ridge - gts
breccia on with white
dowsy gts. This is K. in
sample that is (K2-6)
right up - the ridge
strike $\sim 38^\circ$ - very rough -
post heat ground. grab sample

96 - S. dip. rhyolite - S of V.
open rugged gts, just
below diorite. - field on post
grab sample, near head
of creek

97 - on north side of glacier

a qtz peg. zone. in direction
2 in in three or four ft
of which 1" is solid
qtz breccia (sample).

98 - on north side of vein
- silica-fid + carbonated breccia
sharp contact with qtz vein.

99 - on south side of vein
alkali zone wider
and remains small
qtz veins -

qtz vein in 2 inch of alkali on
South side + 1/2 inch on north
side, strike $62^{\circ}/V$.

Hell-crofton spot checking grid

- a top of peck above t.c.p.
- diorite, with well bedded
seds just below.

100

- pyrite diorite in
contact with a dyke
etc.

101-

a ridge - seds.

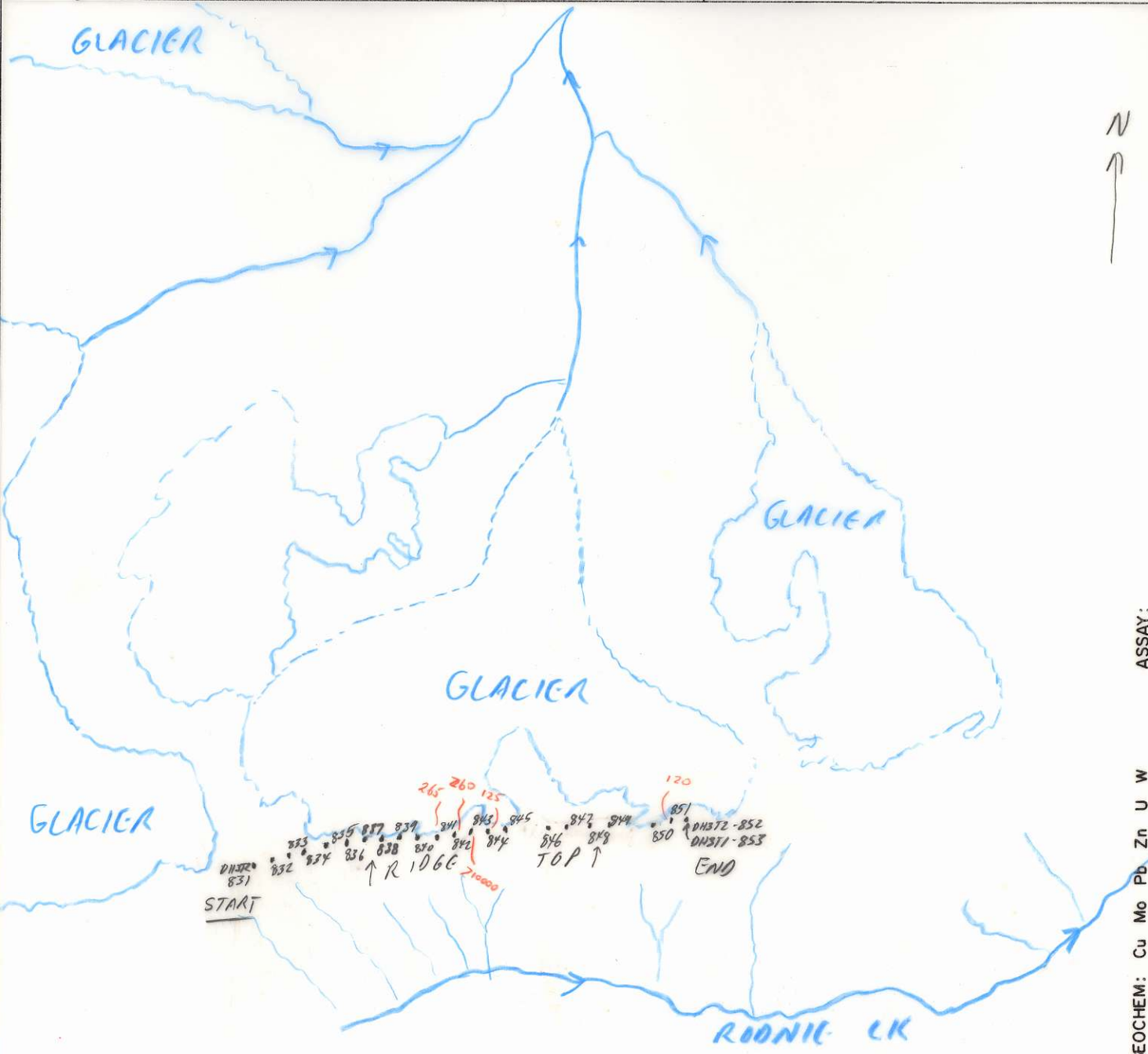
102

- in contact of lava
flow with a dyke
in contact.
- sample - grab of
pyrite - etc.

BCIL 66620-CSM
ATTITUDES
100/40 N

Project M504	NTS	Scale @ 1:30,000	Page 1 of 1	Traverse 27
Sampler D-HODGE	Location, Target (words) ROD CLAIM - RIDGE TOP TRAV		Sample Nos DH372-831 TO DH371-853	
Date JULY 27, 83	photo no. 335 HEADING W.		Cert. Nos	

- GOSSAN MINERALS
 - INTRUSIVE
 - LIMESTONE DOLOMITE
 - SILT X SOIL
 - SHALE
 - CHERT
 - WATER
 - ROCK
 - CONGLOMERATE
 - VOLCANIC
 - SANDSTONE SILTSTONE
- DO NOT WRITE ON OTHER SIDE OR USE COLOURS
- SPECIMEN SITE A.B. ...: DO NOT WRITE ON OTHER SIDE OR USE COLOURS
- DEFINED --- INFERRED --- ASSUMED



GEOCHEM: Cu Mo Pb Zn U W ASSAY:

GEOCHEMICAL SAMPLE DATA SHEET

1 of 1



NAME: D-14006 E		DATE: JULY 27, 83		MAP:				
PARTNER: —		PROJECT: M504		TRAVERSE NO.: 27				
LOCATION: R00 R106E - FROM WEST TO EAST		PHOTO NO.: 335						
SAMPLE NO.:	LOCATION	HRN	CLR	TEX	SLP	ORG	PHY	COMMENTS
04372-831	0100	2	1	2	-	-	5	ON VERY RUGGED RIDGE PEAK BETWEEN GLACIERS
" - 832	1400	2-3	1	1	-	-	5	BROWN CLAY ON RIDGE BASALTIC + ALKALIC O.C.
" - 833	2400	2	1	2	-	-	5	DIORITE O.C.
" - 834	3400	2	1	2	-	-	5	DIORITE O.C.
" - 835	4400	2	1	3	-	-	5	GREEN BASALTIC O.C.
" - 836	5400	2	1	2	-	-	5	LOOSE GREEN O.C. - ALKALIC?
" - 837	6400	2	1	2	-	-	5	" "
" - 838	7400	2	1	2	-	-	5	HORIZONTAL RAIN
" - 839	8400	2	1	2	-	-	5	" "
" - 840	9400	2	1-4	2	-	-	5	KNZTI 9' AT 8450
" - 841	10400	2	1	2	-	-	5	COCA + WET
" - 842	11400	2-3	1	2	-	-	5	" "
" - 843	12400	2	4	2	-	-	5	HEMATITE IN SOIL
" - 844	13400	2	4	2	-	-	5	RUSTY SOIL, SOME Q V FLOAT
" - 845	14400	2	4	3	-	-	5	BY RID 2 2N LOOSE GREEN ALKALIC
" - 846	16400	2	1	3	-	-	5	" " "
" - 847	17400	2	1	3	-	-	5	" " " SOAP MASSIVE ZONES
" - 848	18400	2	1	2	-	-	5	" " " LIMESTONE IN O.C.
" - 849	19400	2-3	1	3	-	-	5	LIMESTONE O.C. W SIL
" - 850	21400	2-3	1	2	-	-	5	" "
" - 851	22400	2	4	2	-	-	5	" "
" - 852	23400	2	4	2	-	-	5	INT RUSF, ON ALT LIMESTONE ZONE, MASS PY, M SIL
04371-853	23400							ALT LIMESTONE, M-I SIL, M-INTENSE RUS PY W/ CARB, INTENSE RUSF