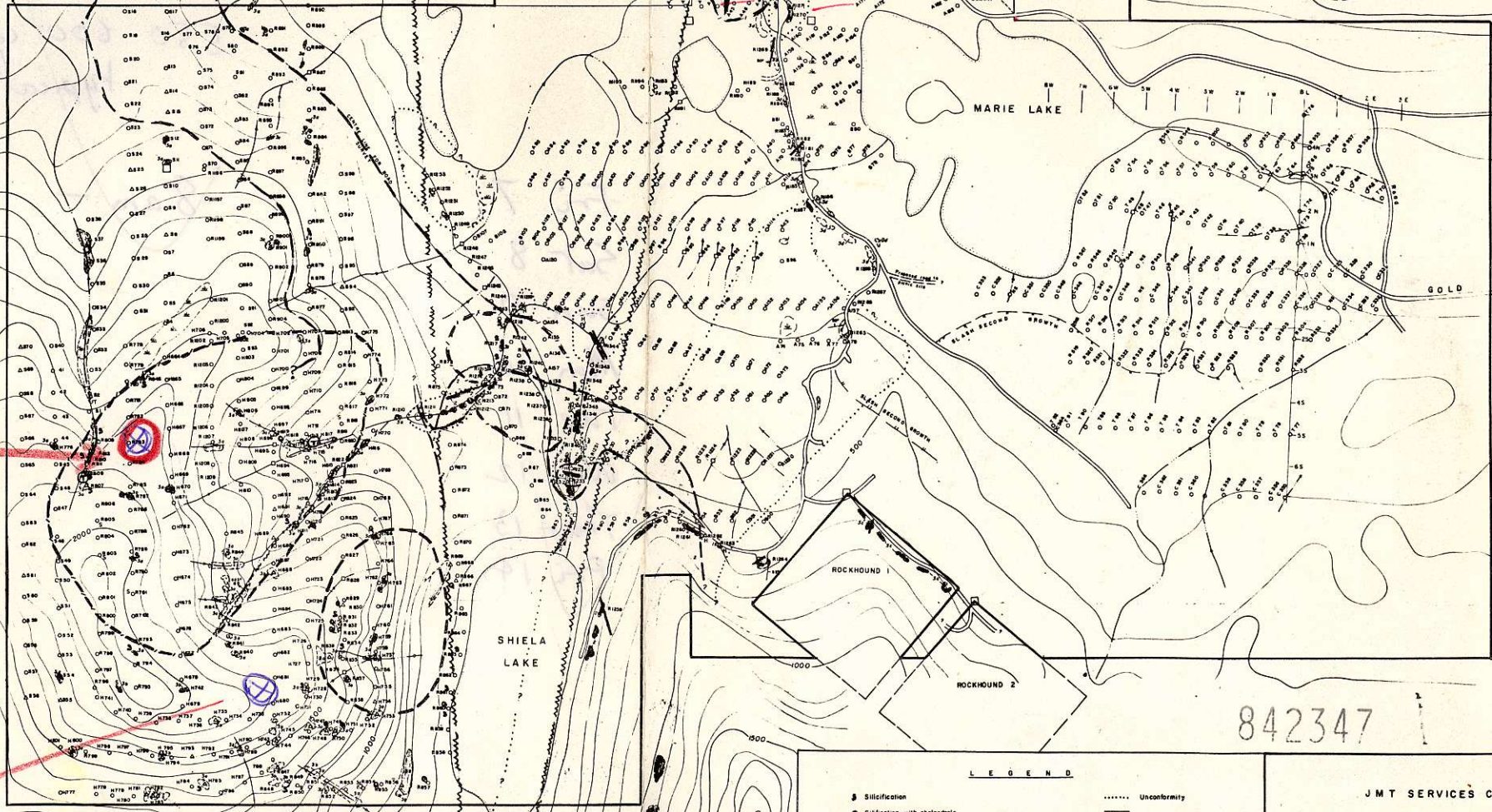


NORTH CLAIM BOUNDARY
650 m

PAM LAKE

not till
about
1986

CLAIMS
BOUNDARY



This heli
pad
cut
12 Aug 81

Possible
future
pad

842347

LEGEND

- § Silicification
- ⊙ Silicification with chalcocite
quartz veins
- ⊕ Tourmalinization
- ⊖ Quartz structure
- MASSET FORMATION Tertiary
felsic breccias some massive units,
mixed felsic and calcareous argillite breccia
pyrrhotite, garnet
andesite, dacite, basalt flows, breccia, tuff.
- Unconformity
- Dark Cretaceous ?
- Argillite, siltstone, sandstone
H horstfels.
- Many local zones pyrite-
silicification with chalcocite
veinlets.
- Intense silicification ± pyrite
with chalcocite veinlets.

JMT SERVICES CORP
MARIE AREA
GEOLOGY & ALTERATION
Many Years 1 - 4 Old Trail Prospector
and old Prospector mineral claims
SKEENA MINERAL DIVISION
QUEEN CHARLOTTE ISLANDS
NTS 103 F - SW & SW

FIG. 1



2.4 ac = 1 hect.

1500x1500 = 50/ac.

150x150 = .5 acres

100x150 \approx .4 acres

= $\frac{1}{6}$ th hectare.

550-600 cum/hectare
typical

8 am - 4 pm.

Fri 7

Sat 8

Sun 9

Mon 10

Tue 11

Wed 12

Thur 13

Fri 14.

845347

UNIT SERVICES UNIT

MARKS SHEET

GEOLOGY & MINING

UNIT SERVICES UNIT

UNIT SERVICES UNIT

UNIT SERVICES UNIT

UNIT SERVICES UNIT

UNIT SERVICES UNIT

UNIT SERVICES UNIT

UNIT SERVICES UNIT

UNIT SERVICES UNIT

UNIT SERVICES UNIT

UNIT SERVICES UNIT

UNIT SERVICES UNIT

UNIT SERVICES UNIT

UNIT SERVICES UNIT

UNIT SERVICES UNIT

UNIT SERVICES UNIT

UNIT SERVICES UNIT

UNIT SERVICES UNIT

UNIT SERVICES UNIT

UNIT SERVICES UNIT

UNIT SERVICES UNIT

UNIT SERVICES UNIT

UNIT SERVICES UNIT

UNIT SERVICES UNIT

UNIT SERVICES UNIT