

Memorandum

842184

Vancouver, B. C.
1985-05-30

Re: M504 - Surrender of the
TARDIS 2, 3, 4, claims

EARL D. DODSON

The purpose of this memo is to obtain permission to surrender the TARDIS 2, 3, 4 claims in Northern British Columbia. These claims were staked in 1981 as part of the TARDIS property. The key claims are still in good standing until 1986.

The work carried out to date on this property consists of prospecting, geological mapping, soil and rock sampling. Although most of the work has concentrated on the 'key claims' (TARDIS and PETRO), the fringe claims TARDIS 2, 3, and 4 have received some of this work.

The TARDIS property is centred on the King Salmon Thrust fault which has Triassic Sinwa limestone and Jurassic Inklin formation overriding the Jurassic Takwahoni formation. The potential for this property lies in the silicified, fluoritized Sinwa limestone. All of the geochemical anomalies and the alteration are associated with this limestone unit.

The ground covered by the TARDIS 2, 3, 4 claims is all in front of the thrust fault and, therefore, has no potential since it is underlain by unaltered Takwahoni formation.

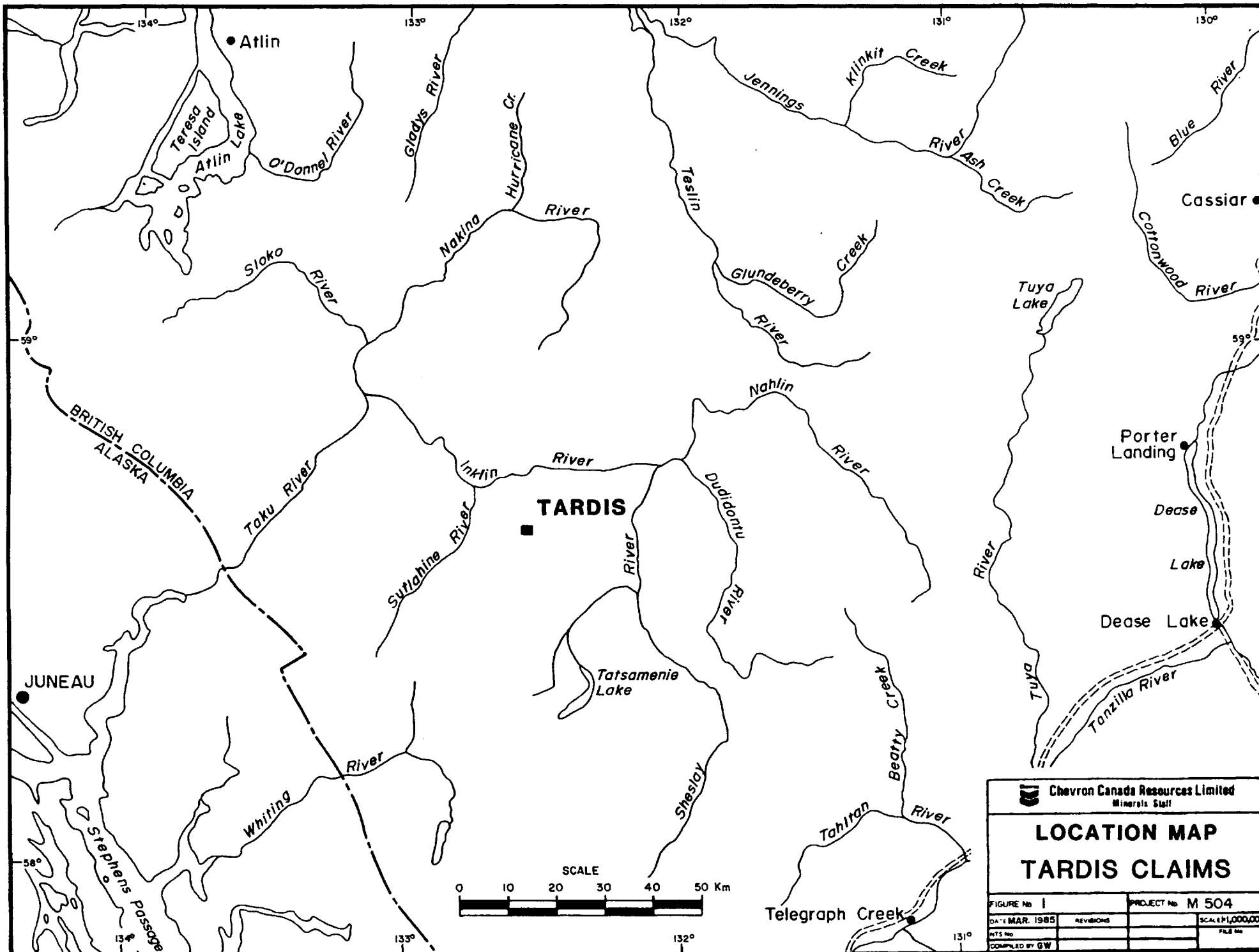
The expenditure to date on these claims is \$10,000. Can. (\$8,000. US). These claims expire on July 20, 1985. Your immediate approval is requested to surrender these claims.



G. WALTON

GW:am

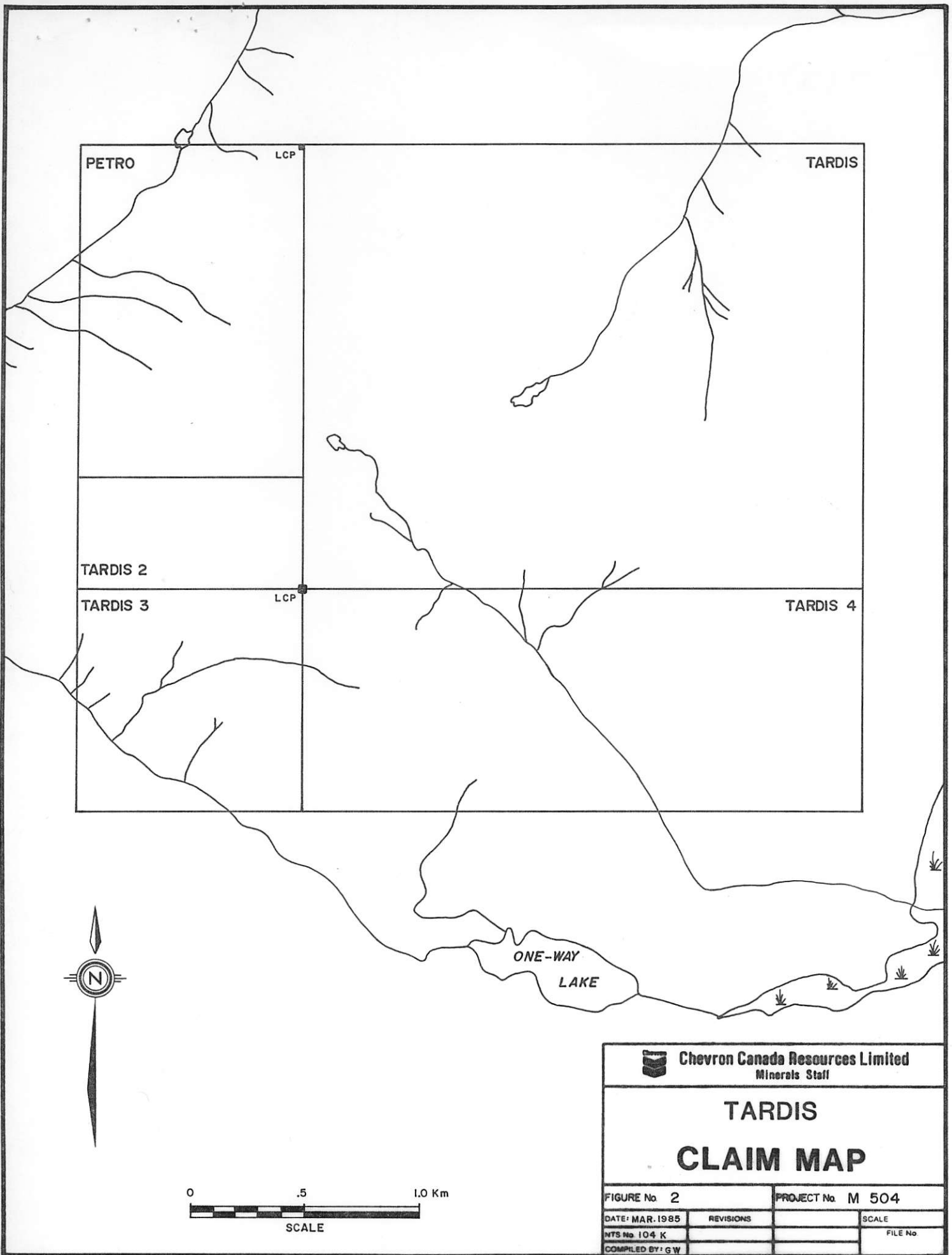
a14/52/1



Chevron Canada Resources Limited
Minerals Staff

LOCATION MAP
TARDIS CLAIMS

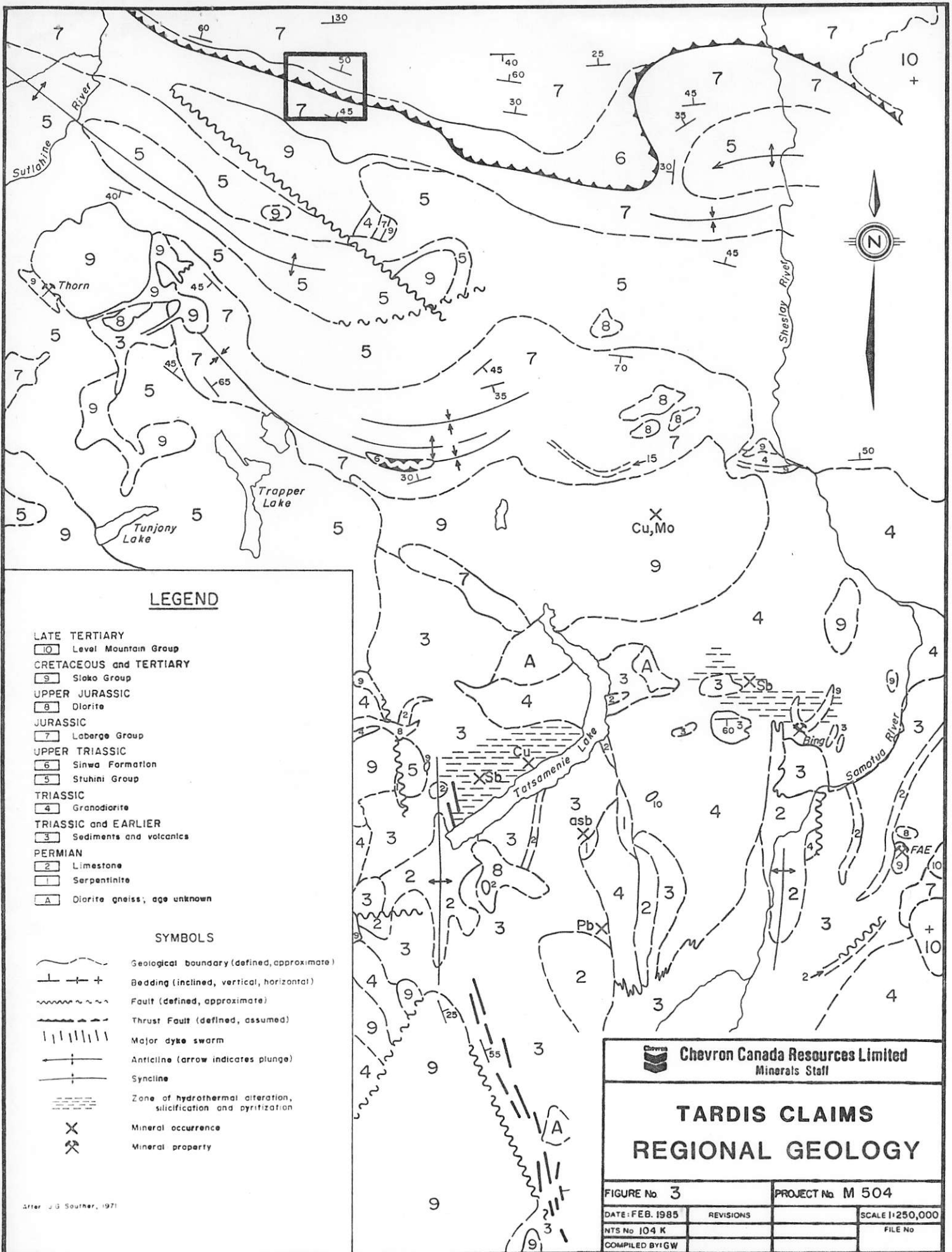
FIGURE No. 1	PROJECT No. M 504
DATE MAR. 1985	REVISIONS
DTS No.	SCALE 1:1,000,000
COMPILED BY GW	FILE No.



Chevron Canada Resources Limited
Minerals Staff

TARDIS
CLAIM MAP

FIGURE No 2		PROJECT No M 504	
DATE: MAR. 1985	REVISIONS	SCALE	FILE No.
NTS No 104 K			
COMPILED BY: G W			



LEGEND

LATE TERTIARY

10 Level Mountain Group

CRETACEOUS and TERTIARY

9 Siako Group

UPPER JURASSIC

8 Olorite

JURASSIC

7 Laberge Group

UPPER TRIASSIC

6 Sinwa Formation

5 Stuhmi Group

TRIASSIC

4 Granodiorite

TRIASSIC and EARLIER

3 Sediments and volcanics

PERMIAN

2 Limestone

1 Serpentinite

A Diorite gneiss, age unknown

SYMBOLS

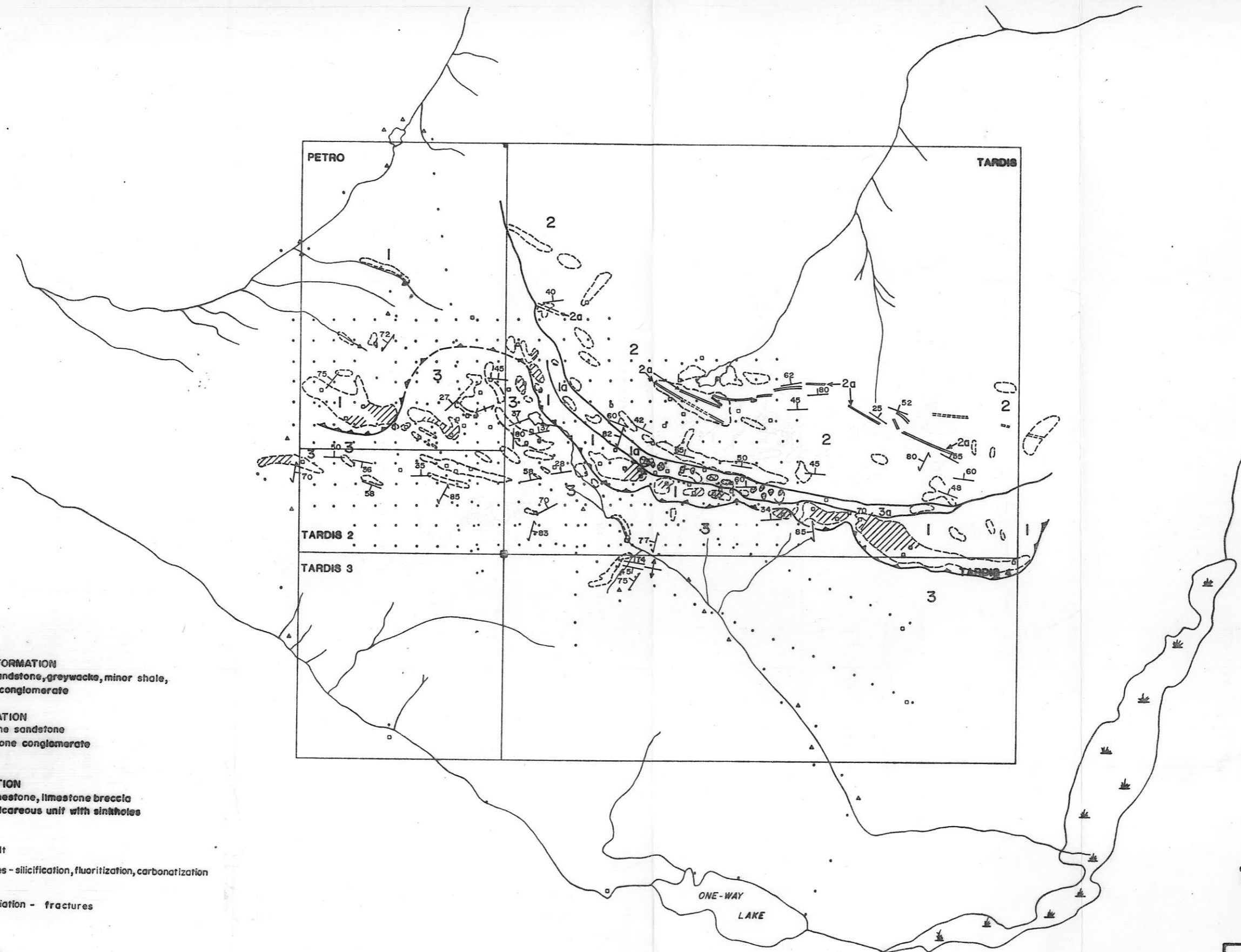
- Geological boundary (defined, approximate)
- Bedding (inclined, vertical, horizontal)
- Fault (defined, approximate)
- Thrust Fault (defined, assumed)
- Major dyke swarm
- Anticline (arrow indicates plunge)
- Syncline
- Zone of hydrothermal alteration, silicification and pyritization
- Mineral occurrence
- Mineral property

Chevron Canada Resources Limited
Minerals Staff

TARDIS CLAIMS
REGIONAL GEOLOGY

FIGURE No 3	PROJECT No M 504	
DATE: FEB. 1985	REVISIONS	SCALE 1:250,000
NTS No 104 K		FILE No
COMPILED BY GW		

After J.B. Southern, 1971



LEGEND

JURASSIC

- 3** TAKWAHONI FORMATION
 - Siliceous sandstone, greywacke, minor shale,
 - mudstone conglomerate

- 2** INKLIN FORMATION
 - Siltstone sandstone
 - UNIT 2a - Limestone conglomerate

TRIASSIC

- 1** SINWA FORMATION
 - Massive limestone, limestone breccia
 - UNIT 1a - Layered calcareous unit with sinkholes

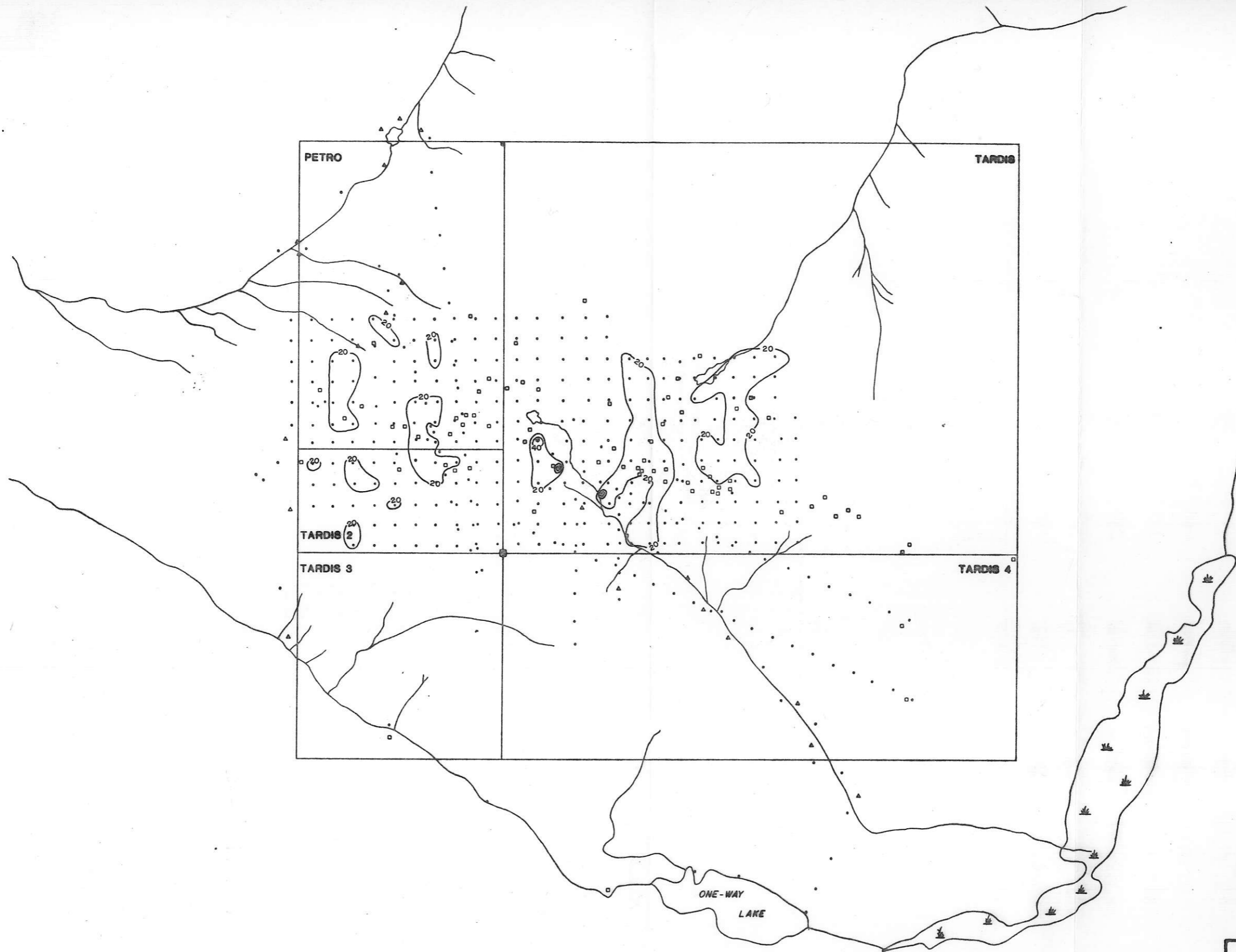
- Thrust fault
- Altered zones - silicification, fluoritization, carbonatization
- Sinkhole
- Bedding, foliation - fractures

ANTIFORM

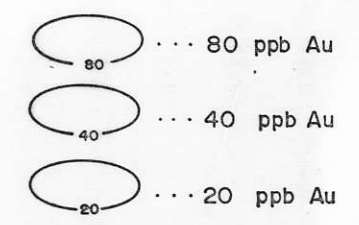
- Rock
- Soil
- Silt



Chevron Canada Resources Limited Minerals Staff		
TARDIS AND PETRO CLAIMS		
GEOLOGY		
FIGURE No.	PROJECT No. M 504	
DATE: MAR. 1985	REVISIONS	SCALE 1:20,000
SITS No. 104 K		FILE No.
COMPILED BY: GW		



CONTOUR INTERVALS



LEGEND

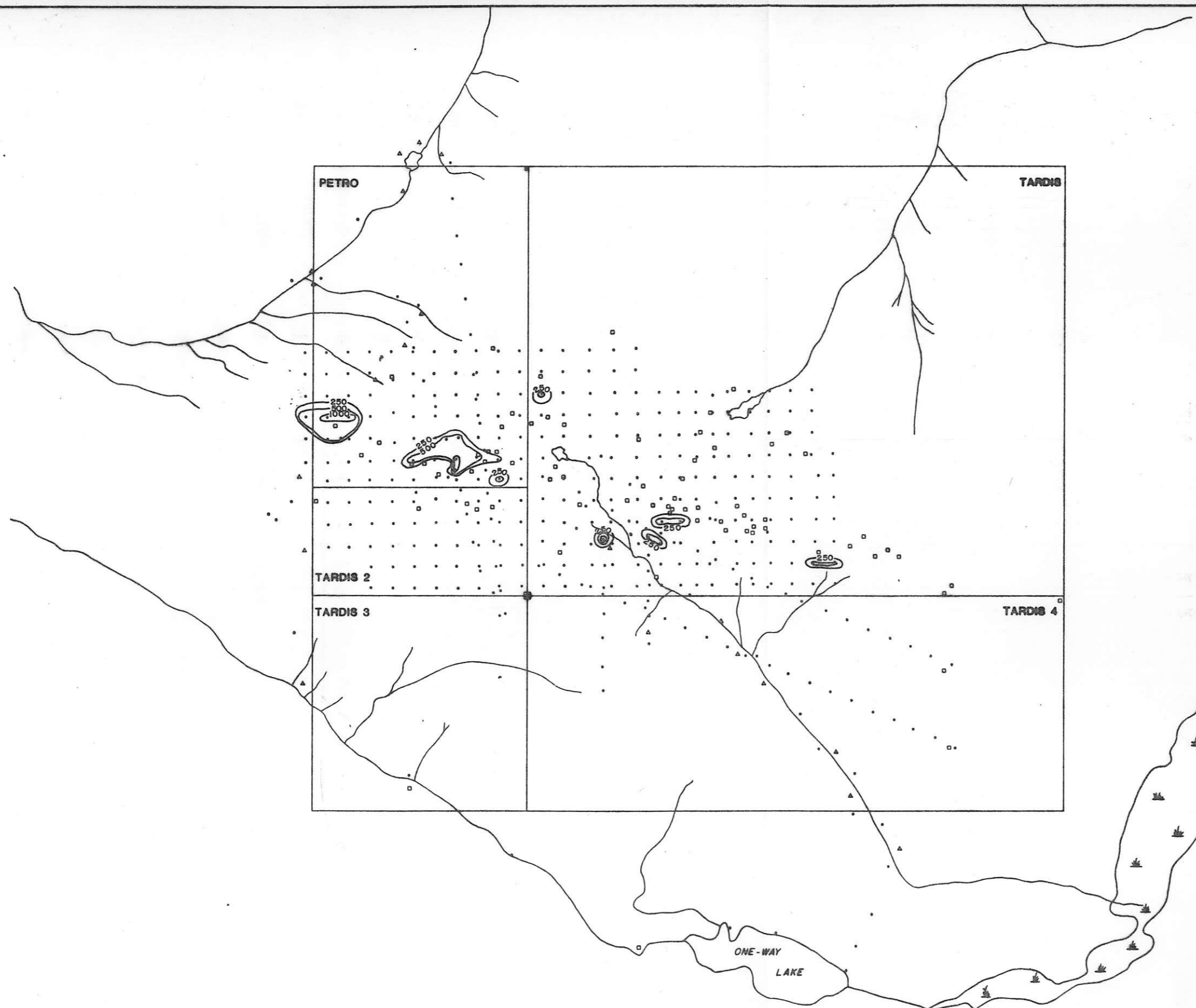
- Rock
- Soil
- △ Silt



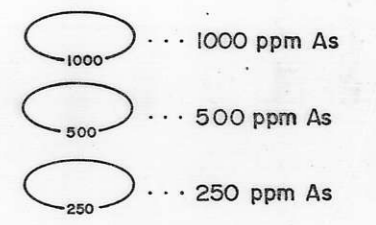
Chevron Canada Resources Limited
 Minerals Staff

TARDIS AND PETRO CLAIMS
GOLD
GEOCHEMISTRY

FIGURE No.	PROJECT No. M 504
DATE: MAR. 1985	REVISIONS:
RTS No. 104 K	SCALE 1:20,000
COMPILED BY: GW	FILE No.



CONTOUR INTERVALS



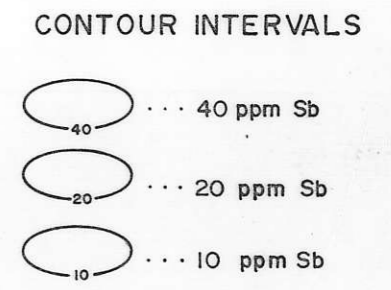
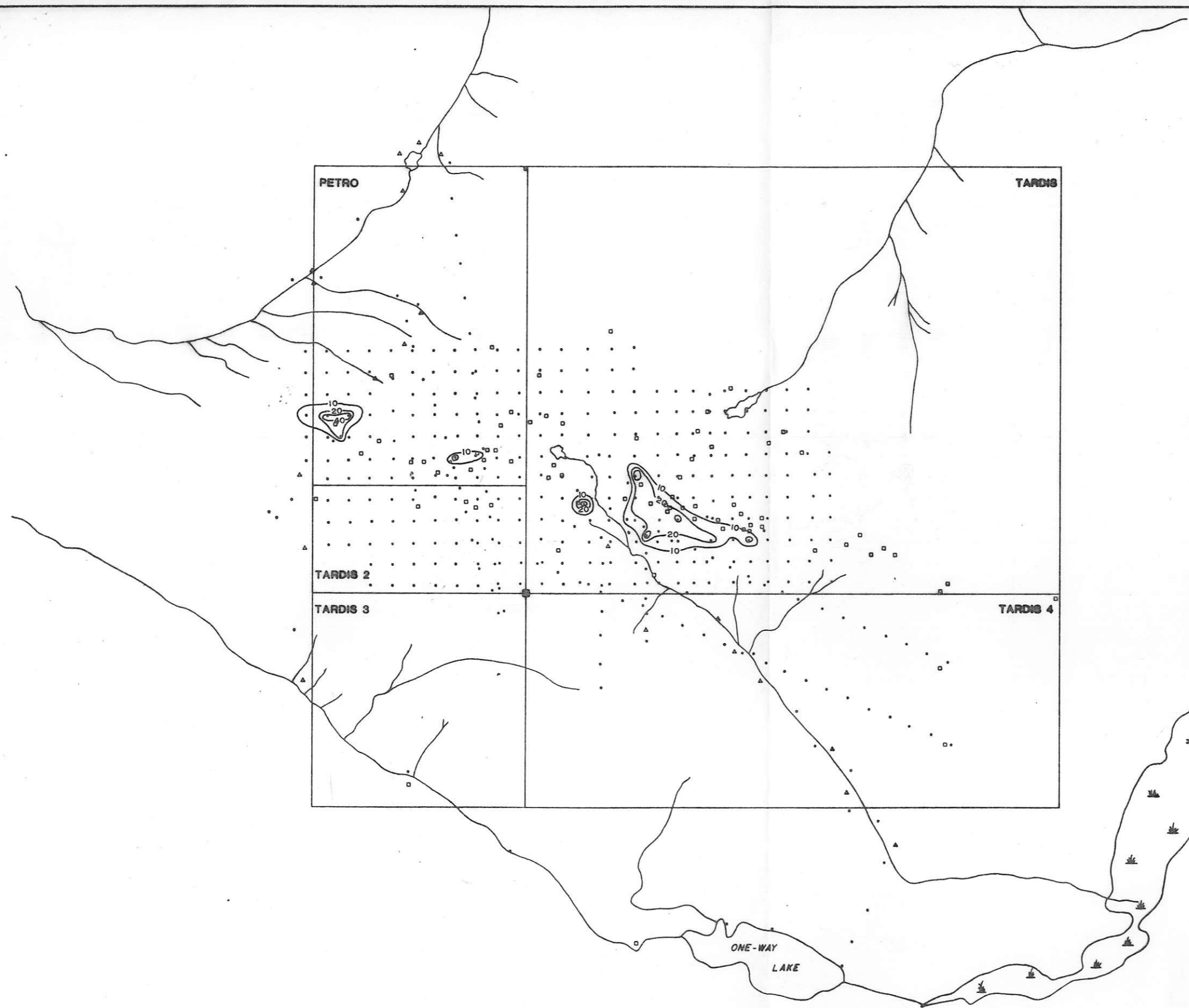
LEGEND

- Rock
- Soil
- △ Silt



Chevron Canada Resources Limited
 Minerals Staff
TARDIS AND PETRO CLAIMS
ARSENIC
GEOCHEMISTRY

FIGURE No. _____ PROJECT No. **M 504**
DRAWN: MAR. 1988 SCALE: 1:20,000



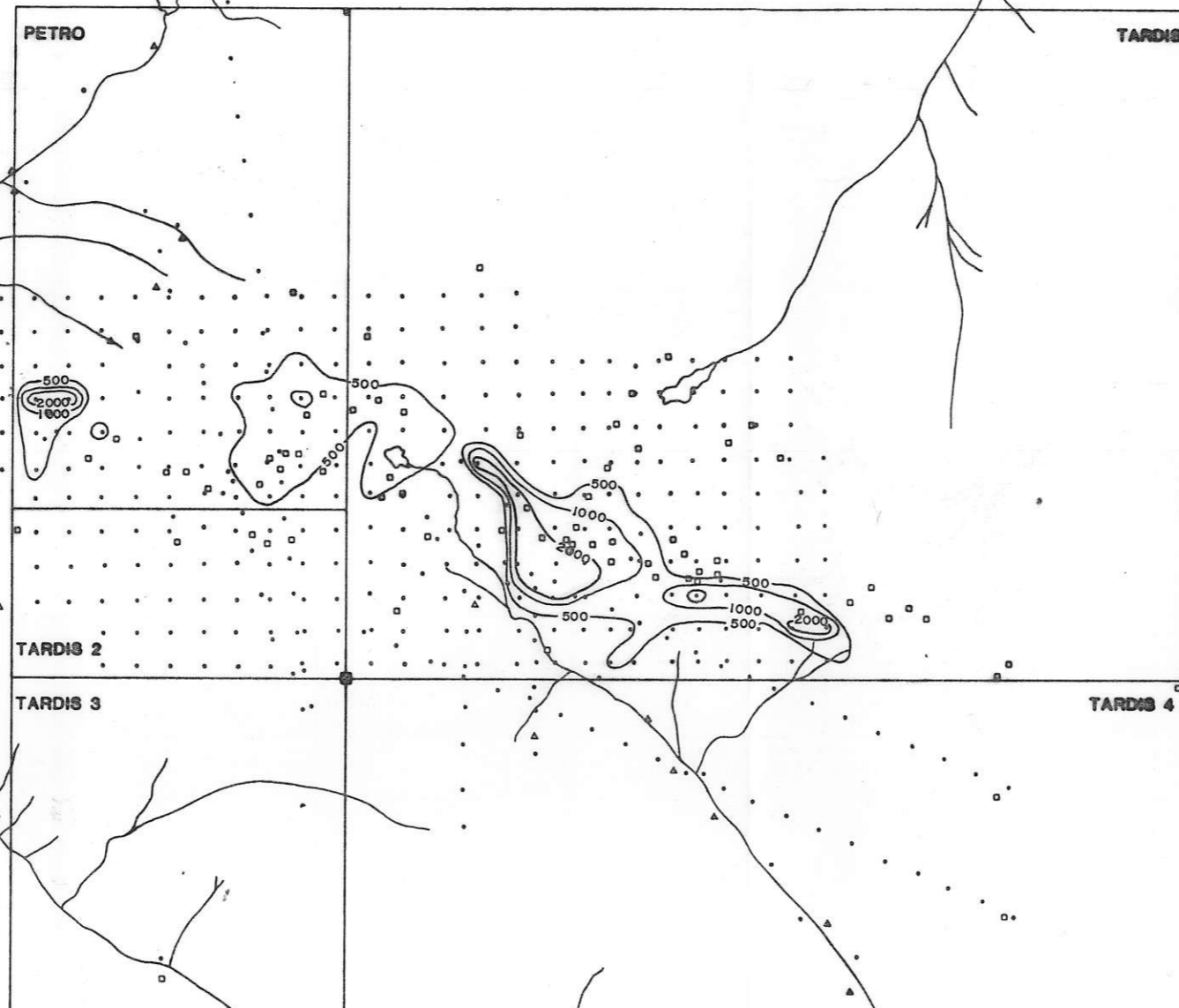
- LEGEND
- Rock
 - Soil
 - Silt



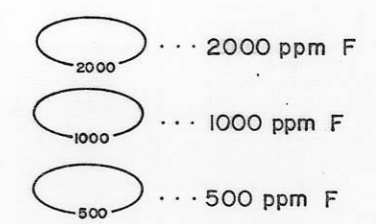
Chevron Canada Resources Limited
Minerals Staff

**TARDIS AND PETRO CLAIMS
ANTIMONY
GEOCHEMISTRY**

FIGURE No. _____ PROJECT No. **M 504**



CONTOUR INTERVALS

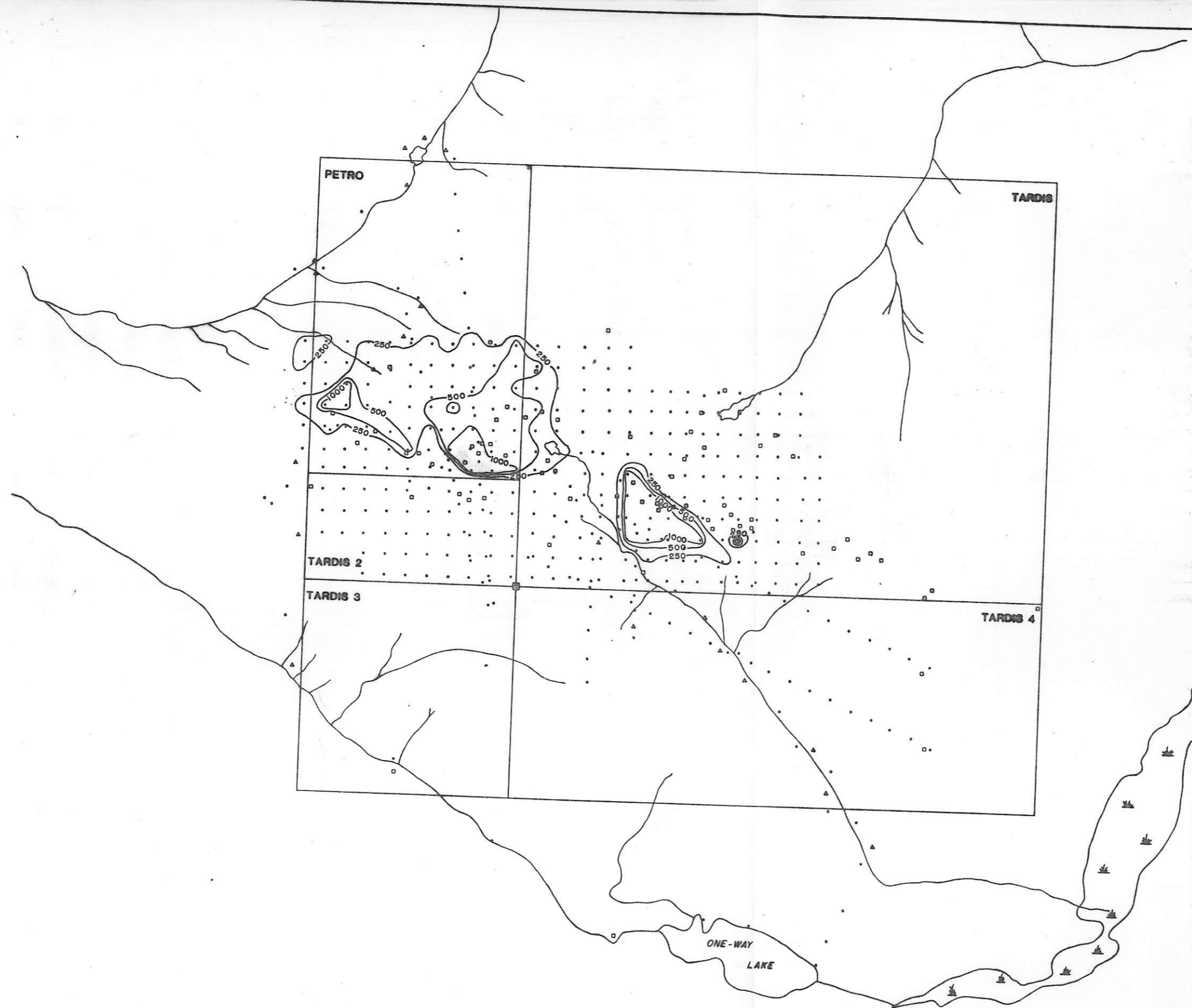


LEGEND




- Rock
- Soil
- △ Silt






Chevron Canada Resources Limited Minerals Staff	
TARDIS AND PETRO CLAIMS FLOURINE GEOCHEMISTRY	
FIGURE No.	PROJECT No. M 504
DATE: MAR. 1988	REVISIONS
SCALE 1:20,000	




CONTOUR INTERVALS

-  ··· 1000 ppm Hg
-  ··· 500 ppm Hg
-  ··· 250 ppm Hg

LEGEND

-  Rock
-  Soil
-  Silt



 Chevron Canada Resources Limited
 Minerals Staff
TARDIS AND PETRO CLAIMS
MERCURY
GEOCHEMISTRY