

842009

1979-09-19

Rejected  
(temporarily)  
~ 20 Oct 79

*Tough area  
we need to see  
results Buchhorn.  
Also should assess  
problems on the ground.*

SUMMARY NOTES

BATEAUX CLAIM

Location: Kitgoro Inlet 50 km WSW of Sandspit, W. coast of Moresby Island.

Claims: 12 units. Needs additional claim coverage.

Geology: A NW trending fault block of Kunga limestone (and minor limy argillite) is bounded by Karmutsen andesites. Some Yakoun pyroclastics are also present. The Kunga and Yakoun are both cut by at least 3 quartz eye rhyolite dykes 40 or 50 metres wide.

The limestones, pyroclastics, and dykes all contain widespread disseminated pyrite. Intense silicification accompanies the dykes, and quartz veining is common in several areas.

Mineralization: Geochemical highs are associated with all rock types, and are well grouped. For example, 8 nearly adjacent samples over a 240 metre traverse range from 20 to 190 ppb Au. One quartz stringer assayed 0.15 oz/ton Au, in quartz porphyry host yielding 700 ppb Au. Highs elsewhere include a 6000 ppb, a 1600 ppb, and 1200 ppb sample.

1500 m SW of the claim, there is a creek with four adjacent silt samples over a 500 m traverse ranging from 960 to >5000 ppb Hg.

Conclusions: The reconnaissance results are quite encouraging, although a greater quantity of limy argillite (in theory the best host) would be desirable.

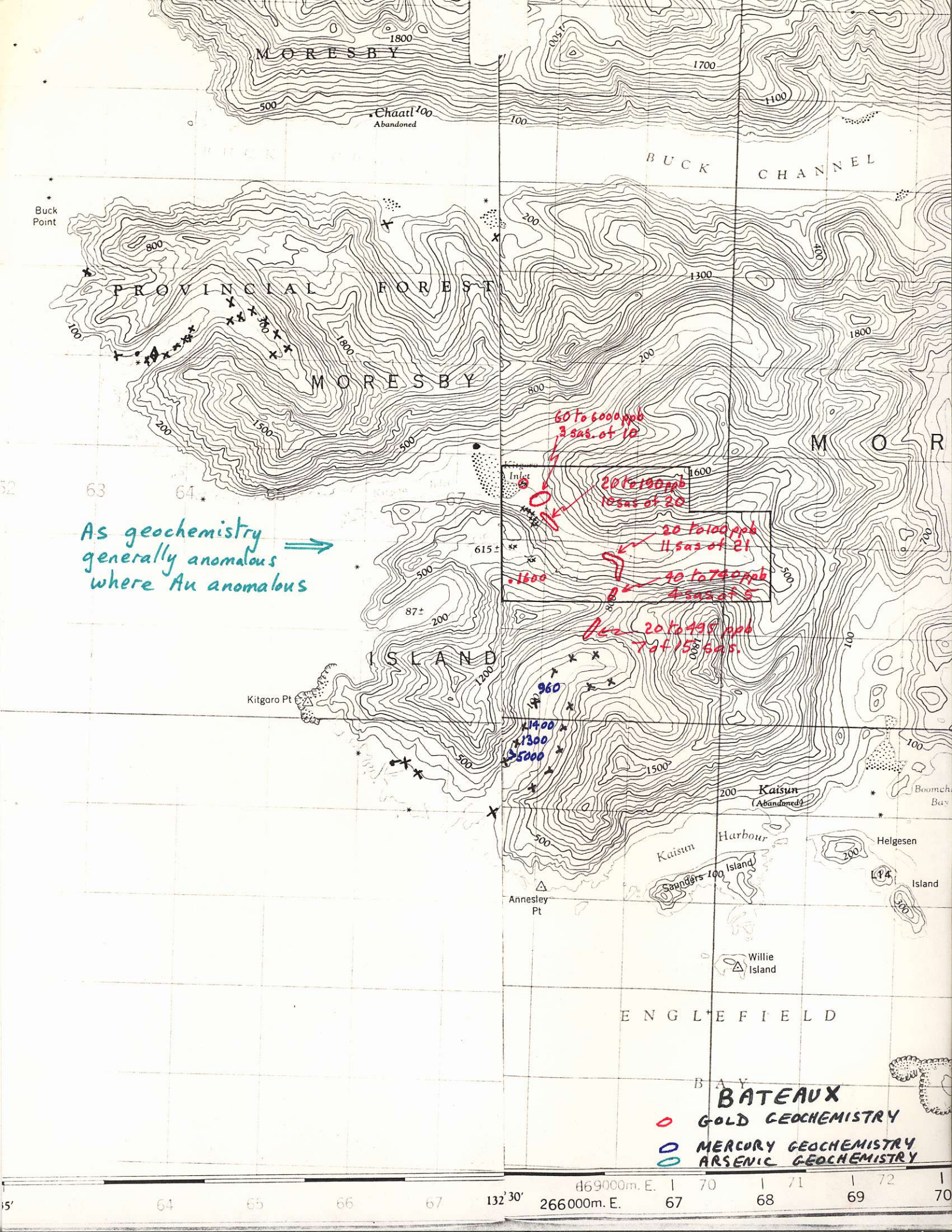
Most of the Kunga present would seem to be the lowest (massive) member which has the minimum argillaceous component of the typical Kunga section.

The remarkable apparent similarity to the Buckhorn property should be kept in mind and we should perhaps await more information from the latter before considering a program on the Bateaux.

*D.A.*

D. Arscott

Note: This property was not visited (although flown over) by D.A. The above summary represents the results of property visits by J.M.T., Prism Resources, Noranda Exploration and McIntyre Mines, as recorded by G. Richards.



As geochemistry generally anomalous where Au anomalous →

60 to 6000 ppb  
3 sas. of 10

20 to 190 ppb  
10 sas. of 20

20 to 100 ppb  
11 sas. of 21

40 to 700 ppb  
4 sas. of 8

20 to 490 ppb  
7 of 15 sas.

960

1400

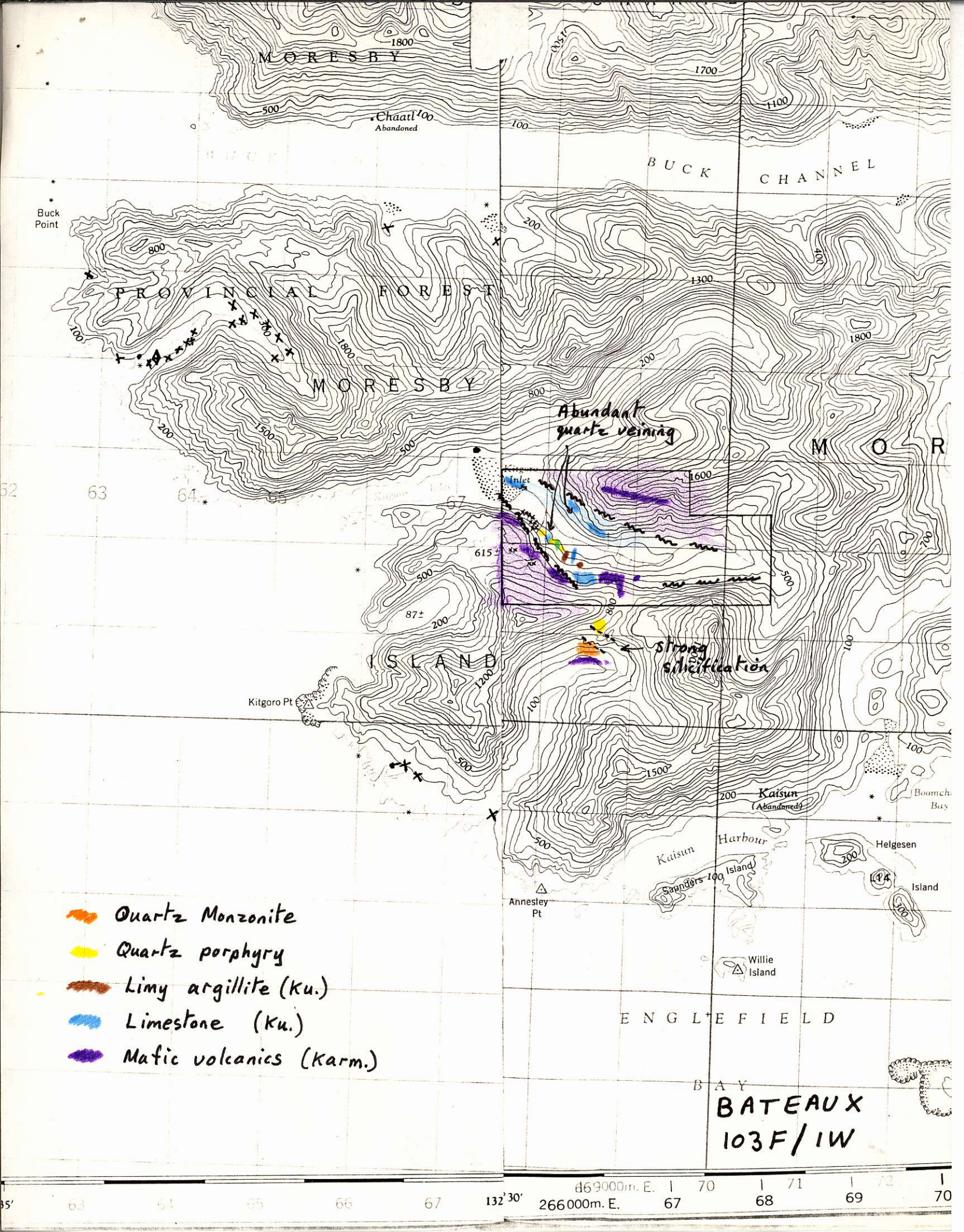
1300

5000

**BATEAUX**

- GOLD GEOCHEMISTRY
- MERCURY GEOCHEMISTRY
- ARSENIC GEOCHEMISTRY

469000m. E. | 70 | 71 | 72 | 1  
266000m. E. | 67 | 68 | 69 | 70



M O R E S B Y  
 1800  
 500  
 Chaatl'oo  
 Abandoned

B U C K  
 C H A N N E L

Buck Point

P R O V I N C I A L F O R E S T

M O R E S B Y

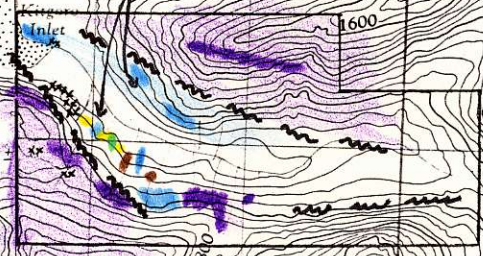
Abundant  
 quartz veining

M O R

52

63

64








Strong  
 silicification

Kitgoro Pt

I S L A N D

Kaisun  
 (Abandoned)

Boomch Bay

-  Quartz Monzonite
-  Quartz porphyry
-  Limy argillite (Ku.)
-  Limestone (Ku.)
-  Mafic volcanics (Karm.)

E N G L E F I E L D

B A T E A U X  
 103F/1W






ISLANDS

PROVINCIAL FOREST

MORESBY

M O

ISLAND

-  *Yakou?* mixed seds + vecls
-  *Konga calcareous argillite*
-  *Konga massive limestone* 63
-  *Karnotsen greenstone*
-  *Qtz eye porphyry dyke*

3x4 (12 units)  
 BATEAUX →  
 Tag Nos 34222  
 Staked July 5, 1978

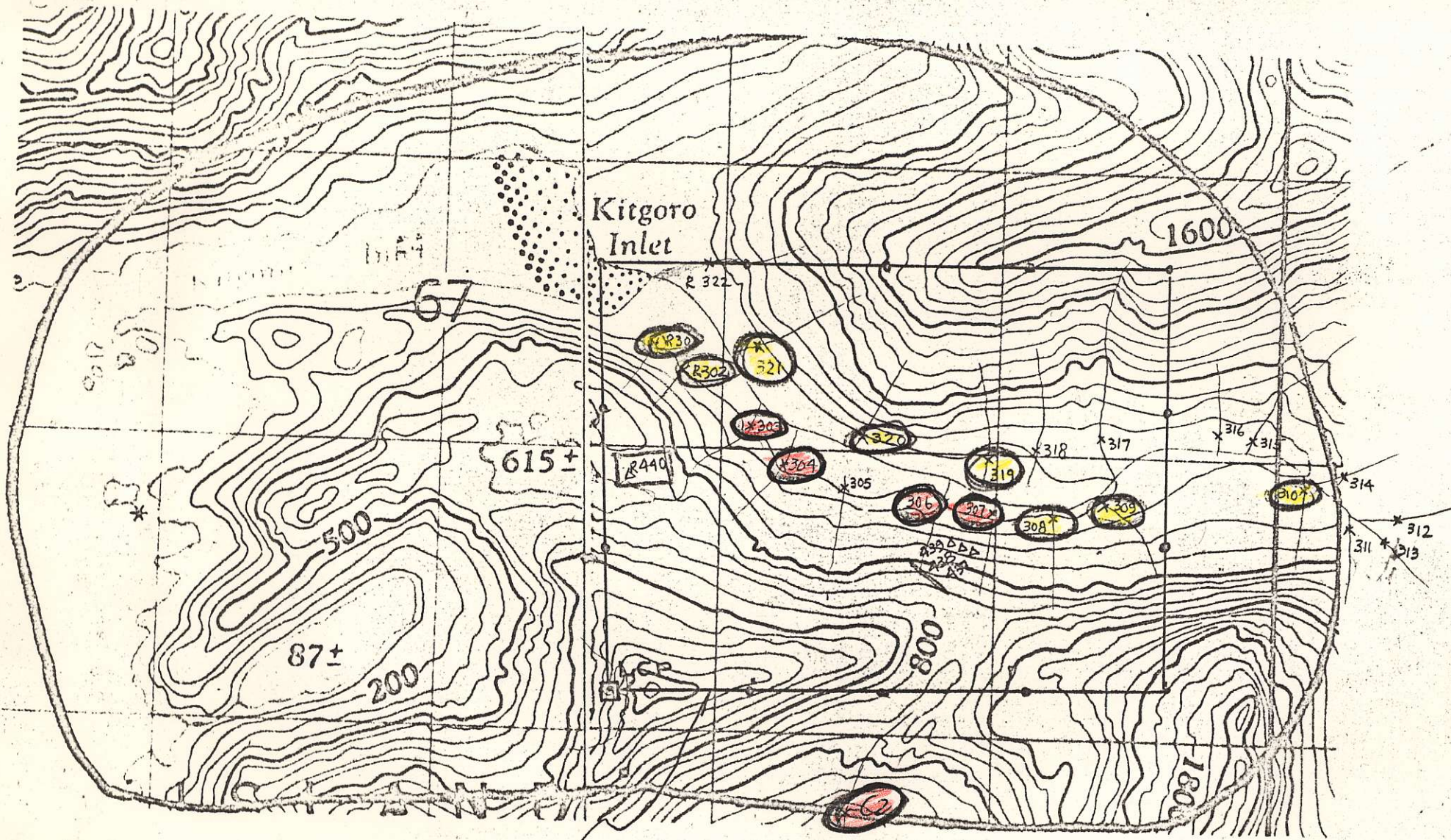
59

59

59

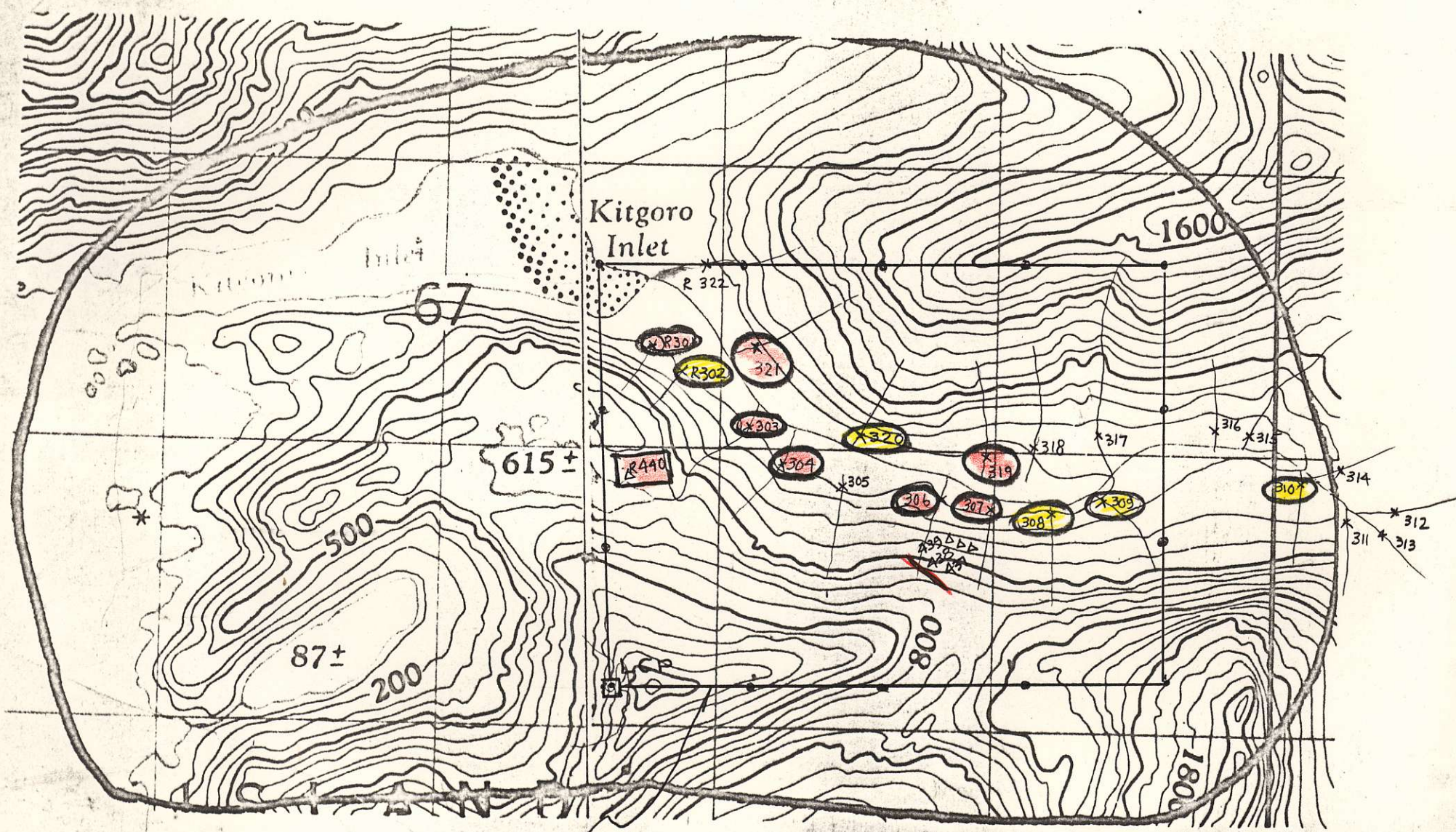


12-15  
10000



BATEAUX (12 units)  
Tag No 34222  
staked July 5, 1978

1.20,000  
17-78



BATEAUX (12 units)  
Tag No 34222  
Staked July 5, 1978

# BONDAR-CLEGG & COMPANY LTD.

## Geochemical Lab Report

Report No. 28 - 200

Page No. 3

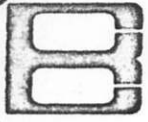
SAMPLE NO.	As ppm	Au ppb	Hg ppb		SAMPLE NO.	As ppm	Au ppb	Hg ppb	
					78R - 315	10	< 5	120	
					316	25	< 5	180	
					317	53	< 5	640	
					318	28	< 5	325	
					319	(400)	(15)	580	
					320	(180)	(10)	260	
					321	(100)	(15)	240	
					322	50	< 5	85	

*active*

As Au Hg

301	70	(15)	420
302	55	(10)	355
303	(110)	(20)	(570)
304	65	(35)	(980)
305	50	5	180
306	55	(20)	235
307	(440)	(25)	(1800)
308	(90)	(10)	720
309	70	(10)	(760)
310	2	(10)	235
311	5	< 5	345
312	20	< 5	195
313	20	< 5	195
314	23	< 5	150





# BONDAR-CLEGG & COMPANY LTD.

1500 PEMBERTON AVE., NORTH VANCOUVER, B.C. PHONE: 985-0681 TELEX: 04-54554

## Geochemical Lab Report

323-354  
BATEAUX

As; Perchloric Nitric  
Hg; Controlled Aqua Regia  
Au; Fire Assay & Hot Aqua Regia  
Hg; Closed cell Atomic Absorption

Report No. 28 - 200

Au; Atomic Absorption As; Colorimetric

From JMT Services Corp.

Fraction Used

Date May 26 19 78

SAMPLE NO.	As ppm	Au ppb	Hg ppb	
78C - 1	60	< 5	165	↑
2	52	320	280	UPPER BALLS C
3	7	< 5	125	↓
4	35	< 5	475	Ball
5	8	< 5	960	↓
6	10	< 5	1400	↓
7	5	< 5	1300	↓
8	5	< 5	>5000	↓

SAMPLE NO.	As ppm	Au ppb	Hg ppb	
------------	--------	--------	--------	--

78 C 61	70	< 5	60	1000
62	25	< 5	115	
63	120	< 5	55	
64	23	< 5	25	
65	55	5	55	
66	110	< 5	145	

# BONDAR-CLEGG & COMPANY LTD.

## Geochemical Lab Report

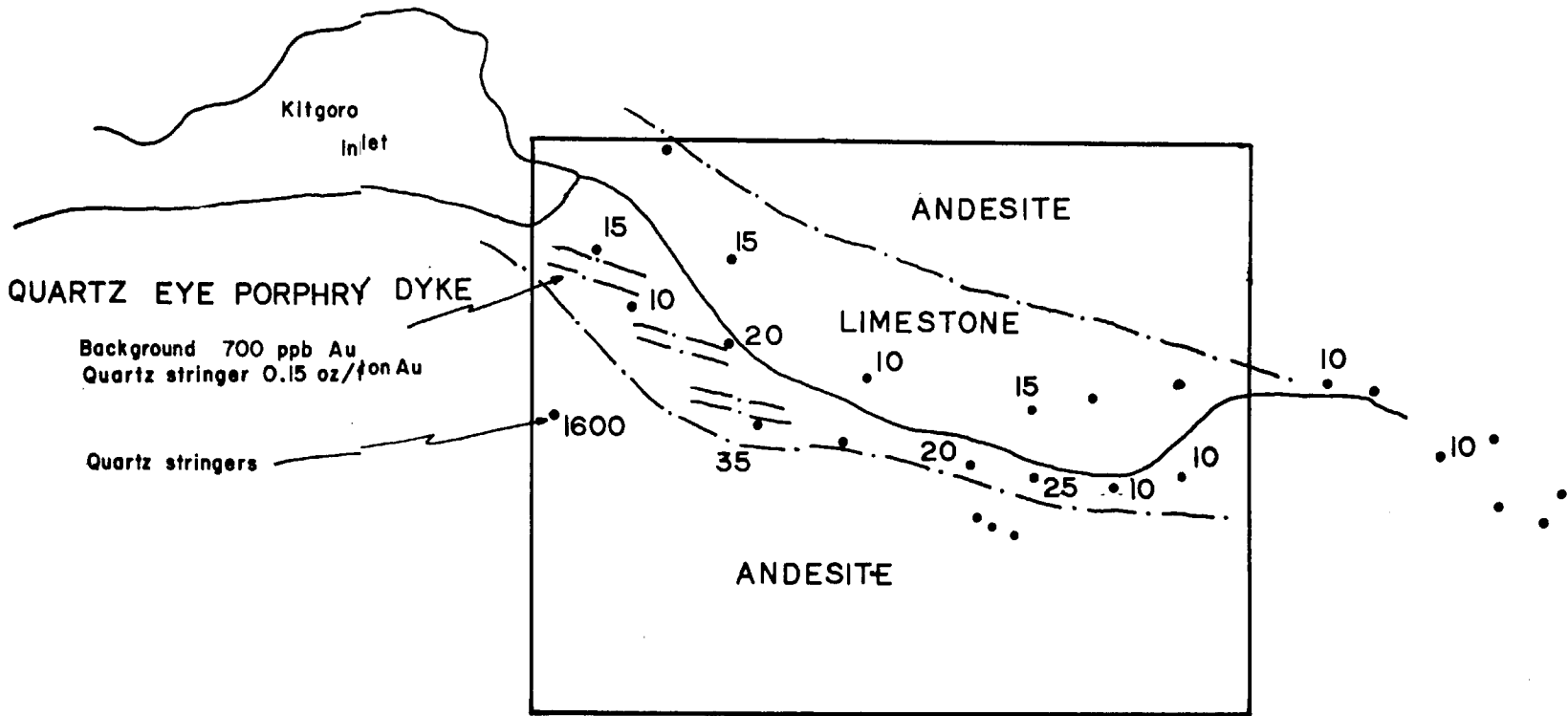
Report No. 28 - 200

Page No. 2

SAMPLE NO.	As ppm	Au ppb	Hg ppb
78C - 67	110	< 5	95
68	110	< 5	65
69	55	< 5	225
70	440	< 5	170
71	25	< 5	50
72	55	< 5	120
73	70	5	115
74	20	< 5	35
75	53	< 5	140
76	58	< 5	860
77	90	5	560
78	60	< 5	95
79	30	< 5	105
80	55	< 5	90
81	60	10	155
78R - 208	53	< 5	310
209	55	< 5	590
210	28	< 5	3960
211	60	< 5	550
212	20	< 5	>5000
213	15	< 5	1100
214	8	< 5	>5000
215	45	< 5	>5000
216	25	< 5	430
217	180	10	255

B

A



**General**

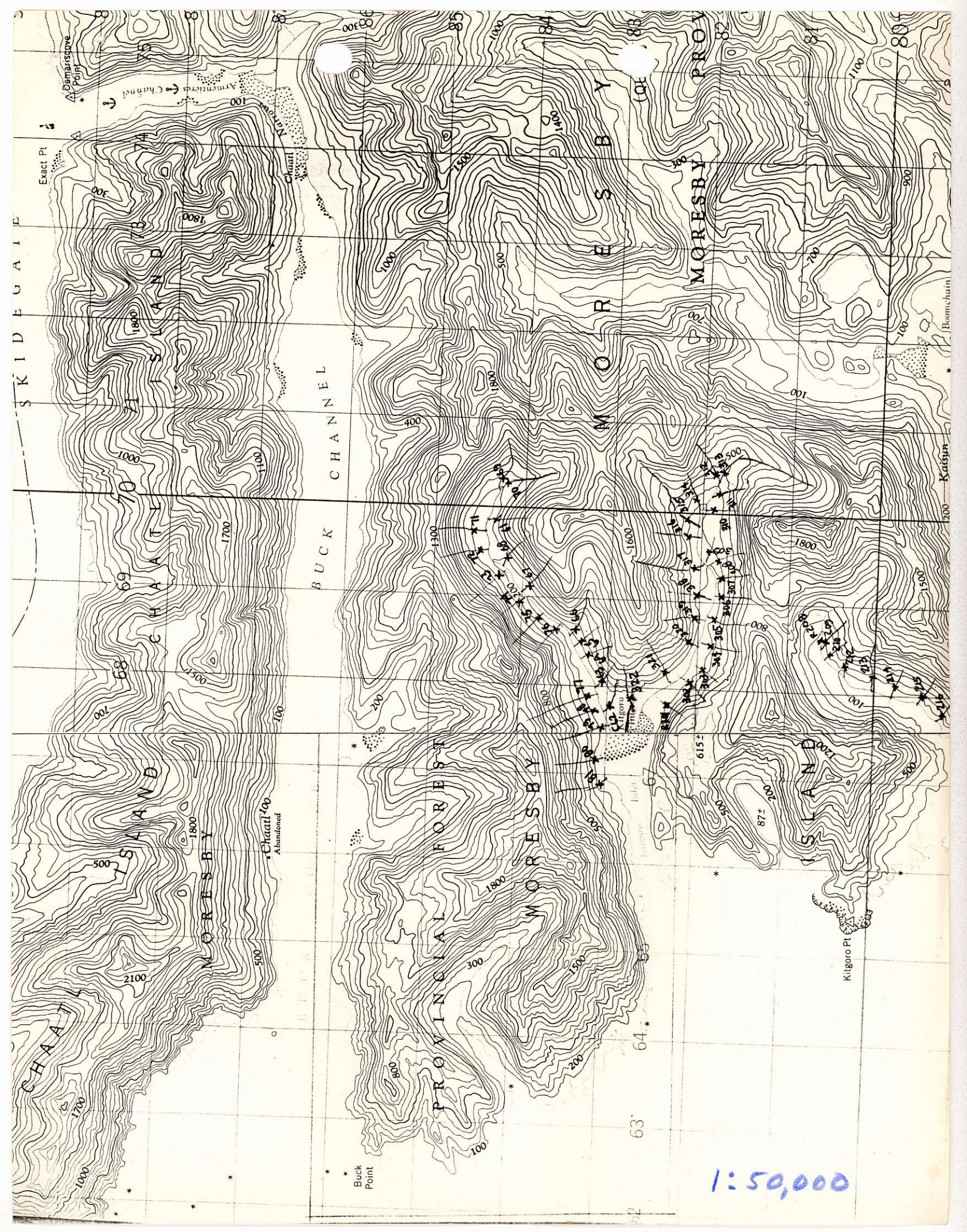
Good As correlation  
 Spot Hg highs

• 320

**BATEAUX**

• 10  
 Sample points, ppb Au

0 800 1600 feet



1:50,000

ILET

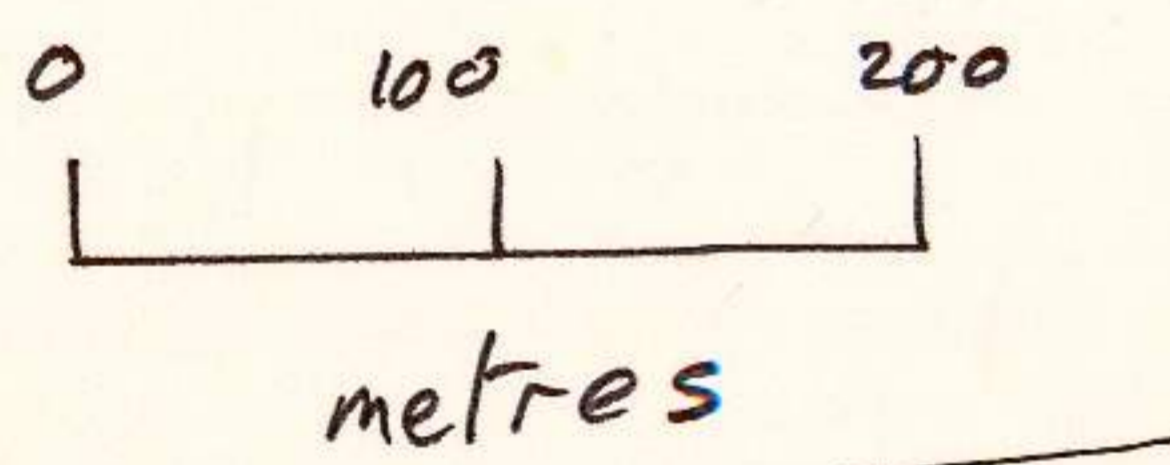
1500 ft.

1000 ft.

500 ft.

Lake  
615 ft ±

500 ft.

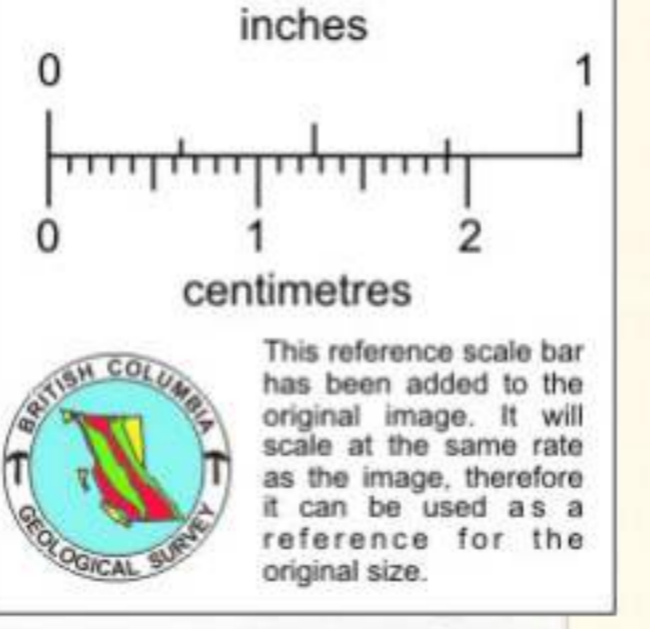


0.1500 Au in  
g. stringer  
bkqnd = 700 ppb

1200 ppb  
0.036 oz/ton

1600  
in g. stringers

Legal Post  
BATEAUX  
Mineral Claim



- 9c3750
- Δ 9c36160
- 530 B - 740 (Float)
- 9c3540 - Float 90
- PATCHY ALT  
IN QFP.

- STRONG  
SILICIFICATION
- 9c3230
  - 9c31400
  - 9c30495B
  - 9c3010
  - Δ 9c2910
  - 9c2820
  - 9c2720
  - 9c2540
  - 9c2430
  - 9c2370
  - 9c2270
  - 9c21430
  - 9c1910
- Q<sub>3</sub> Monz.  
Karm

BATEAUX

RY

le

t 7, 1978