

Rejected
~15 Oct 79

1979-10-09

842004

SUMMARY NOTES

BERESFORD

- Location: 116 km NW of Sandspit, Q.C.I.
Access by air only
- Claims: None at present.
- Geology: Virtually unknown. This is an area of extensive cover. Government mapping suggests that it is almost entirely underlain by Masset volcanics. However, the presence of Haida sediments to the N and NW suggests the possibility of windows in the Masset unconformity, especially at lower elevations.
- Geochemistry: The best clustering of anomalous samples is in the Jana Koot valley. They may relate either to an undiscovered window in the Masset, or to what could well be an underlying major fault.
- Discussion: The data is inadequate to form any real conclusion, although this could be upgraded to some extent. A fair number of small drainages could be sediment-sampled, but the extensive cover provides little hope for a better understanding of the geology.
- The cover (including much swamp), and relatively poor access would render this area difficult to explore.

D.A.

D. ARSCOTT



Haida

Masses

Tectonic Pluton

PIVOT MOUNTAIN 1922

Abundant Andesite porphyry

"Conspicuous Cone"

Andesite/Dacite porphyry
Minor argillite
Basalt
Minor pyritic grey tuff

Andesite/basalt

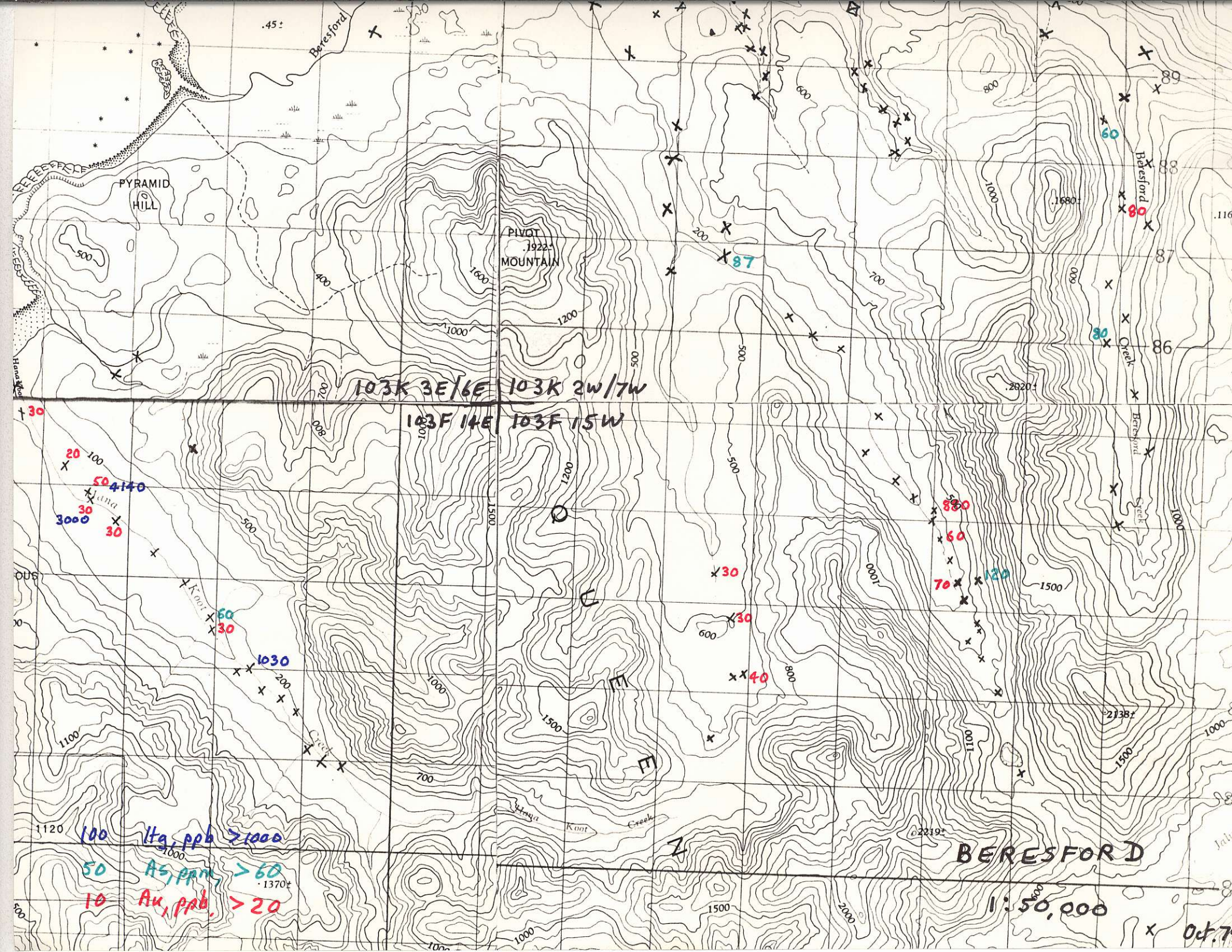
Lineaments

Crude rendering of Sutherland-Brown geology.

BERESFORD

1:50,000

Oct. 79



.45

Beresford

PYRAMID HILL

PIVOT MOUNTAIN
1922

Beresford

103K 3E/6E 103K 2W/7W

103F 14E 103F 15W

20
100
50 4140
30
3000
30

60
30
1030

30
30
40

80
60
70
120

1120
100
1000
100
1000
1370+

Hg, ppb > 1000
As, ppm > 60
Au, ppb > 20

BERESFORD

1:50,000

Oct. 7

