

132°15' 84 | 685000m. E. 86 | 87 | 88 | 10' 89 | 90 | 91 | 92 | 93 | 94 | 05' 95 | 96 | 97 | 98 | 99 | 131°

284000m. E. 85 | 86 | 87 | 88 | 89 | 90 | 91 | 92 | 93 | 94 | 95 | 96 | 97 | 98 | 99

Skidegate 2 1/2 m 99

Map by the ARMY SURVEY ESTABLISHMENT, R.C.E.  
 Information depicted current as of 1964. Printed 1965.  
 Map may be obtained from the Map Distribution Office,  
 Department of Mines and Technical Surveys, Ottawa.

# YAKOUN LAKE

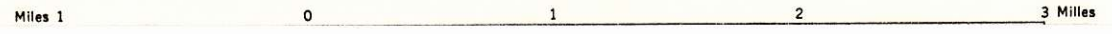
841986

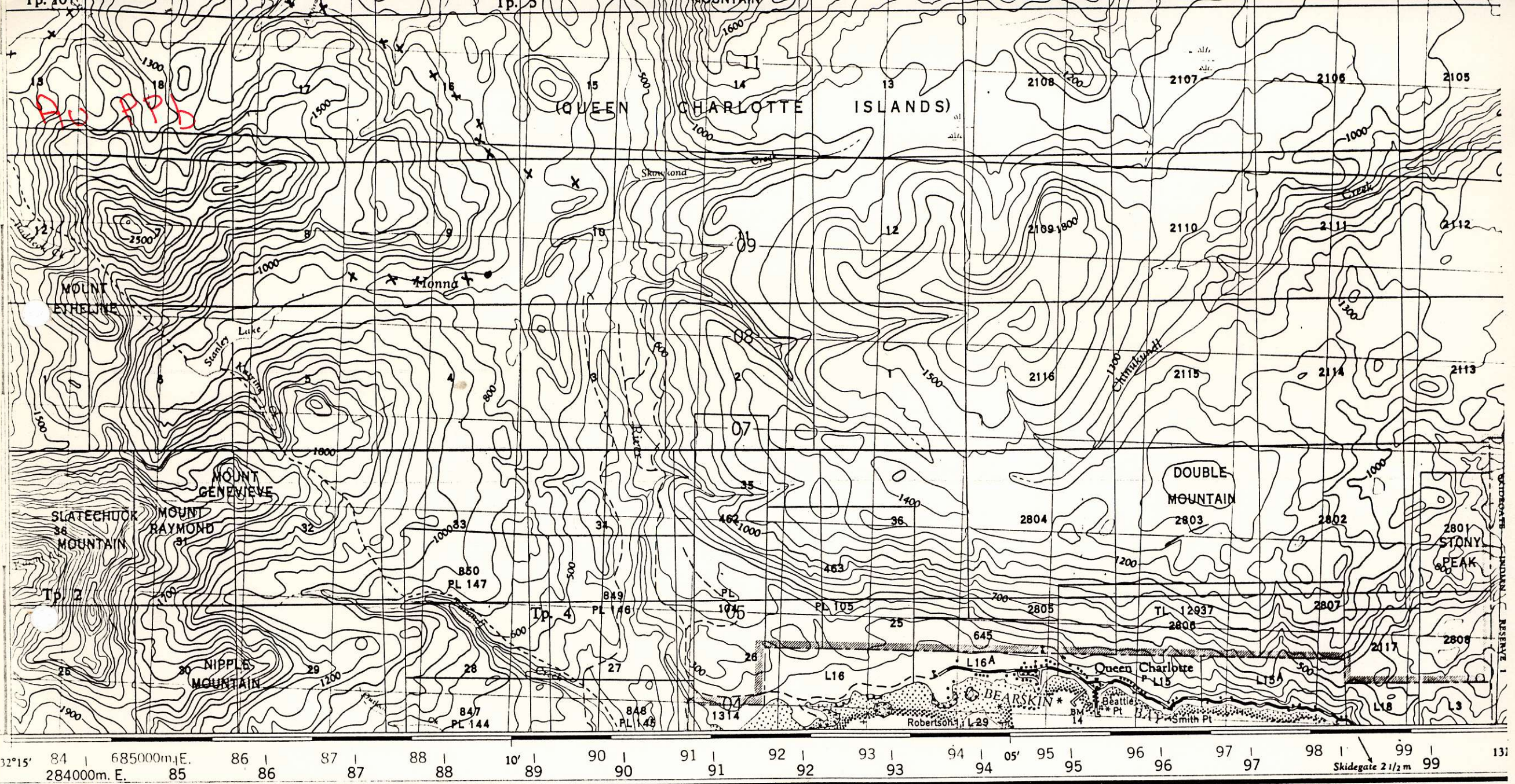
QUEEN CHARLOTTE DISTRICT  
 BRITISH COLUMBIA

SCALE 1:50,000 ÉCHELLE

Publiée par le SERVICE TOPOGRAPHIQUE DU  
 (G.R.C.) Renseignements à jour en 1964. Imprimé  
 Ces cartes sont en vente au Bureau de distribution  
 du ministère des Mines et des Relevés techniques, Ottawa

NTS 103 F/8 E





by the ARMY SURVEY ESTABLISHMENT, R.C.E.  
 as depicted current as of 1964. Printed 1965.  
 may be obtained from the Map Distribution Office,  
 Department of Mines and Technical Surveys, Ottawa.

# YAKOUN LAKE

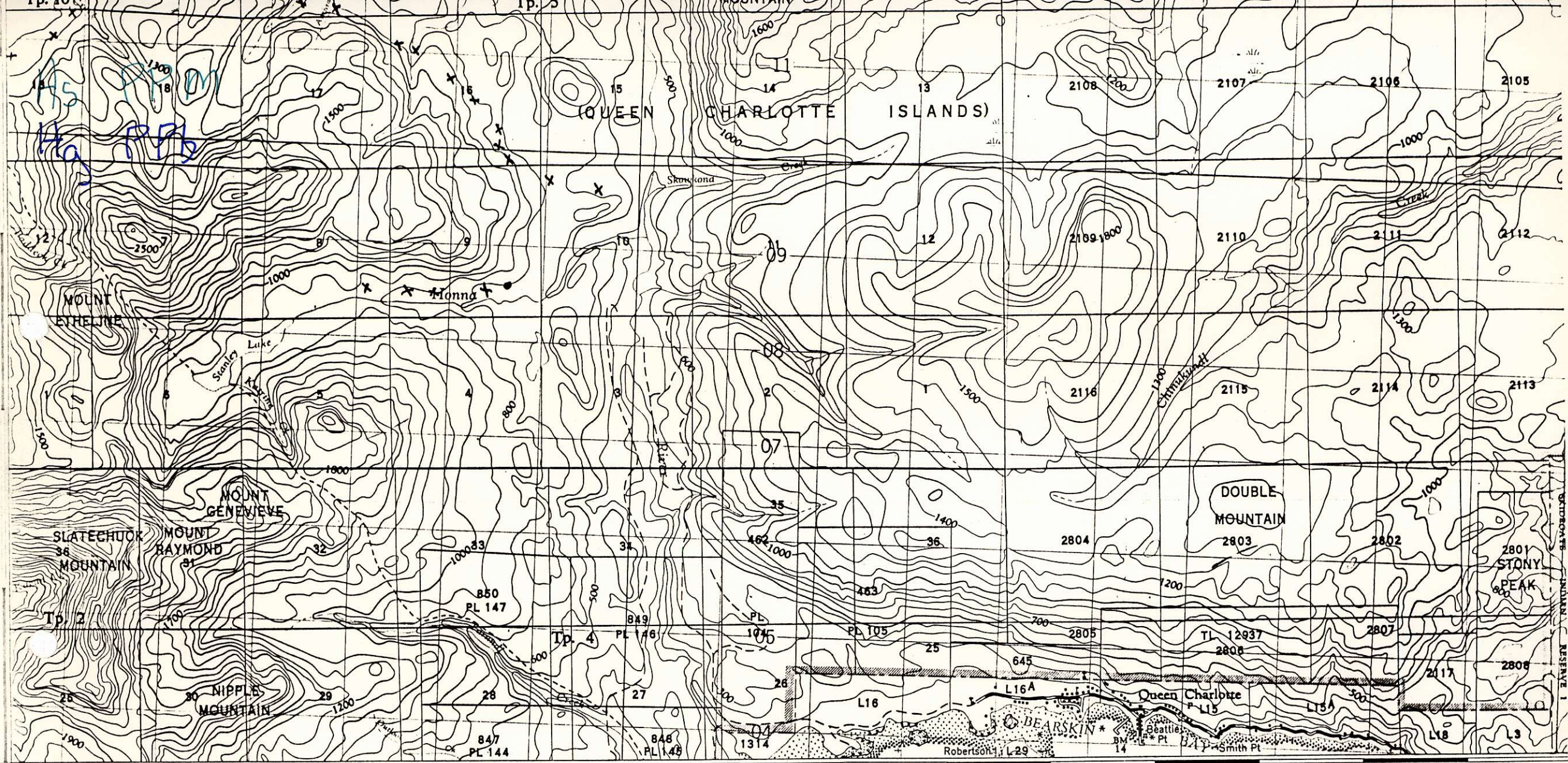
QUEEN CHARLOTTE DISTRICT

BRITISH COLUMBIA

SCALE 1:50,000 ÉCHELLE

Publiée par le SERVICE TOPOGRAPHIQUE DU  
 (G.R.C.) Renseignements à jour en 1964. Imprimé  
 Ces cartes sont en vente au Bureau de distribution  
 du ministère des Mines et des Relevés techniques, Ottawa.

NTs 103 F/8 E



32°15' 84 | 685000m E. 86 | 87 | 88 | 10' 89 | 90 | 91 | 92 | 93 | 94 | 05' 95 | 96 | 97 | 98 | 99 | 131  
 284000m. E. 85 | 86 | 87 | 88 | 89 | 90 | 91 | 92 | 93 | 94 | 95 | 96 | 97 | 98 | 99 | Skidegate 2 1/2 m 99

by the ARMY SURVEY ESTABLISHMENT, R.C.E.  
 on depicted current as of 1964. Printed 1965.

may be obtained from the Map Distribution Office,  
 Department of Mines and Technical Surveys, Ottawa.

# YAKOUN LAKE

QUEEN CHARLOTTE DISTRICT

BRITISH COLUMBIA

SCALE 1:50,000 ÉCHELLE

Publiée par le SERVICE TOPOGRAPHIQUE DU  
 (G.R.C.) Renseignements à jour en 1964. Imprimé

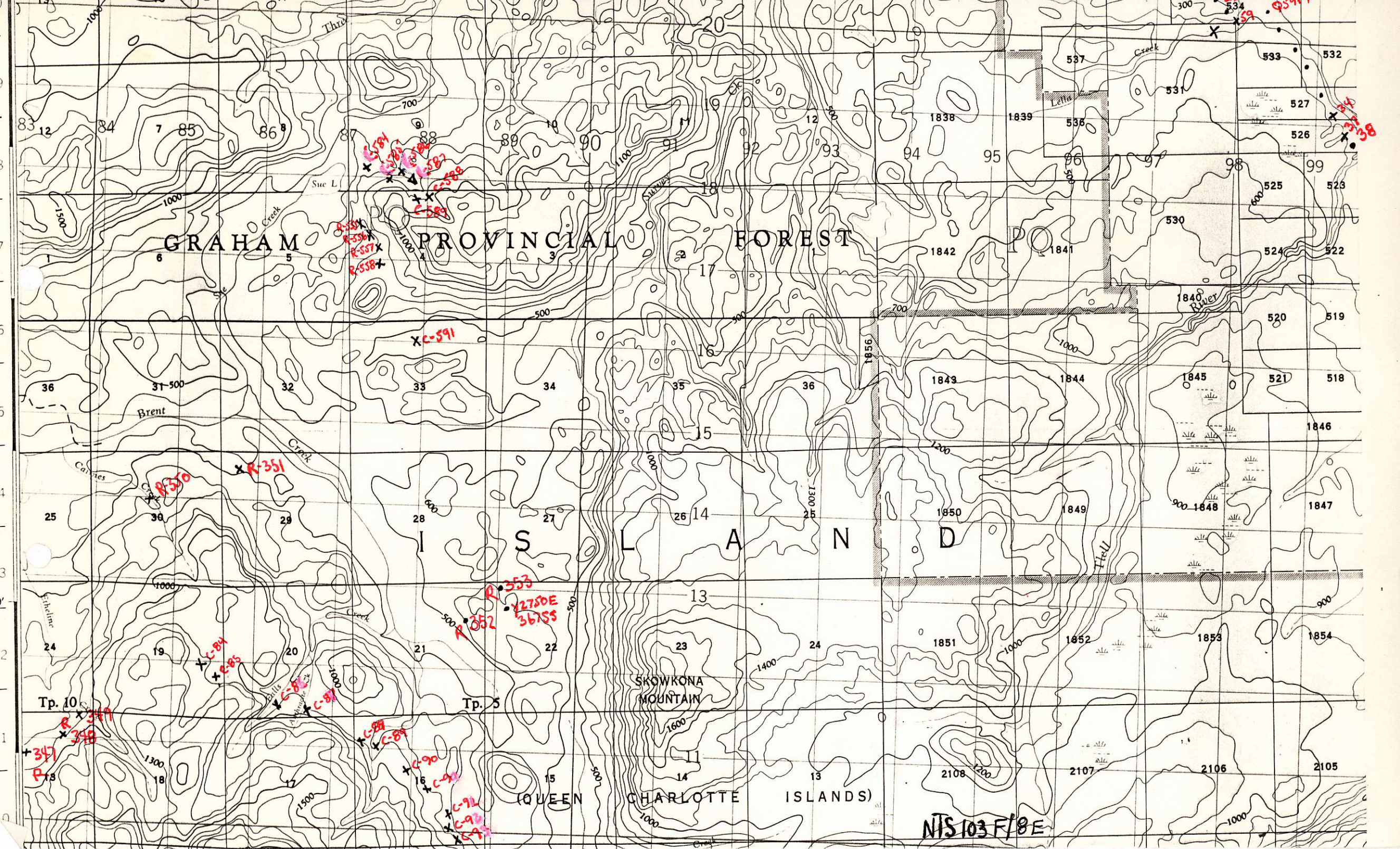
Ces cartes sont en vente au Bureau de distribution  
 du ministère des Mines et des Relevés techniques, Ottawa.

NTS 103 F/8 E

GRAHAM

PROVINCIAL FOREST

PO



NIS 103 F/8 E



Av PPB

GRAHAM PROVINCIAL FOREST

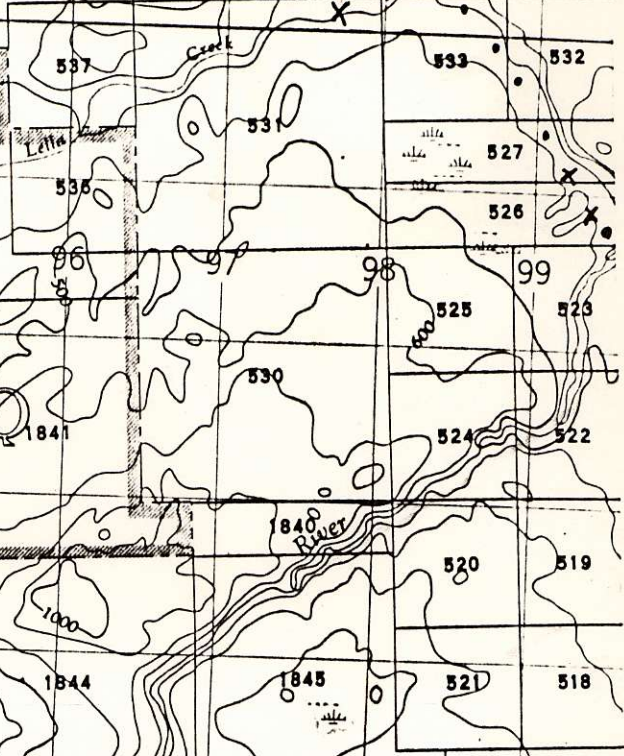
Tp. 10

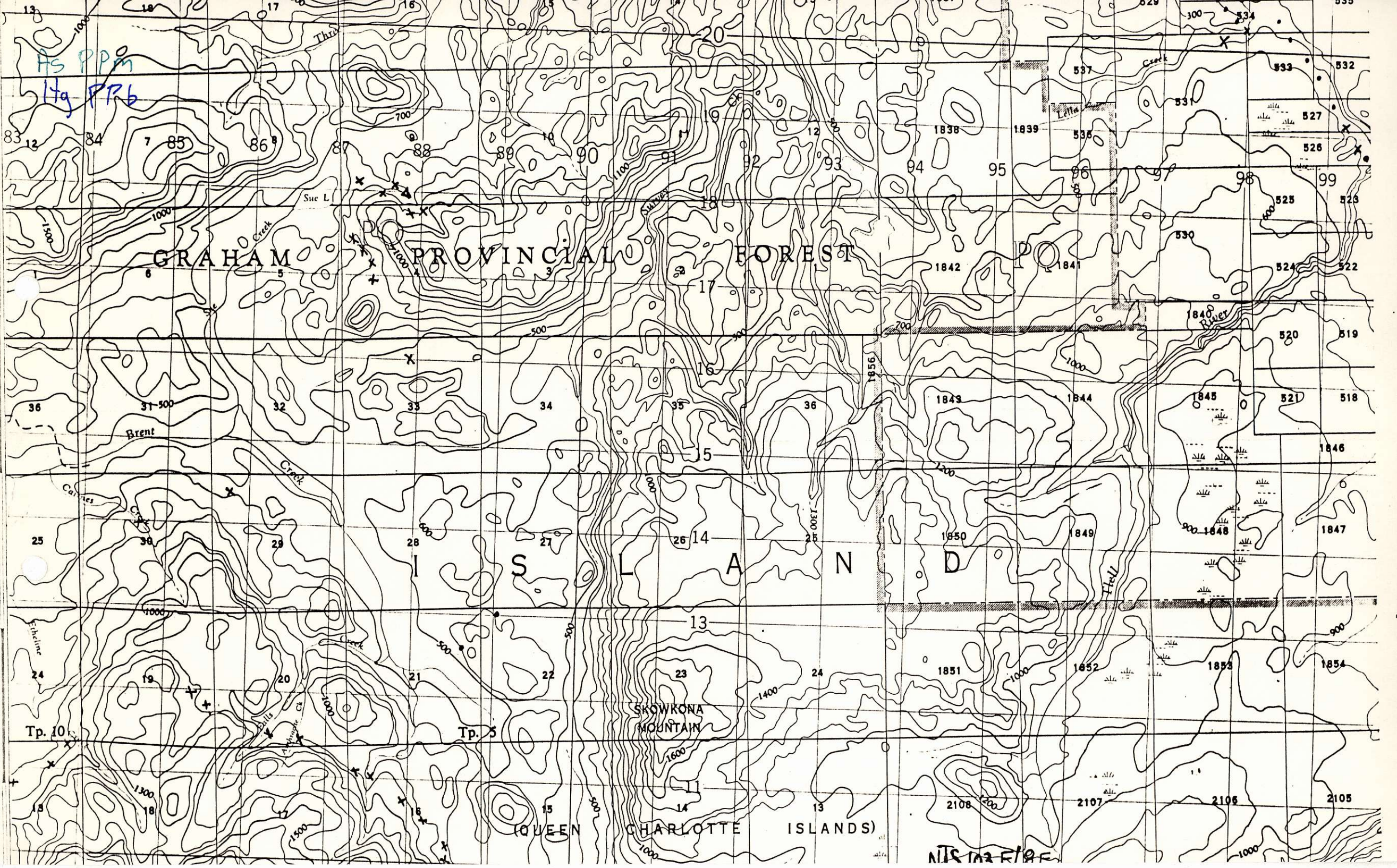
Tp. 5

SKORONA MOUNTAIN

QUEEN CHARLOTTE ISLANDS)

NTS 103 R 10 E





Hs PPM  
Htg PRb

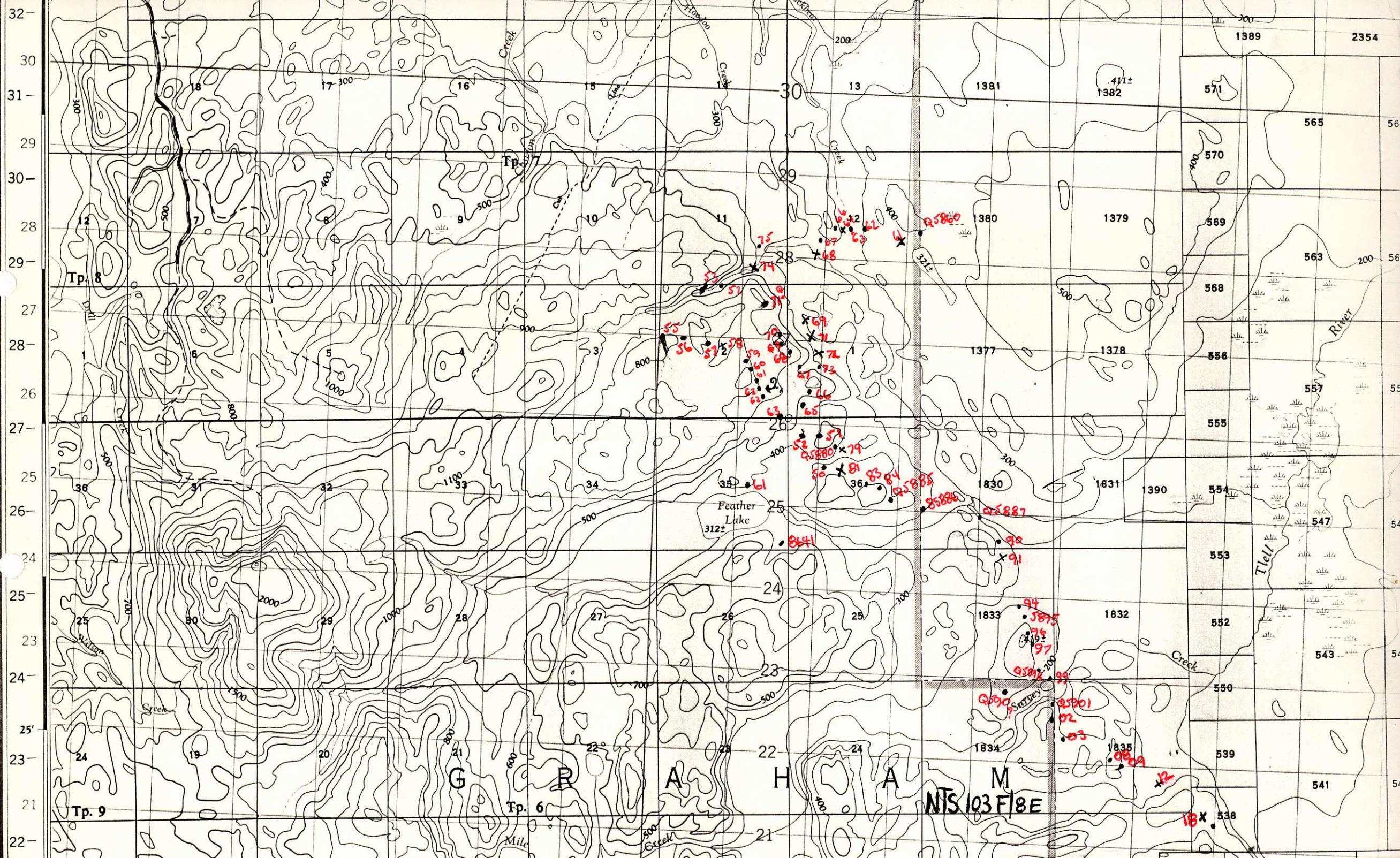
# GRAHAM PROVINCIAL FOREST

SKOWRONA MOUNTAIN

QUEEN CHARLOTTE ISLANDS

NISKANEN





32-  
30-  
31-  
29-  
30-  
28-  
29-  
27-  
28-  
26-  
27-  
25-  
26-  
24-  
25-  
23-  
24-  
25-  
23-  
21-  
22-

*Handwritten:* Au PR6

*Printed:* Tp. 8

*Printed:* Tp. 9

*Printed:* Tp. 6

*Printed:* NTS 103 F/8 E

*Printed:* G

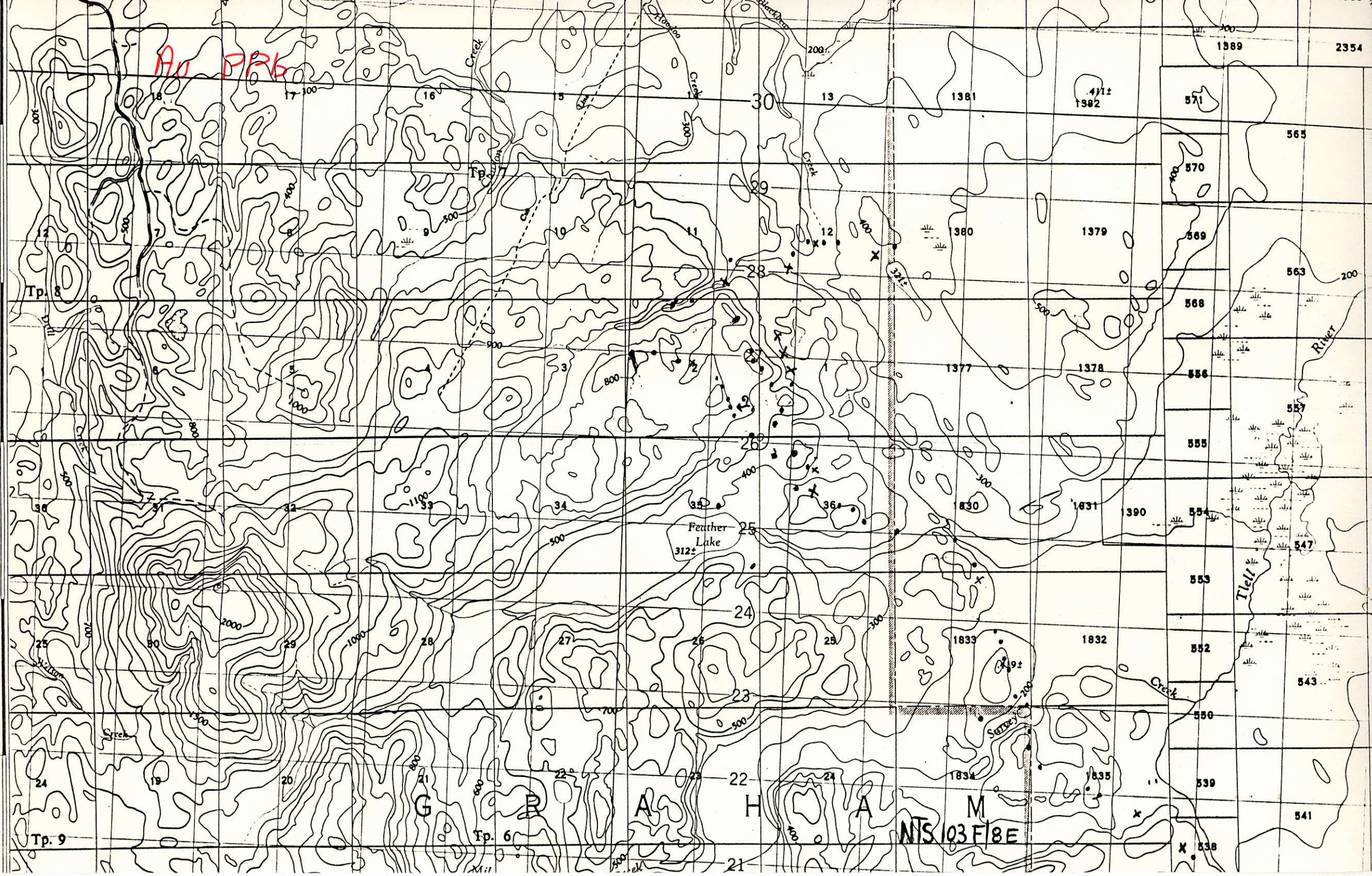
*Printed:* R

*Printed:* A

*Printed:* H

*Printed:* A

*Printed:* M



*Printed:* Feather Lake  
312'

*Printed:* Tlell Creek

*Printed:* River

*Printed:* 1889

*Printed:* 2354

*Printed:* 4712  
1382

*Printed:* 571

*Printed:* 565

*Printed:* 570

*Printed:* 1379

*Printed:* 569

*Printed:* 563

*Printed:* 568

*Printed:* 1377

*Printed:* 1378

*Printed:* 566

*Printed:* 557

*Printed:* 565

*Printed:* 554

*Printed:* 547

*Printed:* 563

*Printed:* 1831

*Printed:* 390

*Printed:* 554

*Printed:* 543

*Printed:* 550

*Printed:* 1833

*Printed:* 1832

*Printed:* 552

*Printed:* 1834

*Printed:* 1835

*Printed:* 539

*Printed:* 541

*Printed:* 538



32-  
30-  
31-  
29-  
30-  
28-  
29-  
27-  
28-  
26-  
27-  
25-  
26-  
24-  
25-  
23-  
24-  
25-  
23-  
21-  
22-

*H<sub>2</sub>O - PPM*  
*As - PPM*

Tp. 8

Tp. 9

Tp. 6

G

R

A

H

A

M

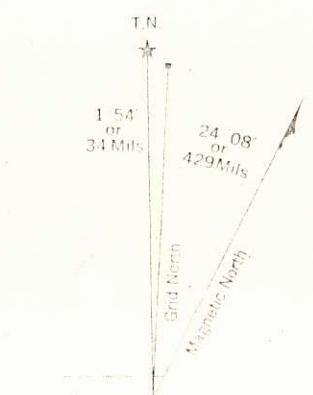
NTS 103 F/8 E

Feather Lake  
3125

Tlell Creek

Creek



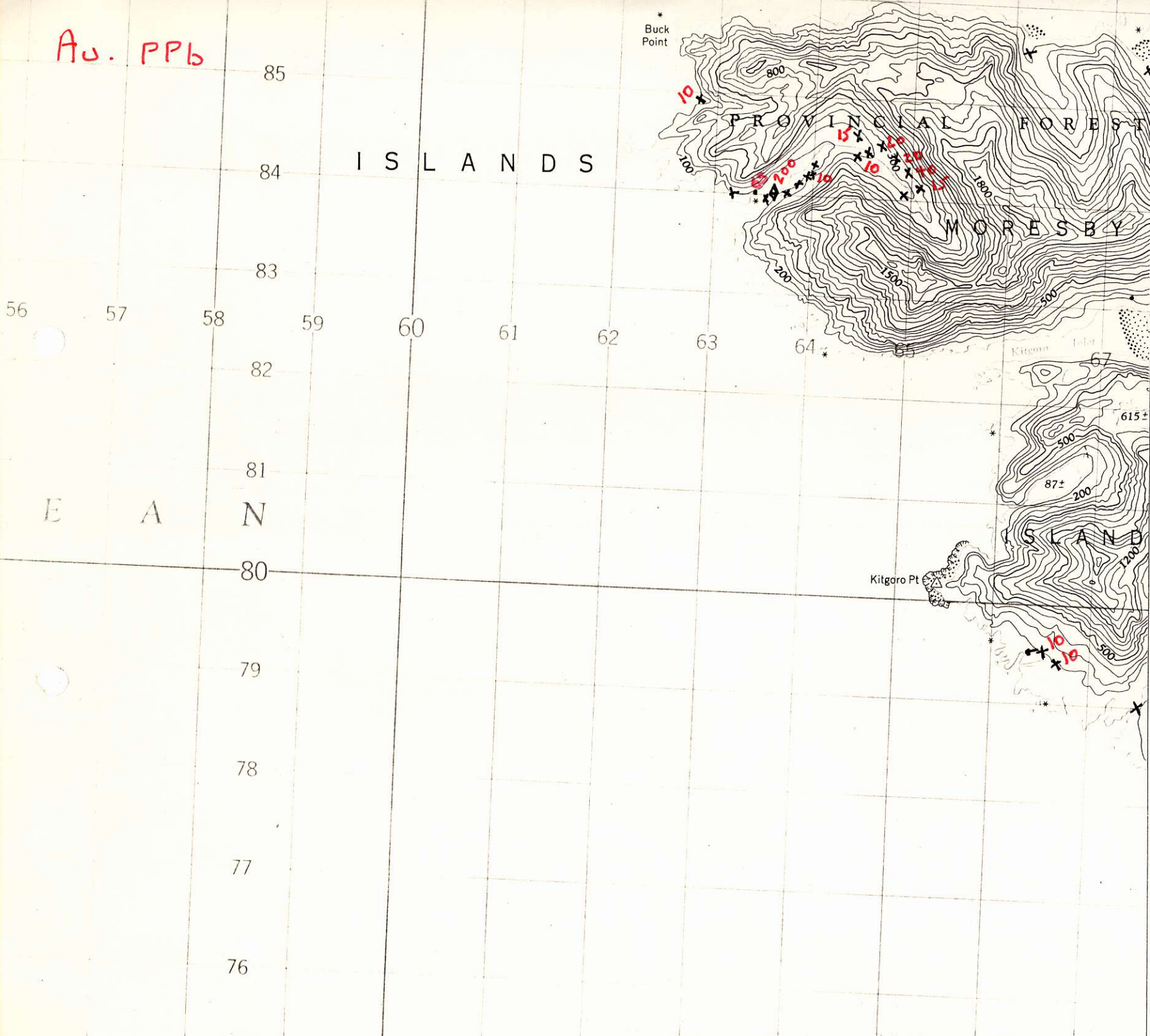


Use diagram only to obtain numerical values.  
 APPROXIMATE MEAN DECLINATION 1965  
 FOR CENTRE OF MAP  
 Annual change decreasing 2.8'

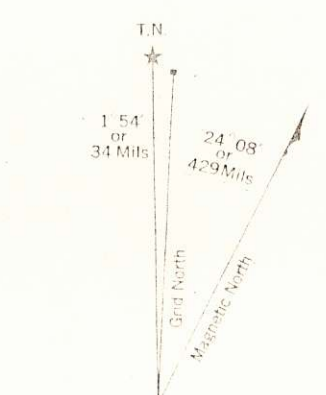
GRID ZONE DESIGNATION	8U	QUAD IDENTIFICATION	PG PP	59
TO GET A READING IN METRES 1 000 METRES				
EASTING	61			
NORTHING	91			
EASTING METRES				
61	5			
615				
NORTHING METRES				
91	7			
917				
EASTING GRID REFERENCE				
615917				

NTS 103 F2E  
 ONE THOUSAND METRE

AU. PPb



86  
85  
05'  
84  
83  
82  
81  
80  
79  
78  
77  
76



Use diagram only to obtain numerical values  
APPROXIMATE MEAN DECLINATION 1965  
FOR CENTRE OF MAP  
Annual change decreasing 2.8'

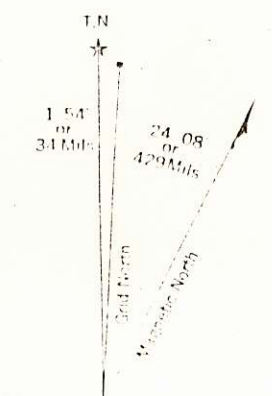
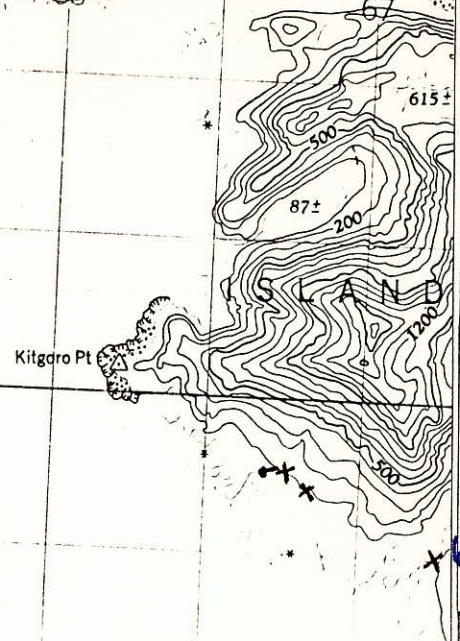
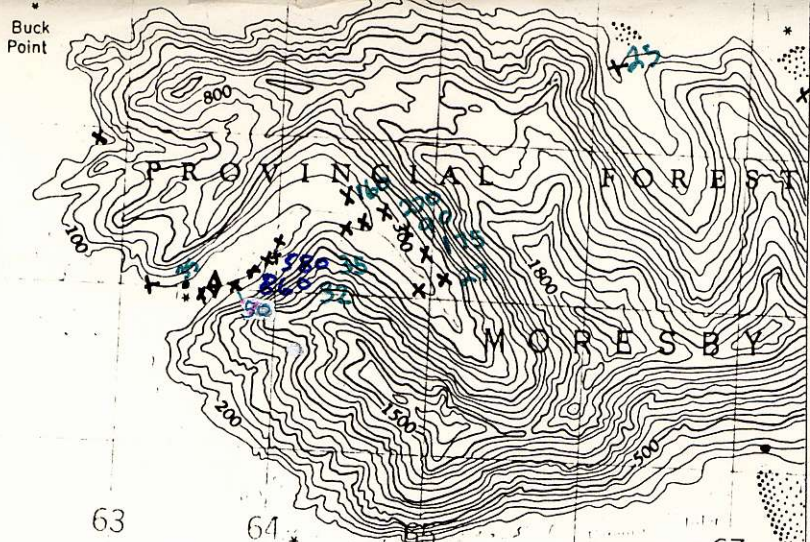
GRID ZONE DESIGNATION	8U				
NORTHING SQUARE IDENTIFICATION	<table border="1"> <tr> <td>PO</td> <td>59</td> </tr> <tr> <td>PP</td> <td></td> </tr> </table>	PO	59	PP	
PO	59				
PP					
TO OBTAIN A REFERENCE TO SQUARE IN METRES					
EXAMPLE	LIGHTHOUSE				
EASTING: Read number on grid immediately above point	61				
Estimate tenth of a grid square from the line adjacent to point	5				
	615				
NORTHING: Read number on grid immediately above point	91				
Estimate tenth of a grid square from the line adjacent to point	7				
	917				
MILITARY GRID REFERENCE	615917				

NTS 103 F/2 E  
ONE THOUSAND METRE

As 25+PPM  
Hg PPb

85  
84  
83  
82  
81  
80  
79  
78  
77  
76

I S L A N D S



Use diagram only to obtain numerical values.  
APPROXIMATE MEAN DECLINATION 1955  
FOR CENTRE OF MAP  
Annual change decreasing 2.8'

MAGNETIC DECLINATION	
GRID ZONE	8U
MEASUREMENT	59
MAGNETIC DECLINATION	
DATE OF MEASUREMENT	61
MEASUREMENT	5
MEASUREMENT	615
MEASUREMENT	91
MEASUREMENT	7
MEASUREMENT	917
MEASUREMENT	615917

NTS 103 F/2 E  
ONE THOUSAND METRE