

COURTE FILL-IN

1981

841945

8W 3N to 16N (v-steep across Needles).

section of road ~ 600m long. 100m spacing.

10W 3N to 16N

12W 6N to 14N  
~(road)

14W 8W to 14N.  
~(road)

SANDY

19 Sep prep

prep

INSTR  
TOSM

3 Sept 81

Rationale

120 Au ~ 12W 12N & sev. other anom Au in ck here.

20 Au ~ 6 & 9 N on 8W

Drill hole: tie in ~ 13W 9+50W. Why no Au

Is alt<sup>2</sup> restricted to NE ck. jig  
Needles 14W 8W

32

16

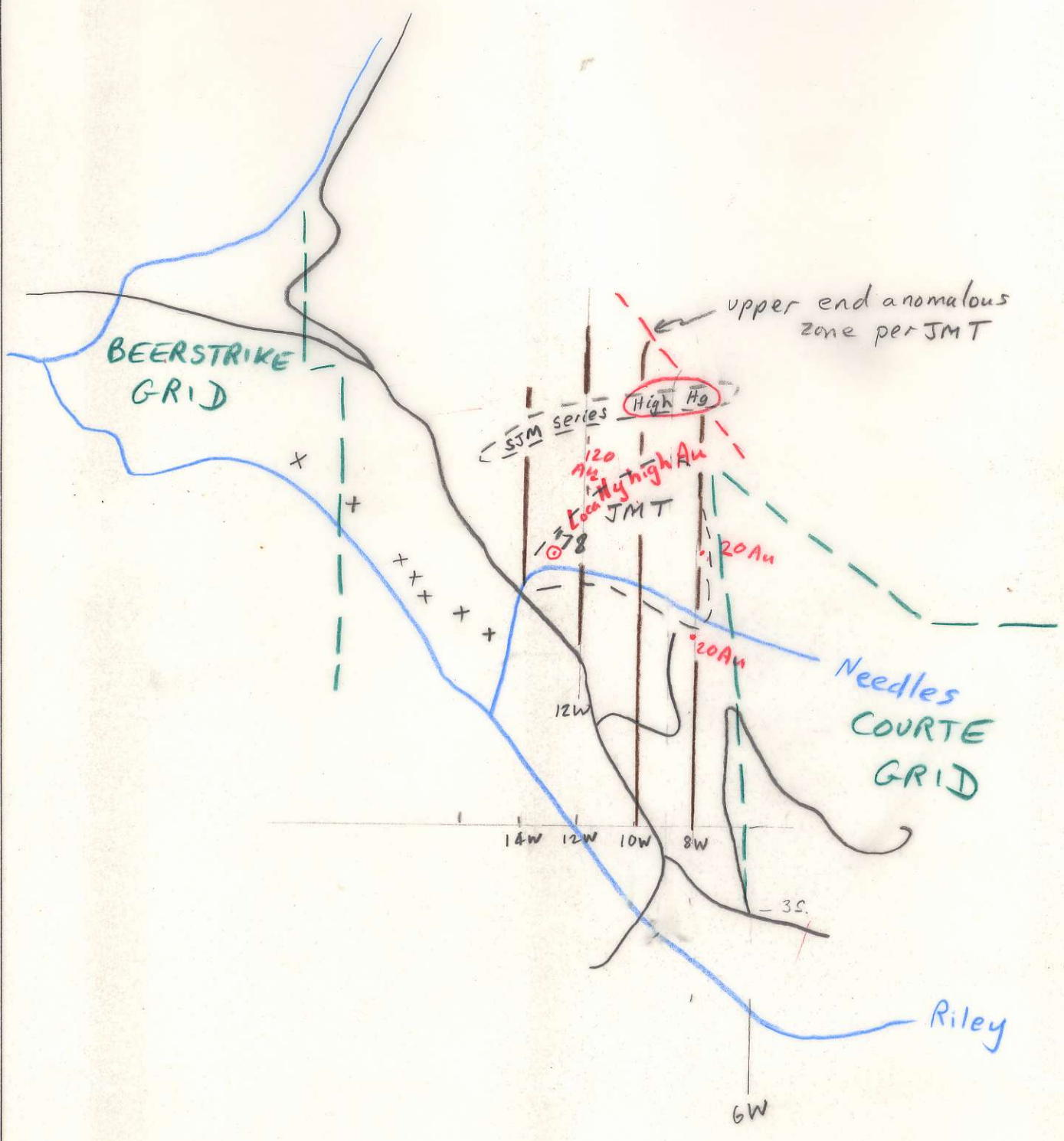
4.8 km

2 k/day, 2 days

W 09299911 ATTITUDES (100/40 N)

|         |                          |       |            |    |          |
|---------|--------------------------|-------|------------|----|----------|
| Project | NTS                      | Scale | Page       | of | Traverse |
| Sampler | Location, Target (words) |       | Sample Nos |    |          |
| Date    | photo no.                |       | Cert. Nos  |    |          |

- W 09299911 ATTITUDES (100/40 N)
- SANDSTONE SILTSTONE
- CONGLOMERATE
- VOLCANIC
- SPECIMEN SITE A.B...; DO NOT WRITE ON OTHER SIDE OR USE COLOURS
- CHERT
- SHALE
- ROCK
- LIMESTONE DOLOMITE
- INTRUSIVE
- GOSSAN MINERALS
- SHALE PAN Δ WATER O
- SILT X SOIL ●
- DO NOT FORGET CONTOURS, DRAINAGE, NORTH ARROW, LAT/LONG, SAMPLE SITES, WORKINGS, TRAILS, GOSSANS, OBSERVED GEOLOGY: DEFINED — INFERRED - - - ASSUMED.....

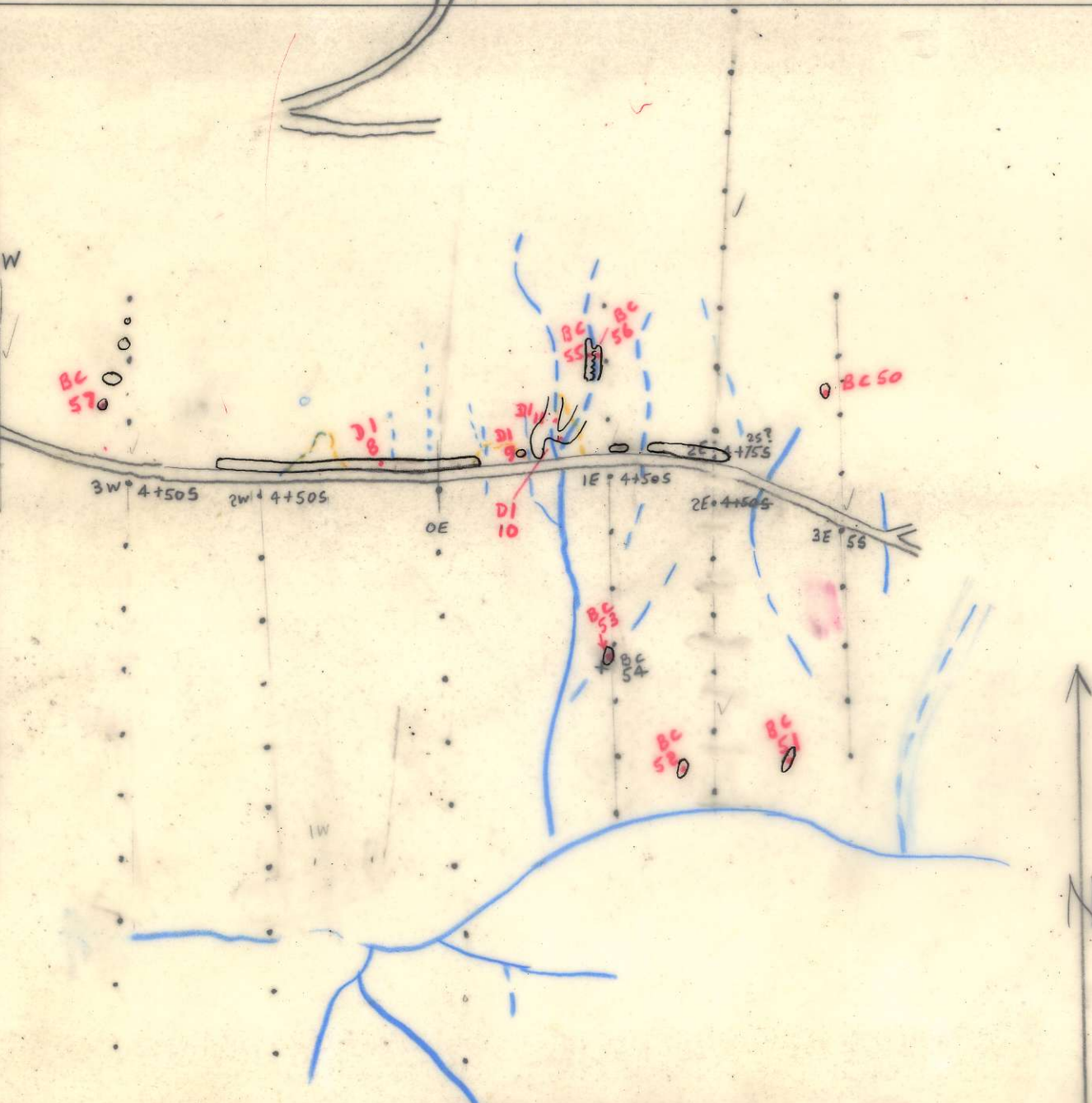


GEOCHEM: Cu Mo Pb Zn U W ASSAY:

DON'T FORGET CONTOURS, DRAINAGE, NORTH ARROW, LAT/LONG, SAMPLE SITES, WORKINGS, TRAILS, GOSSANS, OBSERVED GEOLOGY: DEFINED — INFERRED --- ASSUMED.....

DON'T FORGET CONTOURS, DRAINAGE, NORTH ARROW, LAT/LONG, SAMPLE SITES, WORKINGS, TRAILS, GOSSANS, OBSERVED GEOLOGY: DEFINED — INFERRED --- ASSUMED.....

CHEVRON MINERAL SERVICES DAILY TRAVERSE REPORT



GEOCHEM: Cu Mo Pb Zn U W ASSAY:

GEOCHEM: Cu Mo Pb Zn U W ASSAY:

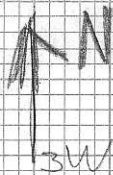
COURTE  
 FINAL BEST PLOT  
 EXCEPT FOR  
 1W LINE ??

| Project | Project | NTS                       | NTS                       | Scale   | Scale   | Page       | Page       | of Traverse | Traverse |
|---------|---------|---------------------------|---------------------------|---------|---------|------------|------------|-------------|----------|
| Date    | Date    | Location, Target, (words) | Location, Target, (words) | (words) | (words) | Sample Nos | Sample Nos |             |          |
| Date    | Date    | photo no, photo no.       | photo no, photo no.       |         |         | Cert. Nos  | Cert. Nos  |             |          |

Replace x's  
with dot &  
square for  
rock geochem

AS  
ON  
FIELD  
MAPS





C-B

~~SW~~  
 COURTE

1W

3S



4+50

5

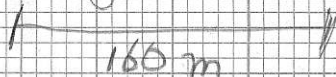
← ERROR - HIC  
 DE 5S at flag  
 WIR

6  
 12.5m : 3W 7+50 S

to 2W || || ||

7  
 3.5m from 2W

7+50 flag



160m

??

~~SW~~  
~~SOTS~~

1W

7+50s - Brown-grey soil  
+ clay + large orange  
tools

7 - Grey + bright  
orange

6+50 - Clay, grey, + orange

6 - Grey clay + orange

5+50 - Grey-black soil

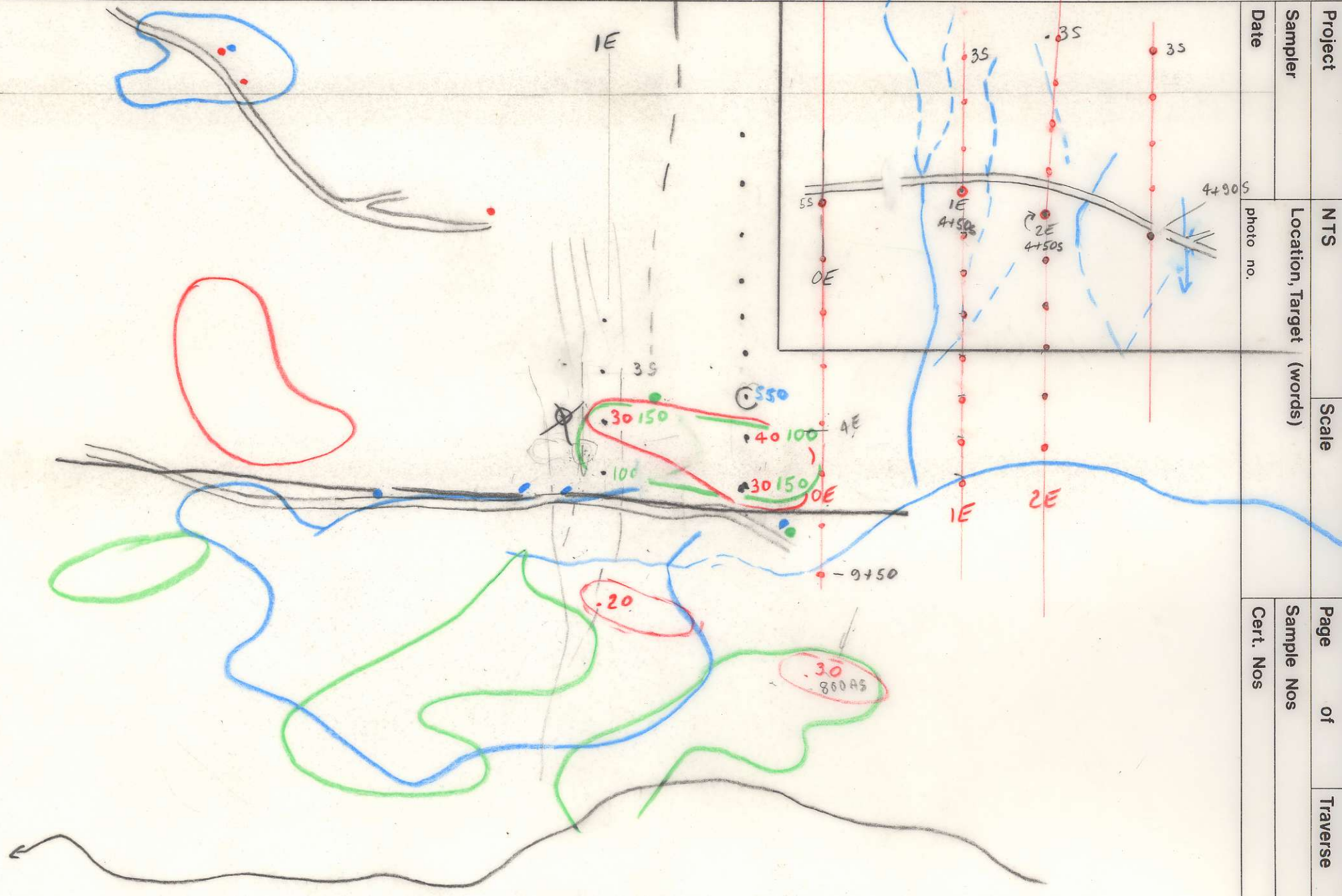
5 - Silt, from stream,  
sandy brown

GOSSAN, MINERALS [Pattern] INTRUSIVE [Pattern] LIMESTONE DOLOMITE [Pattern] SHALE [Pattern] CHERT [Pattern]  
 SILT X SOIL ● ROCK ■ PAN △ WATER ○

VOLCANIC [Pattern] CONGLOMERATE [Pattern] SANDSTONE SILTSTONE [Pattern]  
 SPECIMEN SITE A,B,...; DO NOT WRITE ON OTHER SIDE OR USE COLOURS

DON'T FORGET CONTOURS, DRAINAGE, NORTH ARROW, LAT/LONG, SAMPLE SITES, WORKINGS, TRAILS, GOSSANS, OBSERVED GEOLOGY: DEFINED — INFERRED--- ASSUMED.....

|         |                          |       |            |    |          |
|---------|--------------------------|-------|------------|----|----------|
| Project | NTS                      | Scale | Page       | of | Traverse |
| Sampler | Location, Target (words) |       | Sample Nos |    |          |
| Date    | photo no.                |       | Cert. Nos  |    |          |



CHEVRON MINERALS — DAILY TRAVERSE REPORT