

Sept 9/81

SM

①

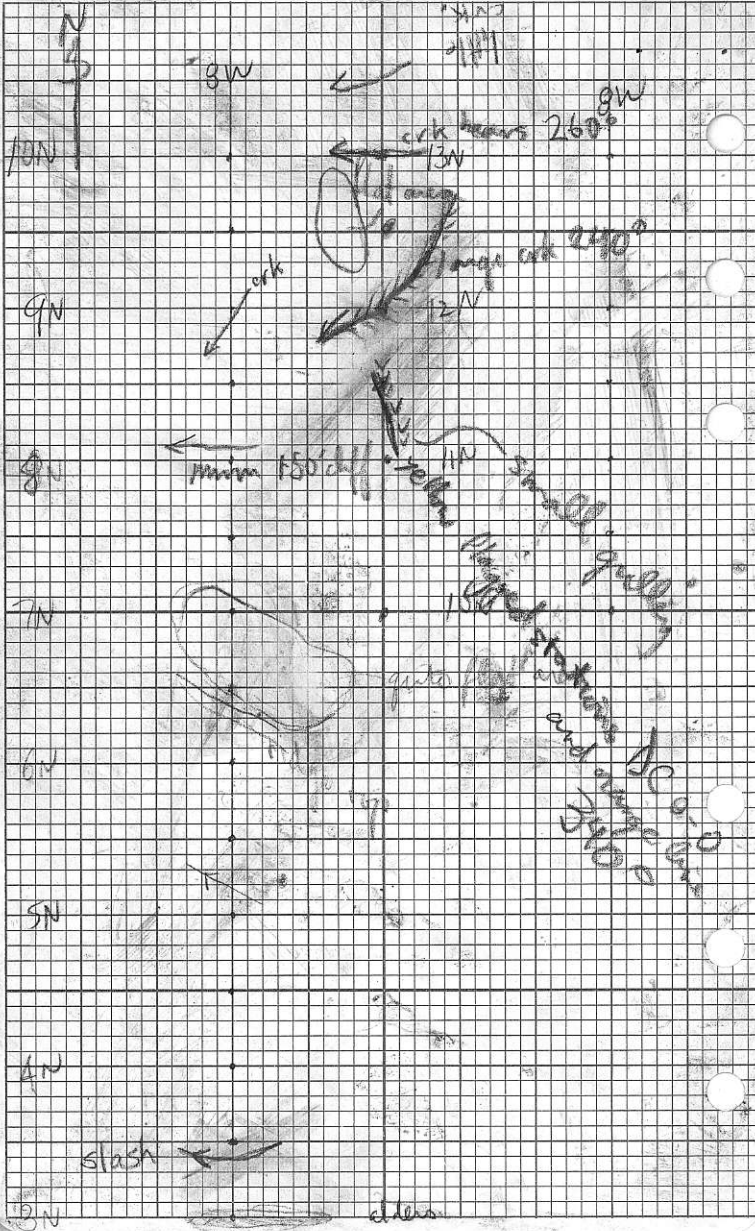
Conste

8W 3N → 16N

BC fSM

841944

KC-SM 346



10N

9N

8N

7N

6N

5N

4N

3N

3W

4W  
11W

9W

crk bears 260°

13N

crk

12N

11N

min 150' dist

smaller quarry  
end of road

slash

chess

Sept 9/81

SM (4)

3N 510' dur  
M outside brown silty  
sandy 10% pebbles B

3+50N 490' red orange silty sand  
10% pebbles B

4N 540' tan-grey clay with  
10% pebble B

4+50N 540' black organic A

5N 560' tan clay

5+50N 540' orange sand

6N 610' more orange sand  
no organics no clay

6+50N 660' tan, orange grey clay w/ blk  
organic 12.5% clay  
10-15% pebbles 10% org

7N 640' grey dk & lt. w/ red rusty specks  
70-80% clay

7+50N  
yellow slight clay sand  
15% clay 5% organic 5% pebbles



15 N

14 N

Sept 9/91

SM (3)

13N 920' dk tan Rhy decay  
white pebbles 20% no org.  
10% clay

13.50N 1000' brn w/ 30% pebbles  
20% org 5-10% clay

14N 1040' as above

14.50N 80' blk organic w/ white sand  
in it spindly for sample

15 N 1120' as above

15.50N leached white spongy  
\* asbestos lensed

16 N

Sept 9/81 SM

③

- 8N 390' <sup>clay</sup> very pebbly and very organic perhaps 10% sand from slide bottom and silt.
- 8+50N 450' equal parts sand, clay, org. pebb. scraped from bed rock at 6" deep
- 9N 550' as above generally red in colour however (10) quite rusty, perhaps less clay
- 9+50N 650' Red soil 20% clay 15% pebbles no org. fish 8' deep
- 10N 700' dark tan very fine silt no org. not much clay 5%? from 8" deep
- 10+50N 740' as above more sand in with silt and 10-15% clay
- 11N 790' orange silty sand w/ 15% clay from 15" deep good sampled
- 11+50N 850' tan coloured 25% clay 10% pebbles rest sand + silt from 10" deep
- 12N 850' orange and white (10) decayed klyptite Rusty and 25% pebbles no org, 10% clay
- 12+50N 900' orange rusty silt excellent sample.

Counts

T. slow

10/9/81

12 west  
line

Sept. 10, 1981

Conte claims

U 12 W 14 to 6 N ± ?

map @ 1:50000 soil sample

@ 50 m interval

A day when only fools will  
be outside (except for today)

1200 hrs. Yel-br. cs-fn sa clay rock

B Soil

ang float yel weathering  
leucocratic Rhyolite (fine-grained)  
yel-white

1350m yel-br clay, sticky

1300m ditto above

of Gabbro phenitic 2-4mm (fine-grained)

porphyritic andesite dydrite or dacite

white feldspar euh laths to 3mm (chertic)

weathers white-grey to 8mm

1500 feldspar 2-4mm

2-4% hblnd

groundmass 0.5mm -

- may be tuffaceous

81-KC-70-16 NS

+1250m yel-br sa loam + clay

+1210m Blue md hard fine-grained

Rhy-basite tuff + Rhy. Fg

to 1 cm < 5%  
to 1 cm < 5%

R. D. PENHALL LTD. MADE IN VANCOUVER, CANADA  
DURABLE WATERPROOF

METRIC  
FIELD (S)



1400n

1300n

1200n

1100n

1000n

900n

800n

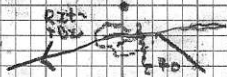
700n



50m

R-D (279)  
20-16 15

Rt + Rfg + Tr Py



C-7A  
gossan  
Rth  
Rfg  
C70

Limit of Logging

Nettles ck



ground mass = .5mm  
white feldspars; ~~each~~ to 4mm 50%  
(these may be alteration features)  
fg of grey Rhy to + 1cm 50%  
minor interstitial py  
weathered yellowish brown

1200m Gy br Sa loam + clay  
+1189m ck o/c -lt

Grey Rhyolite at s/a previous description  
± fg of Rhy to 25+cm  
Alt in ck, Rock very soft

Locally totally altered to white seric clay  
fault ~ argillitic 180/75 E

Local white → Gy 1-3mm  
Rxt ~ gradational into lt  
poor exposure

1100m Gy clay  
1100m ~ ditto

1050m Gel Sa loam

1025m Bossan in Rhy in ck

Sample C-719,  
Pyritic Bossan in strongly Ser  
Rhy Sample 81-KC-70-17 x 1.0m  
py to 1.2m in stringers - minor  
qtz ~ See detail

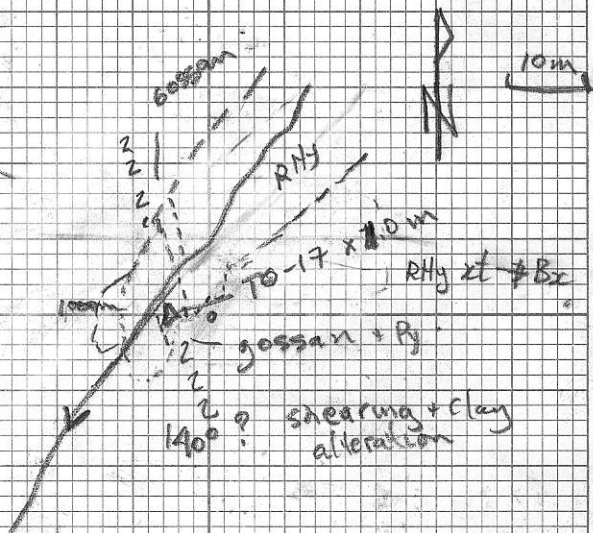
+1000m Gel-br Sa loam

+950m ~ ditto ~

+900m Br Sa loam

+850m Gel-br Sa clay

600 n



+800m	yel-br loam + org
+750m	gy sa clay
+700m	yel-br sa loam
+695m	<u>road BOL</u>

Sept 10/81

BC

line BW - 8N  $\Rightarrow$  16N

Counta Grid

Wednes Sept 9<sup>th</sup>

BC - S.M.

SW on Court Claim Grid from 3N to 16N

① Andesite tuff w/ tuff breccia at bottom and slickensides in an approx SE-NW trend there is local (c) patches of mod-h heavy and chlor alteration prod at the bottom the fragments are up to 3 or 4 cm in dia in a fine grained matrix. There are also patches of ~~porphyritic~~ chert that have silica and thin thin chlorite rims (chert looks like boulders in places locally sized tuff in float as well as diorite (usually chlor altered m)) Other than the slickensides at the south end there is only w. part. no mat.

② Andesite tuff 1 mm fragments are largest (c) quite fine grained and more even in texture than ①. Keratite is not present at all and chlorite is at least mod through out and in places heavy (c) as a coating up to 1 mm thick there are also what I would be feldspar weathered to a white powder in specks through out fragmenting as in to heavy. no mat.

③ Andesite (6-8?) w/ mod-h silicification  
L to mod. definite needle-like feldspar  
Grack. weak chlor  
KC-BC-112  
③ porphyritic

PHO. PENHALL LTD. MADE IN VANCOUVER, CANADA  
DURABLE WATERPROOF

METRIC  
FIELD (S)



①

11

10

100 m

9

0

Cliff face

③

8

Re B-112

7

6

②

5

④

4

3N

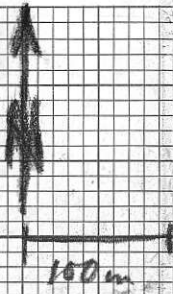
(4) KC-BC-113 very small very rusty  
possibly flow banded Rhy / heavily  
weathered as well.

(5) KC-BC-114 as above  
obviously flow banded

(6) A? lapilli tuff w/ slight  
yellow stain on it



8N



-16 N -



15 N -

14 N -

13 N -



⑤

12 -

HW		CLAY	SAND	GRAV	ORG	COLOR
14W	11	40	30	10	20	BROWN GRAY
13W	12	40	30	10	20	GRAY
13W	12	25	30	30	15	RED
13	5	30	25	25	20	RED GRAY
12W	6	10	40	25	25	Brown
12	8	15	35	30	20	RED
11W	5	30	45	20	5	RED GRAY
11	9	15	45	20	20	Brown
10W	6	15	30	35	25	RED

10

9W

9

8W

8

SEPT-10/81

San Francisco

14W line

COURT

Finished at 10-50 N

11N

12N

CR → 223°

CR → 280°

13N

CR → 218°

CR → 228°

14N

CR → 228°

SEPT 10/81  
San Francisco

Courte

T. Riv

9/9/81

10 W line

Sept 9, 1981

Courte Claims

T. Oliver

D. Francis

• = soil sample

Sampling and mapping  
of the 10<sup>u</sup> line, to north  
samples every 50 m

+300m station 10m E of road

+350m no ole

+400m no ole available

numerous snags to catch ones feet  
upon small mostly spruce trees  
with needle like bases.

+450m no out crop thus far

+687m angular float  
grey-brown weathering

by blue md hard, .5 → 2.5 cm

lapilli <sup>with</sup> containing ang fg of  
grey hydrite? (tr py)

ground mass clw stle fg to 2mm

to dissem py milky blue stains  
weathered surface, shows numerous  
clasts

+694m Small ole approx  
s/a above description

+750m, in this area

scattered small ole s/a above

but groundmass, more toward

aphanite & chloritic md to soft

locally rusty weathering

81-kc-10-10 Hand specimen

1600

CANYON

BDL  
Andesite  
Flows??

1500

1400



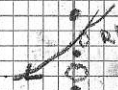
1300



see sketch

scattered of Rhy

1200



Rhyolite

1100

1000



TWT altered



Felsite

900



APY felsite HS-700g

CANYON



strong alt. rhyolite  
BHK-70-11 HS-12  
Tr PY

800

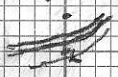


scattered  
of

small  
rhyolite  
flows  
spaced

700

D-R → Lupilli  
tuff

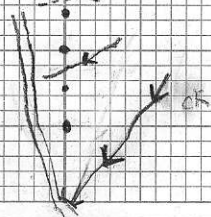


600

500

400

300 N



1-3 mm milky white to slightly ~~orange~~ <sup>pinkish</sup>  
Feldspar zills + fg

+ 895m o/c in ck. Hand specimen  
RL-KC-TO-11 PL 12 HS

Blue-white md grained 2-4 mm

Soft sericitic altered rock

+ tr py

Much alteration, pervasive

qltz. 0.2 even + 1mm

ghostly feldspars, locally  
chloritic halos

Rock may be a foppy, hard to say  
RL-TO-11 x 0.4m

Shearing seems to trend @  
090°, highly fractured.

Some small art. veinlets

+ 923m o/c Grey weathering, md hand

md grained, porphyritic felsite

Probably a rhyolite

milky feldspars ~ to 4mm zof

ground mass ~ 0.5mm granular

textured (almost aphanitic)

contains no <sup>visible</sup> mafic minerals

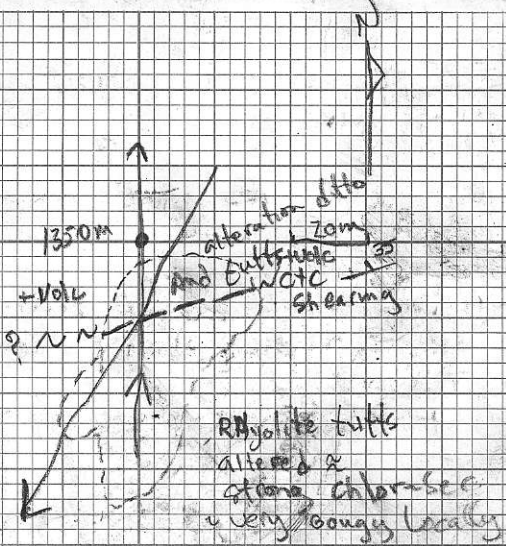
HS RL-TO-13

+ 940m o/c s/a ↑

+ 960m o/c s/a

+ 990m o/c Granodioritic rock

monzonite ??





+1040 m RC 81-KC-TO-14

+ tuffaceous Rocks?

silicified + minor py

milky blue, ~~soot~~ <sup>soot</sup>, sericitic

rocks + small setz veinlets,

olc in small, etc

sample C 1086

+1137m o/c white Rhyolite

81-KC-TO-15 HS

@ 1164m o/c white Rhyolite

↓ sample LCO29

Rusty weathering

+ 1550 m BOL Humongous big  
canyon

10W

	CLAY	SAND	GRAV	ORG	COLOUR
3/6	20	40	25	15	Orange
31504	40	30	20	10	GRAY RUST
4 7	35	20	20	20	ORANGE
4508	35	20	15	25	ORANGE
5 6	45	25	10	20	ORANGE gray
51507	30	25	35	10	Gray
6 9	10	35	35	20	RED
61505	40	35	5	20	RUST gray
7 4	10	45	30	15	RED
71508	40	35	10	15	BAIGE RUST
8 10	45	30		25	RED
81506	20	45	15	20	Orange
9 5	10	45	45		BAIGE
91508		40	40	20	RED
10 5	5	45	30	20	ORANGE
101506	10	50	20	20	ORANGE
11 7	15	20	30	35	Gray
111508	40	40	5	15	BAIGE
12 10	30	35	20	15	Orange
121508	40	40	5	15	RED
13 6	50	30	10	15	GRAY
131509	30	40	20	10	BROWN
14 11	45	30	10	15	BROWN
14150	55	30	10	5	GRAY

	CLAY	SAND	GRAVEL	ORG	Color
15	25	30	20	25	Brown
15:50	35	30	10	25	RED Grey
16					

SEPT 9/81

San Francisco

Courte

for map see

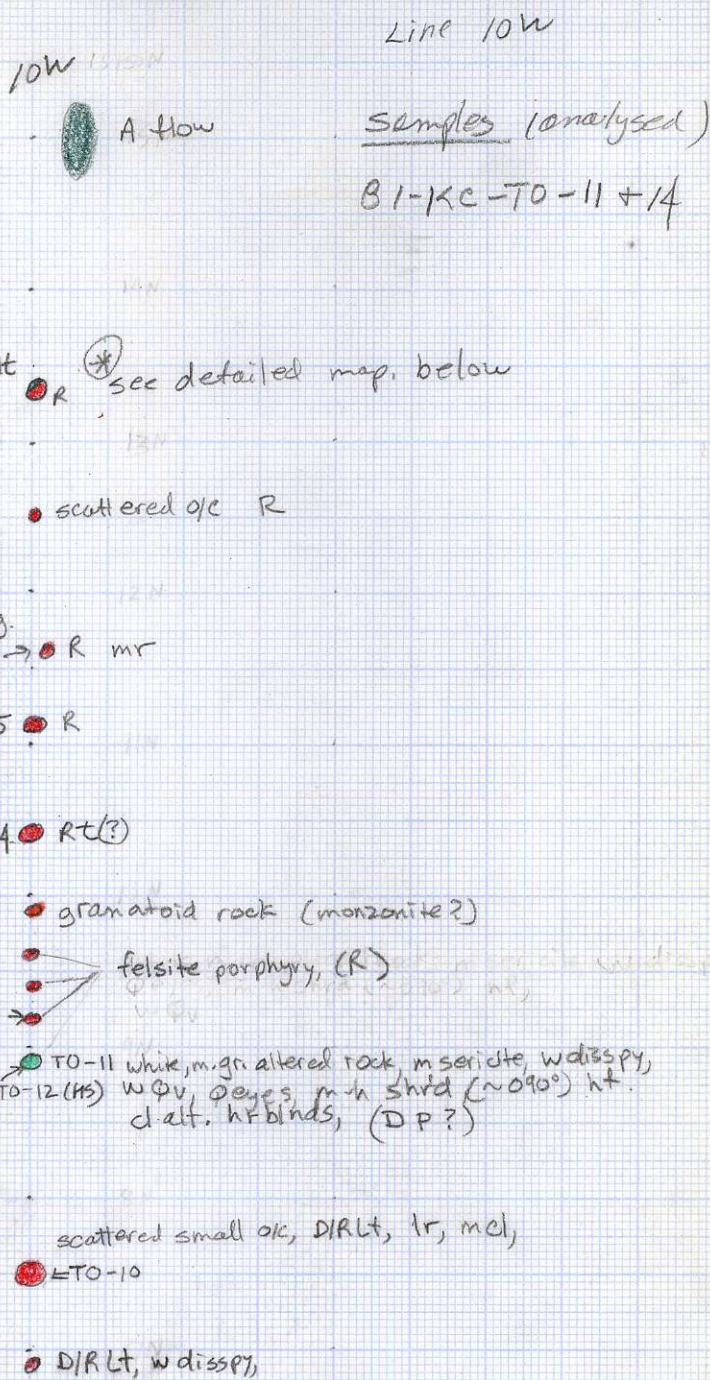
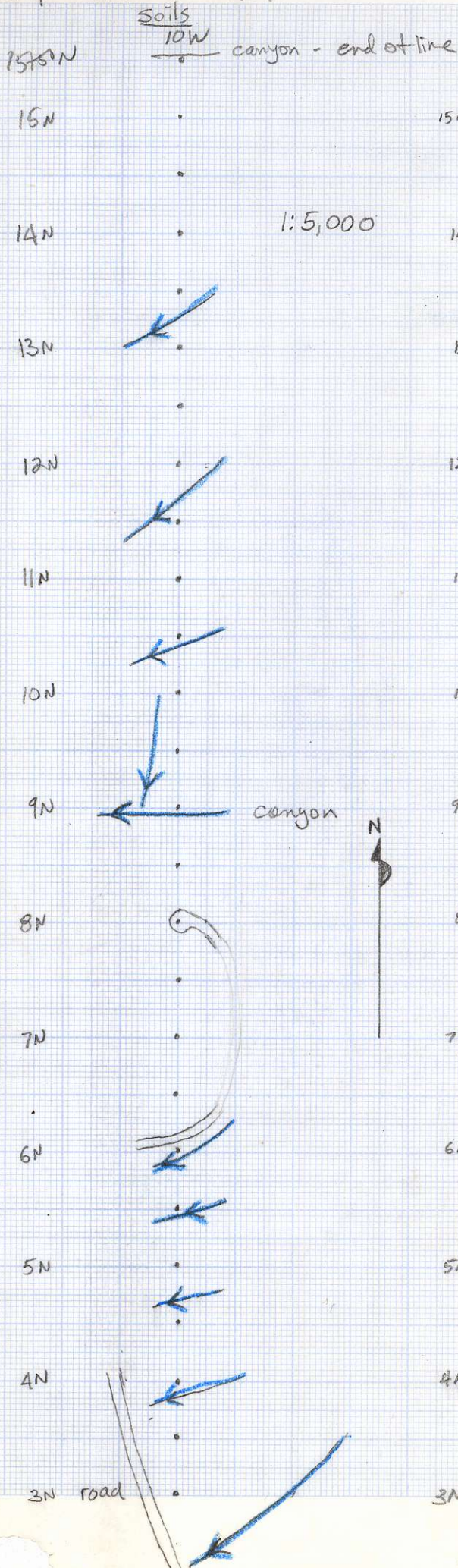
T.O. Sept 9/81

note 10W line

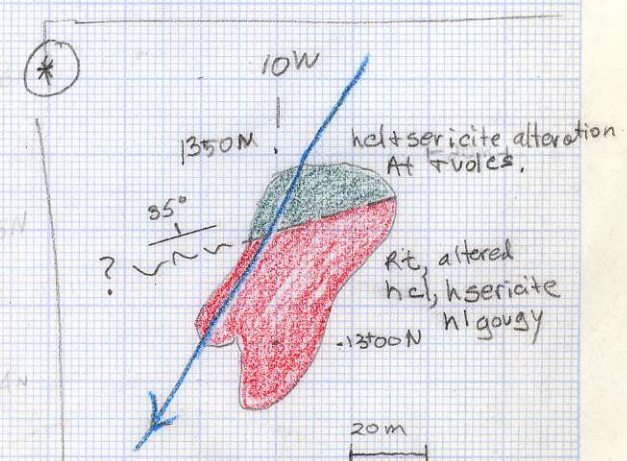
Sept. 9/81 TO. + D.F.

Geology

cont'd Grid



Samples (analysed)  
B1-KC-TO-11 + 14

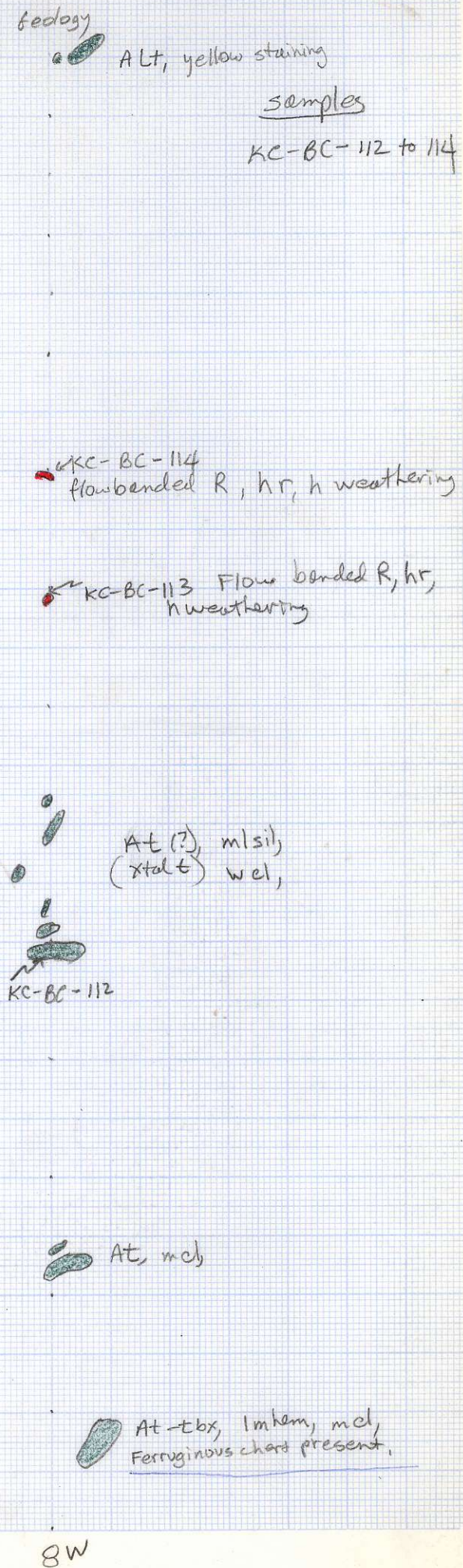
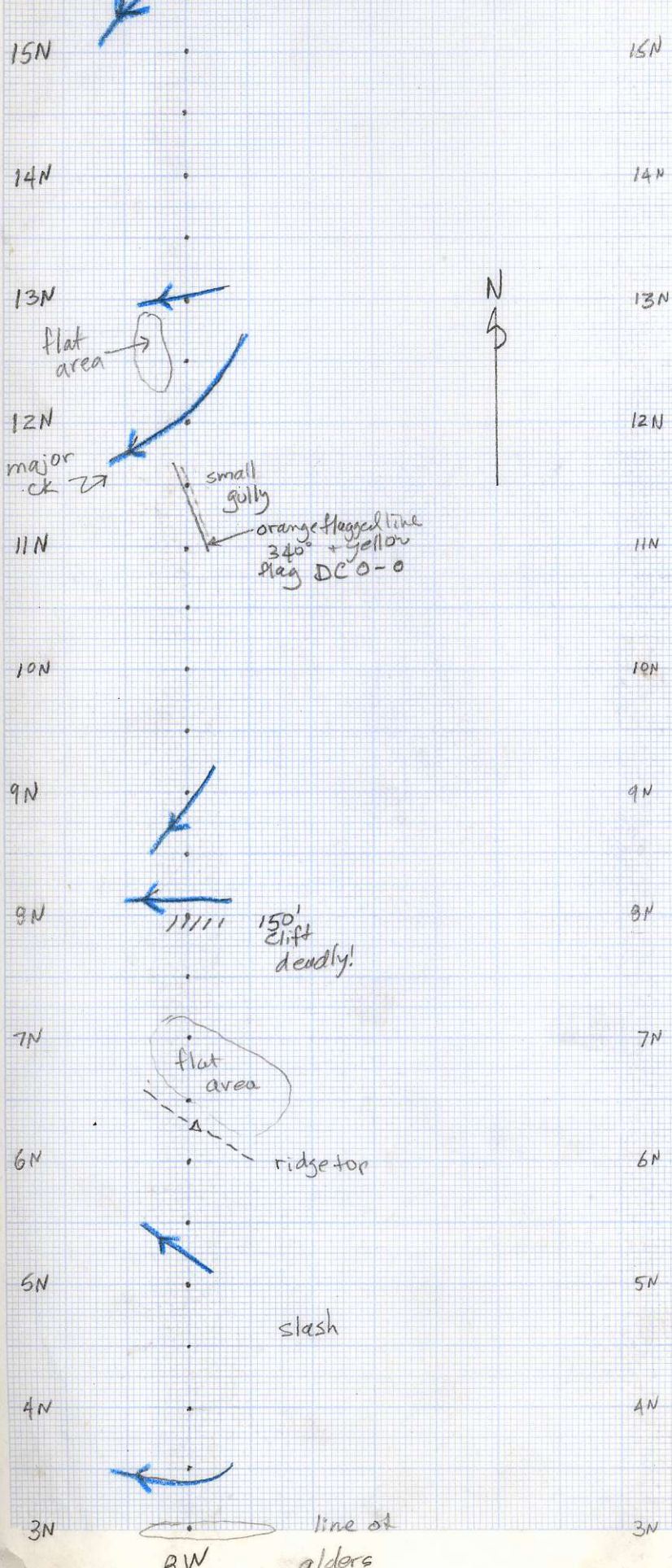


1:5,000

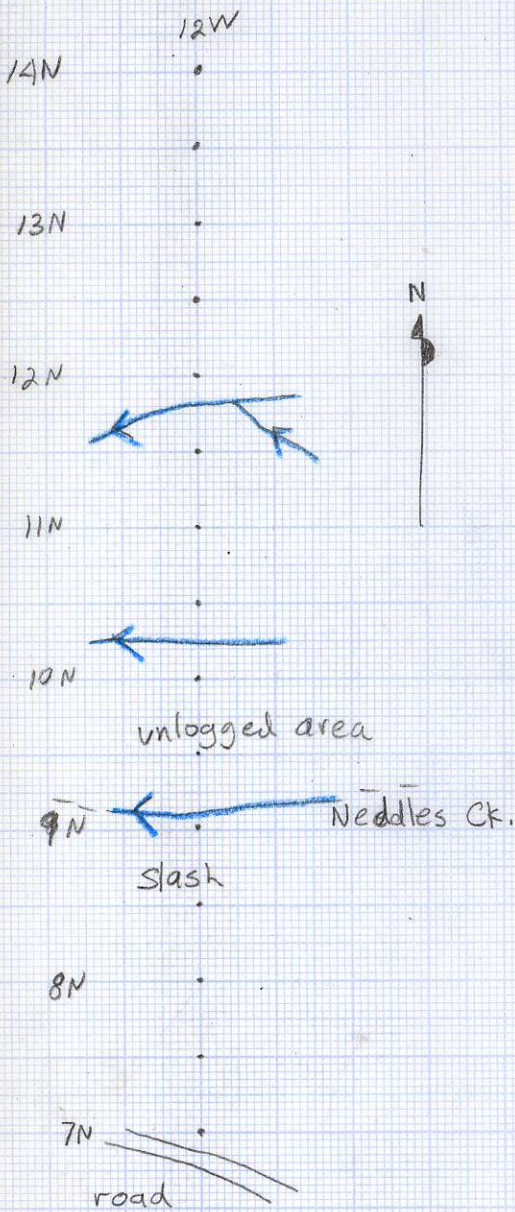
82 TSM  
 major CK → canyon  
 end of line

Course Grid  
 Line 8W

1:5,000

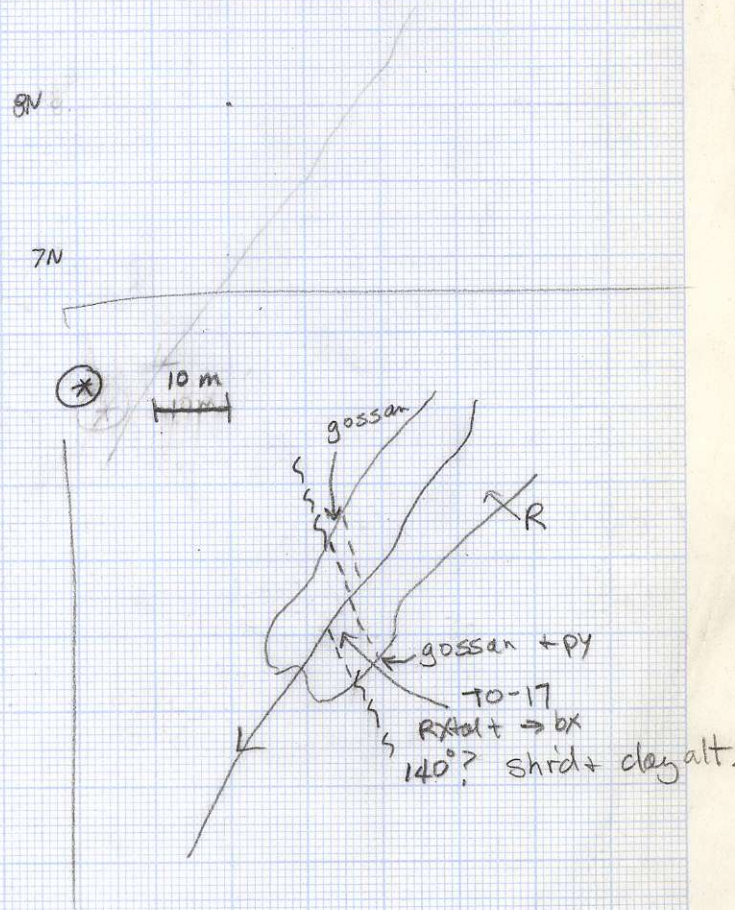
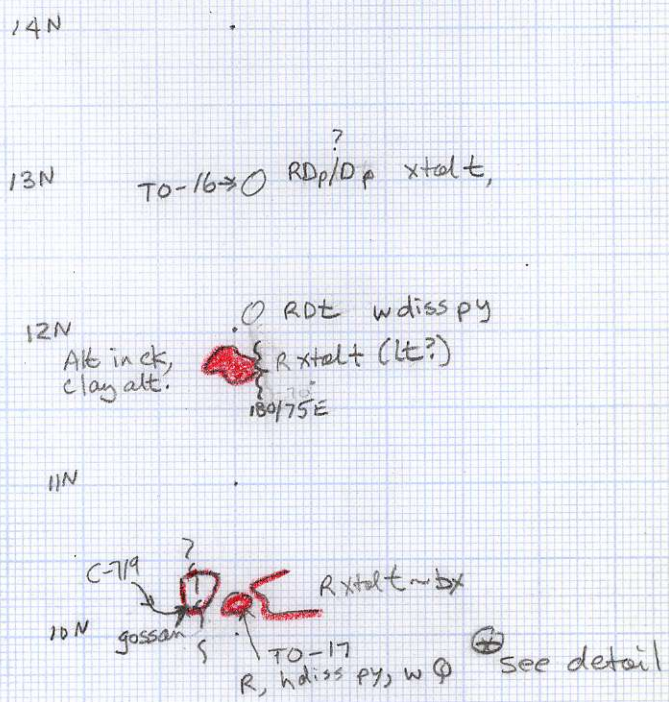


soils



Geology

samples (analysed)  
81-KC-TO-17



D.F.

Sept. 10 / 81

Courte  
Grid

1:5,000



Line 14W

14N

1

.



tree

13N



slash

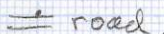
12N



11N

.

10TSPN



road