

G R A H A M

53° 25'

GRAHAM PROVINCIAL

includes:  
0.02oz/50'  
0.04oz/15'

Main showing:  
0.04oz Au/310'  
0.4% Sb

81-C-1

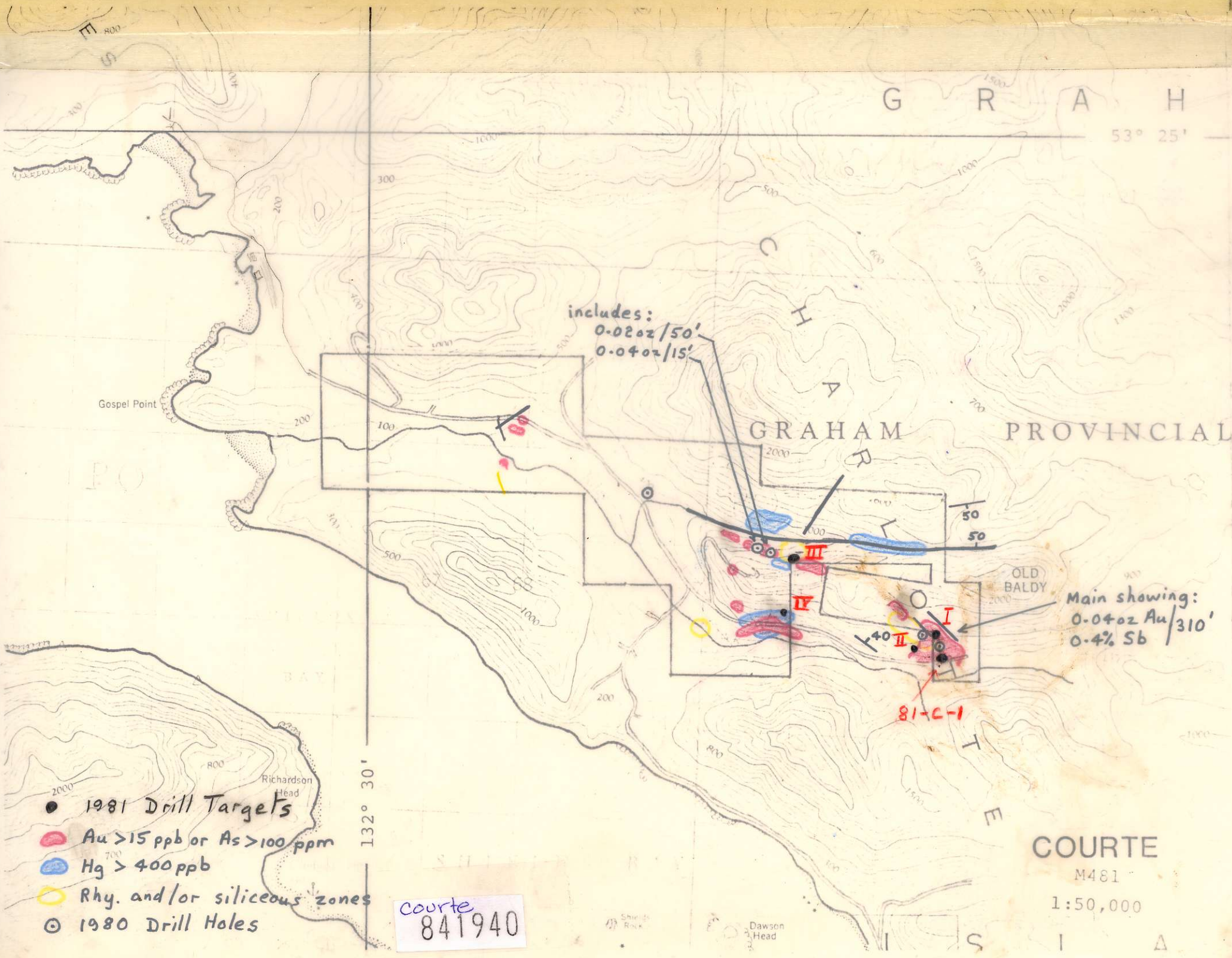
COURTE

M481

1:50,000

Courte  
841940

- 1981 Drill Targets
- Au > 15 ppb or As > 100 ppm
- Hg > 400 ppb
- Rhy. and/or siliceous zones
- 1980 Drill Holes



C 417 418 (100' 500' resp.)

C 416

C 415

C 400

C 399

C 398

C 397

C 396

C 395

C 1096

C 1095

C 1094

C 1093

C 1090

C 1091

C 380

C 1092

C 379

C 1059

XR 350

C 378

C 377

R 349

C 376

300

RILEY 2

444 (10)

500

600

5

C 414

R-917

XR 379

C 1030

C 1031

C 1032

C 1033

700

600

NEEDLES CREEK

C 818 Fault Zone

C 842

C 841

C 843

C 844

C 845

C 846

C 847

C 848

C 849

C 850

C 851

C 852

C 853

C 854

C 855

C 856

C 857

C 858

C 859

C 860

C 861

005 90

C 1020

C 1021

C 820

C 819

C 1087

C 821

C 1019

C 1086

C 1022

C 843

C 1023

C 822

C 1085

C 1024

C 1025

C 1084

C 394

C 1026

C 841

C 1029

C 1027

C 842

C 1028

C 1030

C 843

C 1029

C 1031

C 844

C 1030

C 1032

C 845

C 1031

C 1033

C 846

C 1032

C 1034

C 847

C 1033

C 1035

C 848

C 1034

C 1036

C 849

C 1035

C 1037

C 850

C 1036

C 1038

C 851

C 1037

C 1039

C 852

C 1038

C 1040

C 853

C 1039

C 1041

C 854

C 1040

C 1042

C 855

C 1041

C 1043

C 856

C 1042

C 1044

C 857

C 1043

C 1045

C 858

C 1044

C 1046

C 859

C 1045

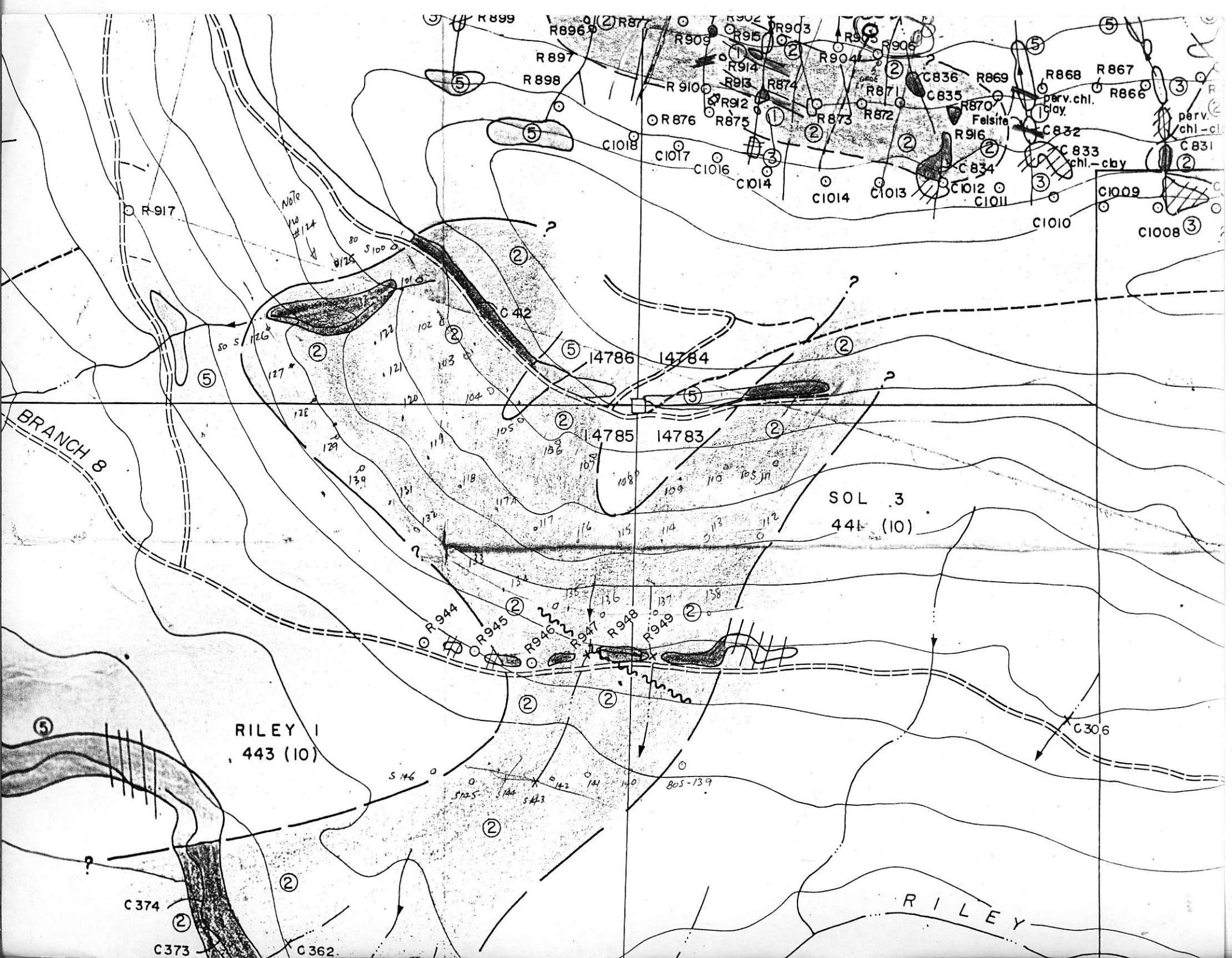
C 1047

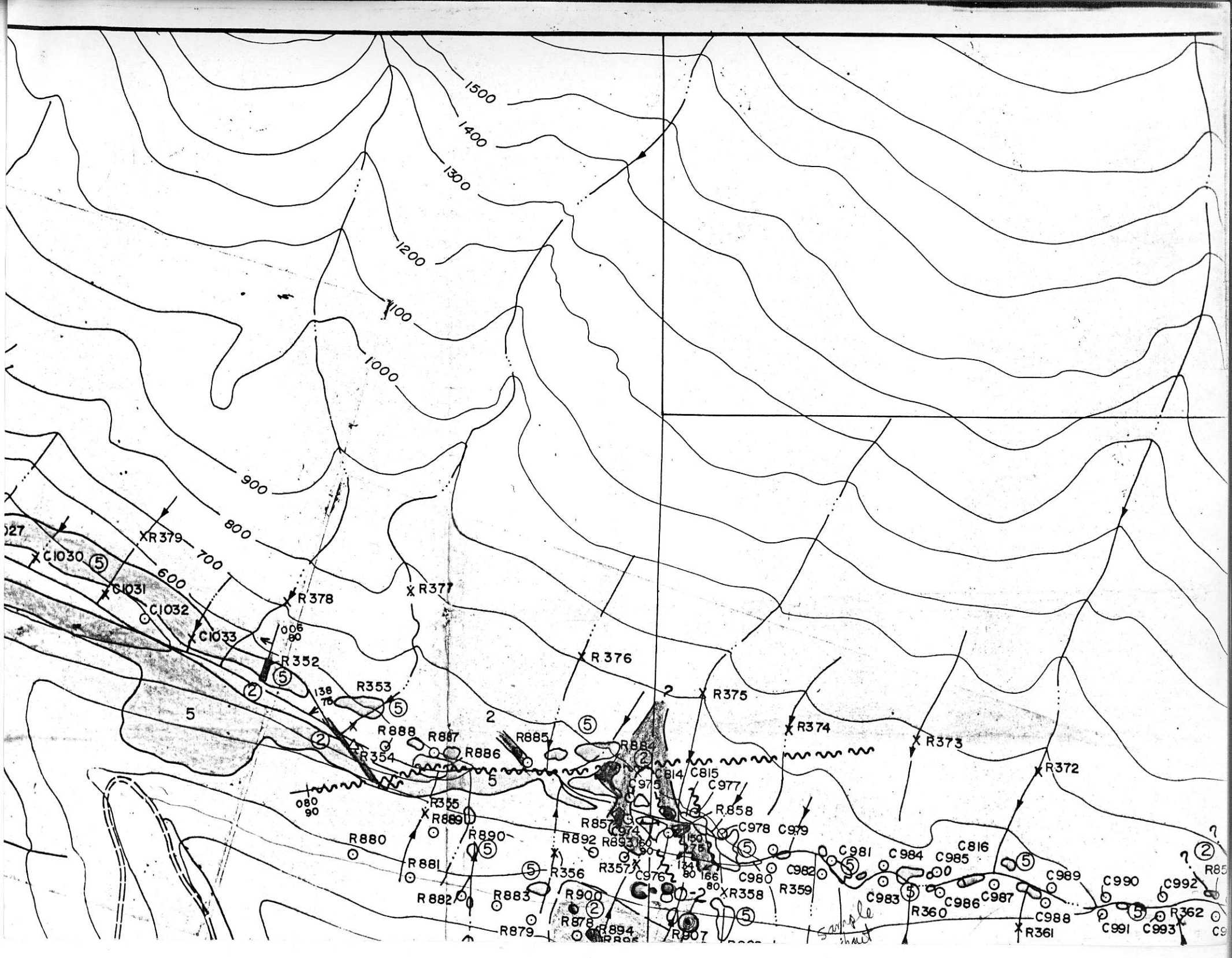
C 860

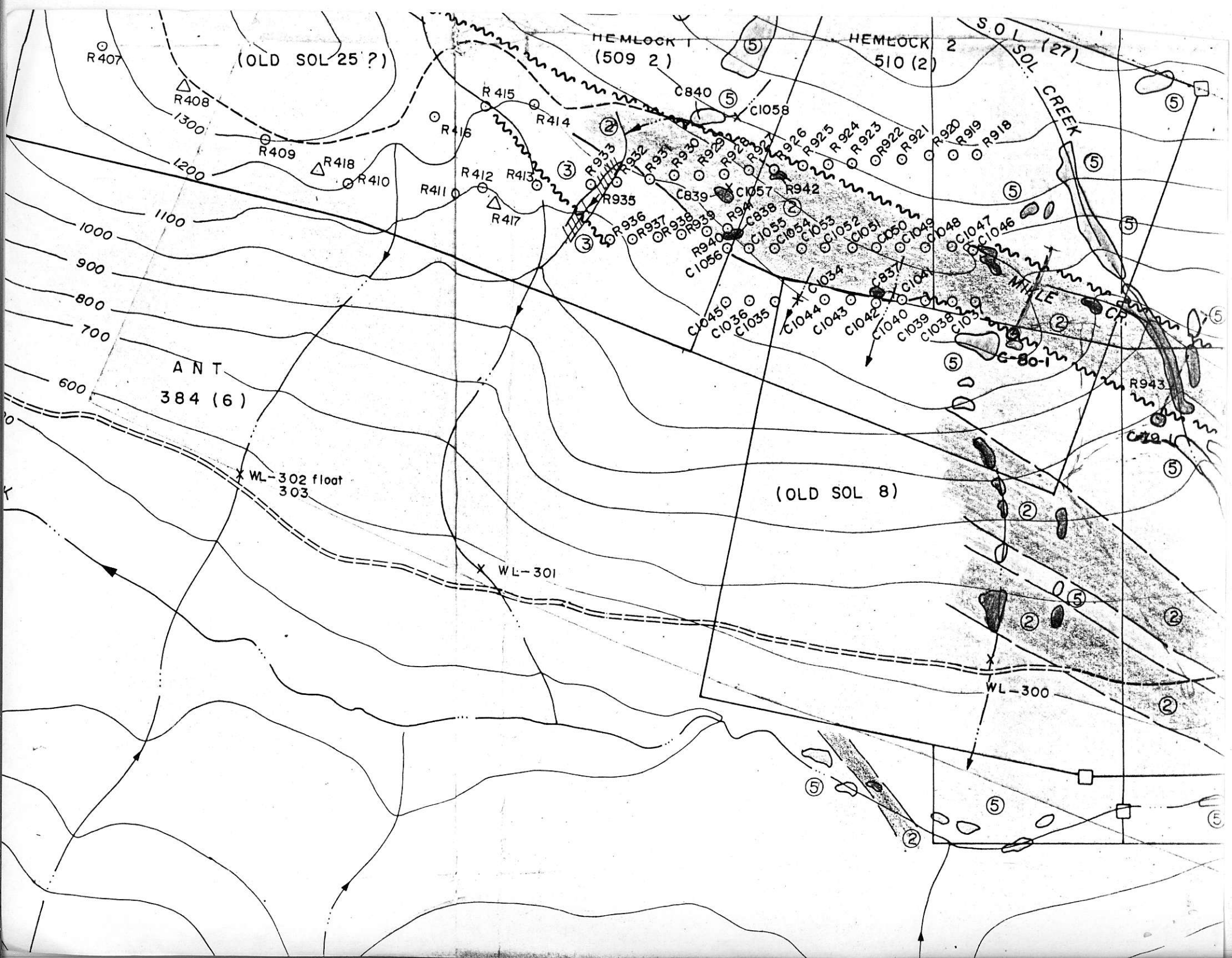
C 1046

C 1048

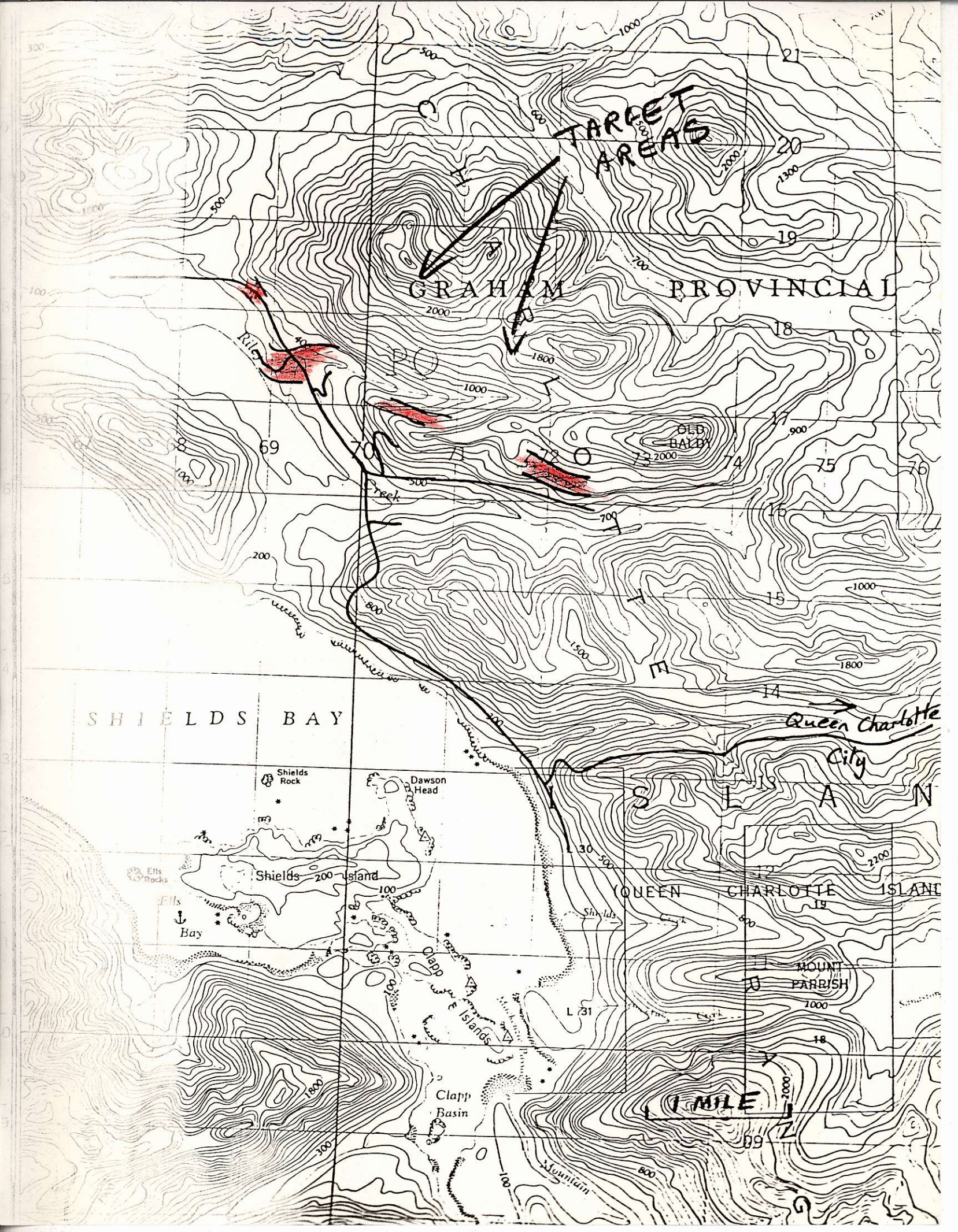




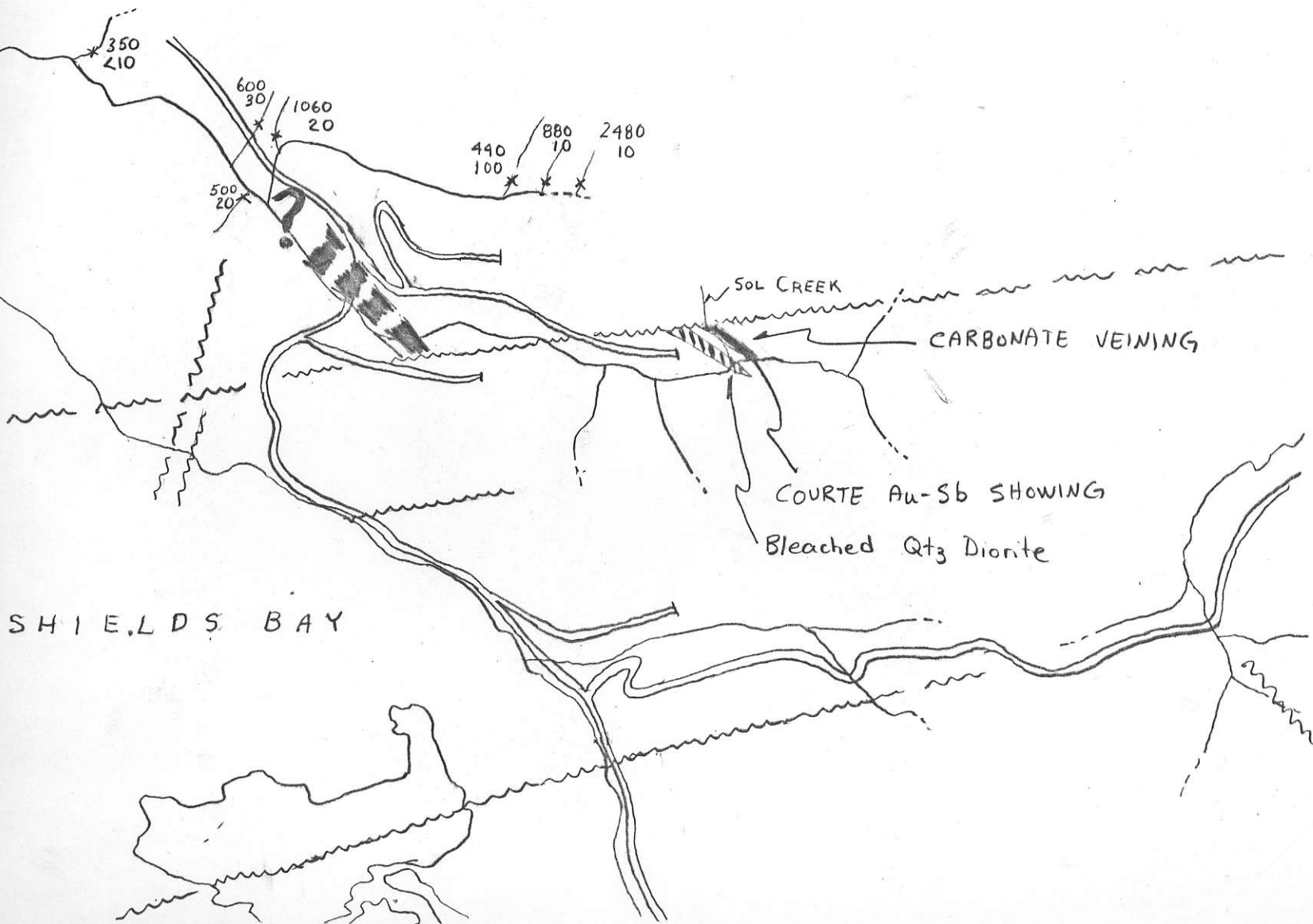












# Comments of Courte

## ① Alteration - corb-sericite

- intensity seems to correlate with Au content in core and in Sol creek.

- Some areas around DDH C-80-2/3 are not as altered as the core indicates.  
- alteration may be under cover if so possibly more pits would be handy.

② Au value appear to be in fine grained size.

③ Little quartz veins. Only qtz veins with Sb in Sol creek - Maybe a fringe of hydrothermal system

Odd qtz vein at depth carries some Au  
su C-80-3 (194-200 - 0.029 g/ton).

④ The Sol creek area may be separate from Needles creek. It appears to be more related to Sb and a rhyolite which is in very close proximity ~~closer~~ to the intrusive.

The Needles creek area is more loosely related to the intrusive and DDH holes on the south side of the intrusive may help to prove this.

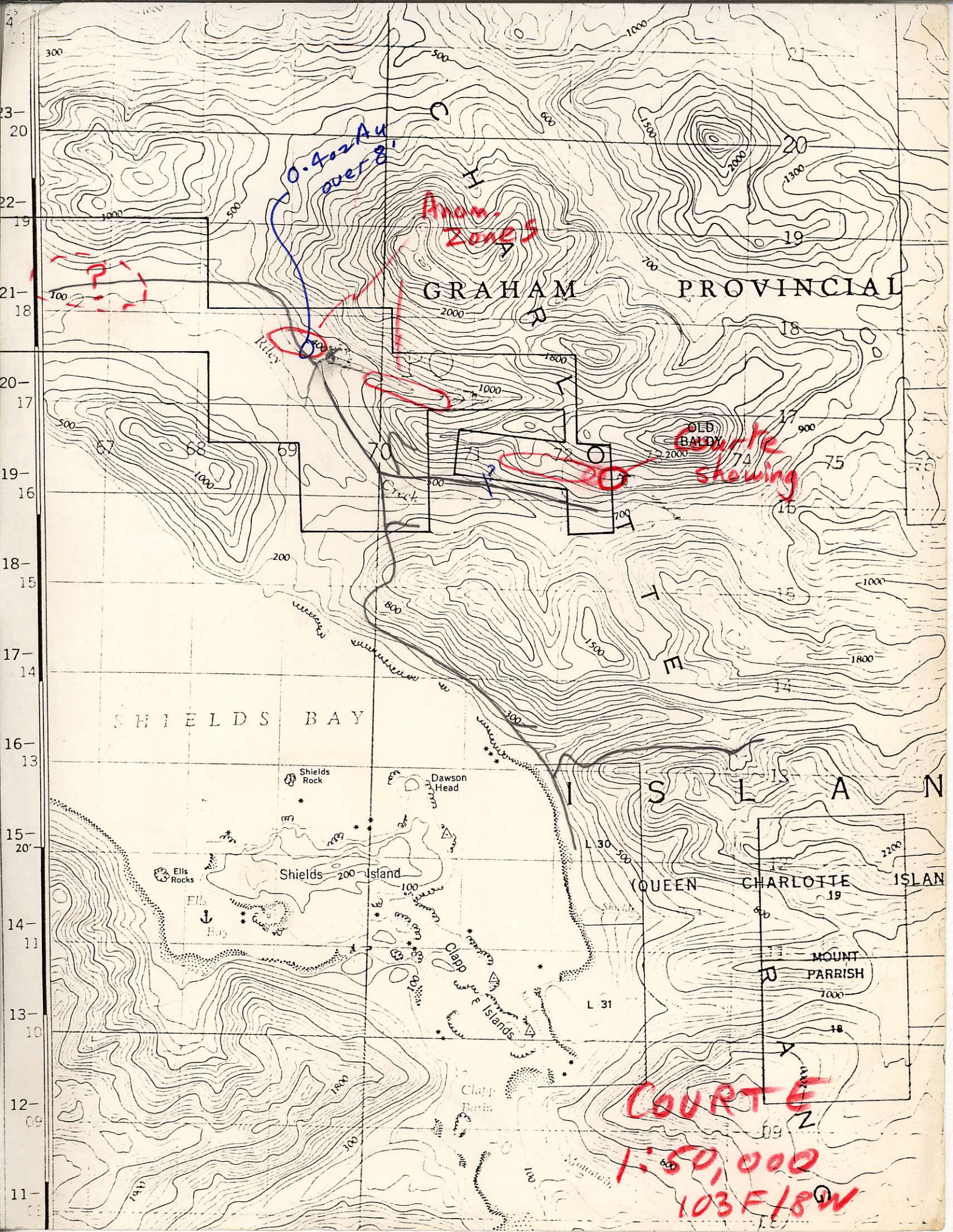


③ further hole in Sol Creek required to test showing.  
Previous drilling did not test anomaly.









0.4oz Au  
over 8'

Anom.  
Zones

GRAHAM PROVINCIAL

Old Baldy  
Circle showing

SHIELDS BAY

ISLANDS

QUEEN CHARLOTTE ISLAND

MOUNT PARRISH

COURT E  
1:50,000  
103 F/8W



COURTE  
1979/80 DRILL HOLE SUMMARY

<u>Hole #</u>	<u>Length</u> m	<u>Best Intersections</u>			<u>Au values</u> oz/ton or ppb	<u>Comments</u> (Mineralized Sections)
		<u>Interval</u> m	<u>Length</u> m			
C-79-1	138.4	100 - 104	4	0.015	Andesitic agglomerate. Moderate to strong carbonate and saussurite.	
		114 - 116	2	0.018		
C-80-1	120.7	50 - 54	4	812 (0.023)	Andesitic agglomerate. Strong clay and moderate to strong saussurite. Small gouge zones. Fault @ 78 m.	
		60 - 78	18	316 (0.009)		
R-80-1	159.7	-	-	-		
C-80-2	218.5	142 - 154	12	852 (0.025)	Andesitic agglomerate. Strong saussurite. Some bleaching. 40 cm Crush zone @ 167 m. 1.5 cm massive arsenopyrite @ 212.4 m.	
		166 - 170	4	1480 (0.043)		
		210 - 214	4	107 (0.003)		
C-80-3	218.5	58 - 74	16	776 (0.022)	Tuffaceous agglomerate and sandstone. Bleaching and clay. Local quartz, pyrite, and arsenopyrite. Andesitic agglomerate. Weak to strong saussurite and carbonate. Local quartz and arsenopyrite.	
		182 - 186	4	507 (0.014)		
		194 - 200	6	990 (0.029)		
TOTAL	855.8 m (2800 feet)					



QUEEN CHARLOTTE AREA (COURTE)

AMPLE NO.	LOCATION	TYPE	SYMBOL	DESCRIPTION	MINERALIZATION
C-DO-1	At site of hole 79-C-1	olc		Andesite, sl. altered.	430 ppb Au 500 ppb Hg
C-DO-2	Courte showing (W. fork Sol. ck.)	"		Dyke? brn weathering. Smooth olc surface andesitic? Highly altered.	20 ppb Au
C-DO-3	" "	"		High grade q vein w/ stibnite	10 ppb Au
C-DO-4	" "	"		High grade stibnite with cinnabar.	100 ppb Au 550 ppb Hg
C-DO-5	" "	"		Intervein, altered material	660 ppb Au 1200 ppm As
C-DO-6	" "	"		Highly pyritic. Very low sb. Low q.	20 ppb Au
C-DO-7	Courte showing (E. fork Sol ck)	"		Vein material	30 ppb Au

QUEEN CHARLOTTE AREA (Conte)

SAMPLE NO.	LOCATION	TYPE	SYMBOL	DESCRIPTION	MINERALIZATION
C-DO-8	<del>upstream</del> Sol creek, just upstream of mineralized area	olc		Andesite, relatively fresh	30ppb Au
C-DO-9	Sol. ck. ~100m upstream from road	olc		Dyke? andesitic, granular	10ppb Au
C-DO-10	Vicinity of and up hill from holes C-80-2&3	olc		Andesite, fairly fresh	1% vein & diss. py
C-DO-11	" "	olc		Felsite dyke	10ppb Au 460ppb Hg
C-DO-12	Ridge above C-DO-10 and 11. Near end logging roads	Float (local)		Diorite	
C-DO-13	" "	olc		Volcanic? v. highly altered. At stock contact	10ppb Au
C-DO-14	Branch 8 / Destroyed road junction	Float (local)		Kunga flaggy limestone	10ppb Au