

841888
Hector 1+2
MS11

51187-9
Sunny, hot

S.M.

June 10/82

9a-H gn

fngr

ASH TUFF w wt FD, plc QZ, gn CL grains
rd Rock FRAG

MASS

DACT

min EP VNLT, min GO-MN FXCT
min DISS PY in places w ~~not~~ GO
BOUL only,

9b - mm gn

mmgr

ASH TUFF w gn CL grains

FOLT

ANDS

mod GO FXCT

BOUL only

112 m

qc - mm gn

fn gr

CRYS TUFF w wt FD, gn, ph rock
frags
MASS

ANDS

mod GO, HE FXCT

outcrop!

○ S1182-10

10a - dk rd

○ CS gr, frag

LAPL TUFF w gn cl, rd HE FRAGS
wt FD xls

○ FOLT

ANDS

min GO FXCT, min EP VULT

10b outcrop, prob variation of qc?

10b - lt gy

○ vt gr w ve frags < 1cm

TUFF LIMS w rd, gn, wt Rock FRAG
in LIMS matrix

○ BEDD < 50cm thick

LIMS

○ min wt FXCT

BOWL

51182-0001

Sunny, hot

BC

June 10

Hector 2 claim

irrigation ditch bank

reconnaissance

soil

medium brown

50% clay, 50% silt
dry.

20 cm.

0002

Same

0003

same except

45% clay, 45% silt, 10% gravel

0004

same except

dark brown

45% clay, 45% silt, 10% gravel.

0005.

Same except

dark brown

10% organic, 45% clay, 45% silt

0006

same except

45% clay, 45% silt, 10% gravel

0007

same except

40% clay, 40% silt, 20% gravel.

DON'T FORGET CONTOURS, DRAINAGE, NORTH ARROW, LAT/LONG, SAMPLE SITES, WORKINGS, TRAILS, GOSSANS, OBSERVED GEOLOGY: DEFINED --- INFERRED --- ASSUMED.....

GOSSAN MINERALS	INTRUSIVE	LIMESTONE	SHALE	CHERT	VOLCANIC	CONGLOMERATE	SANDSTONE	SILT	ROCK	PAN	WATER	SPECIMEN SITE
-----------------	-----------	-----------	-------	-------	----------	--------------	-----------	------	------	-----	-------	---------------

A.B.: DO NOT WRITE ON OTHER SIDE OR USE COLOURS

Project MS11

Sampler BC+SM

Date JUNE 10/82

NTS 92 I 2

Location, Target (words)

HECTOR 1 AND 2 - Geological and geochemical reconnaissance photo no.

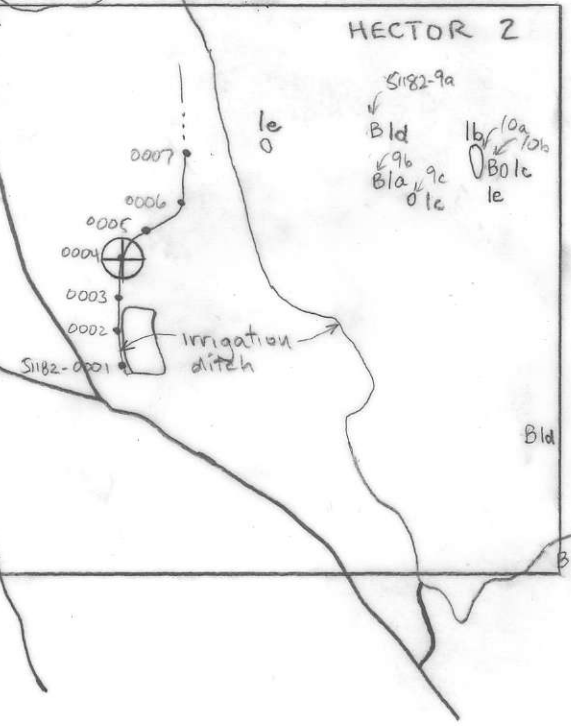
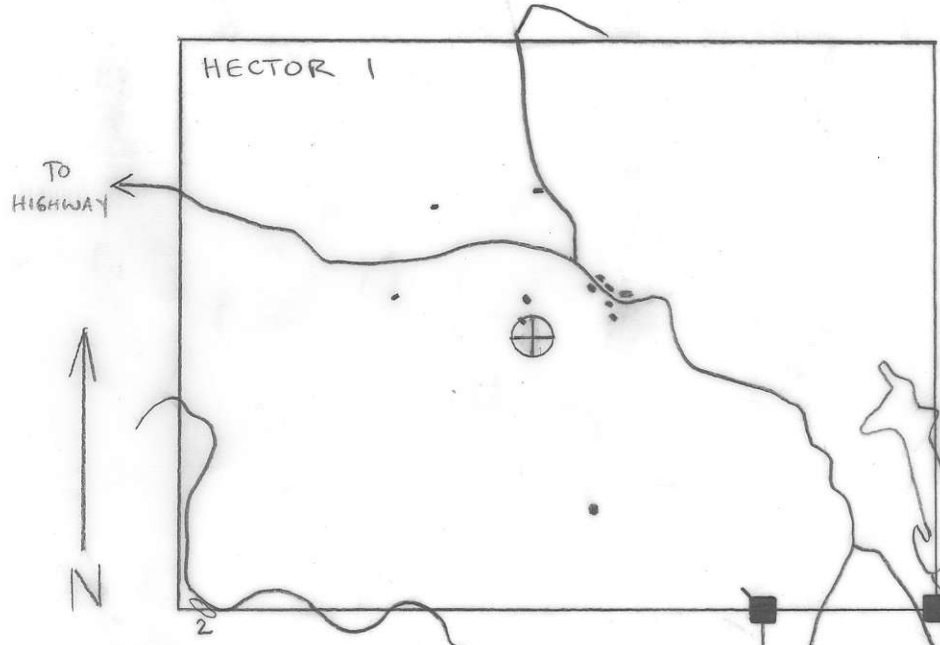
Scale 1:20,000

Page 1 of 1 Traverse

Sample Nos S1182-9,10 S1182-001 to 007

Cert. Nos OVERLAY PHOTO BC79053-158 110

- SYMBOLS**
- House
 - Road
 - Stream
 - Outcrop
 - Boulder
 - Air EM Anomaly
 - Soil sample
 - Rock sample
 - Legal Corner Post



- LEGEND**
- 3 Clapperton Conglomerate
 - 2 Jesse Creek Granite
 - 1 Nicola Group
 - a Andesite Ash Tuff
 - b Andesite Lapilli Tuff
 - c Andesite Crystal Tuff
 - d Dacite Ash Tuff
 - e Tuffaceous Limestone

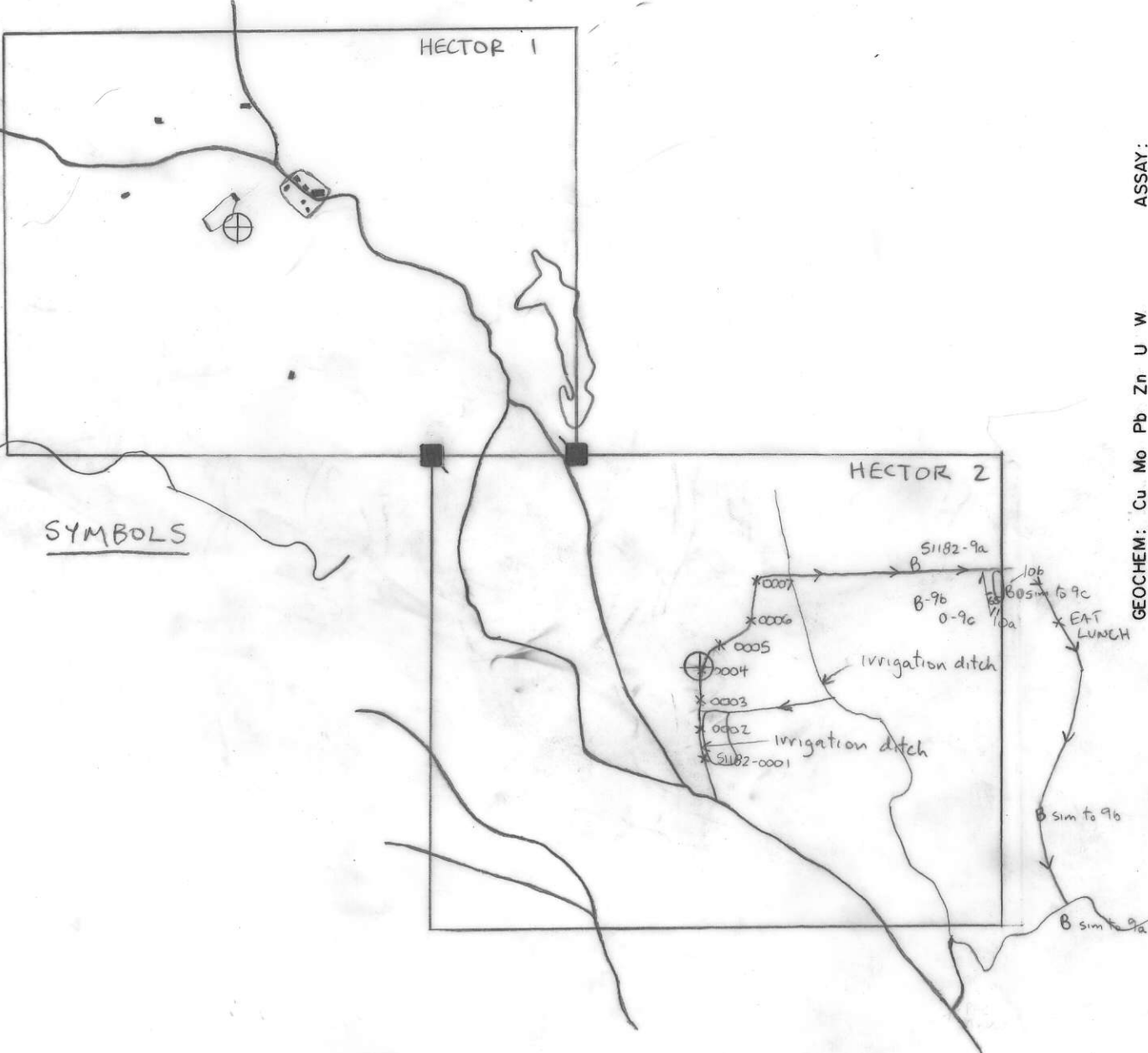
GEOCHEM: Cu Mo Pb Zn U W ASSAY:

WSD--92999 1108
 ATTITUDES
 (100/40 N)

Project MS11	NTS 92 I 2	Scale 1:22,222	Page of	Traverse
Sampler BC+SM	Location, Target (words) HECTOR 1 AND 2 - GEOLOGICAL AND GEO- photo no. CHEMICAL RECONNAISSANCE		Sample Nos 51182-9,10	51182-0001-0007
Date JUNE 10			Cert. Nos	OVERLAY PHOTOS BC79053-110 -158

- GOSSAN, MINERALS
- INTRUSIVE
- LIMESTONE DOLOMITE
- SHALE
- CHERT
- VOLCANIC
- CONGLOMERATE
- SANDSTONE SILTSTONE
- SILT x SOIL ● ROCK ■ PAN Δ WATER O
- LIMESTONE DOLOMITE
- SHALE
- CHERT
- VOLCANIC
- CONGLOMERATE
- SANDSTONE SILTSTONE

DON'T FORGET CONTOURS, DRAINAGE, NORTH ARROW, LAT/LONG, SAMPLE SITES, WORKINGS, TRAILS, GOSSANS, OBSERVED GEOLOGY: DEFINED --- INFERRED - - - ASSUMED.....
 SPECIMEN SITE A,B,...; DO NOT WRITE ON OTHER SIDE OR USE COLOURS



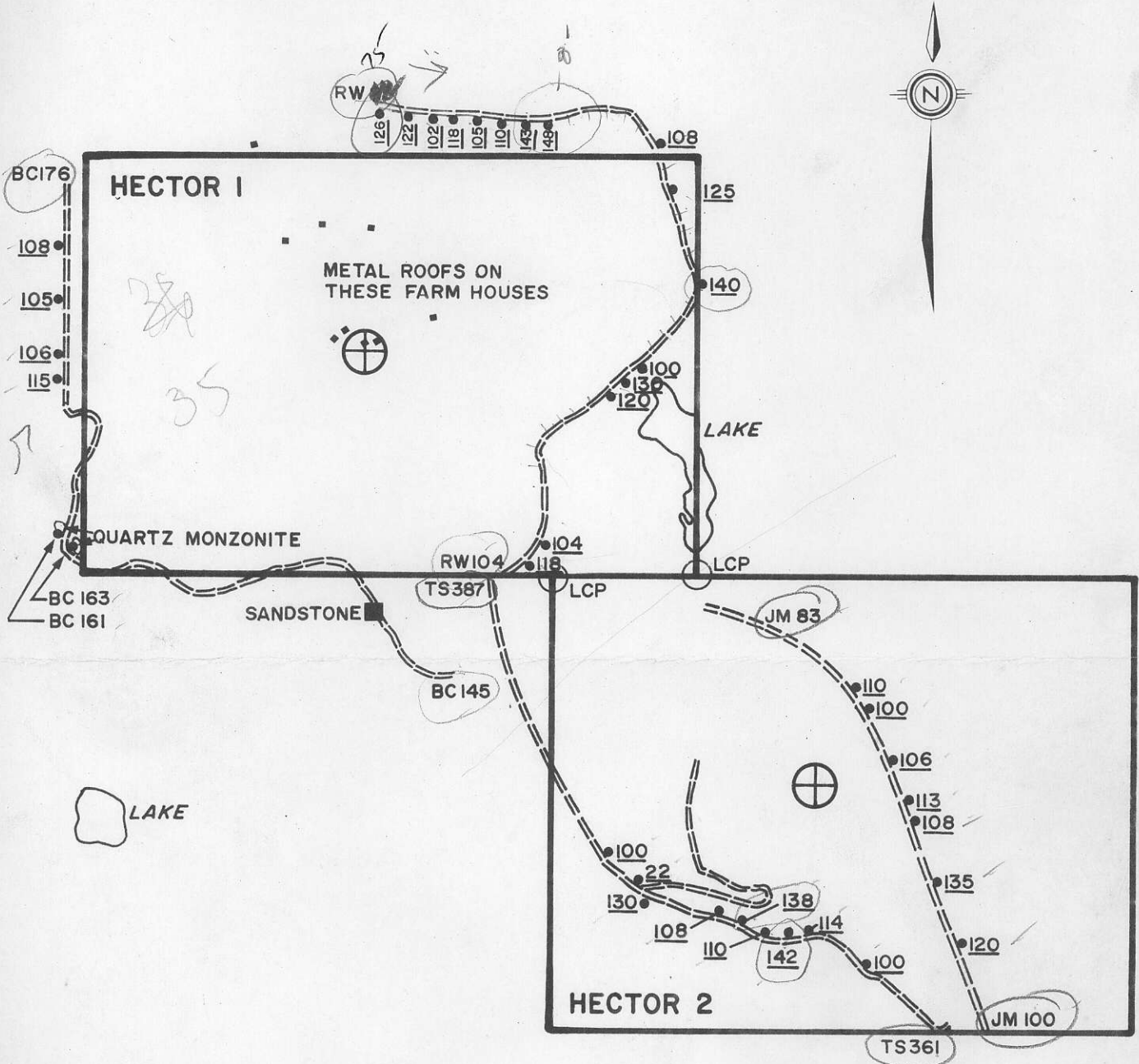
GEOCHEM: Cu Mo Pb Zn U W

ASSAY:

GEOCHEMISTRY SUMMARY

	N°	Cu	Pb	Zn	Ba (RANGE IN PPM)
SOIL	104	19-62	1-10	51-160	420-720
ROCKS	2	6-13	2-4	18-39	660

43 Zn



LEGEND

- AIRBORNE EM ANOMALY
- LCP
- SOIL SAMPLES EVERY 100M ppm. Zn. in soil

Chevron Standard Limited Minerals Staff	
NICOLA REGIONAL HECTOR 1 & 2 CLAIMS GEOLOGY & GEOCHEMISTRY	
FIGURE No 1	PROJECT No M 511
DATE DEC 81	REVISIONS
NTS No 92 1 2W&E	SCALE 1:16000
COMPILED BY SM	FILE No G1

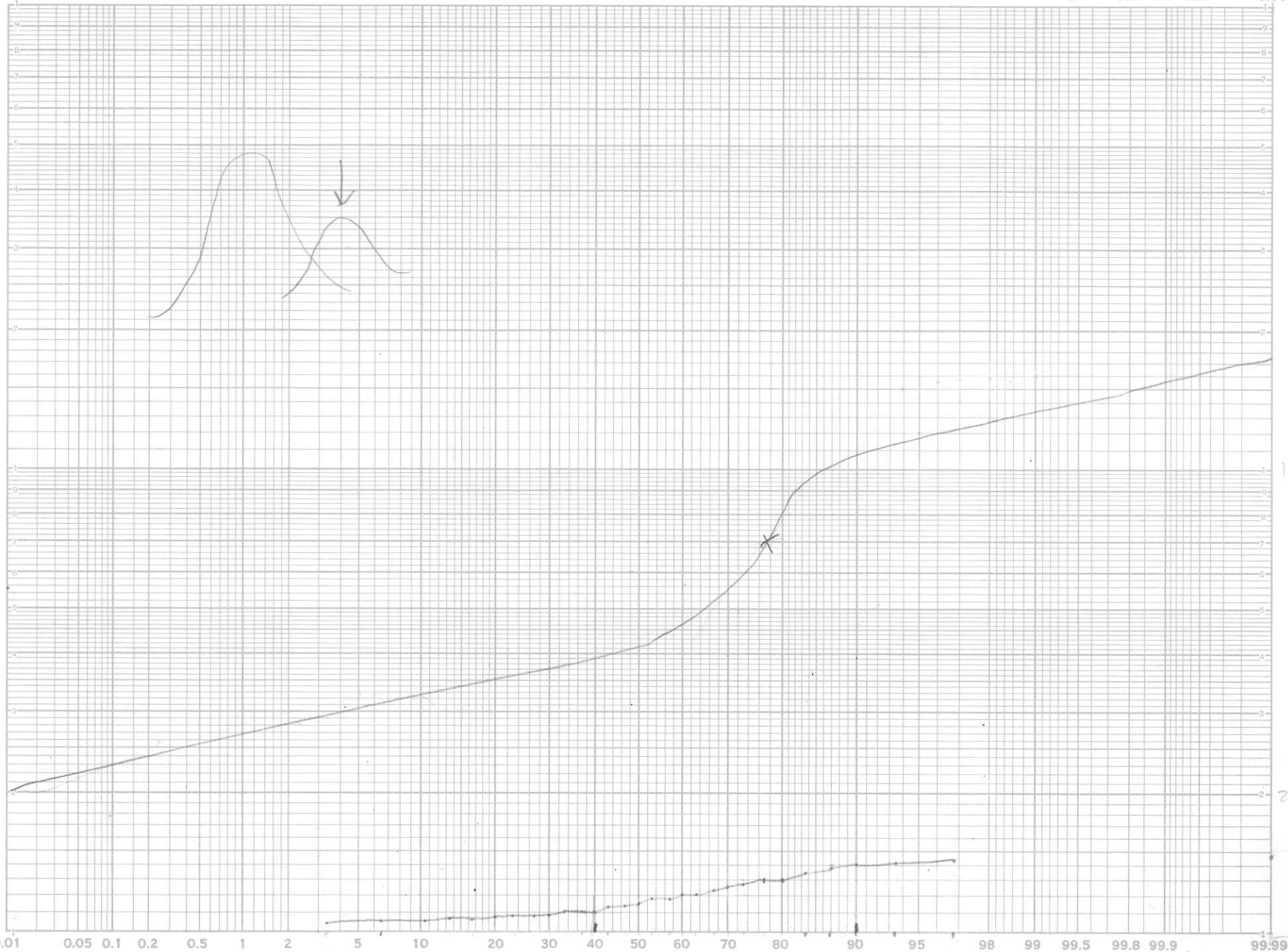
don't
believe
it!

#1- Field

Hector

Zn. (ANI?)

99.99 99.9 99.8 99.5 99 98 95 90 80 70 60 50 40 30 20 10 5 2 1 0.5 0.2 0.1 0.05 0.01



ANI?

A

1000

200

100

10

ppm

