

SELISH MIN.

D. H. JULY 25, 81

511

selish

841882

JULY 25 81

4020 FT. ACT

50 M SAMPLES

NO	ACT	DEC	DESCRIPTION					
1	4020	—	MED BR STREAM SILT					
2	"	—	LT BR SANDY SILT SOIL					
3	"	"	"	"	"	"	"	
4	"	"	"	"	"	"	"	
5	"	"	"	"	"	"	STONY "	
6	"	"	"	"	"	"	"	
7	"	"	"	"	"	"	"	
8	"	"	"	"	"	"	"	
9	"	"	"	"	"	"	"	
10	"	"	MED BR			"	"	"
11	"	"	"	"	"	"	"	
12	"	"	"	"	"	"	"	
13	"	"	"	"	"	"	"	
14	"	"	MED BR W RUST SANDY STONY SOIL					
15	-		ROCK SAMPLE - MOD CHLOR, WEAK PYRITE, PACE GAGE ALTERED RYOLITE					
16	-		LT BR SANDY SILT SOIL					
17	"	"	" STONY SILT SOIL					
18	-	"	" " " " "					
19	-		ROCK SAMPLE ANDESITE - MOD CHLOR, WK PY., EPIDOTE CRYSTALS + VEINING, ROUND WHITE AMYGDALLES (QUARTZ)					
20	-		MED BR SANDY STONY SILT SOIL					
21	-	"	" " " " "					
22	-	"	" " " " "					

R. D. PENHALL LTD. MADE IN B.C.
DUKSBARK WATERPROOF

JULY 25, 86

SSEELISH MTN

D.H.

ROAD AT AET
TRAVERSE

SOILS

CONT

	MEP BR	SANDY	STONY	SILT	SOIL
23					
24					
25					
26					
27	LIGHT BR				

BRUCE

JULY 25th
REGIONAL UP SELISH MT.
CONTINUING FROM CRK. AROUND
TO WEST AT 3750' elev.

Starting elevation at crk: 3750'

BC-72 silt from crk bed
good silt w/ 20% organic 30% sand
50% silt,

BC-73 soil from bank of road at 20 m
from crk. and at 3780' elevation
30% pebbles
60% sand 40% silt from 12"

BC-74 soil at 3800 ft. distance of 70 m
tan color 20% pebbles, 60% sand
and silt, 10% clay and org each
from 16" deep

BC-75 soil at 3790' distance of 120 m
tan 25% pebbles 60% sand
5% organic 10% clay 6" deep

BC-76 soil at 3770' distance of 170 m
purplish? tan coloring from 2" deep
appears that leached soil is down
further (C) 4" to deeper than diggable
15% pebbles 50% sand 15% organic
20% clay. 511 Selish

BC-77 - at 3760' and 220m
soil tan colour w/ 15% org
70% sand-silt 5% pebbles
rest clay from 8" deep.

BC-78 - at 3780' and 270m
soil tan colour w/ 10% org.
60% sand silt 25% clay
5% pebbles from 12" deep.

⊙ 310m distance: limestone w/ fossils (5m across)

BC-79 at 3760' and 320m
tan coloured 10% pebbles, 50% sand
and silt 30% clay 10% org. from
10" deep

⊙ 330m limestone o.c., again (5 meters)

BC-80 at 3760' and 370m
as above, 8" deep at edge of
tree line, 20% clay 15% org rest
sand-silt.

⊙ 380m limestone o.c.

BC-81 at 3750' and 420m
tan (lt) 15% pebbles 30%
organic 30% sand 25% clay
10"

⊙ 465m o.c. limestone again

BC-82 470m at 3750'
as above for BC-81

R. D. PENHALL LTD. MADE IN WASCOURTIER, CANADA
DURABLE WATERPROOF

BC-83 at 520 m, 3760' elev.

lt. tan 10% pebbles 20% org. 40%
sand + silt, 30% clay from 10" deep
this sample is right on a road.
that bears N.W.

BC-84 at 570 m, 3770' elev.

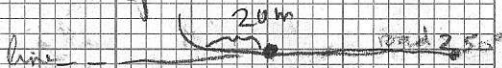
lt. tan 15% pebbles 20% org. 40%
sand + silt 25% clay
from 8" deep.

BC-85 at 620 m, 3760' elev.

very lt. tan 15% pebbles 10% org.
45% sand + silt 30% clay

BC-86 at 670 m, 3770' elev.

slight reddish tan as above from 10"
along road bearing 250°



20 meters from corner

BC-87 end of road 3780'

720 m. grey 15% pebbles

35% sand + silt 50% clay

BC-88 from right next to BC-87

at end of road. for 10 meters

Rock sample of Rhy w/ perfect flow
banding and grey lites, and in
pieces as in Charlottes. (sample was saved)

① 740 another O.C. of Rhy 5 m
long again w/ pyrite soil

BC-89 at 770 m and 3780 elevation
grey soil w/ 50% pebbles 5% org
25% clay 20% sand + silt
from 12" deep

BC-90 at 820 m 3770' elevation
slightly redish tan w/ 10% pebbles
10% org 25% clay 55% sand + silt
from 10"

BC-91 at 870 m 3760' elevation
grey loam w/ 10% pebbles
10% org 35% clay 45% sand
from 16" deep

② 900 m and 3800' ② 25 meters off
the line there is a huge OC
25 meters long of Andesite which

BC-92 like the Rhy (BC-88) shows
a distinct flow banding however
it seems slightly more ductile and
has no pyrite in it. OC has same
hard as conglom

BC-93 at 920 m. and 3780 elevation
tan coloured light soil w/ 40%
gravel 15% organic 20% clay
25% sand + silt from 14" deep

BC-94 at 3770' elevation and 970 meters
tan colored loam 10% organics
5% gravel 20% clay 65%
silt and sand.

at 970m also limestone flt. lots of it
at 1010 m limestone OC.

BC-95 at 3760' elevation and 1020m
reddish brown from between rocks on
steep slope. 25% org. 5% gravel
60% sand with rest clay. from 8"
at northern extremity of ridge

BC-96 at 3760' elevation and 1070m
reddish loam. 20% org. 10% gravel
10% clay rest sand + silt.
from 8" deep.

Limestone flt and misc small rocks
from BC-95 to BC-96

BC JULY 26th
 TOBY + RASTUS CLAIMS

went 900 m. up ridge S.E. from point where road enters field with lake in middle. Soils every 50 m. from the ridge east to road

#	Depth	Color	% gravel	% sand	% clay	% org.
BC-97	5	Grey	20	60	10	10
98	12	lt. grey	10	60	20	10
99	10	Grey	15	70	10	5
100	8	Grey	10	65	10	5
101	12	"	10	75	10	5
102	10	"	10	70	15	5
103	8	"		no above		
104	14	Grey	20	45	10	25
105	8	"	20	45	10	25
106	10	"	35	30	15	20
107	10	Grey	40	40	5	15
108	8	"	30	60	5	5
109	6	brown	15	70	10	5
110	12	lt grey	5	55	35	5
111	8	"	5	60	30	5
112	8	brown-blk	10	50	20	20
113	6	lt grey	10	55	30	5
114	6	lt brown	15	45	30	10
115	10	grey	10	40	40	10
116	6	"	15	55	20	10
117	8	"	10	60	20	10
118	10	lt. yellow-tan	10	60	20	10
119	12	"	15	55	25	5
120	12	grey	10	75	10	5

R. D. PENHALL LTD. MADE IN VANCOUVER, CANADA
 DUNSBANK WATERPROOF

METRIC FIELD (S)

Salish Mtn. samples

July 25 50m. apart

Contour line - start at cliff top of cliff immediately above

511

	Color	%Org	%Si	%S	%Gr
RW-1	Br	20	40	40	
" 2	Br	10	30	60	
" 3	Br	15	40	45	
" 4	Br	10	30	60	
5	BrGr	20	70	10	
6	Br	10	20	50	20
7	Br	10	"	"	"
8	Br-red	10	10	80	
9	Br	20	40	40	
10	(Br)	10	30	60	
11	Br	20	30	50	
12	Br	10	50	40	
13	Br	10	40	50	
14	Br	20		80	
15	Br	20	40	40	
16	Rock				
17	Bl/Br	30	10	40	20
18	Br	20	20	30	30
19	Br	10	50	40	
20	Br	30	20	30	20
21	Bl	30		70	
22	Br	20	50	30	
23	Br	20	30	50	
24	Br	20	40	40	
25	Br	30	50	20	

511


Salish

(4) 32 + 10 to 33 ^{m → wf} hematite

(9) 33 + 25. wf
32 0

(10) similar to 9 33 0

except small outcrop
of h. epv in and
wpyr

(10) 

→ mjt road

135

Salish mtn - continued

<u>SIL</u>	<u>Color</u>	<u>%Dmg</u>	<u>%Cl</u>	<u>%S</u>	<u>%Gr.</u>
RW-26	Br	20	20	60	
RW-27	Br	20	50	30	
28	Br	20	30	30	20
29	Br	30	20	40	10
30	Br	20		80	
31	Br	20	60	20	
32	Br	10	30	60	
33	Br	10	10	80	
34	Br	20	10	50	20
35	Br			100	

(35) at road.

36 - Road

41 - GRASS
Forest

51 + 20 - ridge top

July 23

~~73, 74 N 55 to 62 E~~

Running 1, 5 staking

Ralph at 5:30 1200 m from
unit post @ hit line - blue yellow
Flagging ~ E-W flag says - 142904
Sta 13 C, P 37 BIK B A00596

Ross

ROCKS

Salish mtn

(1) at RW 1 - wf - Andesite

RW 6 - old road

(2) at RW 8 - wf (hpf^m, calc^m)
further - sed



(3) RW 9 + 20

8 (2)

wf - And., wcl, g

9 (3)

old road

And? 0

(4) - RW 15 - wf, pin, 15 (1)

(5) RW 15 + 30 0

+ 0 17

on 15 from particles 17

in the sand 7 18

(6) RW 18 + 30 9 (2)

RW 20 + 10 17

(7) hem and 22 + 20 + 0 RW 24

Ross Salish Mtn

July 30 20 E BL 20 E to
30 N, 29 N, 28 N - 20 E

Start at 30 N ~~E~~, 20 E BL to head
East 350 m.

#	Grid	Color	%Org	%Cl	%S	%Br
30N 105	20+50E	Br	10	20	60	10
" 106	21 E	Br	10	10	70	10
" 107	21+50E	Br	10	10	80	
108	22 E	Br	30		70	
109	22+50E	Br	10	20	70	
110	23 E	dBr	20	20	50	10
111	23+50E	Br	20	10	70	
112	23 29N 23+50E	dBr	20	10	50	20
113	23 E	Br	10		90	
114	22+50E	Br	20	10	70	
115	22 E	Br	20	30	50	
116	21+50E	Br	10	20	60	10
117	21 E	Br-Red	10		90	
118	20+50E	Br	10	20	50	20
119	20E 20E	Br	20	10	70	
Hit 20 E BL at 29+03E						
20+03E						
28N						
120	20+50E	Br	20	10	70	
121	21 E	Br	20		80	
122	21+50E	Br	10		60	30
123	22 E	Br-red	10	10	80	
124	22+50	Br	20		80	

R. D. PENHALL LTD. MADE IN VANCOUVER, CANADA
DUKSBÄK WATERPROOF

125 23E 10% org 60% Cl, 30% S
126 23+50E 10% org 20% Cl, 40% S 30% Gr



29N

— road at 20710E

25N

— road at 21450E

48

49

50

51

52

53

54

55

CP

3/6/68

+

CRK



CLAIM POST

+

53

668612



FINAL POST
NO 2

EAST #2

H. MENEL

1966

BL

511

Selish

CB

30/7/81

Selish25N - 511

82

- CB-72 - Light grey - fine
 73 - Dark brown, med. clay
 74 - Grey-brown clay
 75 - Brown, med. clay
 76 - Brown, wk clay
 77 - Light brown
 78 - Brown - black clay

26N

- 79 - Dark, black - brown clay
 80 - Light - brown
 81 - Med. clay brown
 82 - Dark brown, med clay
 83 - Grey clay
 84 - Grey - brown clay
 85 - Light - brown, v. wk. clay

27N

- 86 - Org 40%, brown - grey
 87 - Brown, loamish, wk org
 88 - Org - brown
 89 - 10 "
- 90 - Brown, fine, wk clay
 91 - Brown, wk org, wk clay
 92 - Black - brown, wk clay

JULY 30, 81 SELISH MIN.

511-014-48-7

O. HODGE

BL-450M

30-25N - 200BL

30N

29+50N

ROAD

29N

28+50N

28N

27+50N

27N

26+50N

26N

25+50N

25N

511

Selish

JULY 30, 81 511-OH-48-7.

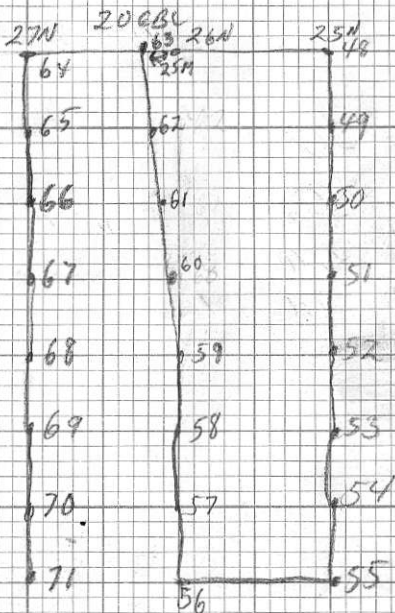
NO	ACT	DEC	DESCRIPTION			
			25N - 20 EBL			
48	4450	- 30	MED BR	STONY	SILT	SOIL
49	4450	+ 40	" "	" "	" "	" "
50	4460	+ 70	" "	" "	" "	" "
51	4480	+ 120	" "	" "	" "	" "
52	4540	+ 30	MED BR	RUSTY	STONY SILT	SOIL
53	4510	+ 20	" "	" "	" "	" "
54	4490	- 70	" "	" "	" "	" "
55	4480	+ 40	" "	" "	" "	" "

26N - 20 EBL

56	4350	+ 50	RUSTY	SILT	SOIL	
57	4360	+ 70	MED BR	STONY	SILT	SOIL
58	4380	0°	" "	" "	" "	" "
59	4400	+ 70	" "	" "	" "	" "
60	4380	+ 40	MED BR	RUSTY	STONY SILT	SOIL
61	4400	+ 70	" "	" "	" "	" "
62	4400	+ 100	MED BR	STONY	SILT	SOIL
63	4420	+ 70	" "	" RUSTY	" "	" "

D. HODGE JULY 30, 81
SGLISH MTN OH-48-7

195000



NO	ALT	DEC	DESCRIPTION			
		27N				
64	4320	+80	MED	BR	RUSTY	SILT SOIL
65	4340	+40	"	"	"	"
66	4350	-30	"	"	"	"
67	4320	-10	"	"	"	"
68	4320	-20	"	"	"	"
69	4280	00	MED BR	STONY	SILT	SOIL
70	4280	-50	"	"	"	"
71	4260	-70	"	"	"	"

SM July 25

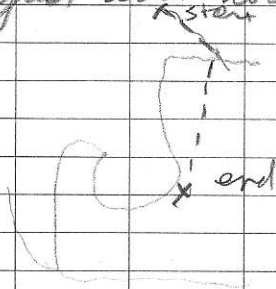
①

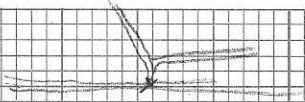
Regional Traverse on CSK
BC classsample locations plotted on
aerophoto BC 79060 No 023

511 Selkirk

511-SM-151 to 164

traverse will soon soil spacing
starts at SE end of N-S trending
road (overgrown) follows this
road to junction w/ E-W trending
road. take off from road north-
ward to southern most ditch
to just east loop in road





x 151

x 152
x 153

x 154
x 155

x 156

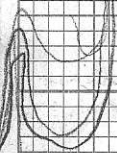
x 157
x 158

159

x 160
x 161

x 162 x 163 x 164

upper travel



July 25/81

SM

(2)

151 - light brown soil 5% clay 10%
(50m) organic 60% silt 15% pebbles
10% sand B hor.

152 - brown soil 5% clay 5% pebbles
(100m) 80% silt 10% sand B hor.

153 - o/c. ferruginous A11 with
(112m) chlorite fragments (argilla) +
hematite frag. 1-8 mm in
long axes

154 - soil brown 5% clay 5% sand
(150m) 5% pebbles 85% silt

155 - andesite tuff highly siliceous
(160m) w Qm

156 - grey silty soil 90% silt
(200m) 10% sand + pebbles

157 - lt brown soil 20% org
(290m) 80% silt

158 - lapilli tuff pow green with
(270m) wispy chlorite + hematite frag
in the silty matrix outcrop
old road.

159 - mod altered dacite porphyry
(300m) w clay + etc phenocrysts cut

by quartz - epidote veins
1 cm wide

160 - brown soil 80% soil
(300m) 20% sand & pebbles.

161 - andesite porphyry $\frac{1}{2}$ in
(330m) sand.

162 - brown soil 1-2% pebbles
(350m) V silt

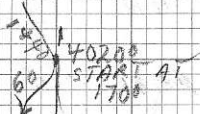
Trend to S (along RW soil line)

163 - West end of trend

078/44 SE good bedding grades
well green fine gr. buff to
logilla buff

164 Centre of trend moderately
altered and site buff -
in ep + ca.

JULY 25, 81 SSE 48th MIN.
 D.H. 4020 FT ELEV CONTOUR 15,000



- 1
- 2
- 3
- 4
- 5
- 6
- 7
- 8
- 9
- 10
- 11
- 12
- 13
- 14
- 15
- 16 (A)

- (A)
- 17
- 18 + 19
- 20
- 21
- 22
- 23
- 24
- 25
- 26
- 27 - 1200 ft

511
 Selish

ROAD
 40

GEOLOGY

- STREAM - VARIED FLOAT - MANY
HEMATIZED ROCKS - BRECCIAS,
TUFS ETC., ALSO ANDESITIC
MATERIAL, RHYOLITICS ETC.
- VERY WIDE RANGE
- 1 - HEMATIZED - TUFF MATERIAL - ASH
FRAGMENTAL - UP TO 1 CM FINE MATRIX
 - 2 - MUCH LIKE 1 - BUT MORE
BRECCIATED AND OR ANHYDROUS
 - 3 - AS ABOVE
 - 4 - MIXED FLOAT - NO OYTCRUD
- SOME LIMESTONE
- SOME ANDESITIC, HIGHLY
CHLORITIZED FLOAT
- SOME TUFF MATERIAL
 - 5 - L - LIMESTONE MATRIX W VOLCANIC FRAG
MATERIAL - TUFF F-LIMEY GRIT
 - 6 - ✓ - LIKE 5 - LIGHT
GREEN INCLUSIONS - ROUNDED
- NOT EPIDOTE
- LIKE 5 BUT FINER
 - 7 - JASPER FLOAT - SMALL
 - 8 - MUCH LIKE 2
HEMATIZED VOLCANIC BRECCIA
 - 9 - SAMPLE DN-15 - SILICIOUS
WEAK PYRITE, MOD
CHLORITE - ALTERED RHYOLITE
 - 10 - ANDESITE - MOD CHLOR
WEAK PYRITE
 - 11 - ✓ - LT GR. TUFF; SMALL FRAG.

JULY 25, 81

SEC 1811 NW

STRCAM
1

A
10
11

2

12

3

13

FRONT

14

15

16

4

17

5

18 19, 20-21

6

1200

7

8

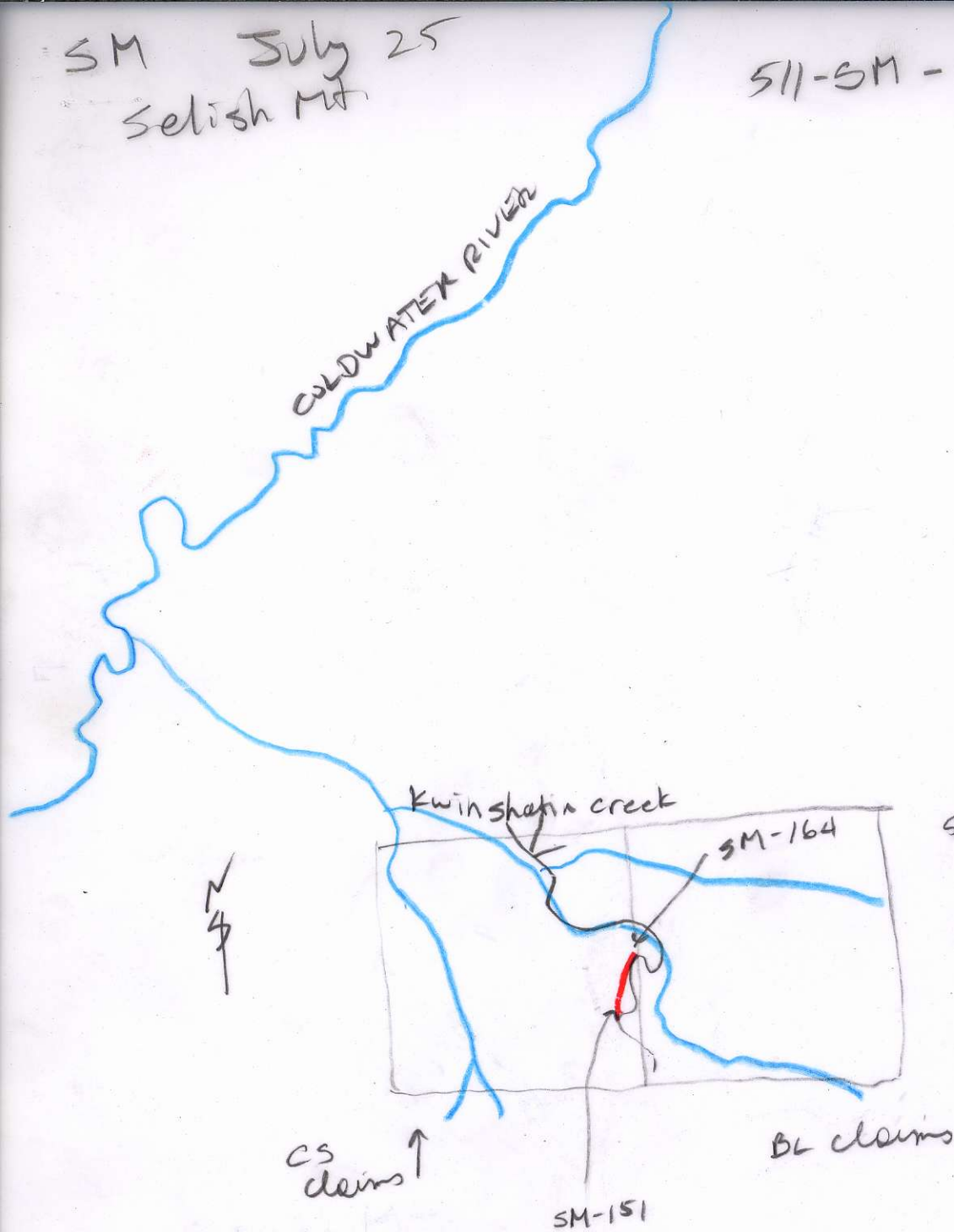
9

A 27

- 12 - SAMPLE 19 - ANDESITE
AS DESCRIBED PREVIOUSLY
IN SOILS
- 13 - LIKE 9, HEMATITIC - SILICIOUS
CHLORITIC AMYGOULES - (BRECCIA)?
LAPILLI LIGHT GREEN BUT RHYOLITE
- 14 - ASH LAPILLI - RHYO-DASTIC W
QUARTZ - FGLD? FILLED
AMYGOULES + BLACK
IRREGULAR PIECES - HARD BRECCIA
SOME HEMATITIC INTRUSIONS
- 15 - HEMATITIC BRECCIA
- TUFF MAT. - H.S.
- 16 - PALE GR TUFF, EPIDOTIZED
W HEMATITIC INTRUSIONS
- 17 - HEMATIZED VOLCANIC
TASITIC
MOD CHLORITIC INCLUSIONS +
DARKER HEMATIZED INCL.
- 18 - APPROX LAPILLI. PALE GR
EPIDOTIZED W LIGHTER
INCLUSIONS
- 19 - HEMATIZED TUFF - BRECCIA
W GREEN INCLUSIONS +
WHITE INCL.
- 20 - LIGHT GR TUFF - LAPILLI
W WHITE SMALL INCLUSIONS
FINE GR MOD + CRYSTAL
FRAG < 1cm, CHLORITIC WISPS

SM July 25
Selish Mt.

SM - 151 to 164



50 m soil sample spacing
rocks where appropriate

1:50,000

airphoto
BC 79060 No 023

SM
July 24/81

CS
chain

BL
chain

773
775
777
774
772
779
780
781
778
769
777
782
783
770
151
152
153
154
155
156
157
158
159
160
161
162
163
164
165
166
167
168
169
170
171
172
173
174
175
176
177
178
179
180
181
182
183
184
185
186
187
188
189
190
191
192
193
194
195
196
197
198
199
200
201
202
203
204
205
206
207
208
209
210
211
212
213
214
215
216
217
218
219
220
221
222
223
224
225
226
227
228
229
230
231
232
233
234
235
236
237
238
239
240
241
242
243
244
245
246
247
248
249
250
251
252
253
254
255
256
257
258
259
260
261
262
263
264
265
266
267
268
269
270
271
272
273
274
275
276
277
278
279
280
281
282
283
284
285
286
287
288
289
290
291
292
293
294
295
296
297
298
299
300

CS chain

BL chain

N
↓

Selkirk Mt.
regional traverse

CS
N