

841858

ASSESSMENT REPORT ON GEOLOGY AND GEOCHEMISTRY
OF RASTUS AND TOBY CLAIMS NEAR
MERRITT, BRITISH COLUMBIA

NICOLA MINING DIVISION

NTS 92 I 2

LAT $50^{\circ} 10'$ LONG $120^{\circ} 54'$

CHEVRON STANDARD LTD

BRADFORD J. COOKE

JULY 8, 1982

TABLE OF CONTENTS

	PAGE
INTRODUCTION	1
GEOLOGY	2
GEOCHEMISTRY	3
CONCLUSIONS	4
COST STATEMENT	5
FIGURE 1	6
FIGURE 2	7
APPENDIX 1	8
AUTHORS QUALIFICATIONS	9

A circular arrow diagram is drawn between the 'CONCLUSIONS' and 'COST STATEMENT' entries. The arrow starts at the 'CONCLUSIONS' entry, curves downwards and to the right, then upwards and to the left, ending at the 'COST STATEMENT' entry. This suggests a relationship or flow between these two sections.

INTRODUCTION

Rastus and Tobay claims are located south of Craigmount Mine approximately 10 km west of Merritt, B.C. Truck access is available via Highway 8 west from Merritt and the Promontory Hills road north to the claims (Figure 1).

Two geophysical anomalies detected during a helicopter-borne electromagnetic survey prompted staking and recording of the claims on July 24 and August 14 1981, respectively. Chevron Standard Ltd. of Vancouver, B.C. currently owns and operates Rastus and Tobay claims.

Seven mandays were spent on the claims in geological mapping and geochemical sampling. Mapping on the scale of 1:22,000 covered the total claims area, 24 sq km. Sampling along 6 lines and sporadic outcrops totalled 179 soils and 33 rocks (Figure 2).

GEOLOGY

Cretaceous Kingvale Group andesite flows and breccias form a ridge trending NNE across the claims. The rocks are greyish green to red and porphyritic with hornblende and plagioclase phenocrysts up to 3mm long in an aphanitic matrix. Usually jointed, the flows are usually fissile and a thin unit of tuff breccia does occur. Alteration to chlorite or hematite may be a syndepositional feature of subaqueous or subaerial weathering, respectively. No mineralization was noted.

GEOCHEMISTRY

Soils were sampled at the B horizon, identified as a light grey-brown, clay-silt rich zone at a depth of about 30 cm. Rocks were sampled as fresh grabs from outcrop. Only 3 Cu anomalies were located in soils and they do not cluster. All other values in Cu, Zn, Pb, Ag and Ba are considered background on the basis of data plotted on probability paper.

CONCLUSIONS

Geological mapping indicates that the claims are solely underlain by Cretaceous Kingsvale Group andesite flows and breccias.

Geochemical sampling of soils and rocks located only 3 Cu anomalies, the remaining values in Cu, Zn, Pb, Ag and Ba being background ie below threshold.

Expenditures of \$3276.69 are sufficient to maintain the claims in good standing for another year upon their anniversary date, August 14, 1982.

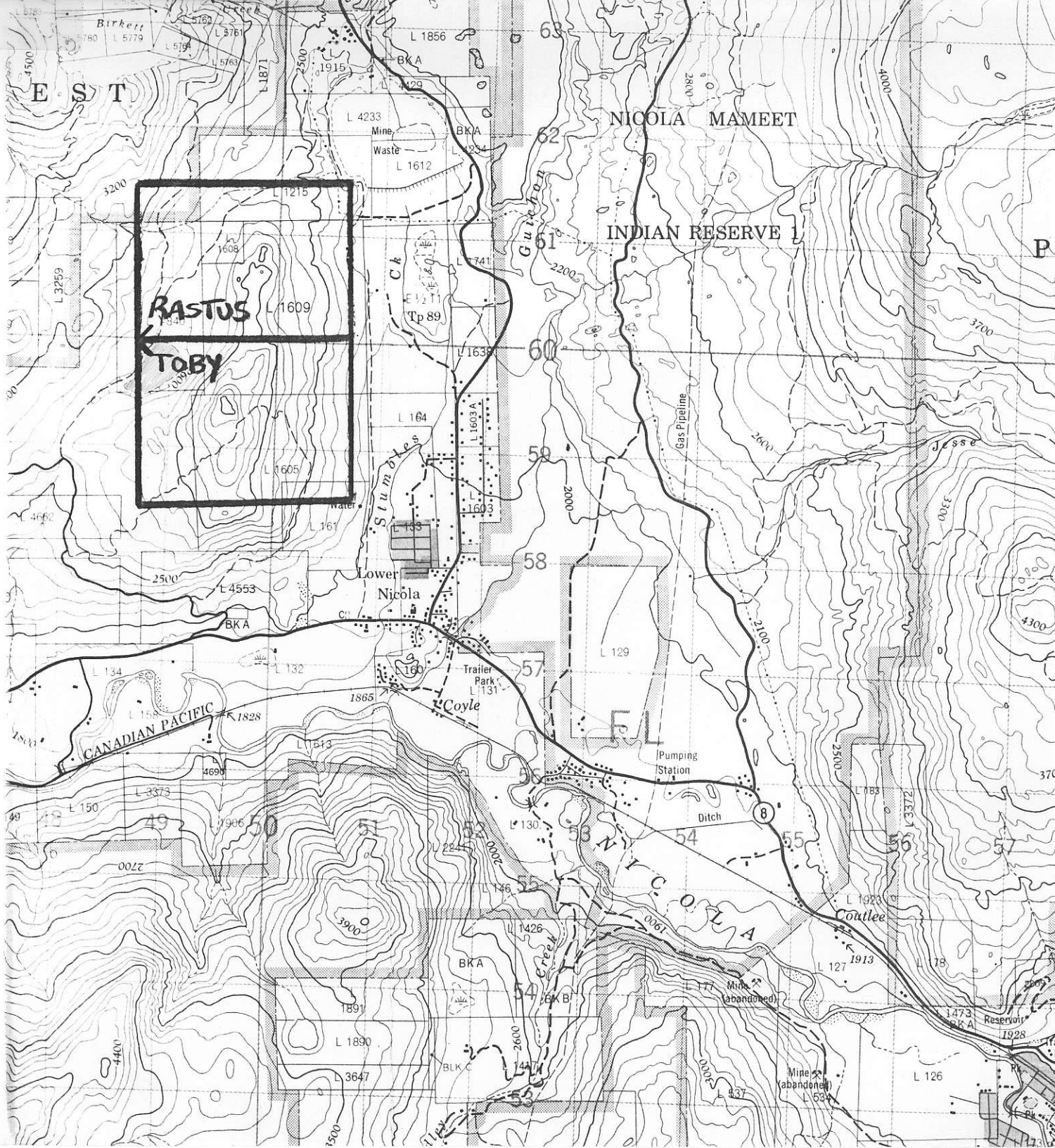
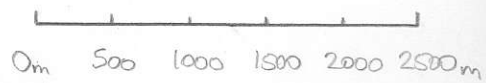


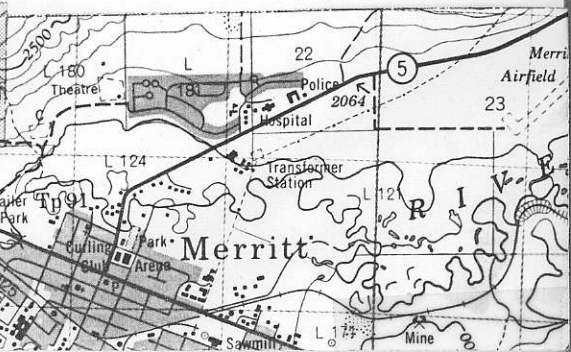
FIGURE 1 INDEX MAP



SCALE
1:50,000



NTS 92 I 2





SCALE

0m 200 400 600 800 1000m

CRAIGMONT
MINE
TAILINGS

LEGEND

- 6 Cretaceous Kingsvale Group
- a Andesite Breccia
- b Andesite Flow

SYMBOLS

- - - Road
- Legal Corner Post
- Outcrop
- Contact
- ∕∕ Jointing
- 140 • RW36 Copper Value, Sample Number

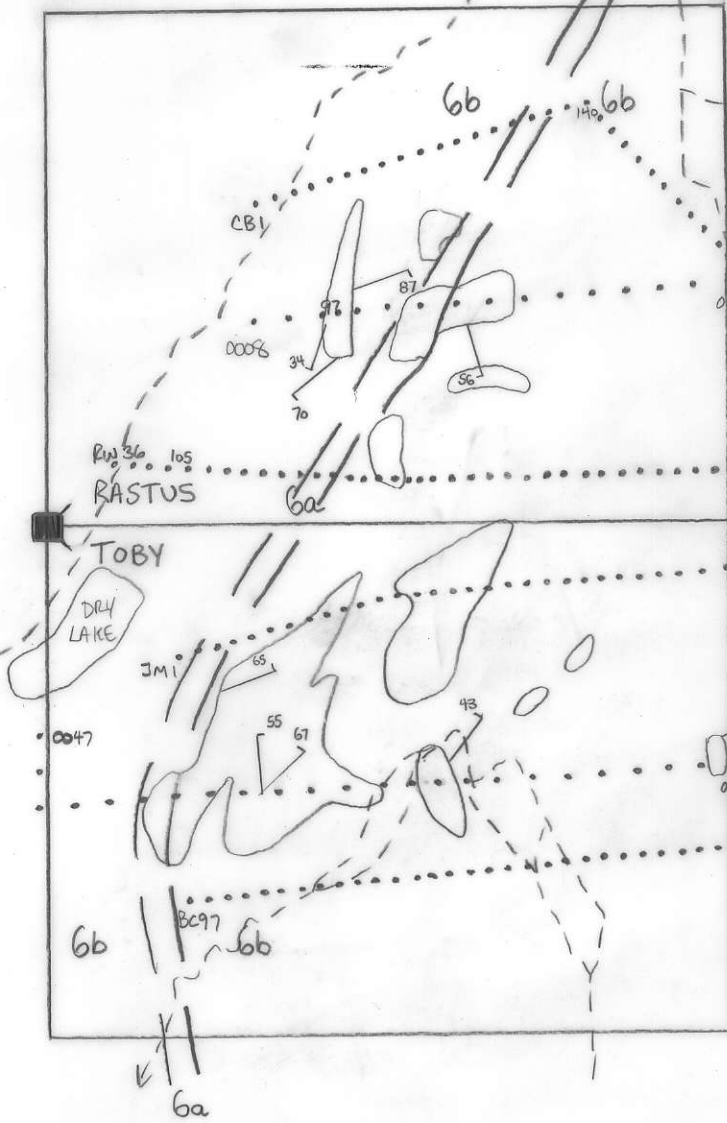


FIGURE 2 GEOLOGY AND GEOCHEMISTRY