

PIPSEUL
INDIAN
RESERVE

Gas Pipeline

7
8
9

L 583
L 1182
787
3277
L 5470
L 5997

3194
L 3249
L 57

L 382
3228
Trans Station

L 749

2 Lines

L 668 A

3888

L 4680

L 4681

L 1576

L 1577

Quenville

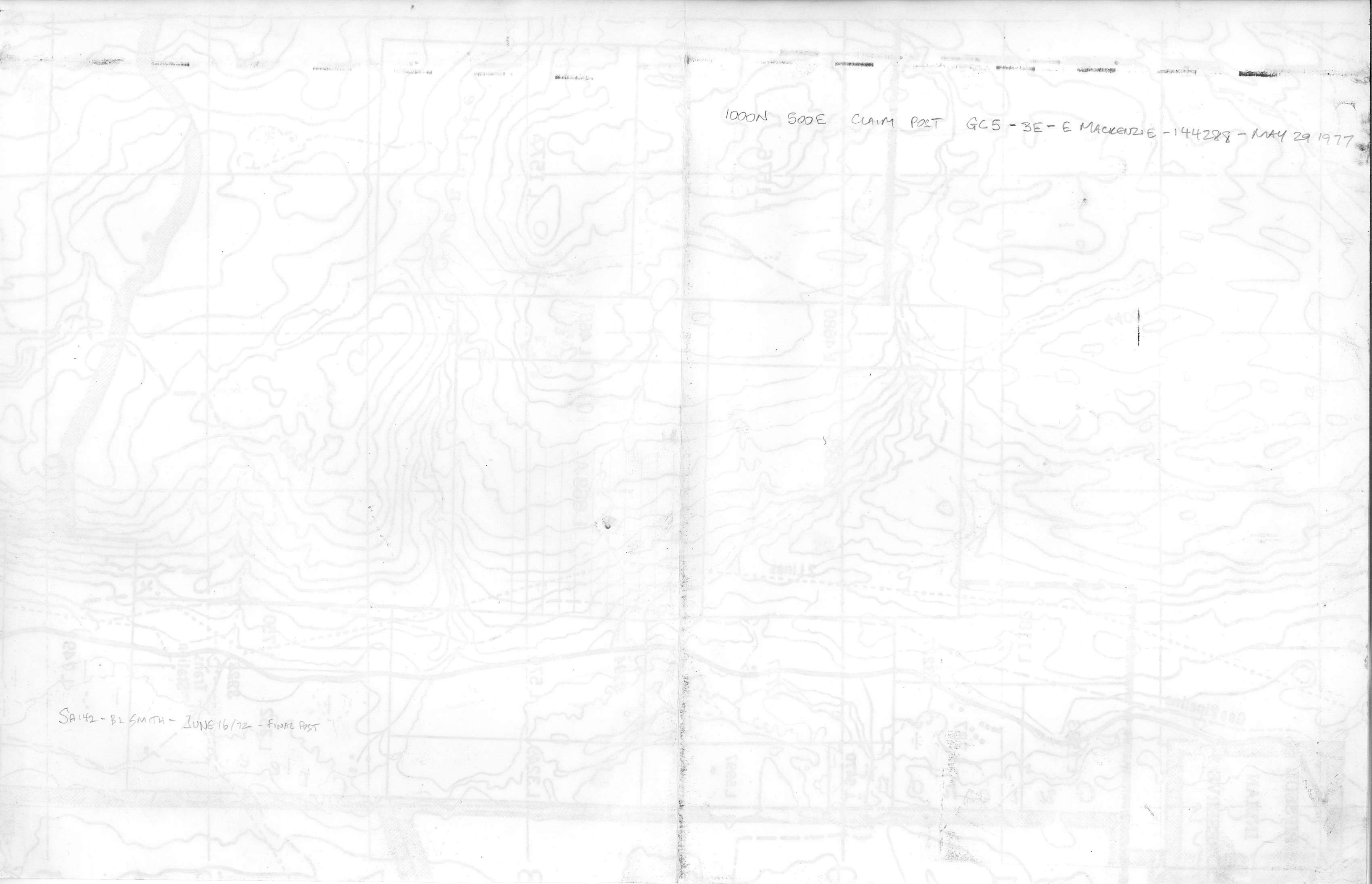
4200

750

841843
Horace
m-511

1000N 500E CLAIM POST GC5-3E-E MACKENZIE -144288 - MAY 29 1977

SA142 - BL SMITH - JUNE 16/72 - FINAL POST



PIPSEUL

INDIAN

RESERVE

Gas Pipelines

L 1583

L 1182

787

3277

L 5470

888

L 4680

L 5997

2 Lines

L 1576

3194

L 668 A

L 4681

L 3249

L 576

L 1577

Queenville

L 382

750

200

3228

Trans Station

L 749