

GEOLOGICAL--GEOPHYSICAL REPORT ON THE
CHINA CREEK URANIUM PROPERTY

841757

NTS: 82 F/4 (East Half)

Summary:

On June 17, 1976 George Laforme and Roy King were shown a uranium occurrence on the S side of China Creek, 7 miles SSW of Castlegar, by George Addie (B. C. Dept. of Mine). The showing is covered by a 1 unit claim called U₃. This plus a 4 unit claim (U₃₀₈), located immediately N of U₃, are owned by Peter Leontowicz of New Denver, B. C.

The showing is exposed by a small pit in a leucocratic coarse grained band within a granitic gneiss. Similar bands, lithologically, averaging about 5' thick alternate with foliated amphibolite bands of similar thickness. The general trend of the banding is NE with a gentle dip to the NW in the area of the showing. Rock samples from this pit returned 1600 and 1900 ppm U and uraninite is probably the main U bearing mineral. A float boulder which obviously broke away from a cliff above the main showing gave 1100 ppm U. A third zone with high radioactivity about 300' from the pit, gave 130 ppm U. One sample with similar radioactivity only had 40 ppm U. A sample of rock between the radioactive zones contained 2 ppm U.

On July 12, 1976 the writer accompanied by Peter Leontowicz visited the property and examined the showings referred to above as well as the known areas of radioactivity on the U₃₀₈ claim. During this visit it was learned that on June 17 the property was optioned to George MacMillan of Toronto. His option extends until August 17 and is continued, for one year, by payment of \$900.00 on or before August 17. MacMillan has suggested to Leontowicz that he won't make the August 17 payment thus a third party can be sought. However, this is not clarified in writing and Leontowicz suggested we might call MacMillan to arrange a joint venture with him. In addition it was learned that detailed radiometric prospecting over the claim area in 1963 by Norex Resources was followed by 2000' of diamond drilling in 5 holes. No radioactive zones were intersected.

Airborne Reconnaissance:

In order to quickly evaluate the general area around China Creek a helicopter was fitted with our GAM-1 and GSA 61. The attached sketch map shows geology of the area and flight lines. A graphic record of scintillometer response is available in the files.

Emphasis was placed on map unit A which is the granitic gneiss host of the China Creek mineralization. Average response for these rocks in China Creek area is of the order 1500 cps. A maximum value of 2400 cps was obtained at low elevation immediately over the showings.

South of China Creek the average response drops to 900 - 1000 cps in the gneiss. Particular attention was paid to contacts between gneiss and Nelson granitic rocks. In most cases the granites were less radioactive than the gneiss but the contact areas, on the gneiss side, were somewhat upgraded relative to centers of the gneiss complex.

One particularly interesting area radiometrically (#35 on sketch) was examined. Here a peak value of 2200 cps was obtained from the air. An area about 150' x 200' was prospected with a BG1 -SL hand scintillometer. Values in the hottest part of this area, which is a leucocratic segregation in the gneiss, were 300 cps. This is about 6 x background for surrounding rocks. A rock chip sample contained only 2 ppm U, however, thus radioactivity must be unusual K or Th.

Figures:

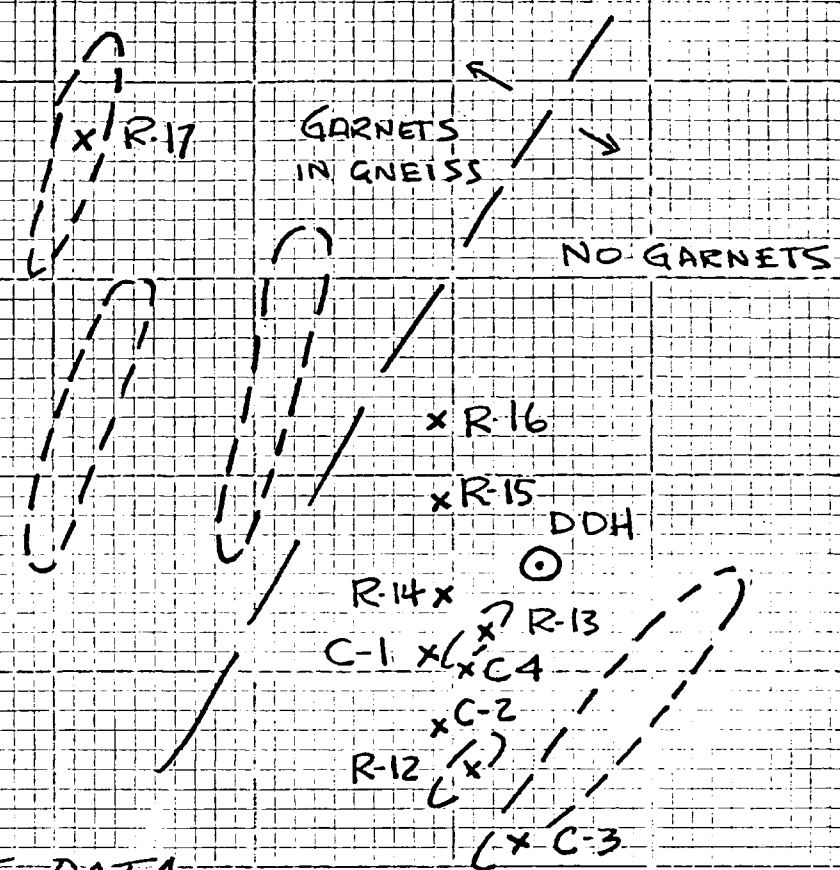
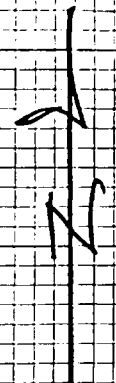
Attached are:

- 1) A map showing location of the claims with airborne fiducial points and
- 2) China Creek. A Sketch of the China Creek claims with sample sites and outcrops marked.



J. W. SIMPSON

SCALE 1" = 50' (approx)



SAMPLE DATA

#	C.P.S.	ROCK TYPE	U (ppm)
C-1	2000	pegmatite	390
2	300	"	13
3	200	"	4
4	—	amphibolite	1
R-12	300	"	2
13	2000	pegmatite	1600
14	1500	"	1900
15	1200	"	40
16	10000	"	1100
17	1700	"	130

CHEVRON STANDARD LTD.

CHINA CREEK PROPERTY
(P. LEONTOWICZ - OWNER)

ROCK SAMPLE PLAN

"U-3" SHOWING

OCT 76

JWS.

CHINA CR. 445
— JULY 12/76.

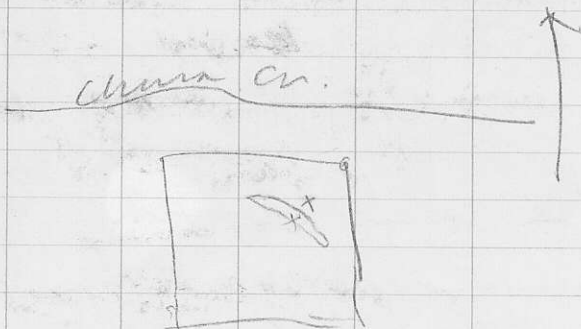
w. Peter Leontowicz - BGS-1
climbed up gas line on S
side of China Cr to old
dirt road then up ~
3/4 mi past switch backs
to blaze on tree (right
hand side) very overgrown
old trail ~ 200' to
clearing w. best pit
up to 4000 cps in
c. g. white gneiss w.
smoky qtz. minor Fe
stain especially on fractures
pit area is 10' x 10' w
any bit of
bedrock exposed.
along regional strike
o/b + talus in 2-3x
regional background of
200 cps.

"zone" might be
200' long & 5' thick

estimate of thickness is
based on average thickness
of bands in general
area.

Traversed up hill to
cliff area. old drill
hole (N.Q.) said to
be 500' deep.

#



4 holes drilled by
Novex $\pm 2000'$ - core
stored @ Leontowicz

on top of cliff near drill
hole found 1 more zone
W. up to 4000 yds in
crevice but zone
was blasted & only a
few feet long.

mineralization seems to
be very lousy with
virtually nothing away
from the "good" stuff

George Macmillan has
option till Aug 18/76
When 900⁰⁰ due. "
100⁰⁰ already paid.

drill hole right on
showing got zip

U308 CLAIMS

Went to NW corner
of cbs & got 1 fracture
with up to 2000 cps.
along ~ 6" of fracture.
- everything else ~ 200 cps

Went to center part of
cbs. pegmatitic lense.
~ 25' long ± 5' thick
averages ~ 1000 cps
over background
of ~ 200 cps.

one tiny area

1" x 4" van 8000
ops. - see sample.

labelled U308

very difficult to collect
specimens; smooth
w/s.

quartz is heavily
smoked & almost
purple.

some very fine
black grains with
rusty weathering.
poss. magnetite or
uraninite.

minor aplite dykes
area is underlain by
50% pegmatite, 50%

amphibolite.

neither is much
above background
except a few rare
pods.

JULY 13

flew back → China Cr.
W, OKANAGAN. (Lee. Sexsmith)

At St John based

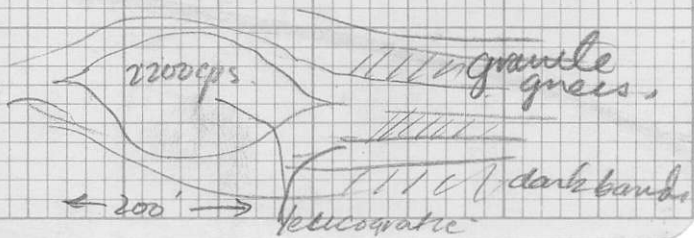
see 1" = 1 mi geol of
Trail for flight lines

[136] found & check
≈ 2200 cps. airborne
anomaly.

caused by ~~gneiss~~ foliated
granite. only gives 300
cps.

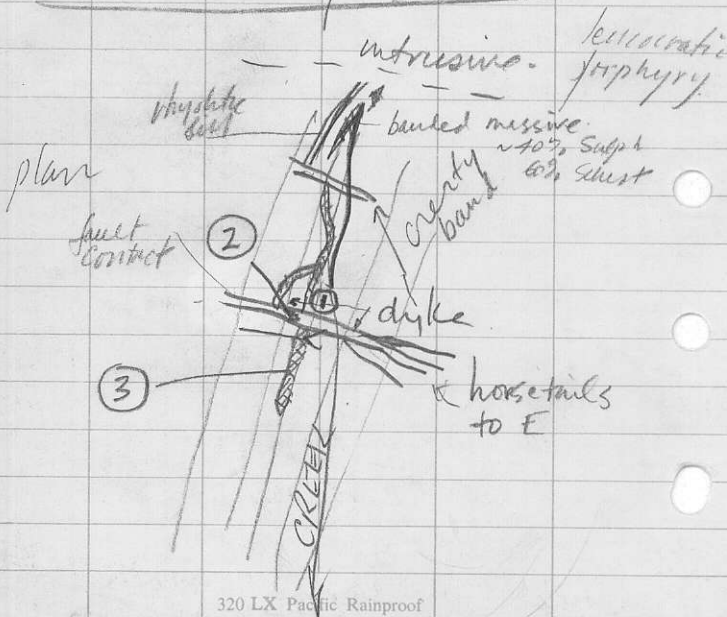
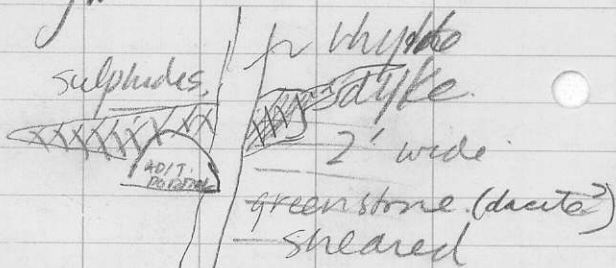
on BAS 1 / 50-60
background
2 rock samples.

area of exposure is only
150 X 150



XC - in Copper Cr. file

looking w.



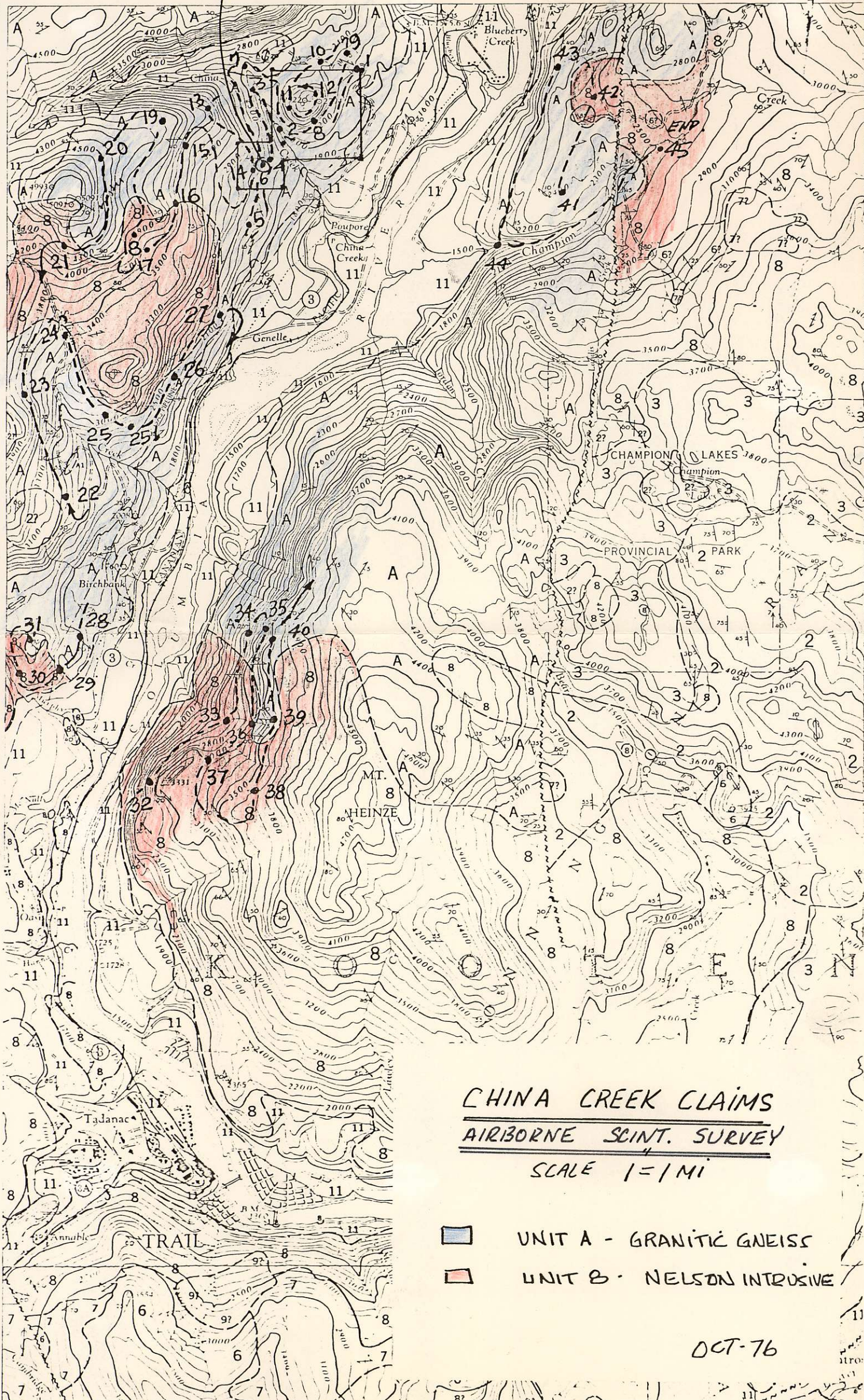


"U-3" SHOWING.



PRELIMINARY SERIES

117° 45'
49° 15'

40'



CHINA CREEK CLAIMS
AIRBORNE SCINT. SURVEY
SCALE 1" = 1 MI

-  UNIT A - GRANITIC GNEISS
-  UNIT B - NELSON INTRUSIVE

OCT-76