

(28)

JULY 8 1977

u 255

2608.8 WILMER Reg Faulkner

2611.9 HORSETHIEF CR BRIDGE

2614.6 FORSTER CR BRIDGE

2615.6 MAIN HAUL ROAD

UP HORSETHIEF CR

2618.8 TURN LEFT 90°

TOWARDS DOGLEG LAKE

2618.9 FRANCES CR BRIDGE

2620.1 TURN LEFT TO

FORSTER CR

2620.3 TURN LEFT TO

FORSTER CR

2622.0 MAIN FORSTER CR

HAUL ROAD AT

FORSTER CR BRIDGE

2622.4 TAKE LEFT FORK

2624.8 FORSTER CR BRIDGE

2629.8 MINING CLAIM POST

901158 FEB 69

2630.0 POST 491208 M JULY 23 /75

2630.2 790780 /67

2632.4 BRIDGE OUT FORD

2633.4 CR FROM LEFT SLIDE 100

2633.8 34019 (NG) MAY 25 /77

320 LX Pacific Rainproof ROSE #3 W3

841718
Horsethief

2634.9 POST 100 YDS NW

05826

STAN #6

POST NO 6E

DL PIGHIN

JAN 3/77

2636.9 POST

STAR ON
IE

2637.3 END OF ROAD

07985' LCP 100 M DUE NORTH

STAN 5 05825'

DL PIGHIN 351W JAN

STAN 6 05826

DL PIGHIN 3N 6E

BACKGROUND ON ROAD 1000 ft

2639.5 POST

STAR 07985' 05
6E

2649.6 CROSS FORSTER CR

2652.4 " " "

2655.5 HORSE THIEF CR ROAD

2657.0 FORSTER CR

2658.0 WEST SIDE ROAD

2664.8 WILMER

JULY 9 / 77

- 2687.9 HORSETHIEF CR ROAD
JUNCTION W WEST SIDE ROAD
- 2690.6 FORSTER CR ROAD TO RIGHT
- 2696.4 CROSS HORSETHIEF CR
- 2702.6 MCDONALD CR

ROAD SIGN

MCDONALD CR 14

STOCKDALE CR 17

FARNHAM CR 23

COMMANDER GLACIER 27

LAKE OF HANGING GLACIER 29

STAR BIRD GLACIER 29

(30)

JULY 10 1977

c/s

ELEV

STOCKDALE CR

AREA 4

10.00 AM ON CR. BAR 100 4840

SEDIMENT FLOAT

10.20 F.G. GR? MISCOVITE 4860

11.15 COARSE GR #1 400 4875

MIXED FLOAT 220

11.40 BI GR #2 320 4830

11.45 MIXED SED RUSTY MUS GN 4820

11.47 LEUCO GR #3 PINN SPOT 650 4820

12.20 COARSE BI GR #4 520 4720

ALL GR FLOAT 450

13.15 MOLY IN QTR FLOAT

AT CR MOUTH EAST END AREA 4

13.30 BOULDER #5 600 4525

AREA 3

14.20 CREEK S18 4525

14.45 TALUS #6 400 4550

QNZ TALUS 360

15.50 TALUS #7 400 4530

(31)

JULY 11 1977

c/s

STOCK OALE CR

AREA 3

0845 COARSE GR 350 4490

0915 " " BI 350 4505

2 FSP < 1 1/2" #8

1115 #9 M. INOR PINK FSP 400 4985

1130 #10 M. INOR F.G. LEUCO 400 4990

(33)

July 12 / 77

STAR CLAIM

2820 FT = 859.5 METERS

① EL. 2210m.

plum perhyetic Quartz ~~mountain~~
background 280 cps.

② EL 2132 m

1300% SPOT HIGH SCINTON GROUND

GL-77-C1 G HORIZON

GL-77-A1 A " ?

BACKGROUND 375 C/S

MUSCOVITE ON FR PLANES

③ 20M ESE OF ②

FR 130° 80° SW

FSP PINK (SALMON)

GL-77-S1 DK BR SILT ON ROAD

S2 BR SAND ROAD CUT

S3 BR SAND " "

S4 ^{COARSE} BR SAND " "

S5 SILTY LAYER

W ORGANICS IN TILL

{ Ph6.5 S6 SILT FROM CREEK
FLAGGING MARKED H126
BAD LK ³⁰⁰ PACIFIC ²⁰⁰ RAILROAD ¹⁰⁰ C/S 310

66-77-57 SIXTY SAND IN TILL

S8 SANDY + MINOR ORGANIC
SILT FROM SAME CR

AS 56 ALSO W8

S9 TOP SAND WATER DEPOSITED
ON CAT ROAD - TILL

W10 MARKED HH 27

S10 FINE GREY DIRT
FROM DRAINAGE AREA
NOWATER ON SURFACE

S11 B HORIZON? IN TILL

S12 SILT FROM ABOVE ROAD

IN CREEK HH 251

S13 SILT

(33)

JULY 14 1977

STAR
CLAIM

WANDERED UPPER CIRQUE ON

FLY CAMP CR

2210 M (ALT)

2220 M PHOTO

MINOR CHL
MAD TO F.G. 81 GR.

FR110 DIP 60° S

W 000 FSP TO 1"

FR048 DIP VERT

BACKGROUND

300 c/s

MINOR FR

125° DIP 60° N

② CLAIM POST

1.P ANNETTE 17018

S 58W TO NO2 325 c/s

JULY 1970

F.P ANNETTE 15016

FR. 360 DIP 40 W

MINOR Py - MUSCOVITE

ON FR

③ GL-77-R4 GRPPY 1" FSP

④ ACC MAG GL-77-R5 330°/2320

⑤ POST ^{STAR} 4ESS 2370 M 330c/s

⑥ FG. 81 GR 2330

FR 300 DIP 55° SW

FR 048 DIP 80 SE

GL-77-R6

ACC MAG LX Pacific Rainproof

BACKGROUND 380 c/s

⑦

GL-77-R7 350 c/s

GL-77-S14

2290 M

GL-77-W14

⑧

GL-77-TR8 350 c/s

⑨

GL-77-W15

GL-77-S15 325 c/s

1750 M

⑩

GL-77-S16

AT

GL-77-W16

VALLEY FLOOR P. 1600 M

⑪

GL-77-S17

AT

FORSTER CR

BRIDGE

3A

JULY 15, 1977

STAR
CLAIM

① GL-77-518

BLACK SAND

AT UPPER FORSTER CR. BRIDGE

② GL-77-519

BLACK SAND FROM

FORSTER CR JUST

DOWNSTREAM FROM LCP STAR

CLAIM

③ GL-77-520

BLACK SAND FROM

FORSTER CR UPSTREAM

④ GL-77-521

BLACK SAND

FORSTER CR.

⑤ GL-77-522

BLACK SAND

FORSTER CR

⑥ GL-77-523

BLACK SAND

FORSTER CR

⑦ ^{SERENA} GL-77-524

SOIL + TALUS FINES

GL-77-P9

HEAD OF WELSH CR.

(8) GL-77-525 FROM CR ^{2130 M}
FLOWING NORTHERLY
GL-77-R10

F.G. GR C/S 210
WEST GL-77-526 BASALT
FROM CR FLOWING NORTHERLY
GL-77-527 CLAY
FROM CR. GREY IN COLOR
FLOWING EASTERLY
GL-77-W27

35

JULY 16
EASTEND CR

STAR

2000 M CENTRAL MORaine

420 C/S COARSE MONONITE

FLOAT GL-77-R11

GL-77-528 ROCK FLOUR
FROM CENTRAL MORaine

GL-77-529 ROCK FLOUR
FROM WEST MORaine

GL-77-530 RUSTY
DEPOSIT IN DRAINAGE
FROM UNDER WEST
MORaine

GL-77-W30 FROM
SAME DRAINAGE

GL-77-531 400 C/S
FOOT OF TALUS
WEST SIDE OF VALLEY

SERENA CLAIM PHOTO 7537 #090
MORaine LAKE ON NORTH FORK

KERR CR.

① 7700' QMZ FSP < 2" $\frac{1}{3}$ 450
FR 113° DIP 75° S 12"-18"

DECEASED ^{AL}FR PLANE MUSCOVITE

PK F₂P QTZ PY
FR 005 60 E 2'-10'

GL-77-R12

202X Pacific Raincoat

②

400 C/S

7736

③

GL-77-532

ROCK FLOUR

425 C/S

8000

④

1000 - 1500 C/S $\leq 2' \times 250'$

COARSE QMZ Δ ELEV 80' 7900

HAIRLINE FR 005° 10 WEST

⑤

GL-77 R13

7800

ADJACENT TO 1500 C/S
AUTUNITE?

GL-77 R14

LOOSE WITHIN FISSURE

1500 C/S

RARE EARTH?

ALTERED QMZ

PK FSP

GL-77- R13

GAVE TO LARRY DEKKER

36

PHOTO SC 7547 126
196

JULY 17 1977

HORSE THIEF CR

GEO PHYSICAL ANOMALY #1 4965'

- ① RF-77-132SS FR 118° 160° S
GL-77-R15 GR 400C/S
- ② RF 77-133SS 400 4880'
- ③ RF-77-134SS 440 4865
GL-77-R16
- ④ RF-77-547 440 4870
- ⑤ GL-77-R17 1500 4910
GL-77-R17 A COUNTRY ROCK
FOR 50 BACKGROUND 500
- ⑥ RF-77 SS 135 460 5040
- ⑦ RF-77 SS 136 450 4970
GL-77-R18 PK FSP
FR 118° 60° S FILLED
WITH BLACK MATERIAL $\frac{1}{4}$ "
- ⑧ RF-77-548 GR
ALDER SLIDE 440 4750
- ⑨ RF-77-SS 137 400 4800
- ⑩ GL-77-R19 500 4730

HEAVY TALUS

GL-77-R17 BI ALTERED TO CLAY?

GL-77-R18 - CHERT

(37)

JULY 18, 1977

PHOTO

BC7547 # 199

HORSE THIEF CREEK

GEO PHYSICAL ANOMALY #2

- ① RF-77-SS138 ^(HEAVY) TALUS 550 4520
GL-77-R20 QMZ 800
- ② RF-77-SS139 460 4620
SCATTERED TALUS.
- ③ RF-77-SS140 440 4660
TALUS PP/QMZ + MINOR GN
- ④ RF-77-SS141 350 4650
EDGE OF TALUS
GL-77-R21 COARSE QMZ
- ⑤ RF-77-549 400
FLOAT TRANSITION SED QMZ 4650
APLITE
PK QMZ 500
- ⑥ GL-77-R22 ^{RICH IN} SILICA 600 4650
PK-QMZ 450
RF-77-SS142 PK FSP
10% SED 25% LEUCO QMZ
- ⑦ GL-77-R23 PYRRHOTITE ON SED FLOAT
RF-77-SS143 310 4660
- ⑧ RF-77-SS144 190 4575
GL-77-R24 CARBONACEOUS PHYLITE
- 90% SED

(38)

JULY 19 1977

HORSE THIEF CR
 GEOPHYSICAL ANOMALY # 1
 FROM SHOULDER AT 4965'
 BETWEEN HORSE THIEF CR
 AND STOKROALE CR. ON
 NORTH SIDE, TO THE WEST
 TOWARDS SERENA CR.

① RF-77-55145 440 4900

② RF-77-55146 420 4800

③ RF-77-55147 420 4710

Q M Z LEUCO - BIOTITE

④ RF-77-55148 420 4625

BOTTOM OF HEAVY TALUS

RF-77-550

PHOTO 7537#090
SERENA CLAIM
JULY 20 1977

C/S

ELEV

(59)
SOUTH FORK (IRISH) KERR CR. AT
HEAD OF CIRQUE

① GL-77-533
PPY QMZ 400 8150

MUSCOVITE + PY ON

SOME FR PLANES

FR ~ 110° DIP 85 S ≥ 2"

040° DIP 80 W ≥ 2"

PK FSP ≤ 2" SOME ZONING

MINOR APLITE DYKES ≤ 12"

② RF-77-⁵⁵149 400 8050

③ RF-77-⁵⁵150 420 8090

025 FROM CLAIM POST 3W ON

④ GL-77-R25 720 7900

N/S FR 12" EXTENDS

3' TO EAST ALONG

SLICKENSIDED 110° FR

BACKGROUND 460

⑤ RF-77-55151 460 7975

⑥ RF-77-55152 600 7800

GL-77-R26 PPY QMZ

50' TO WEST ≤ 900

⑦ TALS 950 7930

C/S ELEV

4 CLIMBERS LED BY ARMOR LARSON

⑧ RF-77 - SS153 840 7960

GL-77 - R27 1600 8040

FLOAT QM2.

RF-77 - SS154

RF-77 - SS155 1200 7945

⑨ RF-77 - SS156

GL-77 - R28 2000 7660

FLOAT (IN PLACE)

⑩ JULY 21 1977

090

ABOVE (IRISH) KERR LAKE

⑩ GL-77-29A^{R REP} SAMPLE 750 7965

FLOAT BI RICH 2500 7850

⑪ GL-77-R30 ≤ 1200 7675

FLOAT. DIFFERENTIATE, 30" x 12"

BI RICH 12' x 6' x 6' 930 ALONG 110°

PRY QM₂ 90" x 6' x 6' 50

FLAT LYING PEG ≤ 1"

⑨ BI RICH^{GL-77} R28 ≤ 2000 7400'
≥ 6" THICK.

⑫ RF-77-55157 450 7470

⑬ RF-77-55158 450 7450

⑭ GL-77-R29 1700 7165

AT EAST
END OF
UPPER
SMALL
LAKE(GL-77-R30 800-1200 7165
CHIP ACROSS 2'

OUTCROP 50' x 15' ACROSS

FR 110° 80°N SPACED 1'-6"

1 FR QM₂ FILLED ≤ 1"

9

110°



PPY Q MZ

PPY Q MZ

BIOTITE RICH
QBI DIORITE

700

800

3

2000 c/s

1

2

GL-77

R28

600

1

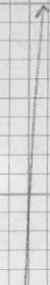
20

DIRY

TALUS

PEG 1.5"

1000 c/s



1

1

2

3

4

5

6

7

8

9

10

11

12

13

14

15

16

17

18

19

20

21

22

23

24

25

26

27

28

29

30

31

32

33

34

35

36

37

38

39

40

41

42

43

44

45

46

47

48

49

50

51

52

53

54

55

56

57

58

59

60

61

62

63

64

65

66

67

68

69

70

71

72

73

74

75

76

77

78

79

80

81

82

83

84

85

86

87

88

89

90

91

92

93

94

95

96

97

98

99

100

(41) SERENA CLAIM
JULY 22 1977

PHOTO
7537 # 090

LANDED ON TALUS FRAGMENT
BELOW MORaine LAKE

PPY QMZ °/S ELEV
500 6900

- ① SPOT HIGHS TO 800
- ① GL-77-TR31 900 7040
FLOAT 4'x4'x3' BI. RICH
RF-77-55159
- ② GL-77-R32 800 7065
BI. RICH 3'x20'
~ 110°
- FR. 110° SUBVERTICAL
110° DIP 60°N
40° SUBVERTICAL
- ③ RF-77-55160 7165
- ④ RF-77-55161 7250
- ⑤ RF-77-55162 7365
- ⑥ RF-77-55163 7420

JULY 22/77

NORTH OF MORaine LAKE

(A) FR 336⁰ SUBVERT 950 7475

(B) 005 SUBVERT 2' x 6' 1650 7400
GL-77-R33

(C) 005 SUBVERT ENRICHED BI. 1000 7420
GL-77-R34

ACROSS A-B-C = 150'

BACKGROUND 550 c/s

~10% ≥ 800 TO 1650 ON SURFACE

42

JULY 23 1977

KERR LAKE

BLASTING SITE (14)

I 6 STICKS 70%
II 9 " 70%

FROM (14)
JULY 21

GL-77-R35

CHIPS AFTER BLAST #1

GL-77-R36 1200

GOUGE? AFTER BLAST #2

GL-77-R37

REP SAMPLE

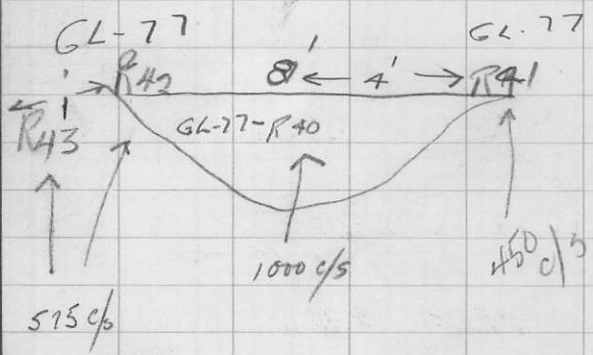
AT MORAIN LAKE

GL-77-R39

(4)
JULY 16

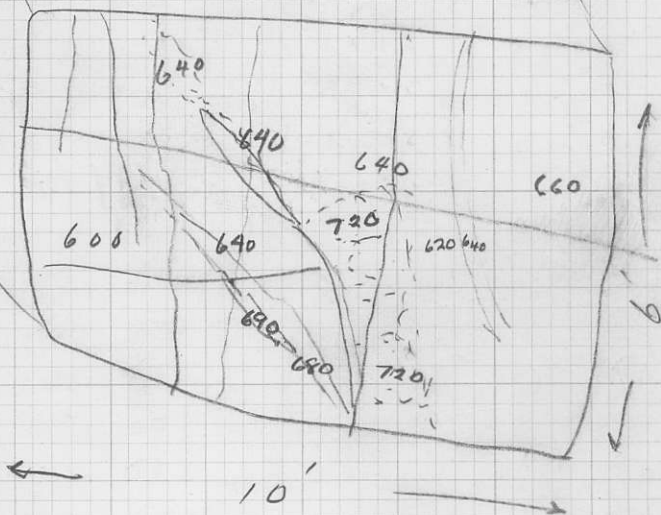
GOUGE AFTER NO. BLAST

1500



Q M Z BOULDER AT KERR LAKE

STREAKS OF BIOTITL



4' FROM BOULDER S20 c/s

GL-77-R38

REP SAMPLE
FROM ABOVE

43

45

ELEV
METERS

JULY 24 1977

STAR CLAIM

SOIL SAMPLING TRAVERSE

SAMPLES EVERY 50 METERS

①	RF-77 - S51	EAST END CREEK	1885
②	-SS 164	300	1900
③	SS 165	240	1900
④	S 52	200	1895
⑤	SS 166	200	1895
⑥	S 53	200	1890
⑦	SS 167	230	1890
⑧	SS 168	200	1890
⑨	SS 169	220	1885
⑩	S 54	200	1890
⑪	SS 170	220	1880
⑫	SS 171	200	1880
	S-55	200	
⑬	SS 172	200	1880
⑭	SS 173	220	1870
⑮	SS 174	250	1875
⑯	SS 175	300	1880
⑰	SS 176	270	1880
⑱	SS 177	260	1880
⑲	SS 178	280	1895
	OUT CROP QMZ	320	

c/s ELEV
METERS

(20) RF-77-SS 179 290 1890

(21) -SS 180 250 1880

(22) -SS 181 320 1880

(23) -SS 182 300 1870

(24) -SS 183 320 1830

CL-77-R44 800 1830

(25) RF-77-SS 184 250 1830

(26) -SS 185 280 1835

(27) -SS 186 260 1840

4A

JULY 25 1977

C/S

ELEV

STAR CLAIM

METERS

CONTINUATION OF
SOIL SAMPLING TRAVERSE

(28) RF-77-SS187 260 1780

PPY QMZ LEUCO

(29) RF-77-SS188 260 1780

(30) -SS189 260 1780

(31) -SS190 220 1785

(32) -SS191 220 1775

END OF ALDER SLIDE

(33) -SS192 240 1780

LEUCO SPARSE PPY MED QMZ BI.
ROCK CHIP (33)

(34) RF-77-SS193 200 1780

(35) -SS194 200 1740

(36) -SS195 220 1690

(37) -SS196 250 1665

(38) -SS197 210 1660

(39) -SS198 300 1645

(40) -SS199 300 1680

(41) -SS200 260 1670

(42) -SS201 260 1670

(43) S 56 220 1660

D R Y C R E E K

C/S ELEV

(44) RF-77-55202 230 1650

(45) -SS203 250 1640

ROCKCHIP (45)

(46) RF-77-55204 250 1640

(47) -SS205 240 1635

(48) -SS206 210 1635

(49) -SS207 220 1625

(50) -SS208 290 1620

ROCKCHIP (50)

(51) RF-77-55209 250 1620

(52) -SS210 220 1620

(53) -SS211 190 1615

(54) -SS212 210 1625

ROCKCHIP (55) BOULDERS 300 PK FSP

(55) -SS213 220 1620

(56) -SS214 230 1590

(57) -SS215 180 1580

45

JULY 26 1977

STAR CLAIM

{ BLASTED TALUS FRAGMENT
 AT 24
 CHIPS GL-77-TR44
 REP SAMPLE 24
 REP SAMPLE FROM
 TALUS GL-77-TR45

EASTEND GR

GL-77 - S33A

FORSTER GREEK

GL-77 - S34

S35

S36

S37

RAPIDS

BRIDGE

S38

FLAGGING

MARINER

HH 28

S39

S40

BRIDGE

S41

S42

GL-77 - R46

FLOAT 400 c/s

S43

GL-77 - 544
IN BAG

SPLIT

BLACK SAND
1200 C/S

.35 MILES
WEST
OF
WELSH
CR.

545 SPLIT BLACK SAND

GL-77 - 546 WELSH CR
FLAGGING MARKED HH 41
FORSTER CR

GL-77 - 547

548

549

550 KERR (IRISH) CR
FALLS

FORSTER CR

551

552

SMALL CREEK CROSSING ROAD

GL-77 - 553

FLAGGING

MARKED HH 48

FORSTER CREEK

GL-77 - 554

(46)

JULY 27 1977

c/s

ELEV
FEET

FORSTER CREEK +

STAR CLAIM

JUST EAST OF WELSH CR

START SOIL SAMPLING TRAVERSE

(58) RF-77-SS222 280 5080

±3" PK FSP PP/ QMx

(59) SS 223 250 5080

(60) SS 224 420 5090

HEAVY TALUS

REP (60)

(61) SS 225 340 5130

TOE OF HEAVY TALUS

(62) SS 226 440 5135

REP (62)

(63) ON TALUS SS 227 500 5160

(64) TOE OF TALUS SS 228 500 5210

(65) IN
TIMBER SS 229 220 5190

(66) SS 230 180 5215

STAR CLAIM

75 METERS
UPSLOPE
FROM (24)

TALUS
} SAME ROCK
TYPE

800

425

METERS

1850

GL-77-R47
GL-77-R48

REP (24A) (24B)

(41)

JULY 28 1977

C/S

JUBILEE FORMATION

CROSSED STEAMBOAT MT.

W TO E ON STEAMBOAT RIDGE RD.

CHECKED OC. ~ 40

TURNED NORTH

BRYANTON CR.

RF-77-569

40

2920

RF-77-570 MUDDLE

JUST BELOW LAST

SWITCH BACK TO

JUBILEE MT. LOOKOUT 4980

RF-77-571 DRY CREEK

// AND TO THE EAST OF

RD TO JUBILEE MT LOOKOUT 4700

RF-77-572 1 MILE SE OF

GIANT MASCOT MINE BLOGS