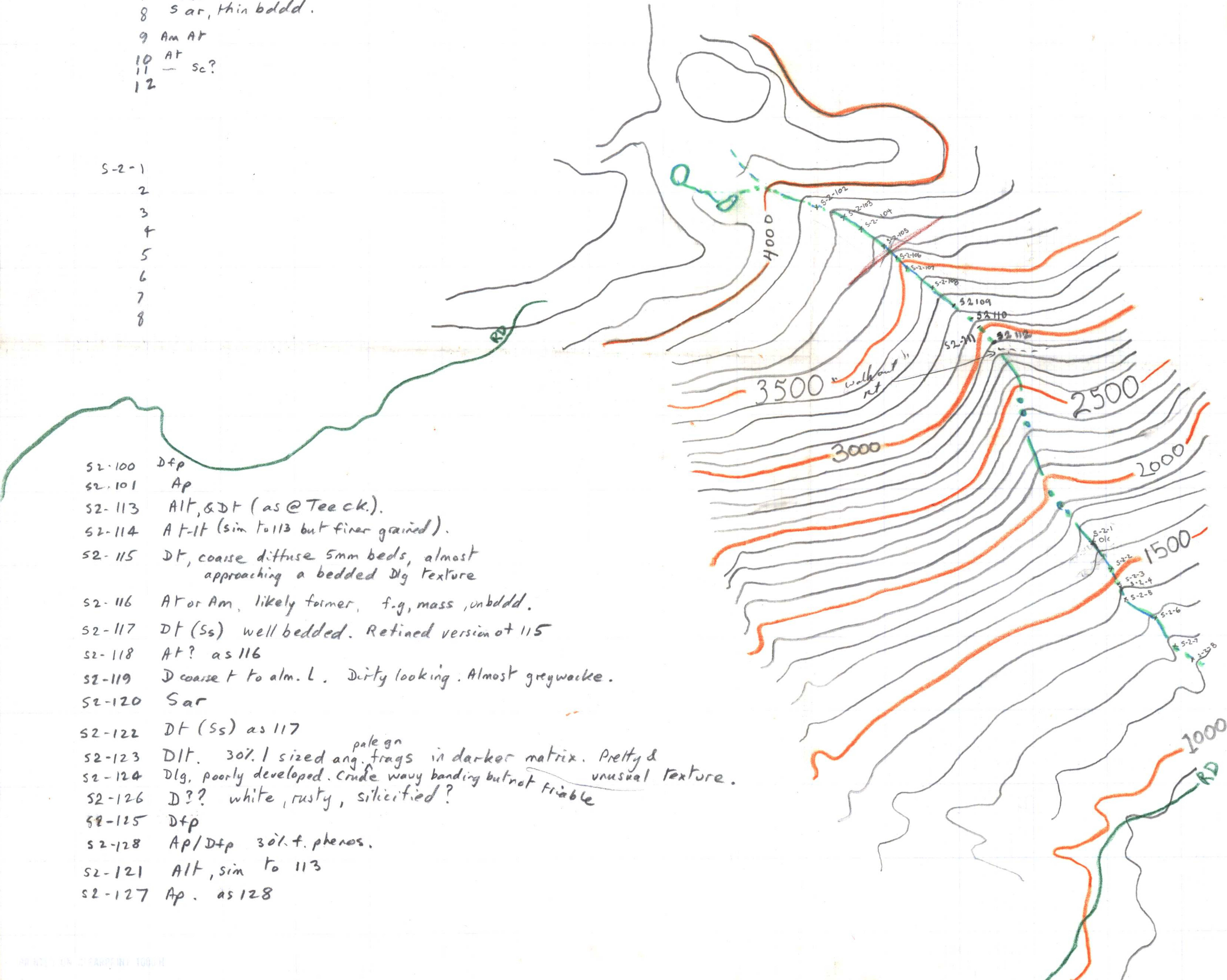


- S2-102 S,c? chlor. streaky, irreg. bdy, purplish cast.
- 3(F) - RDfp, (prp)
- 4(F) - DT & Sc, clear bdy.
- 5 Dtp
- 6 sc?? broken, mass. f.g. pale gn.
- 7 D(AT)
- 8 Sar, thin bddd.
- 9 Am AT
- 10 AT
- 11 - sc?
- 12

- S-2-1
- 2
- 3
- 4
- 5
- 6
- 7
- 8

- S2-100 Dtp
- S2-101 Ap
- S2-113 Alt, & DT (as @ Tee ck.).
- S2-114 AT-IT (sim to 113 but finer grained).
- S2-115 DT, coarse diffuse 5mm beds, almost approaching a bedded Dlg texture
- S2-116 AT or Am, likely former, f.g, mass, unbedded.
- S2-117 DT (Ss) well bedded. Retained version of 115
- S2-118 AT? as 116
- S2-119 D coarse t to alm. L. Dirty looking. Almost greywacke.
- S2-120 Sar
- S2-122 DT (Ss) as 117
- S2-123 DIT. 30% 1 sized ang. frags in darker matrix. Pretty & unusual texture.
- S2-124 Dlg, poorly developed. Crude wavy banding but not friable
- S2-126 D?? white, rusty, silicified?
- S2-125 Dtp
- S2-128 Ap/Dtp 30% f. phenos.
- S2-121 Alt, sim to 113
- S2-127 Ap. as 128



Refer to notes Aug 20/78 for details of geology and rock type

upper S-2
Goes from S-2102 to S2-112

where are S-2 112 to 128?
NB from S2-120 to 124

NB - 4000' on this map is ≈ 3900 on revised BASE MAP.

