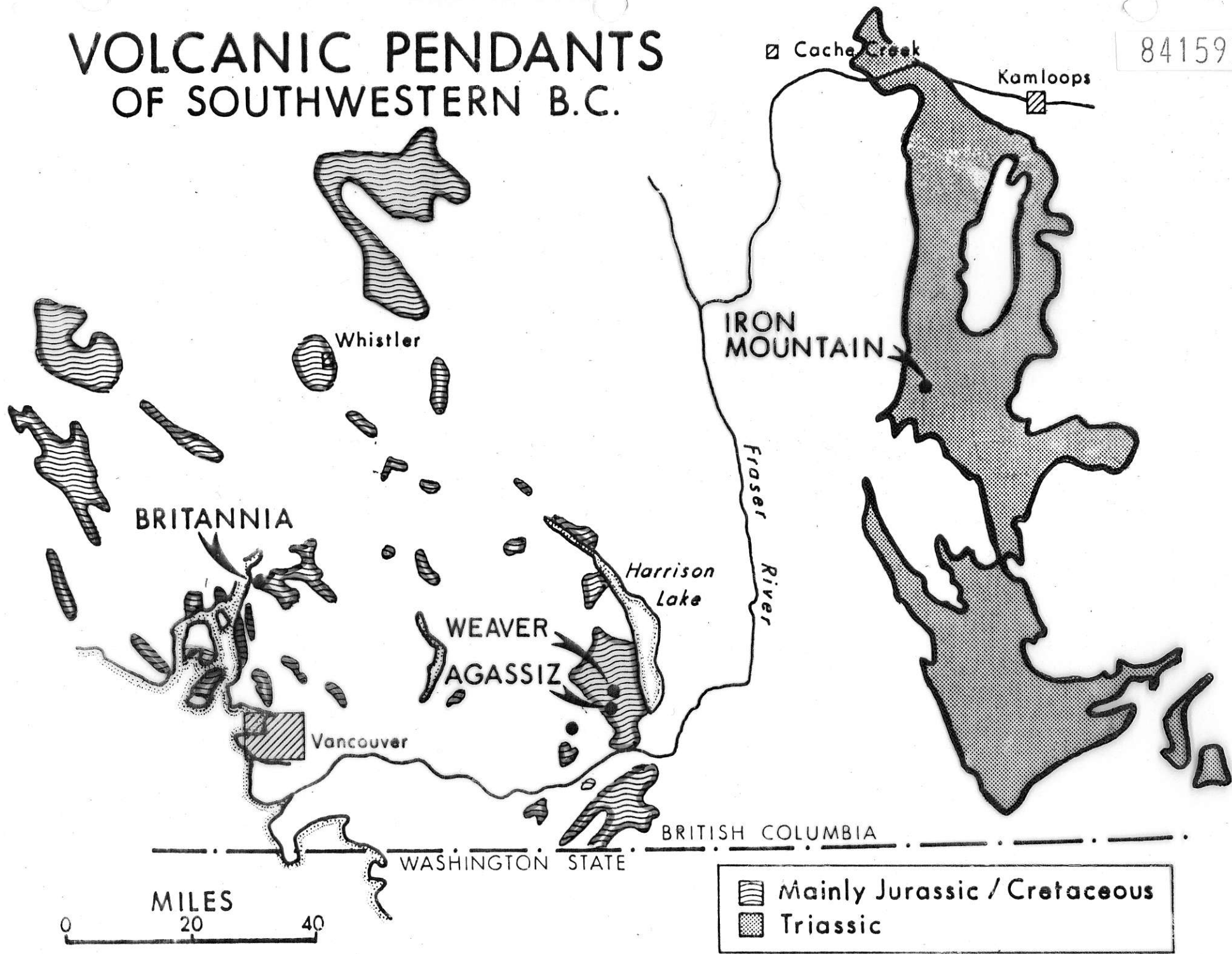


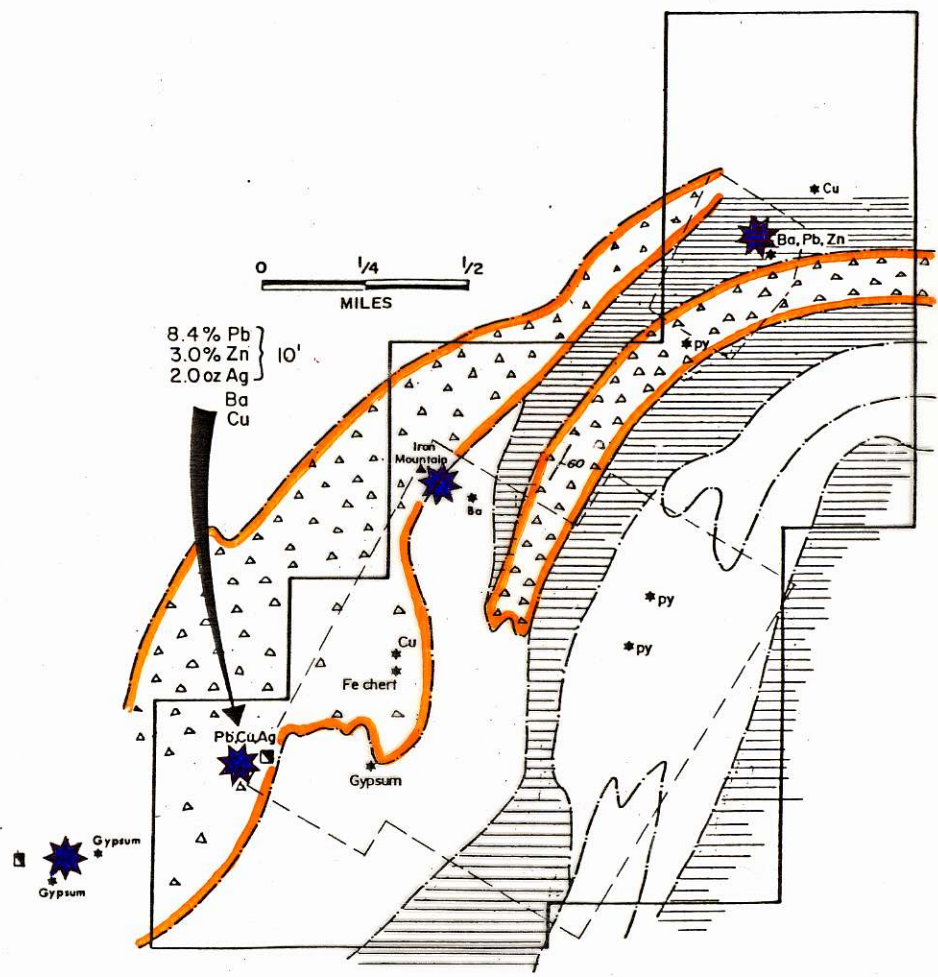
# VOLCANIC PENDANTS OF SOUTHWESTERN B.C.

841592







# FAVOURABLE TREND IDENTIFIED

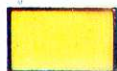


Iron Mountain M491

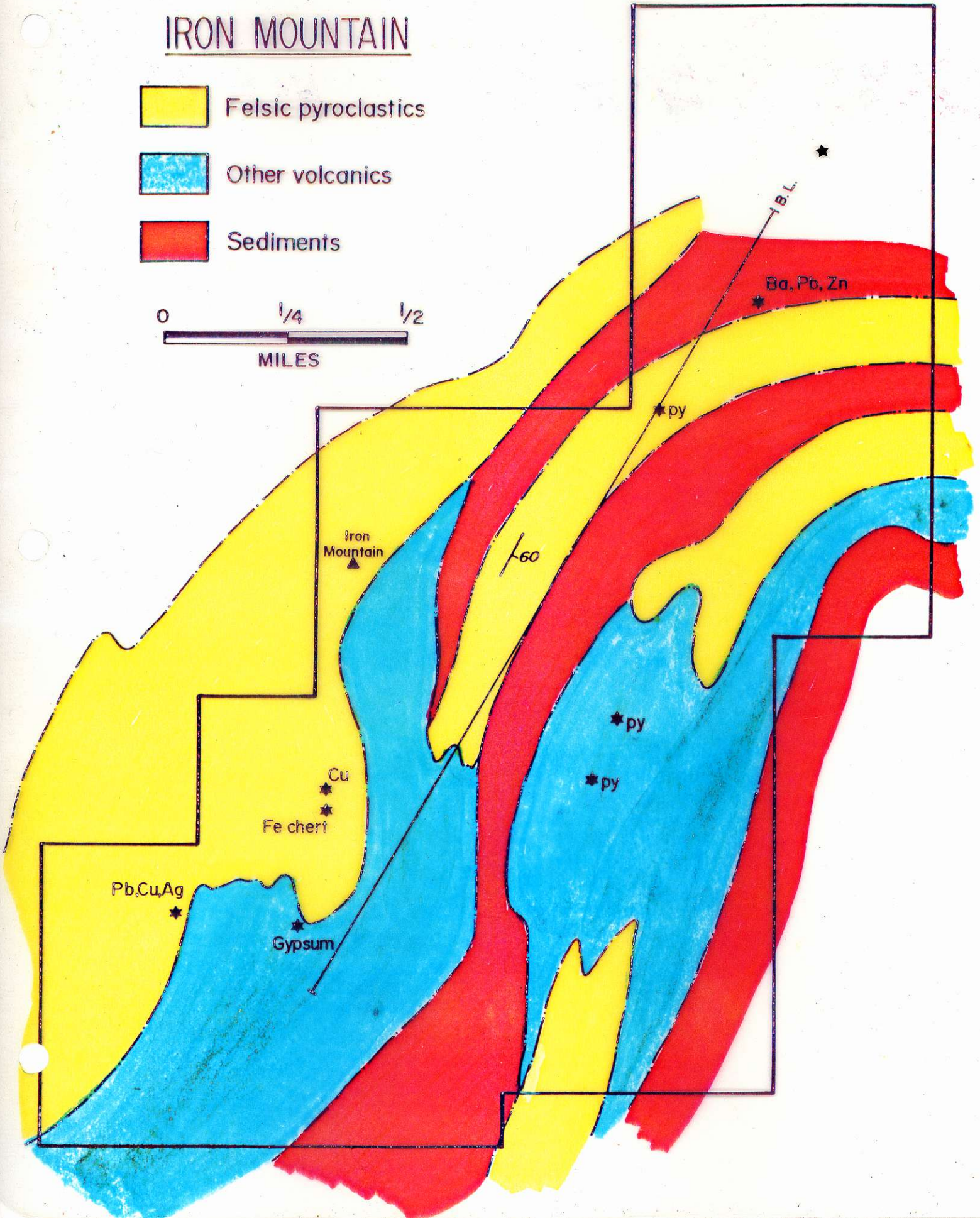


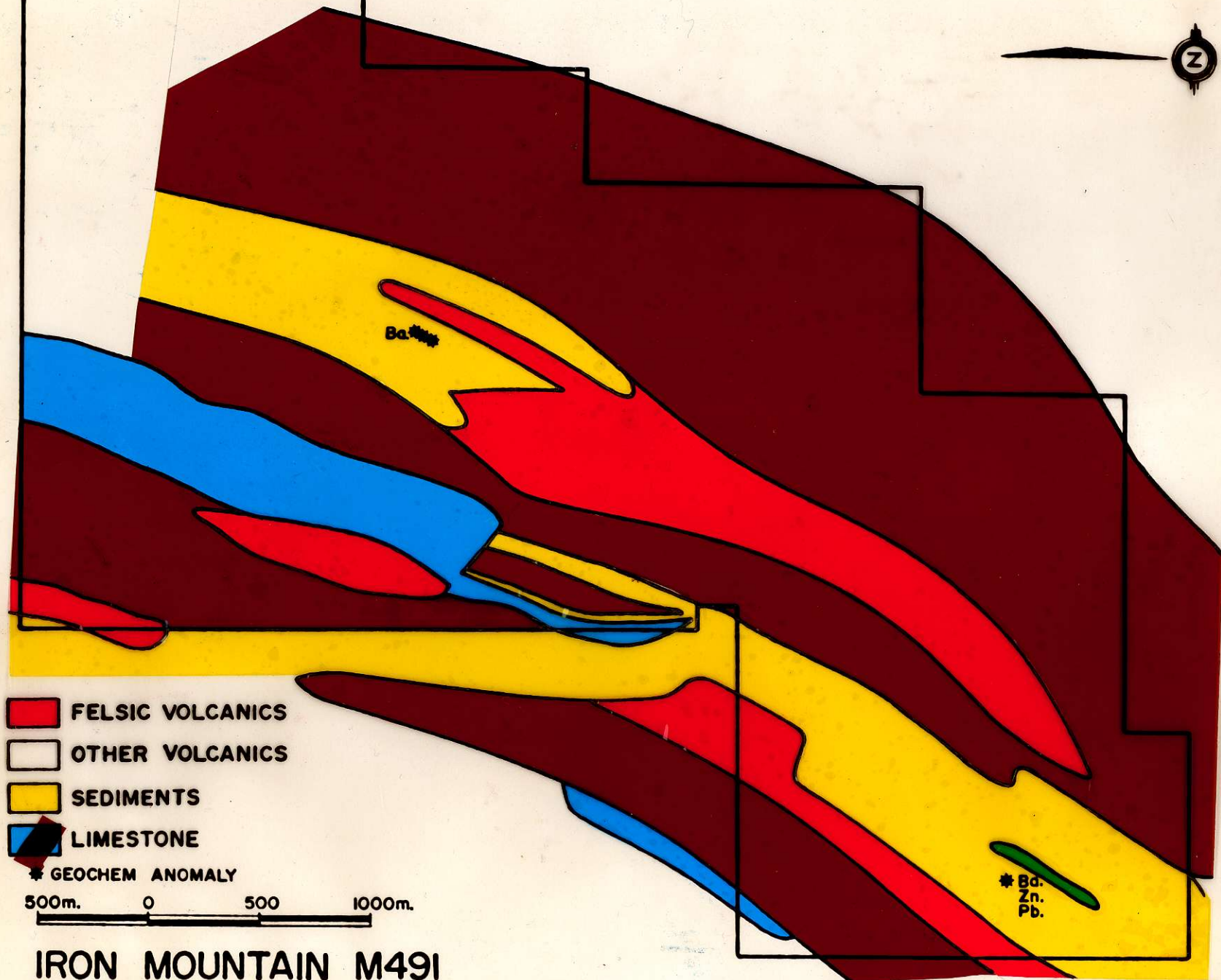
## IRON MOUNTAIN

-  sediments
-  other volcanics
-  felsic volcanics
-  VOLCANIC CENTRES

# IRON MOUNTAIN


-  Felsic pyroclastics
-  Other volcanics
-  Sediments





 FELSIC VOLCANICS

 OTHER VOLCANICS

 SEDIMENTS




 LIMESTONE

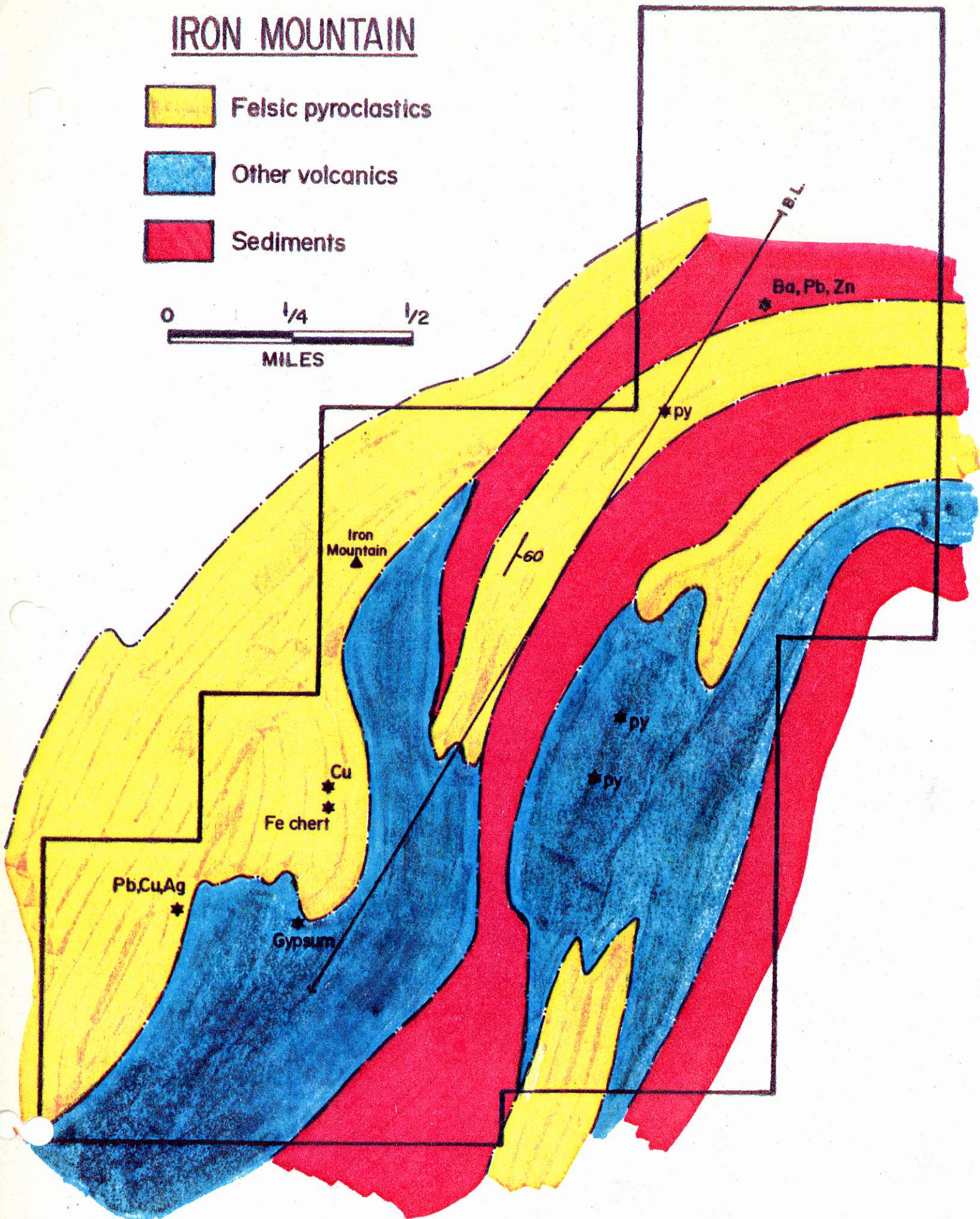
 GEOCHEM ANOMALY

500m. 0 500 1000m.

IRON MOUNTAIN M491

# IRON MOUNTAIN

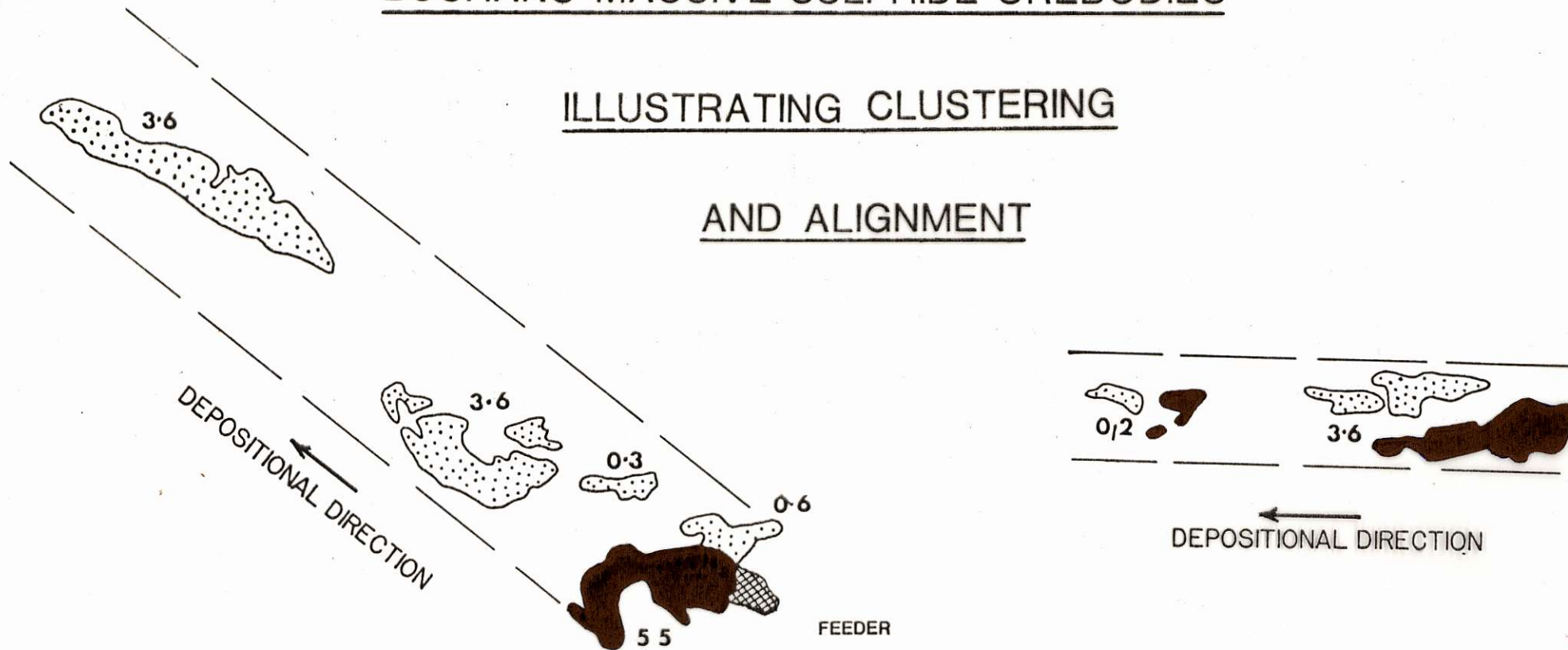
-  Felsic pyroclastics
-  Other volcanics
-  Sediments



# BUCHANS MASSIVE SULPHIDE OREBODIES

## ILLUSTRATING CLUSTERING

## AND ALIGNMENT



 PRIMARY ORE

 TRANSPORTED ORE

1.2 MILLIONS OF TONS

0 2000  
FEET