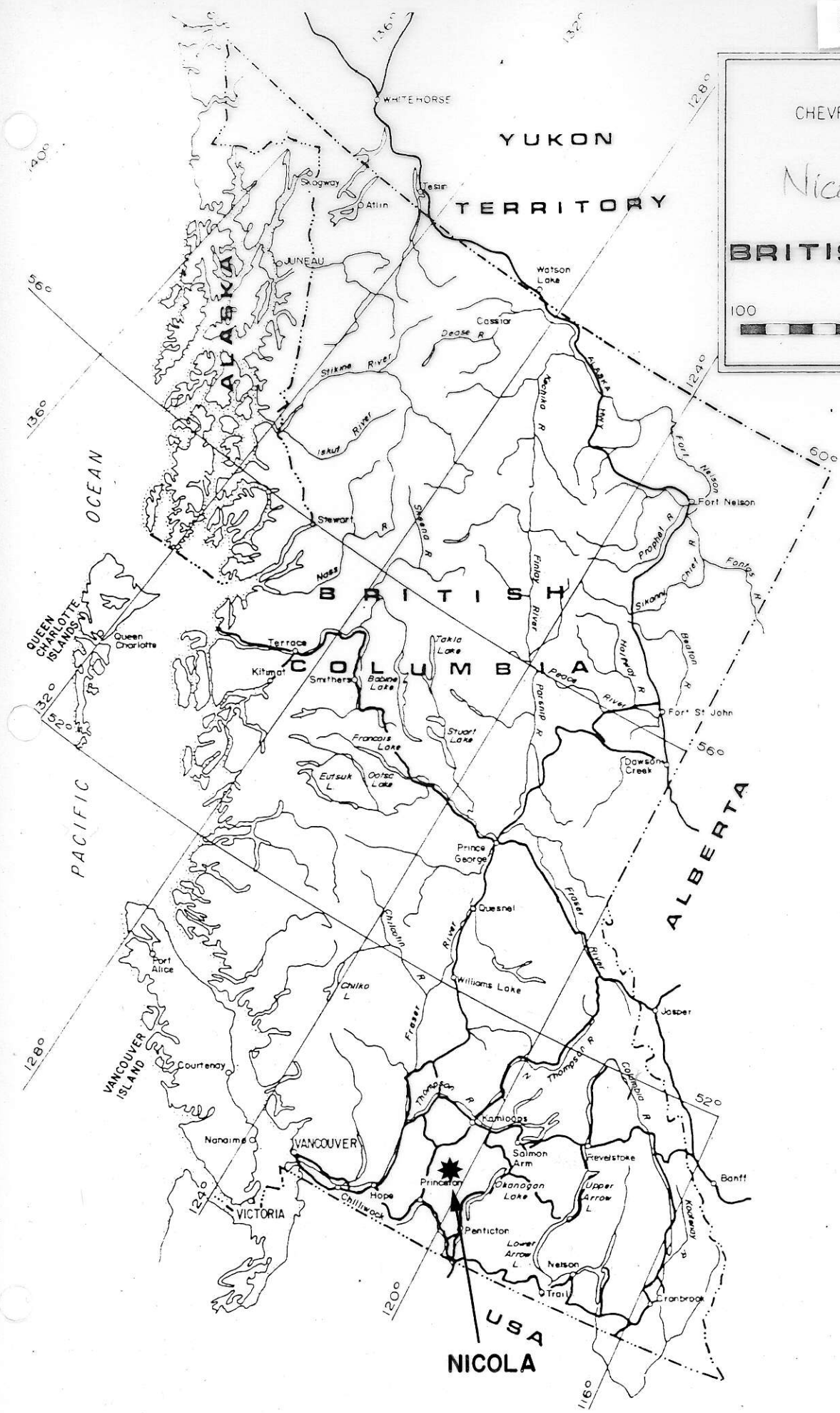


841583

CHEVRON STANDARD LIMITED
 MINERALS STAFF
Nicola M-511
BRITISH COLUMBIA
 MILES
 100 0 100 200



USA
NICOLA

NICOLA VOLCANICS

PROPOSAL

AN EXTENSIVE BELT OF TRIASSIC NICOLA VOLCANICS IS PRESENT IN THE MERRITT AREA OF B.C. AND IS CHARACTERIZED BY A HIGH PROPORTION OF FELSIC PYROCLASTICS, BY MARINE SEDIMENTS, AND ABUNDANT CU-FE, CU, AND PB-AG-CU SHOWINGS, INCLUDING THE LARGE CRAIGMONT CU-FE MINE.

CURRENT WORK IN ONE AREA (IRON MOUNTAIN) BY CHEVRON SUGGESTS A GOOD POTENTIAL FOR MASSIVE SULPHIDE MINERALIZATION. SPECIFIC FEATURES OF ENCOURAGEMENT INCLUDE KNOWN PB-AG-CU LENSES, BEDDED PYRITE, AND GYPSUM IN THE VICINITY OF AT LEAST ONE SILICIFIED RHYOLITE VOLCANIC CENTRE.

AT LEAST TWO FURTHER AREAS IN THIS REGION, AS OUTLINED ON THE ACCOMPANYING SKETCH, DESERVE FURTHER EXAMINATION. A PORTION OF THE GROUND IN QUESTION IS STAKED BUT IS AVAILABLE ON FAVOURABLE TERMS. A 1981 PROGRAM IS PROPOSED AS FOLLOWS:

1. LITERATURE RESEARCH
2. PROPERTY EXAMINATIONS
3. REGIONAL TRAVERSES TO OUTLINE MOST FAVOURABLE GEOLOGICAL SECTIONS AND EXAMINE UNSTAKED SHOWINGS
4. PROPERTY ACQUISITION

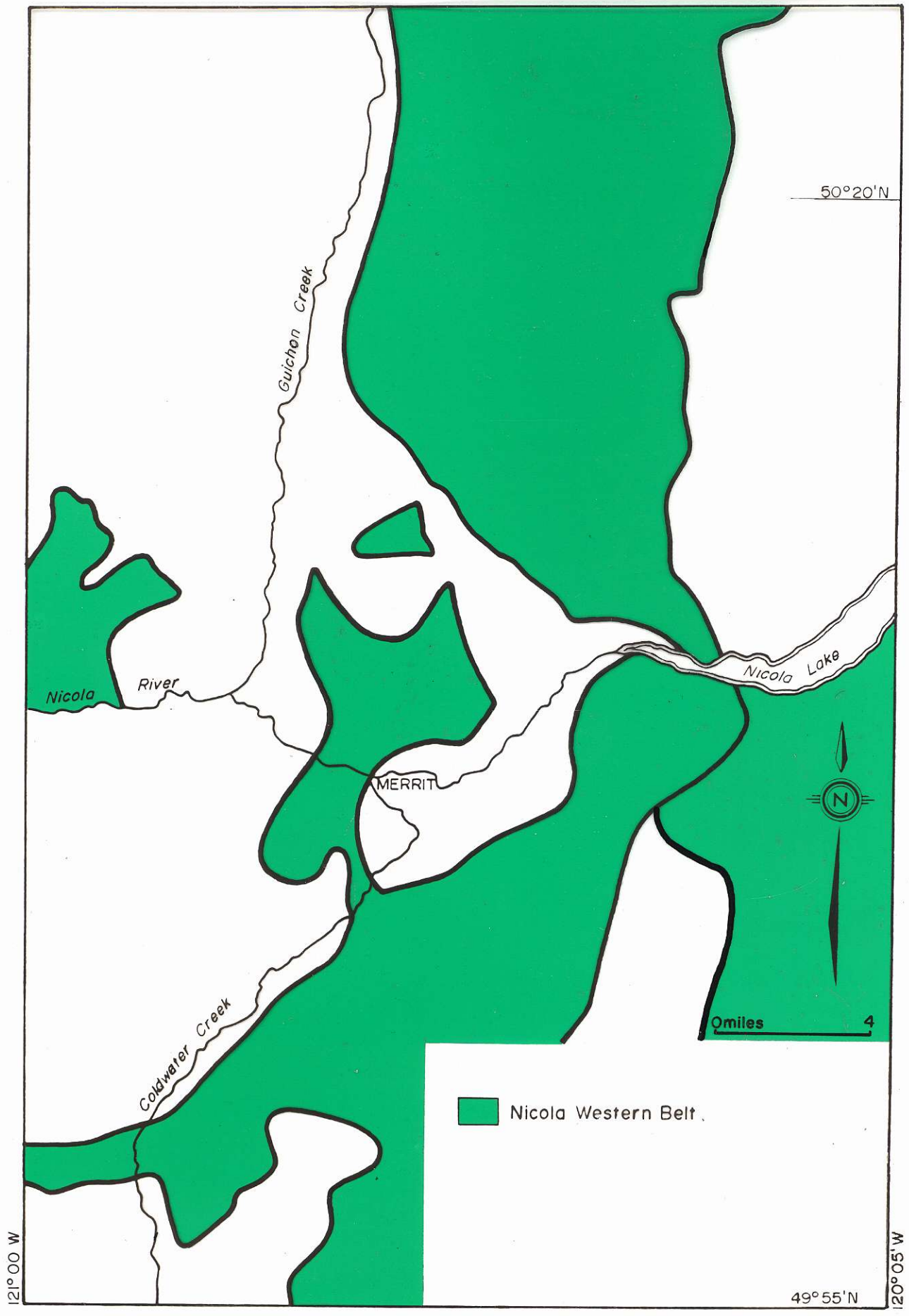
A MINIMUM OF U.S. \$20,000. SHOULD BE BUDGETED FOR THIS PROGRAM.

NICOLA

PROGRAM AND BUDGET

- (A) GEOLOGICAL EVALUATION OF THE BELT FROM MERRITT TO KAMLOOPS.
- (B) AIRBORNE E.M. AND MAGNETICS COVERAGE OF SOME OF THESE AREAS AND FOLLOW-UP OF AREAS FROM THIS YEAR.
- (C) GEOLOGICAL EVALUATION OF THESE AREAS.

IN HOUSE	-		\$ 25,000.
OUT HOUSE	-	GEOPHYSICS	50,000.
	-	GEOLOGICAL MAPPING AND PROSPECTING	<u>25,000.</u>
			\$100,000. US



50°20'N

Guichon Creek

Nicola River

Nicola Lake

MERRITT

Coldwater Creek



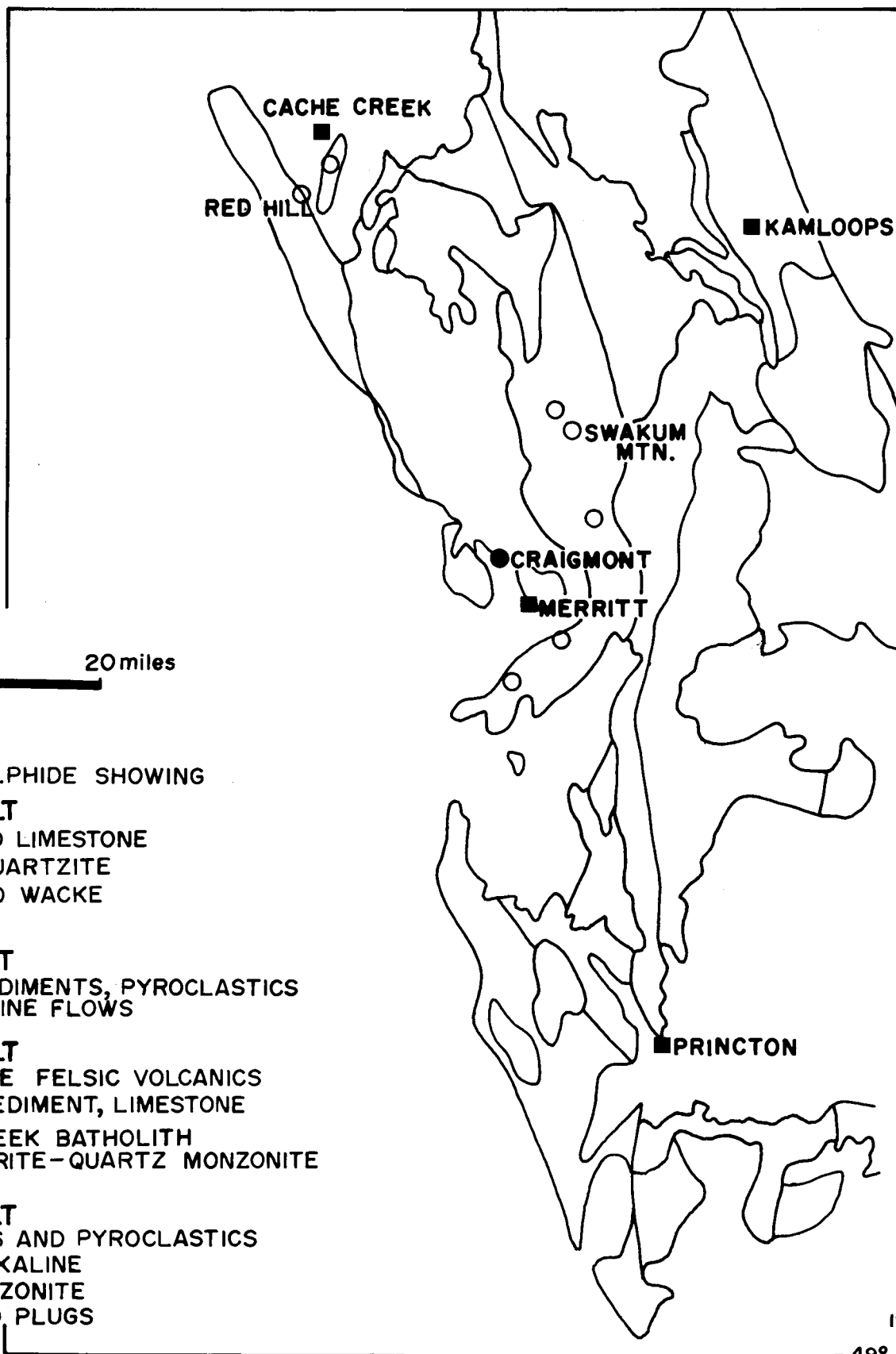
0 miles 4

 Nicola Western Belt

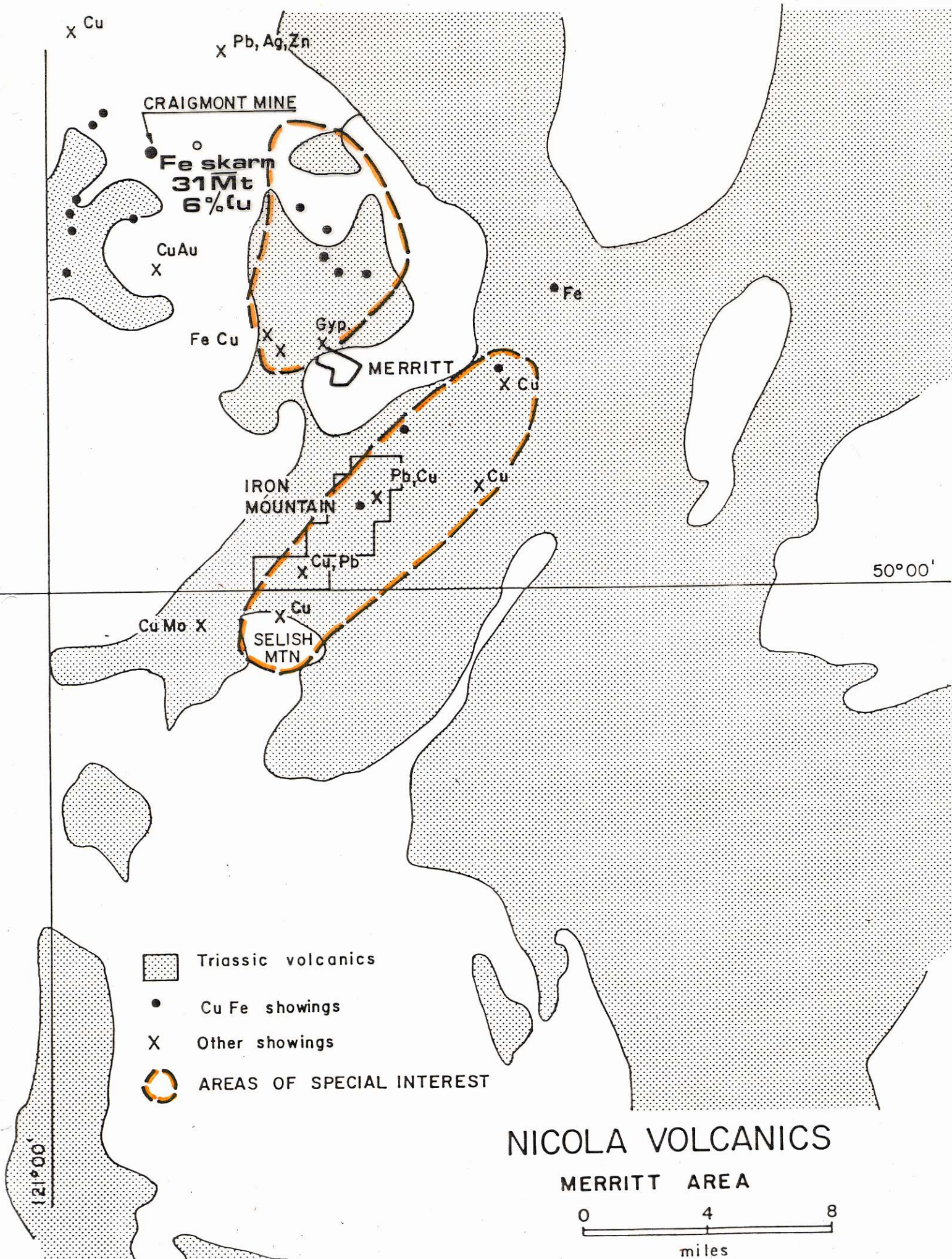
121°00' W

49°55'N

120°05' W








NICOLA GROUP

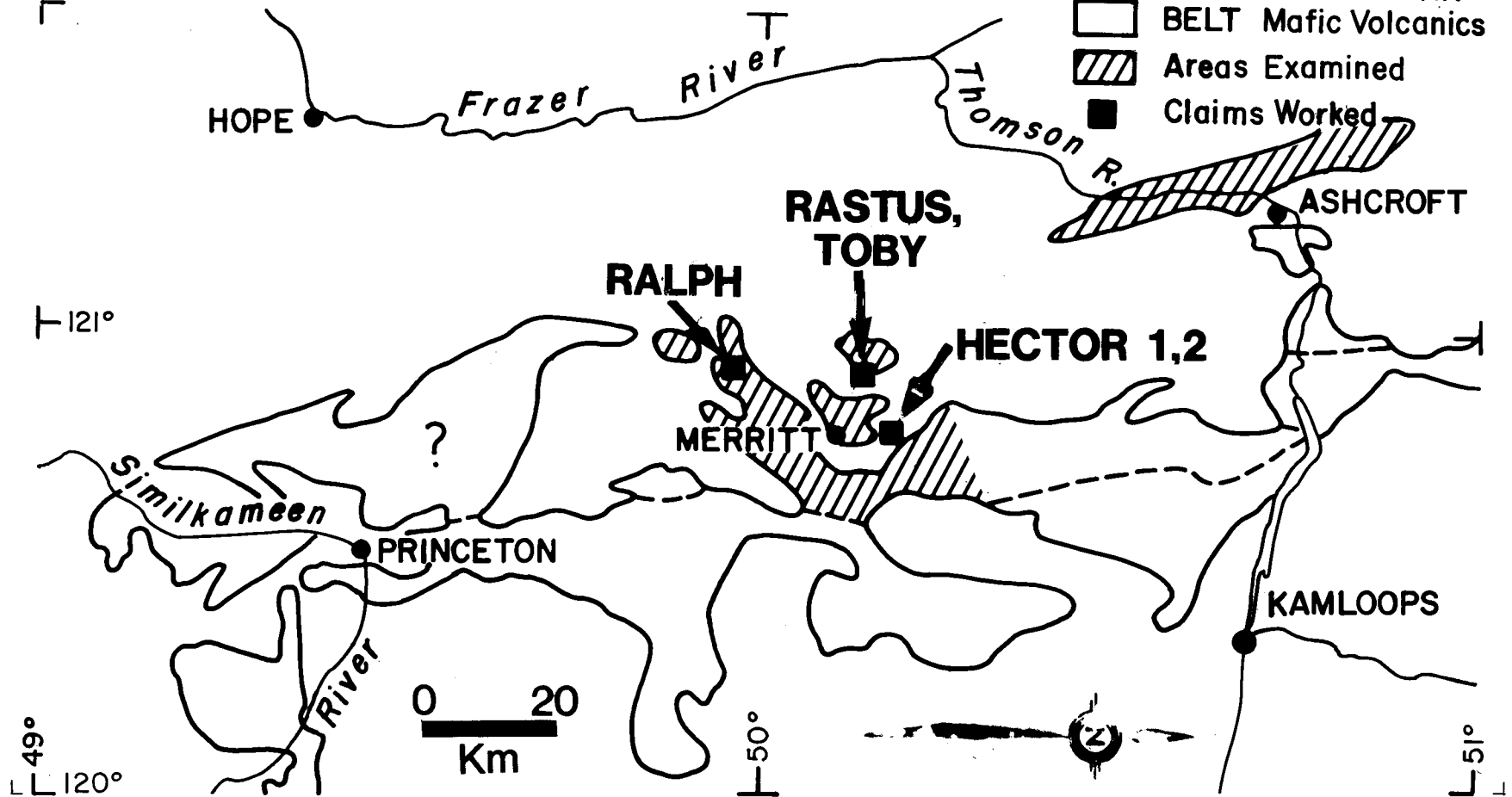




NICOLA M4II

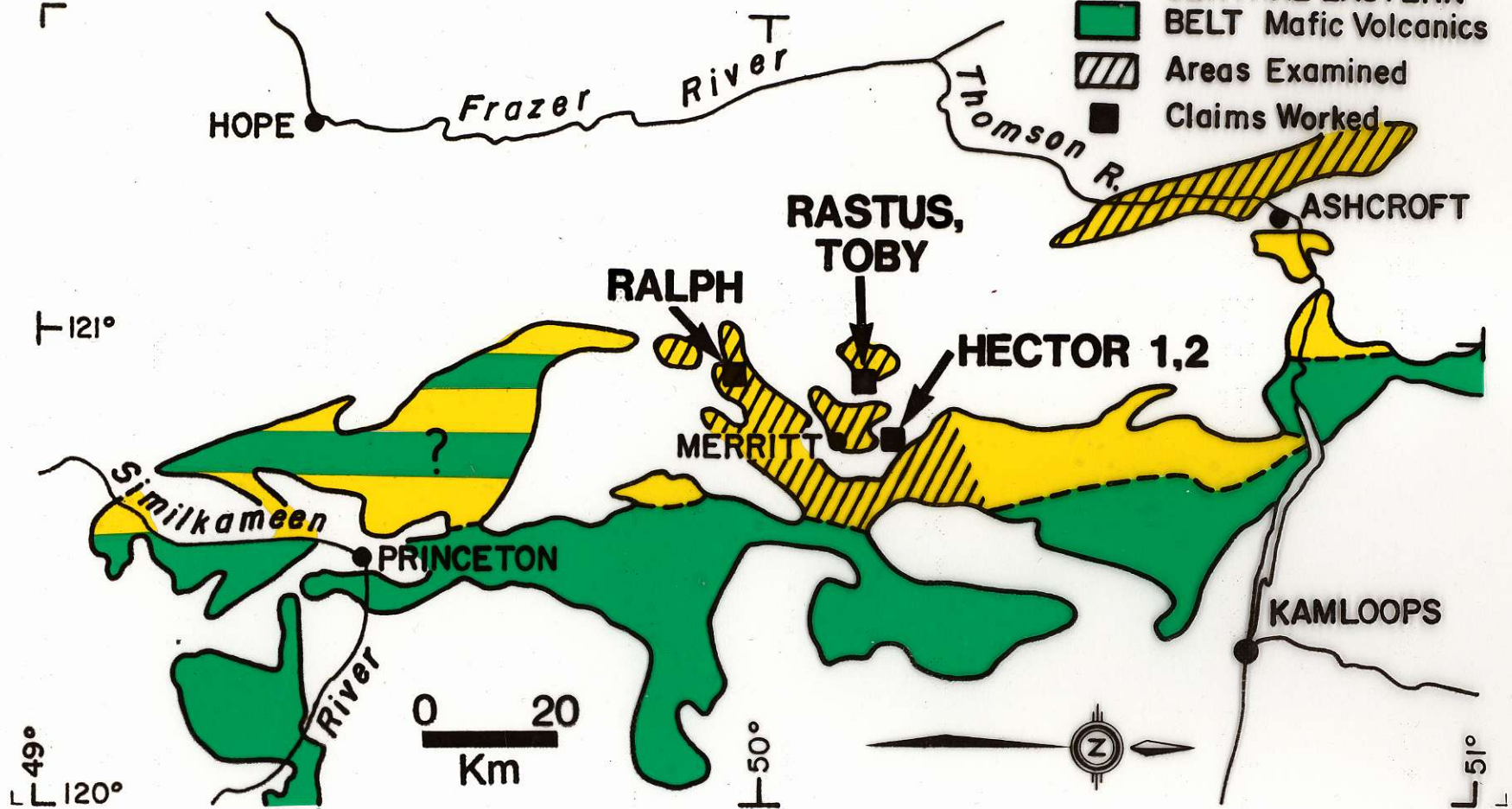
NICOLA GROUP IN SOUTHERN BRITISH COLUMBIA

-  **NICOLA GROUP**
Calcaline Volcanics
-  **WESTERN BELT**
Intermediate Volcanics
-  **CENTRAL EASTERN BELT**
Mafic Volcanics
-  **Areas Examined**
-  **Claims Worked**



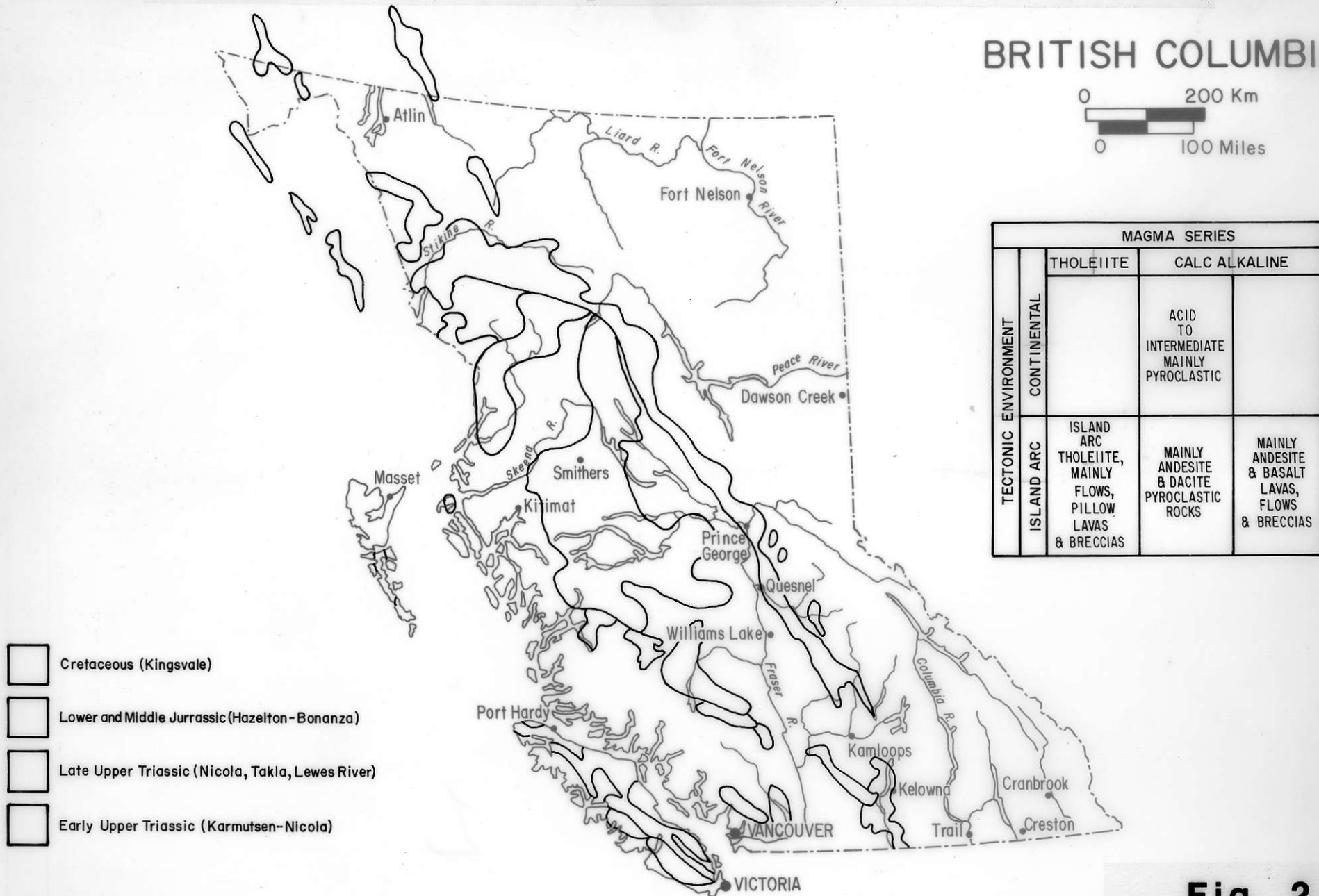
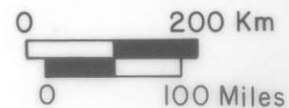
NICOLA GROUP IN SOUTHERN BRITISH COLUMBIA

- NICOLA GROUP**
Calcaline Volcanics
- WESTERN BELT**
Intermediate Volcanics
- CENTRAL EASTERN BELT**
Mafic Volcanics
- Areas Examined**
- Claims Worked**



Mesozoic volcanism in the Canadian Cordillera

BRITISH COLUMBIA



		MAGMA SERIES	
		THOLEIITE	CALC ALKALINE
TECTONIC ENVIRONMENT	CONTINENTAL		ACID TO INTERMEDIATE MAINLY PYROCLASTIC
	ISLAND ARC	ISLAND ARC THOLEIITE, MAINLY FLOWS, PILLOW LAVAS & BRECCIAS	MAINLY ANDESITE & DACITE PYROCLASTIC ROCKS MAINLY ANDESITE & BASALT LAVAS, FLOWS & BRECCIAS

- Cretaceous (Kingsvale)
- Lower and Middle Jurassic (Hazelton-Bonanza)
- Late Upper Triassic (Nicola, Takla, Lewes River)
- Early Upper Triassic (Karmutsen-Nicola)

Fig. 2

AFTER SOUTHER, 1974

MS 11

M-511

LEGEND

- [K] KINGSDALE VOLCANICS
- [G] HYBRID PHASE GUICHON BATHOLITH
- [P] QUARTZ FELDSPAR PORPHYRY
- [A] BASALT/ANDESITIC VOLCANICS
- [R] RHYOLITE
- [H] HORNFELS
- [C] CARBONATE RICH ROCK

•A •B •C DRILL TARGETS

SCALE 1" = 1mile

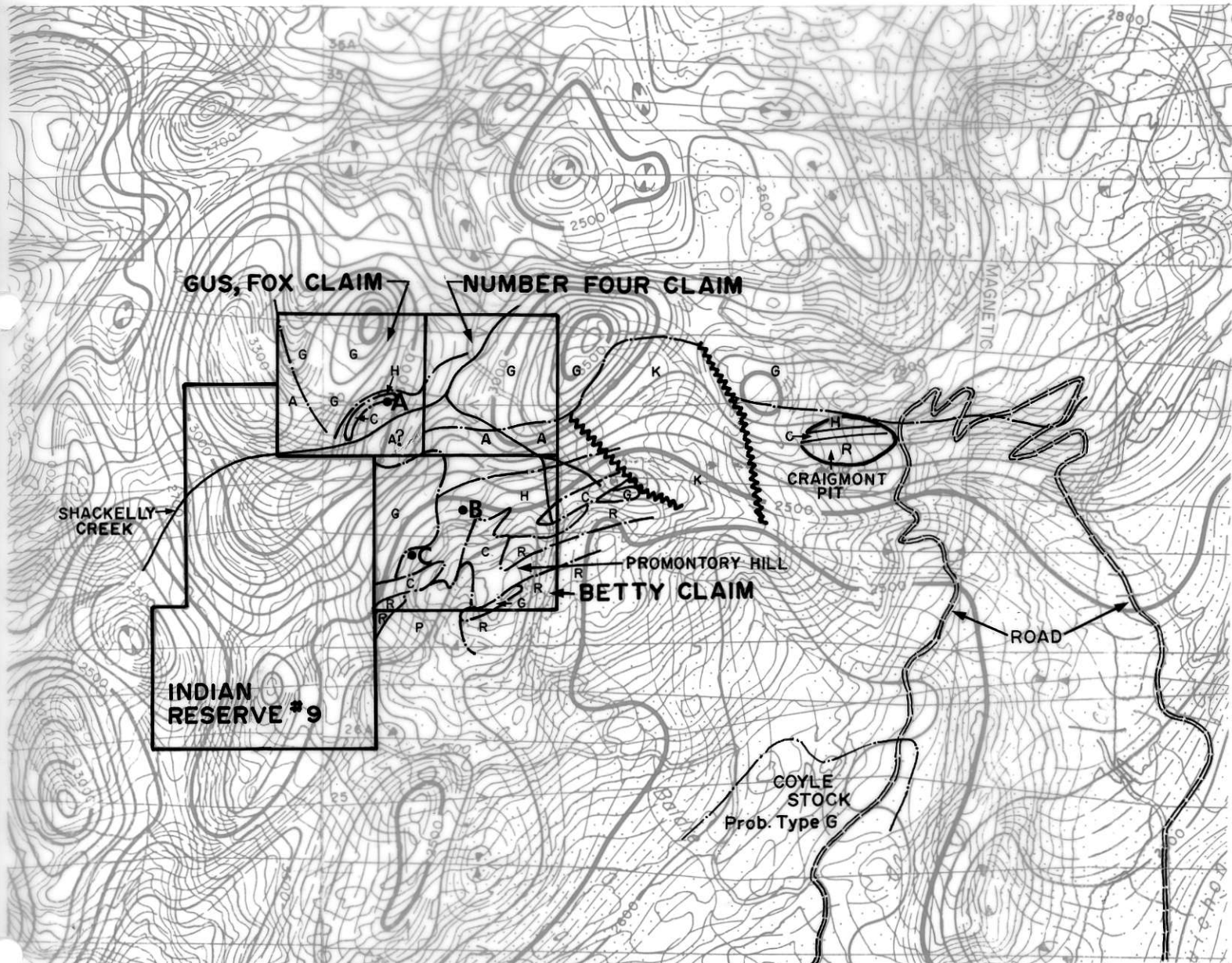
SCALE 1" = 1mile

BETTER RESOURCES LTD. CLAIMS PROMONTORY HILL AREA NICOLA M.D. B.C. 92I /2, I /3



121°00'

55'

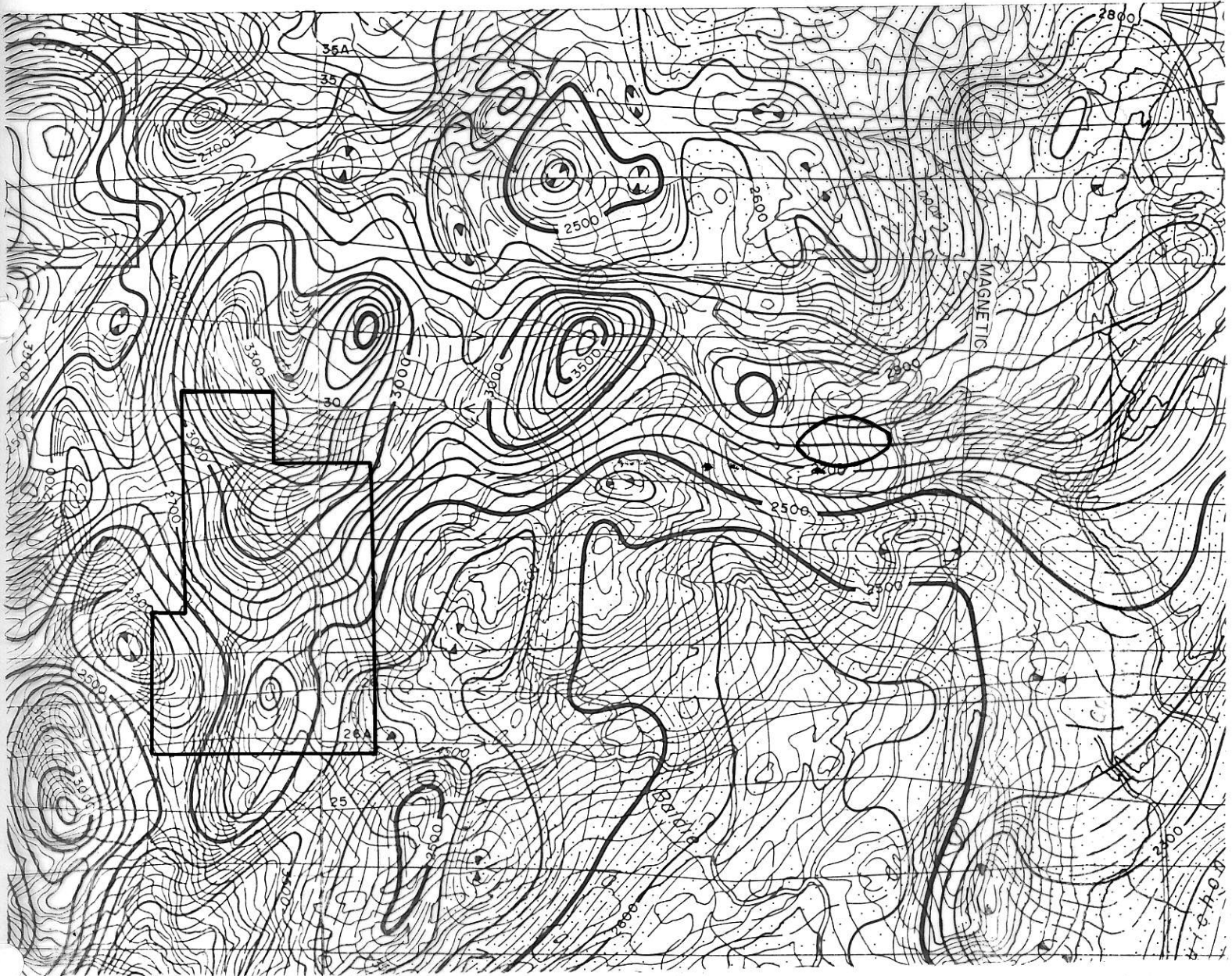


NOTE SLIGHT DISTORTION IN GEOLOGIC MAP SCALE DUE TO MULTIPLE XEROX REDUCTIONS
REF. FIG. No.7 BRISTOW 1982
CRAIGMONT AREA AEROMAGNETICS
REF. MAPS 5209G, 520IG 92I/2, I/3

SCALE 1" = 1mile

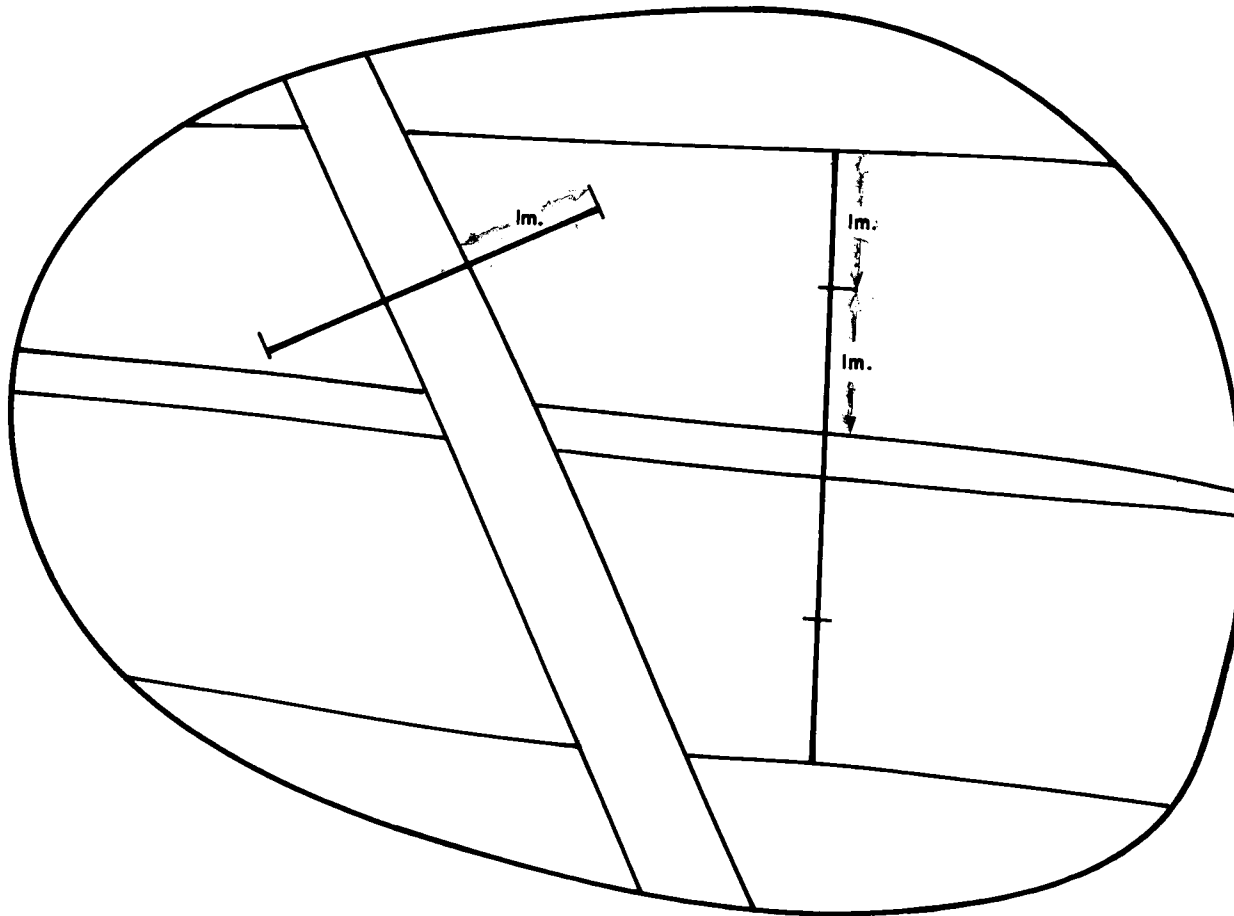
121°00'

55'



CRAIGMONT AREA AEROMAGNETICS
REF. MAPS 5209G, 5201G 921/2, 1/3

CHIP SAMPLING OF A SCHEMATIC OUTCROP



I Continuous chip samples representative of unit.

M511