

WCS 0292999 TDC ATTITUDES (100/40 N)

SANDSTONE SILTSTONE

CONGLOMERATE

VOLCANIC

SPECIMEN SITE A.B. ...; DO NOT WRITE ON OTHER SIDE OR USE COLOURS

CHERT

SHALE

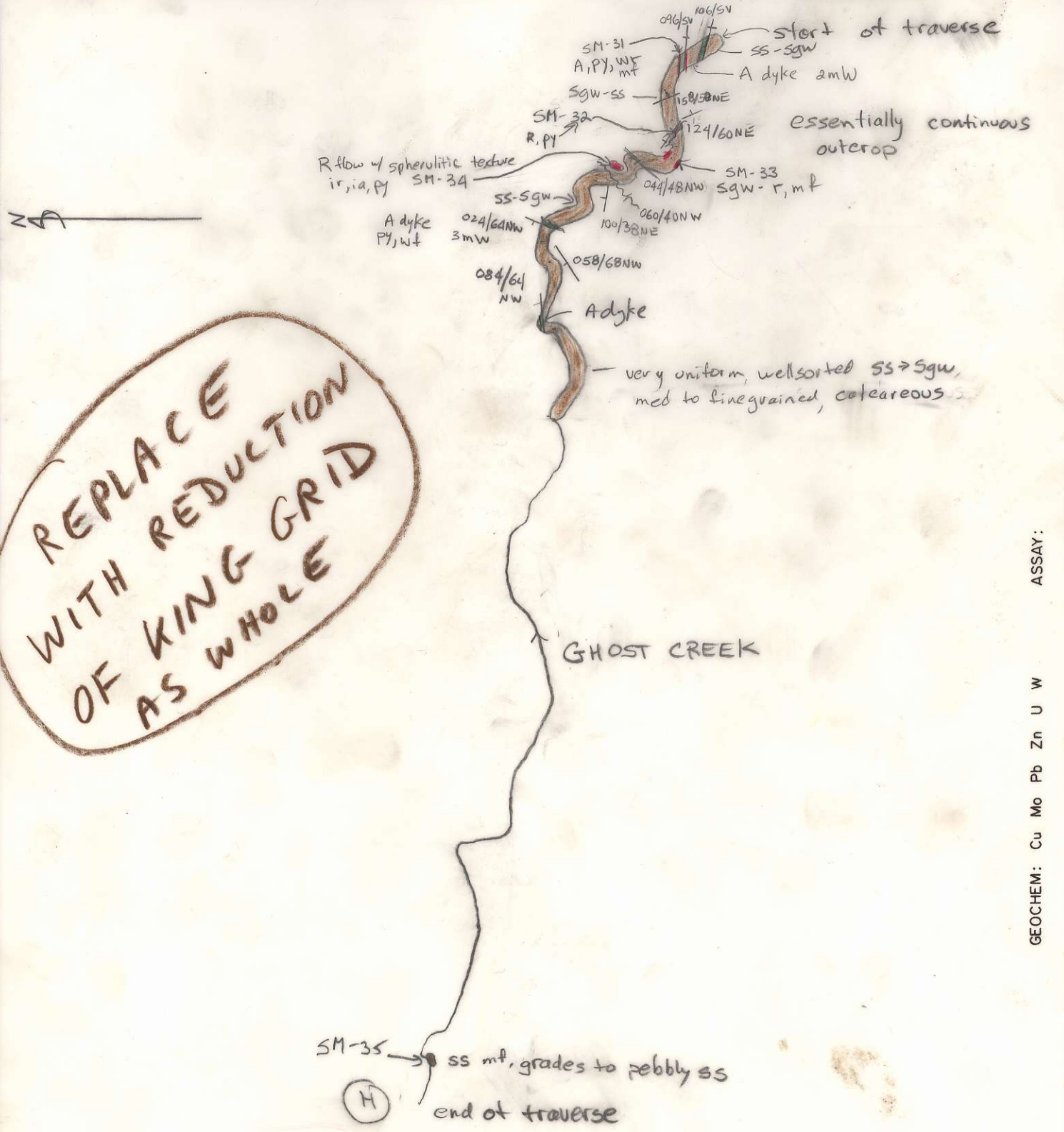
LIMESTONE DOLOMITE

SILT X SOIL ● ROCK ■

INTRUSIVE

GOSSAN, MINERALS

Project <b>KC</b>	NTS	Scale <b>1: 10,000</b>	Page <b>1</b> of <b>1</b>	Traverse
Sampler <b>S McAllister D. Hodges</b>	Location, Target (words)		Sample Nos <b>KC-SM-31-35</b>	
Date <b>May 26/81</b>	photo no. <b>Ghost Creek</b>	Cert. Nos <b>841306</b>		



calc. = calcareous  
Sgw - greywacke  
110/SV = subvertical dip

DON'T FORGET CONTOURS, DRAINAGE, NORTH ARROW, LAT/LONG, SAMPLE SITES, WORKINGS, TRAILS, GOSSANS, OBSERVED GEOLOGY: DEFINED — INFERRED --- ASSUMED.....

ASSAY: GEOCHEM: Cu Mo Pb Zn U W

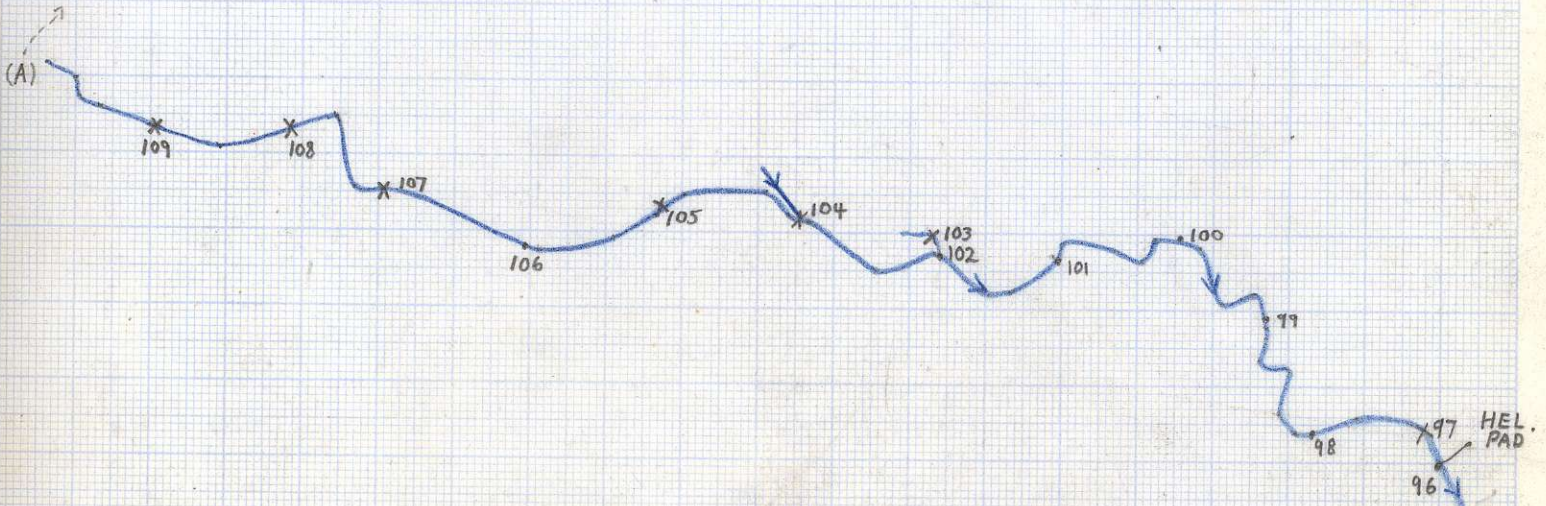


# KC AREA

GHOST CREEK TRAVERSE  
DH 96-110  
MAY 26, 1981  
DEREK HODGE  
SANDY McALLISTER (MAPPER)



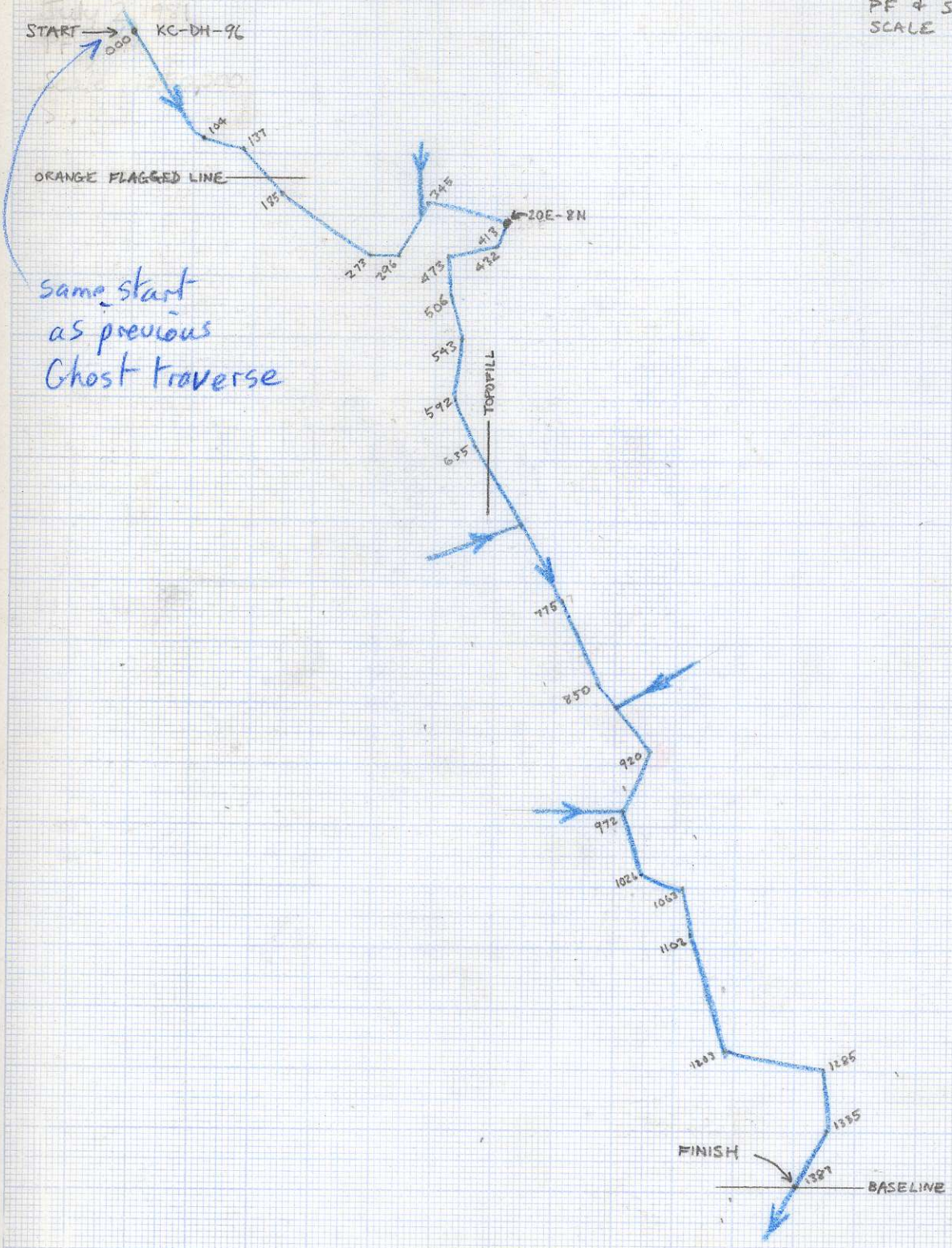
HELICOPTER PAD  
1560 M  
(TO  
BASELINE)  
X (A)  
110  
|  
| LINE 2W (NORTH)  
|





KING CLAIM  
GHOST CREEK REGIONAL

KING CLAIM  
GHOST CREEK REGIONAL  
JULY 2, 1981  
PF & SM  
SCALE 1:50,000



Same start  
as previous  
Ghost traverse

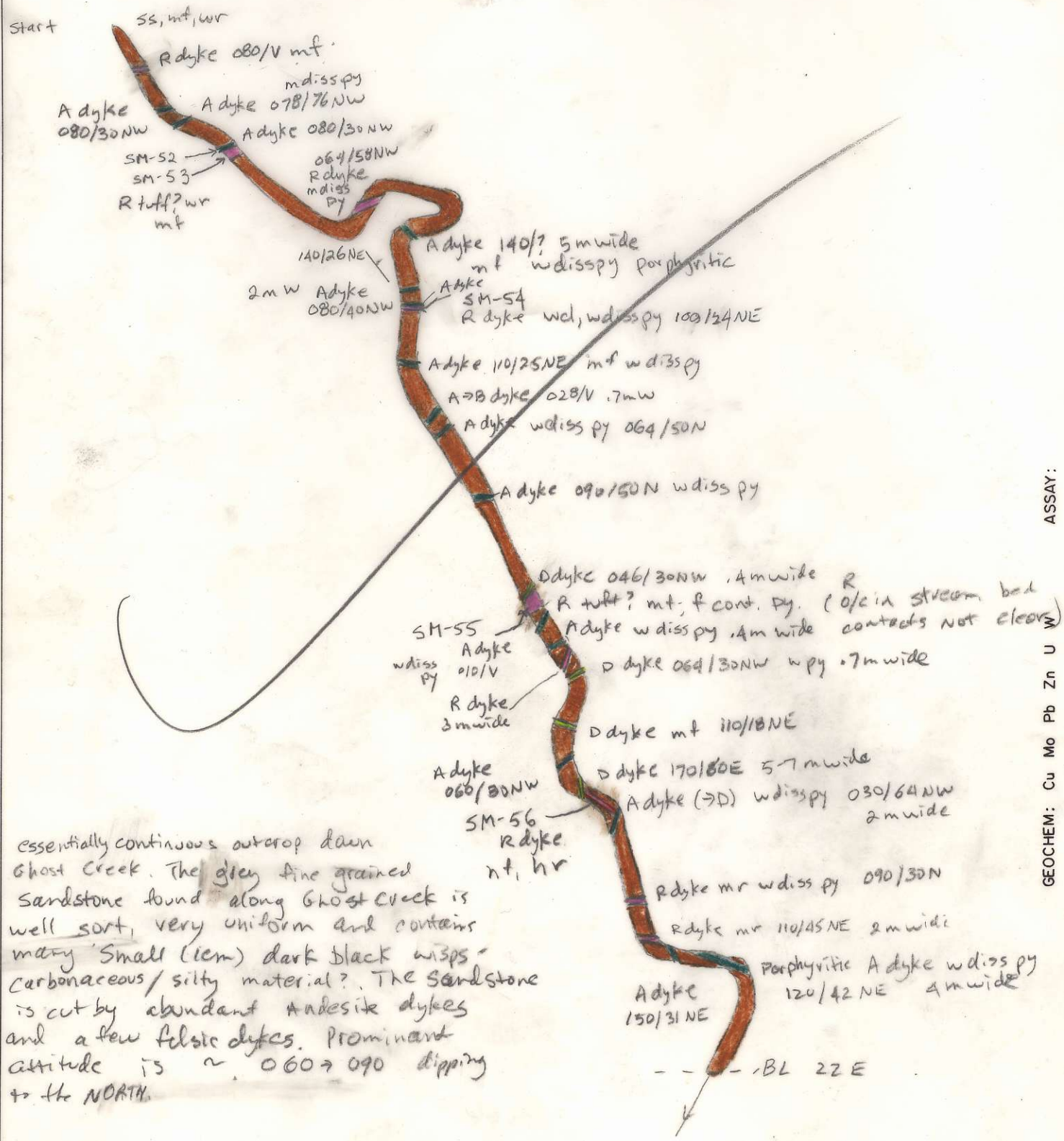


FINISH  
BASELINE



WCS-07999 T11 ATTITUDES (100/40 N)  
 SANDSTONE SILTSTONE  
 CONGLOMERATE  
 VOLCANIC  
 SPECIMEN SITE A.B...; DO NOT WRITE ON OTHER SIDE OR USE COLOURS  
 CHERT  
 SHALE  
 LIMESTONE DOLOMITE  
 INTRUSIVE  
 GOSSAN, MINERALS  
 DON'T FORGET CONTOURS, DRAINAGE, NORTH ARROW, LAT/LONG, SAMPLE SITES, WORKINGS, TRAILS, GOSSANS, OBSERVED GEOLOGY: DEFINED --- INFERRED ---- ASSUMED.....

Project King	NTS	Scale 1:5,000	Page 1 of 1	Traverse
Sampler S.M (PF)	Location, Target (words) GHOST CREEK From end of D15M TRAVERSE (May?) ~ 16E 10N TO photo no. intersection with BL at 22E		Sample Nos	KSM-52 to 56
Date July 2/81			Cert. Nos	



essentially continuous outcrop down Ghost Creek. The grey fine grained sandstone found along Ghost Creek is well sort, very uniform and contains many small (1cm) dark black wisps - carbonaceous/silty material?. The sandstone is cut by abundant andesite dykes and a few felsic dykes. Prominent attitude is ~ 060 → 090 dipping to the NORTH.

ASSAY: GEOCHEM: Cu Mo Pb Zn U W