

← 500' →



Lagged
outcrops
no outcrops

Eagle
Creek
1500

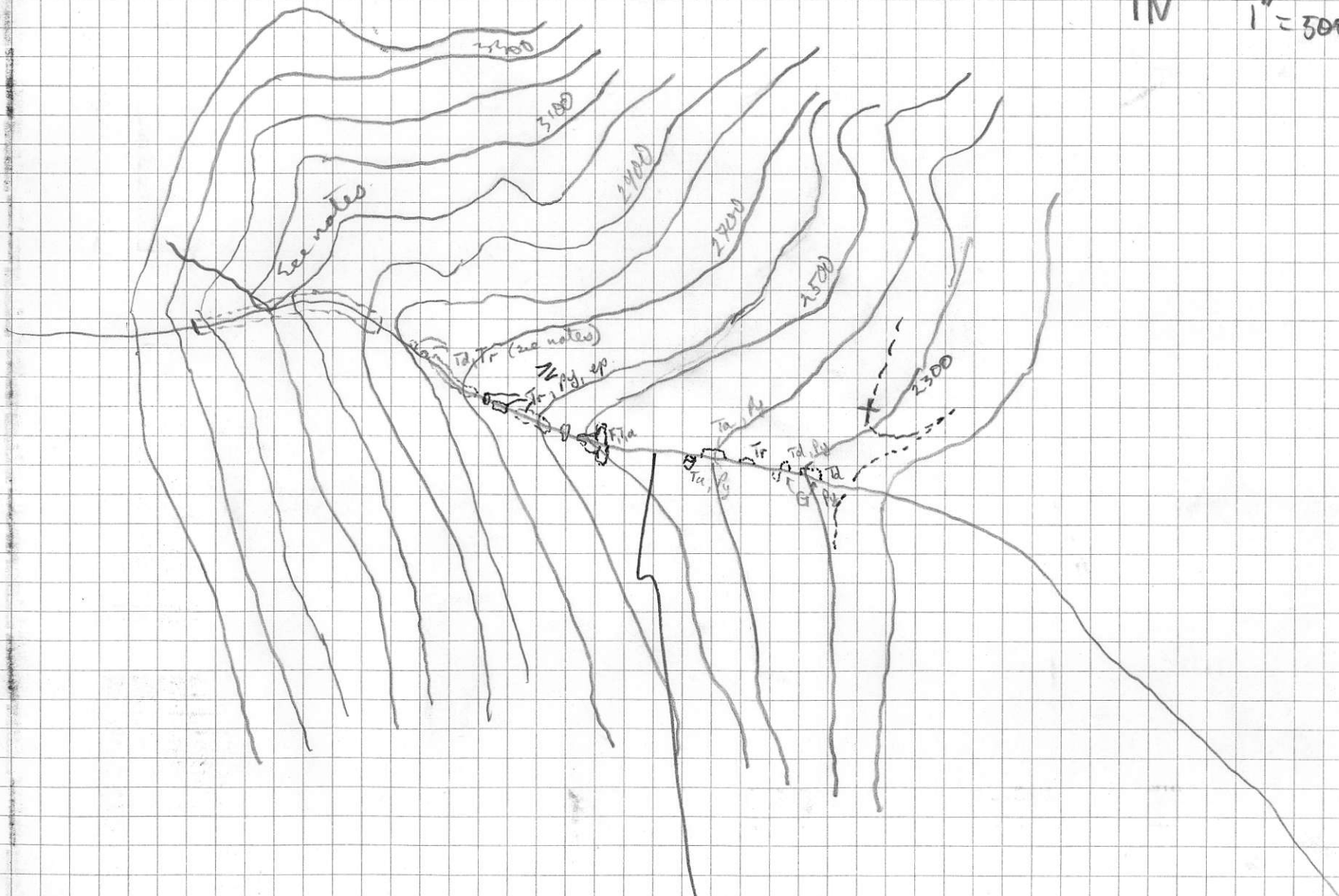
ash
Breccia (r)

Lanilli
Banded
some as (3)

841198
Eagle Creek

4N

1" = 500'



Flood contains Qtz Diorite, Fragmentals,
seds.



500'

2100'

2100'

2000'

edge
river

- Greywacke - Gr
- Tuff - T
- Flow - F
- Sediments - S

Prospector's
Trail

Td, massive
same pd.

Aggl

Td

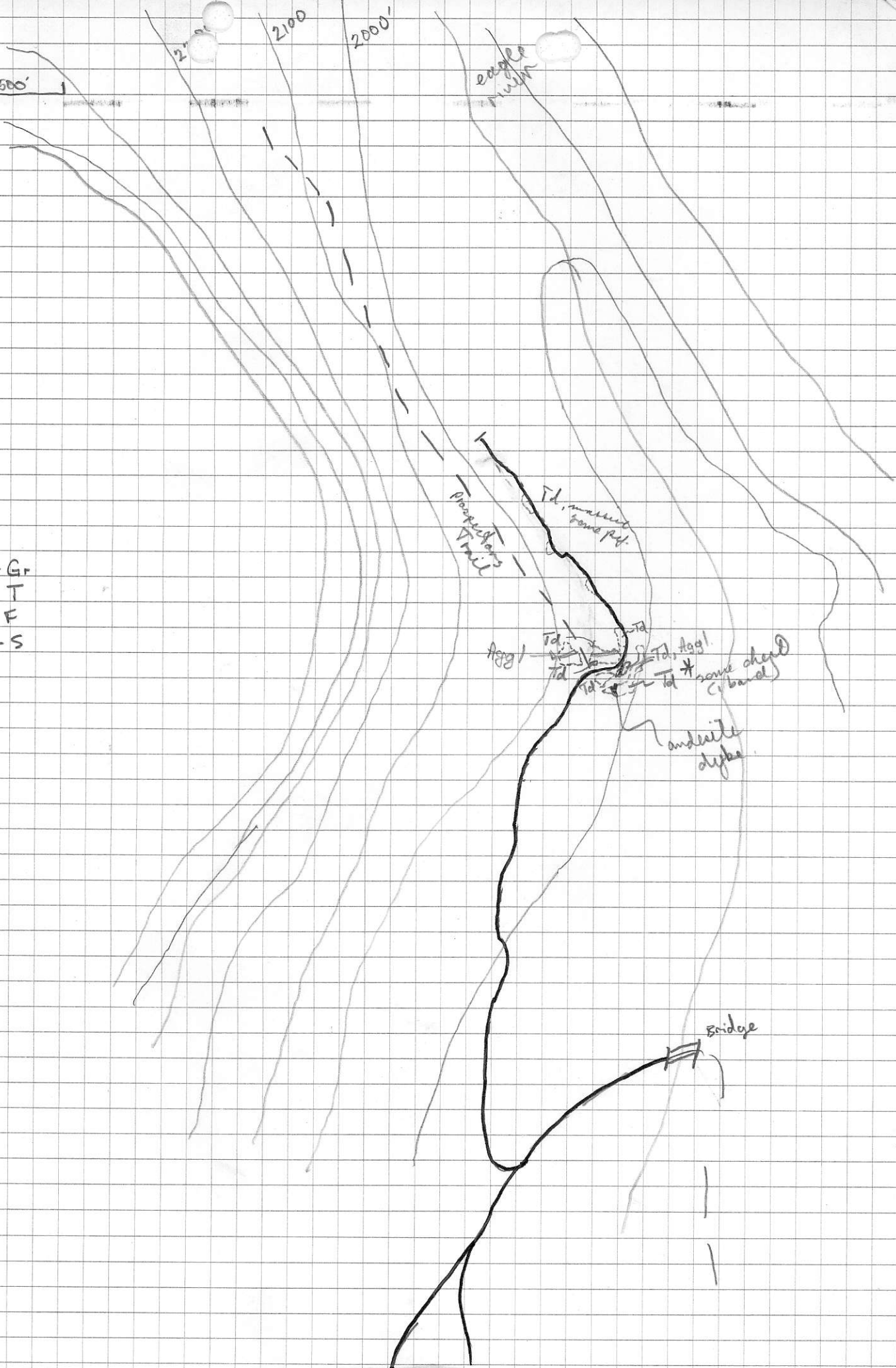
Td

Td, Aggl.

some chert
(barrel)

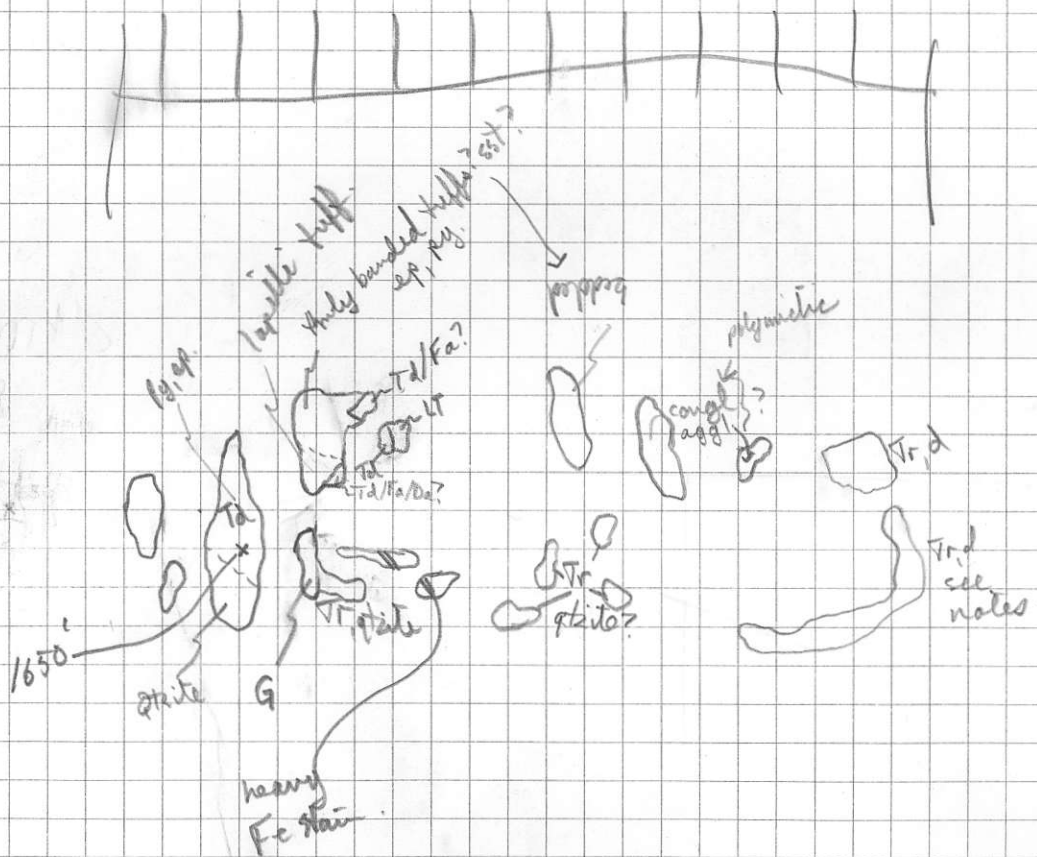
andesite
dykes

bridge



N ← 200' →

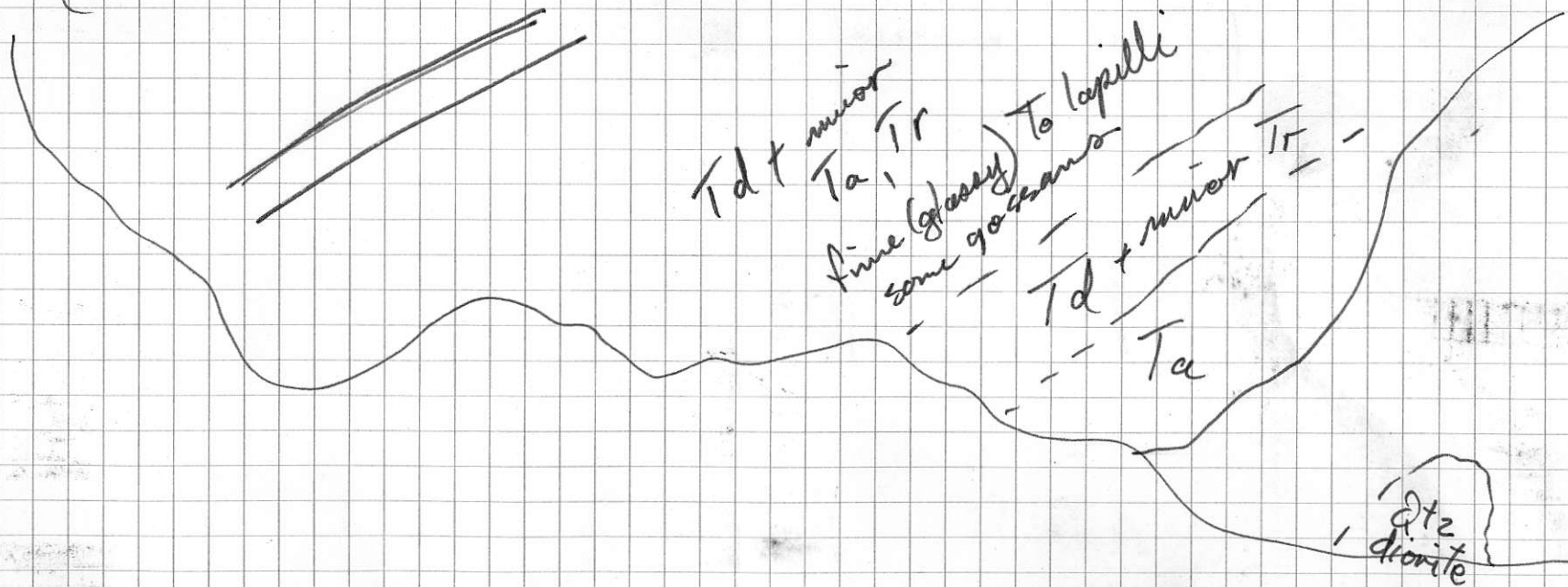
1050'

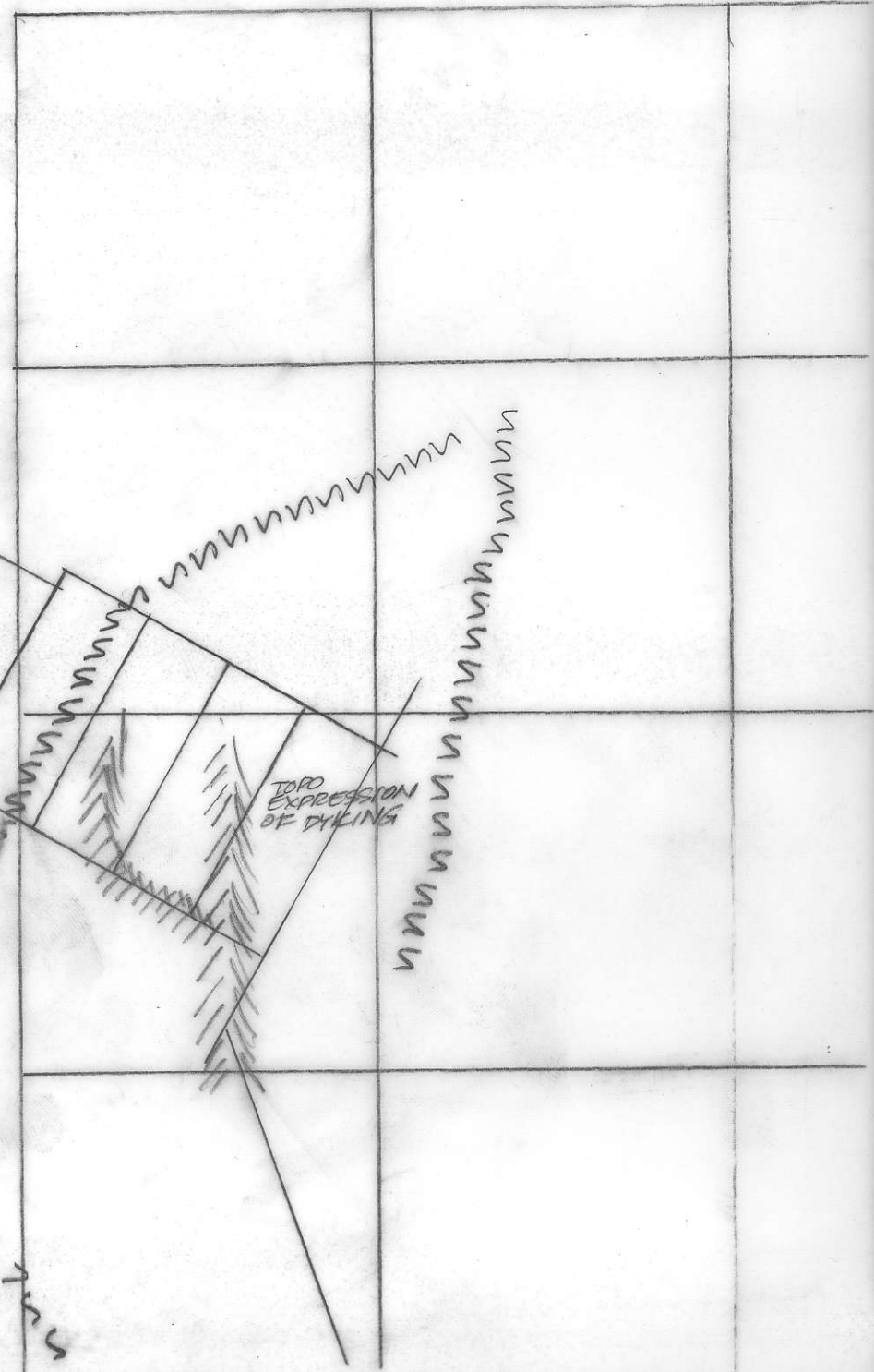
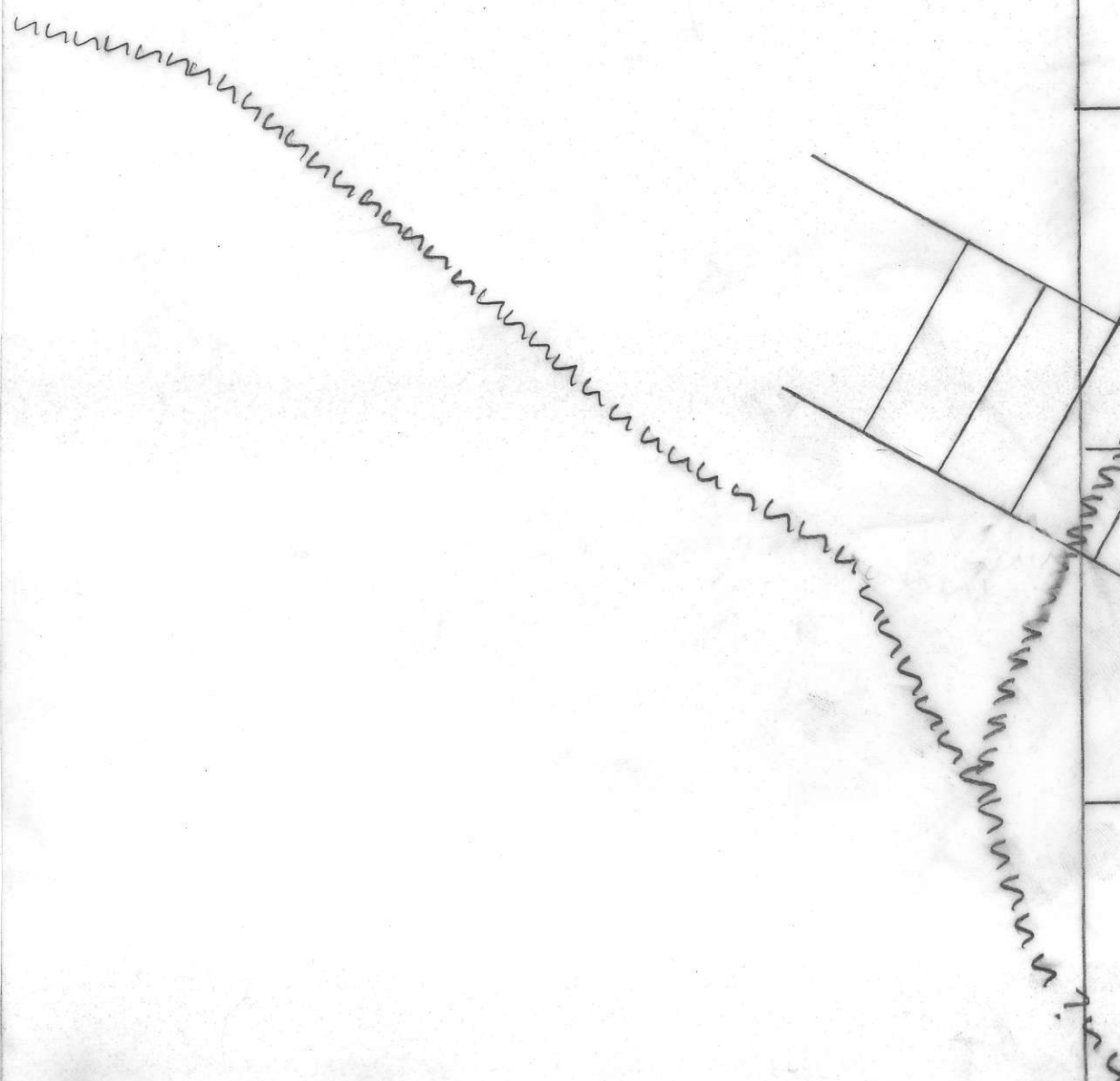


N.

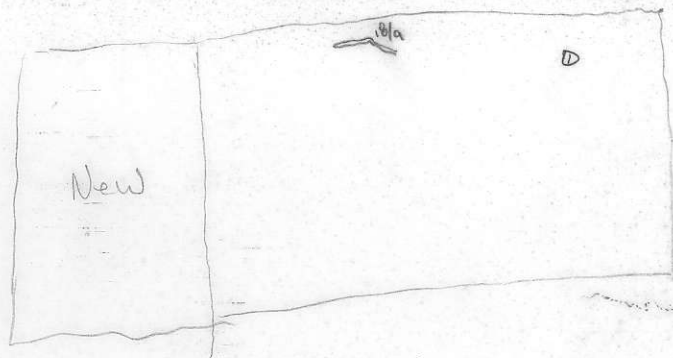
1700'

S.





TOP EXPRESSION OF DYING



x Fossil float

Gal

U Fine lates
(congl, breccia, silt, shale etc)

②

123
1719

10/19

10/19

④ ⑤

①

④ → ⑤ → ⑥