

**GEOCHEMISTRY DATA**

MAP: 104K

NAME: Franz Wohlgemuth

DATE: June 24, 1982 PROJECT: MS04

PHOTO NO.

TRAVERSE NO: 9 AREA: BARB CLAIMS

SAMPLE NO.	GRID LOCATION	C	R	T	E	S	L	P	H	R	O	R	P	H	COMMENTS	ANALYTICAL RESULTS				
FW252-170	10700 NW 0700 SW	1	2	-	2	-	4								many roots in soil					
2-171	10700 NW 0750 SW	1	2	-	2	-	4								some rocks in soil					
2-172	10700 NW 1700 SW	1	2	-	2	-	4								roots in soil very red soil (gossensous)					
2-173	10700 NW 1750 SW	1	2	-	2	-	4								many roots, some rocks red soil					
2-174	10700 NW 2700 SW	1	2	-	2	-	4								"					
2-175	10700 NW 2750 SW	1	2	-	3	-	4								some roots / no B horizon many rocks (angular)					
2-176	10700 NW 3700 SW	1	2	-	2	-	4								roots, small rocks reddish soil					
2-177	10700 NW 3750 SW	1	3	-	4	-	4								talus finds					
2-178	10700 NW 4700 SW	1	2	-	2	-	4								some rocks few roots					
2-179	10700 NW 4750 SW	1	2	-	1/2	+	4								many roots <sup>at B hor.</sup> no distinction between					
2-180	10700 NW 5700 SW	1	3	-	2	-	4								very poor horizon mixture of talus finds, B+C					
2-181	12700 NW 5700 SW	1	2	-	2	-	4								some roots in soil					
2-182	12700 NW 9750 SW	1	2	-	2	-	4								some roots in soil					
2-183	12700 NW 4700 SW	1	2	-	1	1	4								no B horizon small roots & some organics					
2-184	12700 NW 3750 SW	1	2	-	2	-	4								thin B horizon on talus					
2-185	12700 NW 3700 SW	1	2	-	2	-	4								some small roots.					
2-186	12700 NW 2750 SW	1	2	-	2/3	-	4								many small roots no distinct horizon division					
2-187	12700 NW 2700 SW	1	2	-	2	-	4								some roots					
2-188	12700 NW 1750 SW	1	2	-	2	-	4								"					
2-189	12700 NW 1700 SW	1	2	-	2	-	4								" very red soil					
2-190	12700 NW 0750 SW	1	2	-	2	-	4								many roots reddish soil					
2-191	12700 NW 0700 SW	1	2	-	2	-	4								some roots - reddish soil					

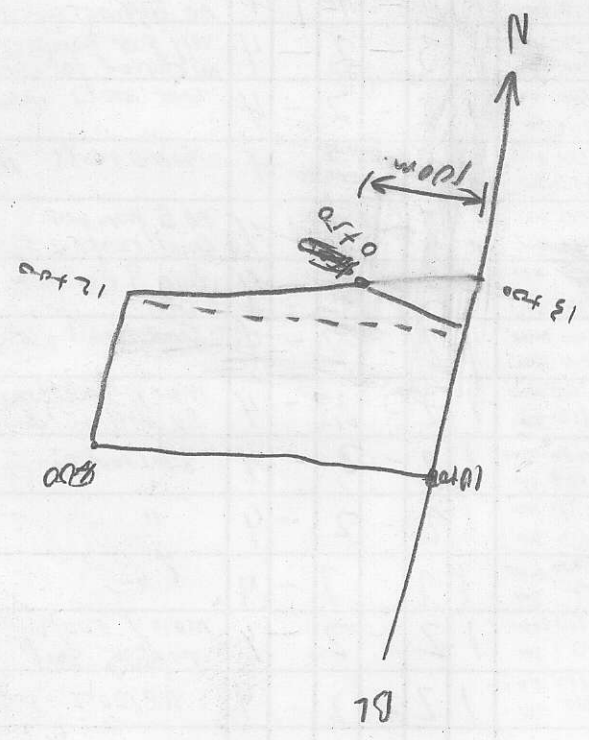
within claim

FW252-175

841150

GEOCHEMISTRY DATA

MAP NO. \_\_\_\_\_  
DATE \_\_\_\_\_  
PROJECT NO. \_\_\_\_\_  
TRAVELER NO. \_\_\_\_\_  
ANALYTICAL RESULTS \_\_\_\_\_  
COMMENTS \_\_\_\_\_





**GEOCHEMISTRY DATA**

MAP: 104K

NAME: Franz Wohlgemuth

DATE: June 27, 1982

PROJECT: MSOY

PHOTO NO. —

TRAVERSE NO: 11

AREA: Barb Claim

SAMPLE NO.	GRID LOCATION	C R	T E X	S L P	H R N	O R G	P H Y	COMMENTS	ANALYTICAL RESULTS					
FW2T2-216A	29400 NW 0400 NE	1	2	-	2	-	4	—						
2-217	29400 NW 0450 NE	1	2	-	2	-	4	Some roots						
2-218	29400 NW 1400 NE	1	2	-	1/2	1	4	no horizon / sample on talus slope with forest/gravel						
2-219	29400 NW 1450 NE	1	2	-	2	-	4	Some roots						
2-220	29400 NW 2400 NE	1	2, 3	-	4	-	4	talus finds / probably some B horizon						
2-221	29400 NW 2450 NE	1	2	-	2	-	4	rocks + roots in soil						
2-222	29400 NW 3400 NE	1	2	-	2	-	4	"						
2-223	29400 NW 3450 NE	1	2	-	1/2	1	4	rocks and roots on talus						
2-224	29400 NW 4400 NE	1	2	-	1/2	1	4	sample on a.c. soil on top						
2-225	29400 NW 4450 NE	1	2	-	2	-	4	some roots small rocks						
2-226	29400 NW 5400 NE	5	2	-	2	-	4	roots						
2-227	29400 NW 5400 NE	1	2	-	2	-	4	Some roots small rocks						
2-228	29400 NW 4450 NE	1	2	-	2	-	4	Some roots						
2-229	29400 NW 4400 NE	1	2	-	2	-	4	"						
2-230	29400 NW 3450 NE	1	2	-	2	-	4	some "A" horizon in sample						
2-231	29400 NW 3400 NE	1	2	-	2	-	4	"						
2-232	29400 NW 2450 NE	1	2	-	2	-	4	some roots						
2-233	29400 NW 2400 NE	1/3	2	-	1/2	1	4	mixture of A and B horizon						
2-234	29400 NW 1450 NE	5	2	-	2	-	4	very much like clay						
2-235	29400 NW 1400 NE	1	2	-	2	-	4	some roots						
2-236	29400 NW 0400 NE	1	2	-	2	-	4	—						
2-237	29400 NW 0400 NE	1	2	-	1/2	-	4	Some roots very little A horizon						
2-238	29400 NW 0400 NE	1	2	-	2	-	4	different colored soil black, brown, grey						
2-239	29400 NW 0450 NE	1	2	-	2	-	4	thick overburden						
2-240	29400 NW 1400 NE	1	2	-	2	-	4	"						
2-241	29400 NW 1450 NE	3	1	-	1/2	4	—							





**GEOCHEMISTRY DATA**

MAP: 104k

NAME: Franz Wohlgemuth

DATE: June 28, 1982

PROJECT: MSOY

PHOTO NO. —

TRAVERSE NO: 12

AREA: Barb Claim

SAMPLE NO.	GRID LOCATION	C	R	T	E	S	L	P	H	R	G	R	P	H	COMMENTS	ANALYTICAL RESULTS				
FW2T2-259	48700 NW 0100 SW	1	2	-	2	-	4								Some roots in soil					
2-260	48700 NW 0150 SW	1	2	-	2	-	4								"					
2-261	48700 NW 1100 SW	1	2	-	2	-	4								—					
2-262	48700 NW 1100 SW	1	2	-	2	-	4								some roots					
2-263	48700 NW 2400 SW	1	2	-	12	-	4								roots and rocks					
2-264	48700 NW 2750 SW	1	2	-	2	-	4								rocks (small) in soil					
2-265	48700 NW 3700 SW	5	2	-	2	-	4								" (almost like clay)					
2-266	48700 NW 3750 SW	1	2	-	2	-	4								roots / almost black					
2-267	48700 NW 4700 SW	1	2	-	2	-	4								thick overburden some A horizon					
2-268	48700 NW 4750 SW	15	2	-	2	-	4								almost like clay thick overburden					
2-269	48700 NW 5700 SW	1	2	-	2	-	4								rocks in soil					
2-270	46700 NW 5700 SW	3	2	-	1	2	4								marsh area					
2-271	46700 NW 4150 SW	1	2	-	2	-	4								some small rocks					
2-272	46700 NW 4700 SW	1	2	-	2	-	4								—					
2-273	46700 NW 3750 SW	1	2	-	2	-	4								some small rocks					
2-274	46700 NW 3700 SW	1	2	-	2	-	4								Some roots					
2-275	46700 NW 2750 SW	1	2	-	2	-	4								"					
2-276	46700 NW 2700 SW	1	2	-	2	-	4								—					
2-277	46700 NW 1750 SW	1	2	-	2	-	4								—					
2-278	46700 NW 1700 SW	1	2	-	2	-	4								some roots					
2-279	46700 NW 0750 SW	1	2	-	2	-	4								" wet area					
2-280	46700 NW 0700 SW	1	2	-	2	-	4								some roots					
2-281	47700 NW 0700 NE	1	2	-	2	-	4								thick overburden					
2-282	47700 NW 0750 NE	1	2	-	2	-	4								frozen soil					
2-283	47700 NW 1700 NE	1	2	-	2	-	4								—					
2-284	47700 NW 1750 NE	1	2	-	2	-	4								—					

