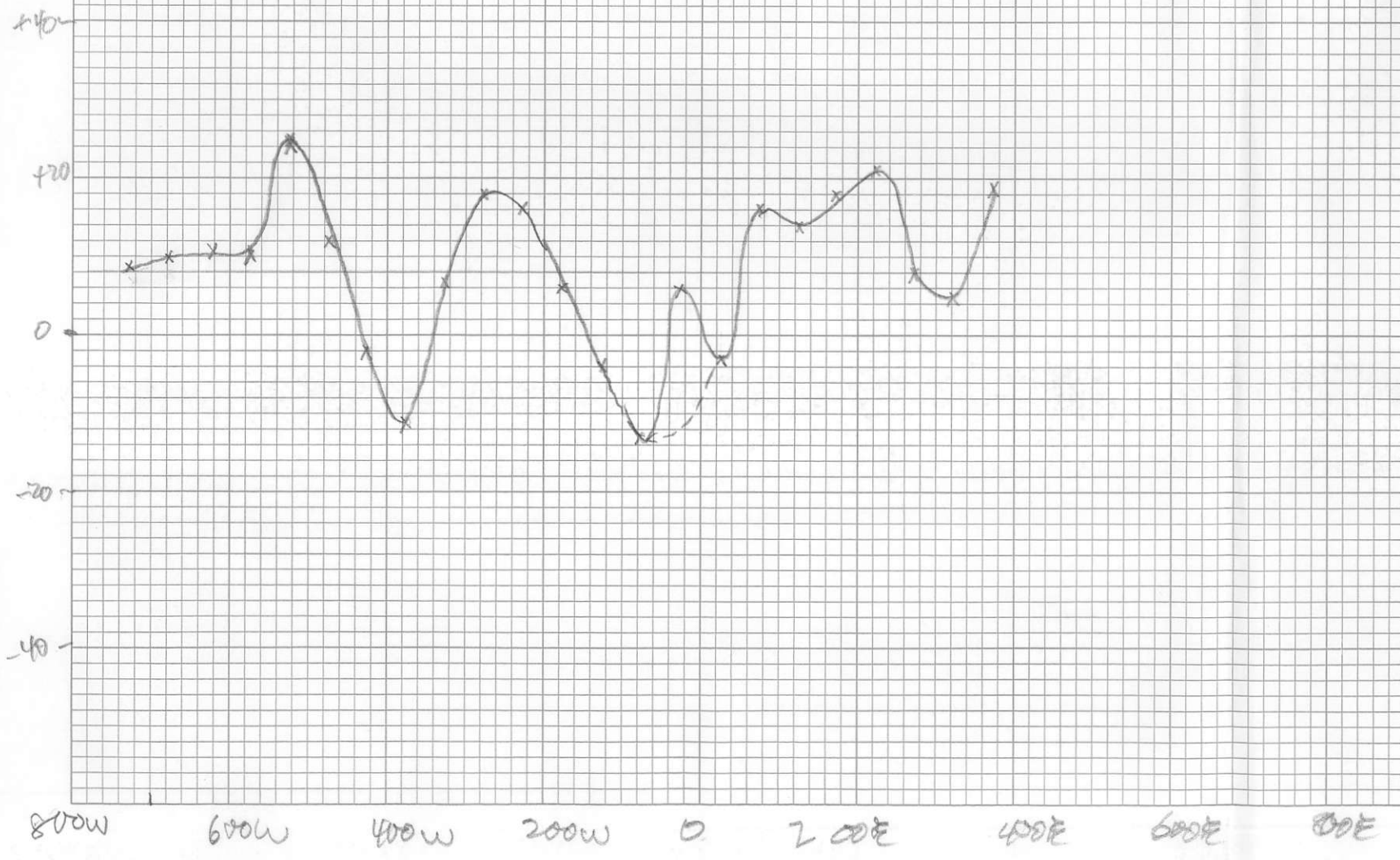


Agassiz L18 3555
using MPH conversion factors

841103
1981

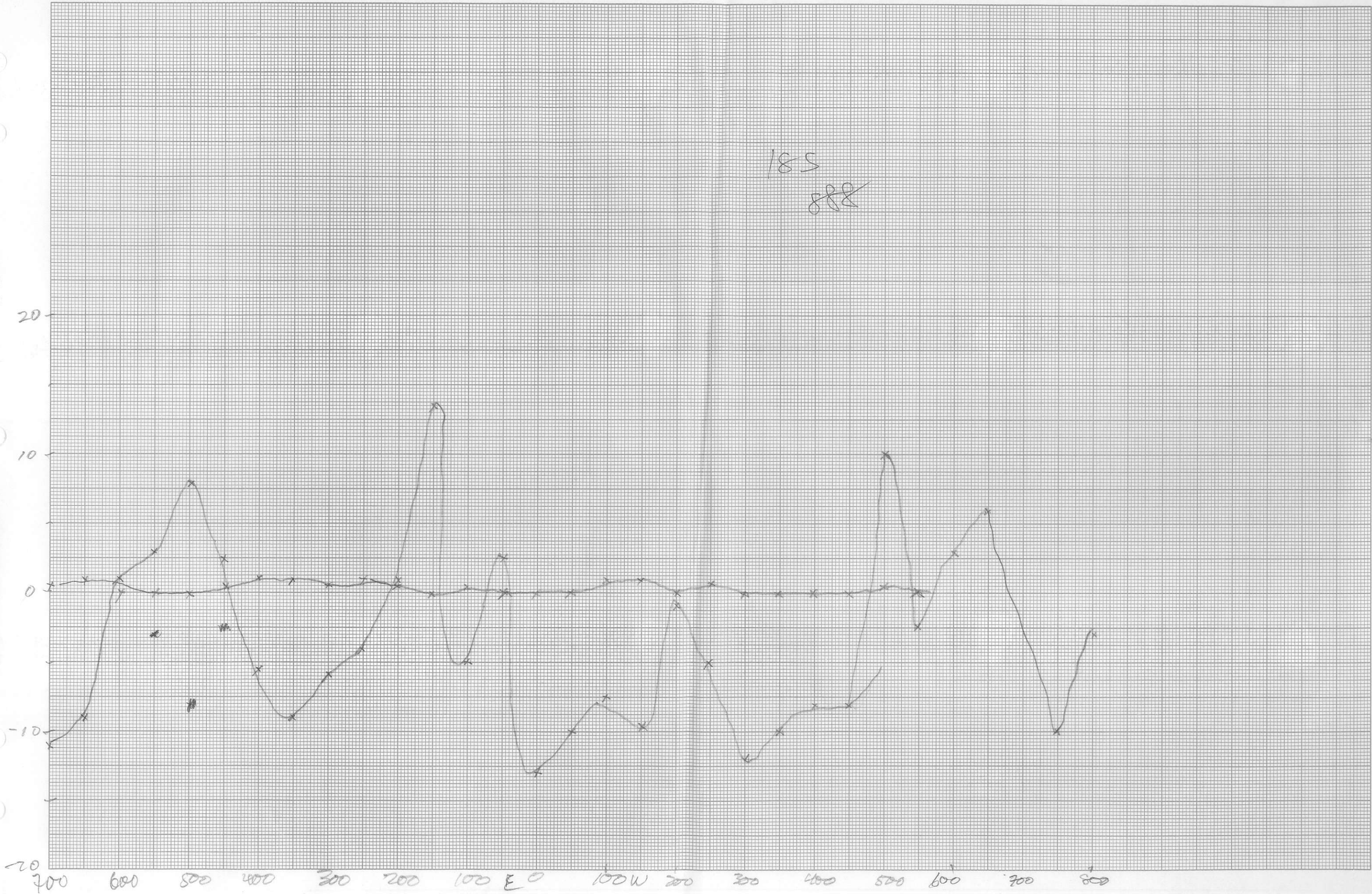
47 0703

KE 10 X 10 TO THE INCH 10 X 15 INCHES
KEUFFEL & ESSER CO. MADE IN U.S.A.



47 1513

K&E 10 X 10 TO THE CENTIMETER 25 X 38 CM.
KEUFFEL & ESSER CO. MADE IN U.S.A.



185
~~888~~

47 0703

10 X 10 TO THE INCH • 10 X 15 INCHES
KEUFFEL & ESSER CO. MADE IN U.S.A.



70 -30

0
10 30
20 20
30 10
40 0
50 -10
60 -20

x-x OP RAW
o-o ELRUV
ANGLE

x-x IP RAW DATA
o-o IP corrected DATA

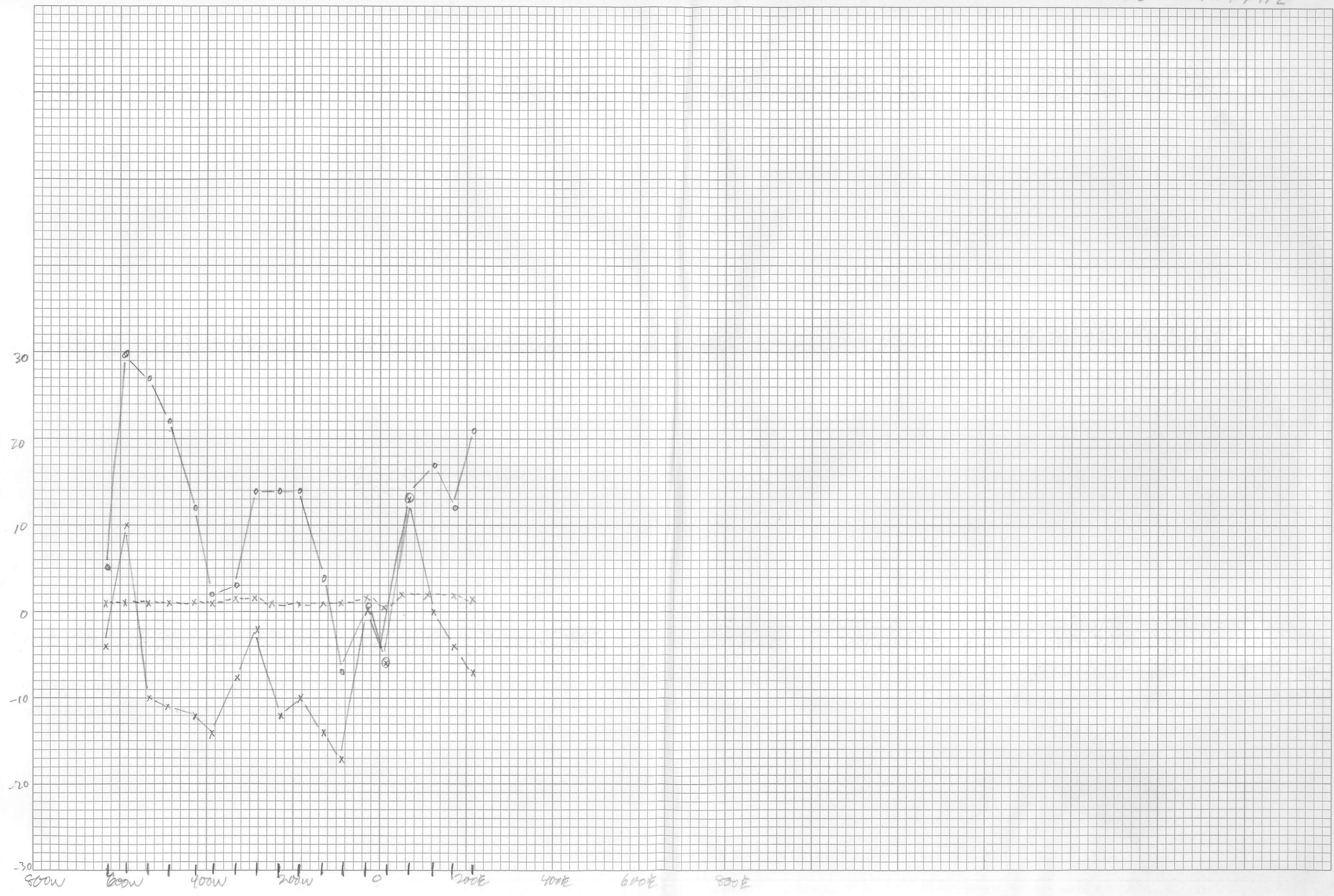
L20S

177742



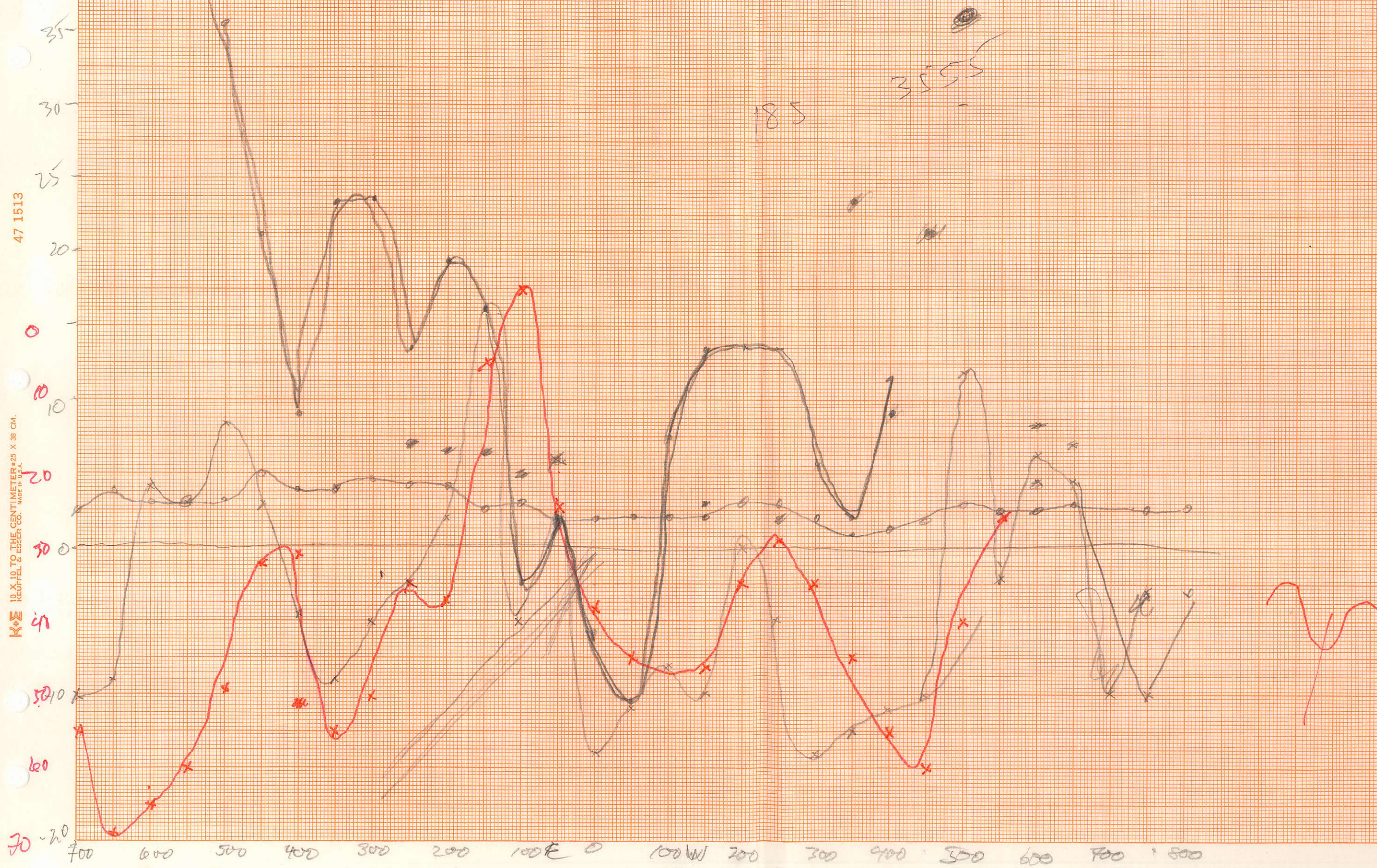
47 0703

10 X 10 TO THE INCH 4.10 X 15 INCHES
KEUFFEL & ESSER CO. MADE IN U.S.A.



47 1513

K&E 10 X 10 TO THE CENTIMETER 25 X 38 CM. KEUFFEL & ESSER CO. MADE IN U.S.A.

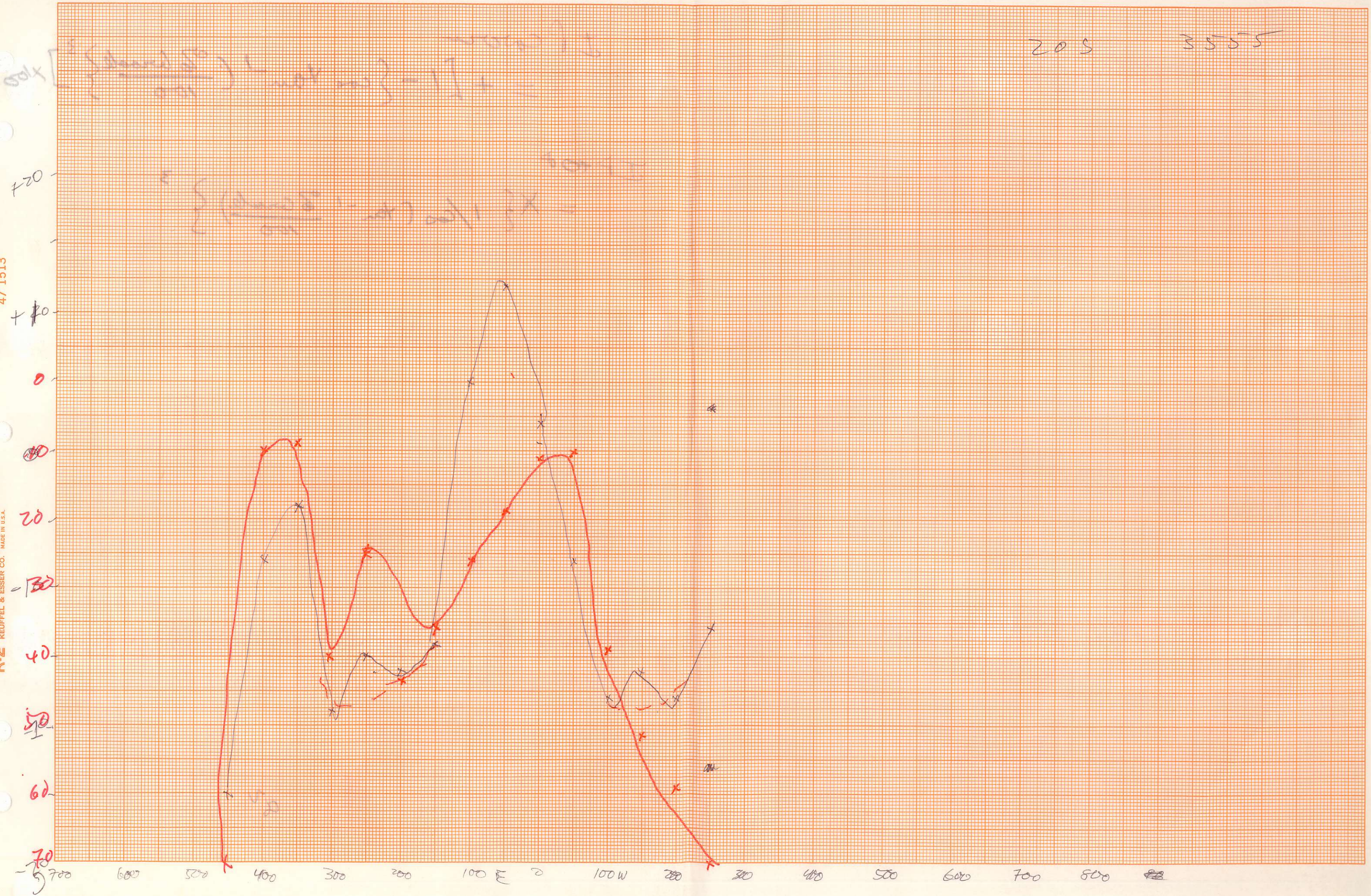


20 S

3555

47 1513

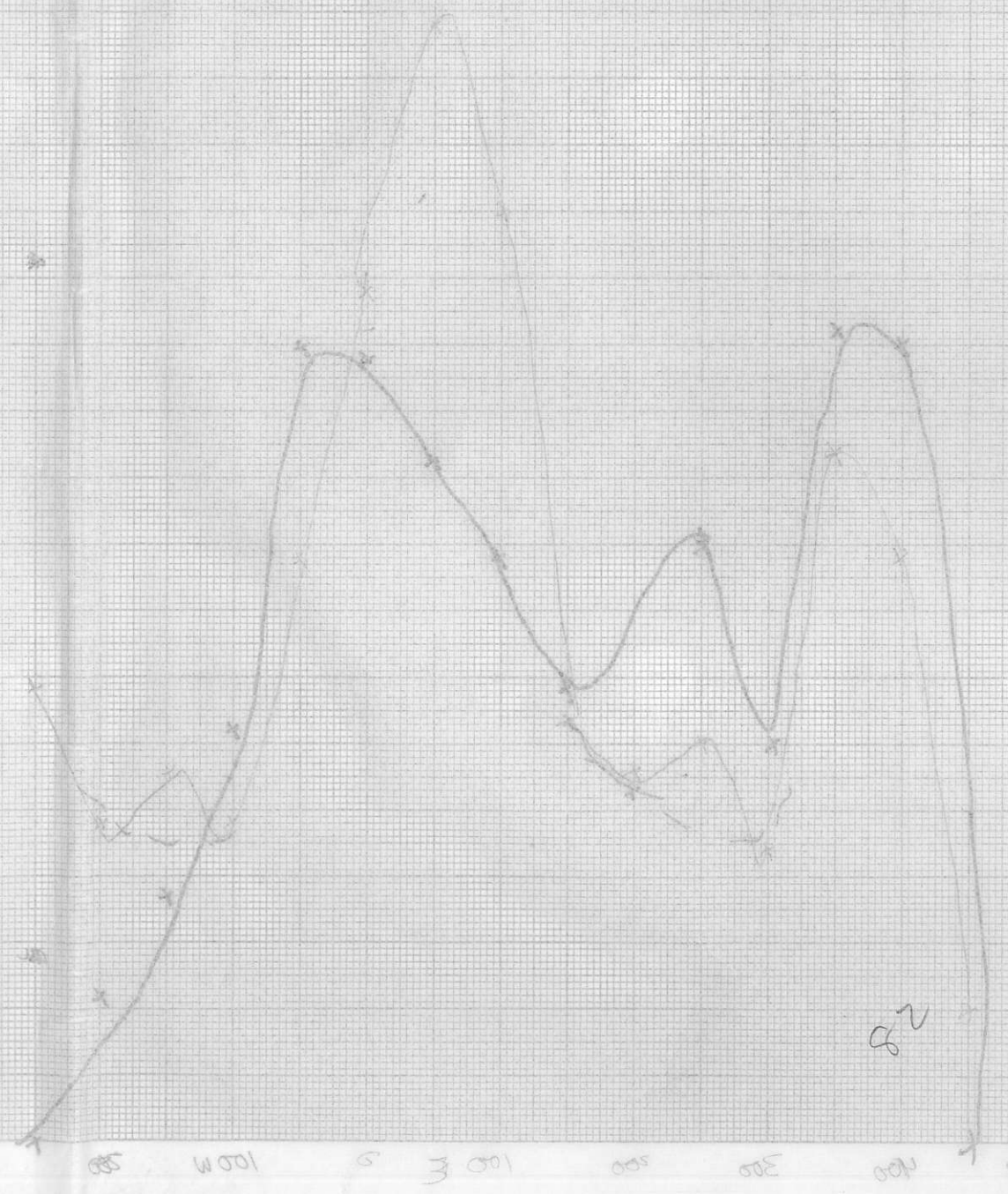
K+E 10 X 10 TO THE CENTIMETER • 25 X 38 CM. KEUFFEL & ESSER CO. MADE IN U.S.A.



205 205

$$IP_{cos\theta} = + \left[1 - \left\{ \cos \tan^{-1} \left(\frac{\sigma_{\theta} \text{ broad}}{100} \right) \right\}^3 \right] \times 100$$

$$IP_{100} = X \left\{ 1 / \cos \left(\tan^{-1} \frac{\sigma_{\theta} \text{ broad}}{100} \right) \right\}^3$$



82

41 1213
K&E KETCHUM & EBERHART CO. MADE IN U.S.A.
K&E 10 X 10 TO THE CENTIMETER 38 X 38 CM