

Field Notes by:

Jim Chapman
April 1978

841037

1

3000 ft.

(P)

grey bl. med grt, large up to 5mm
anhedral grt in h/d. (eu-sub),
up to 1.5 cm, py, magnetic

April 15

Salmon River Inn	32.5	
White Riv. Main	37.8	
Victoria Bridge	47.8	
Vic 1, turnoff	48.0	
100 yds from Cr.	49.1	
Sample site	49.7	GL 78-16
Vic 2, turnoff	54.8	
V 5	55.3	

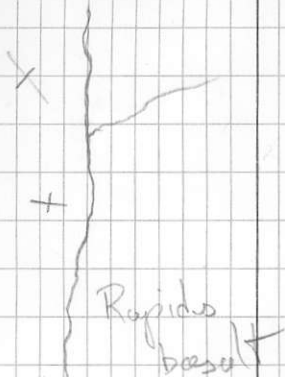
- $\frac{S30E}{56E}$ \rightarrow block shaly arg w cal. veining
- 6' thick bed gray lms w dissempy.
 - banding of lms in interbedded lms & arg.

V7 site

April 16.

- at waterfall greywacke N42 E / 90
- just past trib. N10 E / 90
- thinly laminated bl. arg. N15 N / 40
 - + grey fg ls.
 - + N30 E / 70 W massive grey r?
- calcareous greenstone w py
- calcareous bx. w py.
- bedded arg.

Waterfall



Rapids
basalt

falls

40

major fall is 100' looks like org

V8 site

April 17,

- samples from section across 7m of oc. samples taken every 0.5 m includes org & lms.
- from bridge to falls 75m every 1m samples ①-④
- on left hand creek, chip sample across 4' org 100' up stream from bridge ⑤
- second chip sample 10' org at 125' from bridge ⑥
- third ⑦ 5' width in White R 140°/90
- fourth ⑧ at 1.7 mi from bridge in small ck. 4'

Apr 18, 78

V12

A - chip sample across 3.5 ft
of org. at uppermost
showing in creek 160/85 E
py mine

B - chip sample across 4. ft
of org thin bedded
150' downstream from A
155/90 minor py. 10t
small fib

At junct. 20.75

Stream at 21.5

21.9

Junct. at 23.7

24.0

28.1 at Greenstone Dr

29.8 at turn off

31.7 at fork

32.9 " sample spot

33.6 at claim post, no tag

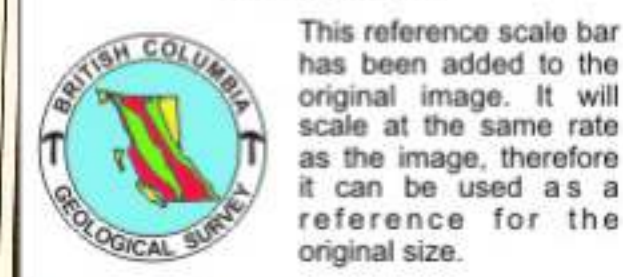
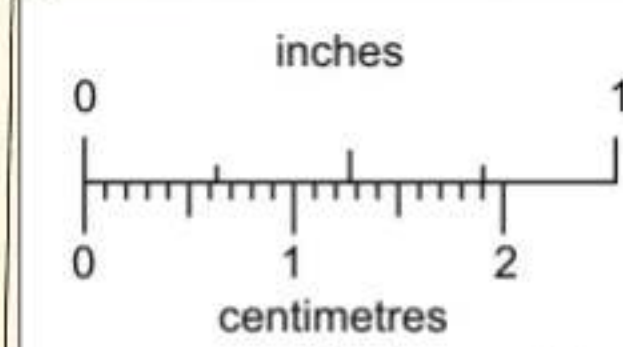
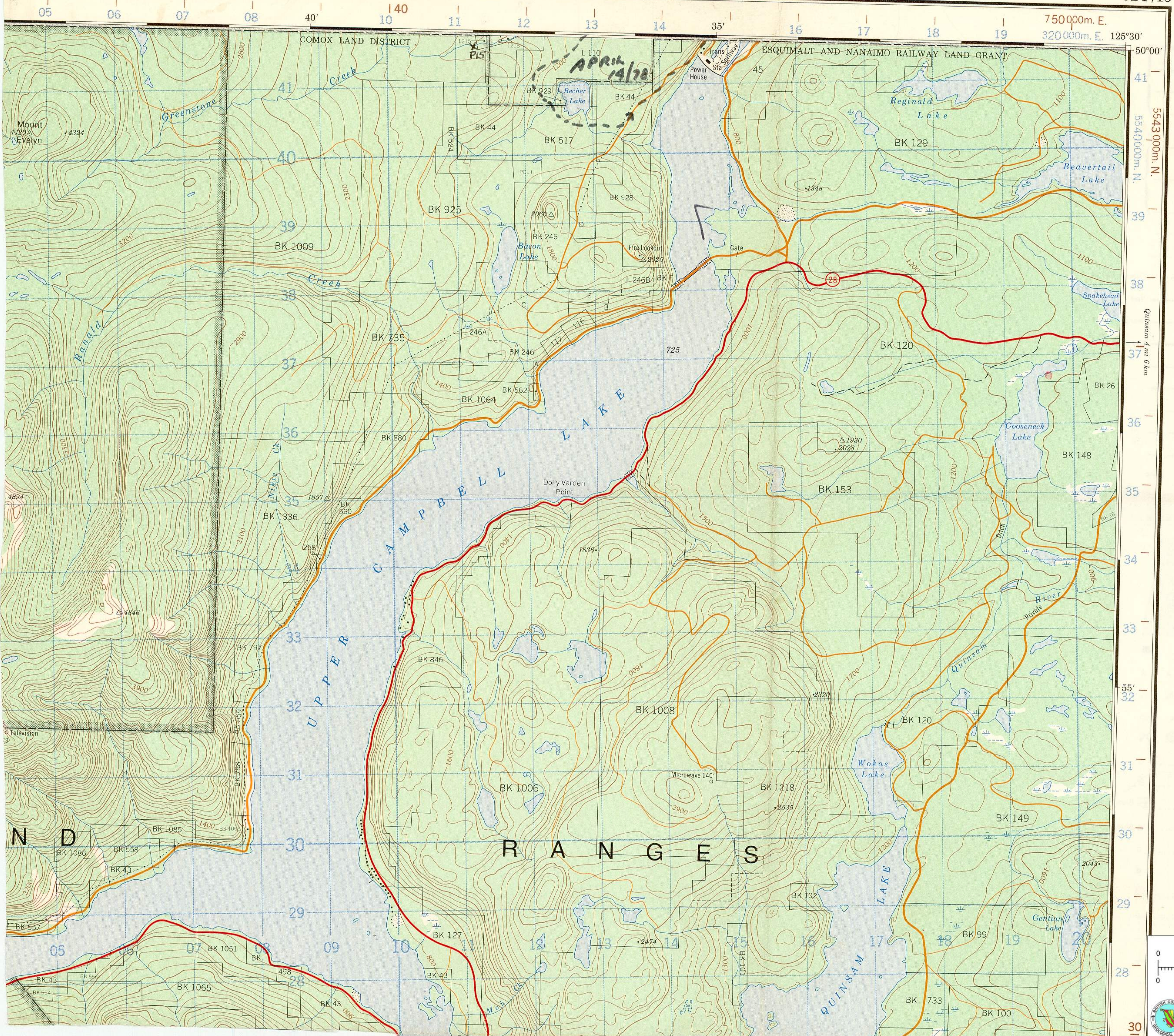
- 34.0 E-W claim line

34.3 arrived at Greenstone, 1380',
recently logged

Pict #

taken from truck at 1/250

30



This reference scale bar has been added to the original image. It will scale at the same rate as the image, therefore it can be used as a reference for the original size.