

841021
King-Courte

DA
15 May
KCLine
(5mi N of
Gospel Pt)

KC

DA May 15 /81

DA/JM KC RECO LINE 15 May

(Long NW str. ck)

Start 1100' on sw Indg on
NE side of ck.

- ① Am dy, r. on frags.
& A "sandy" amy
- ② Am bky \varnothing h. wthy

681m Main ck. Turn L.

KC - DA - ①

A in ^{both} banks soft, w/r on
frags

At, rounded frags w/r surf
to 4mm

Δ is A + 10% R

③ A fg m

④ " "

LT. shmg in ck 135v

④ A? h, shrd, L bank 939m

+200m

A E? R bank

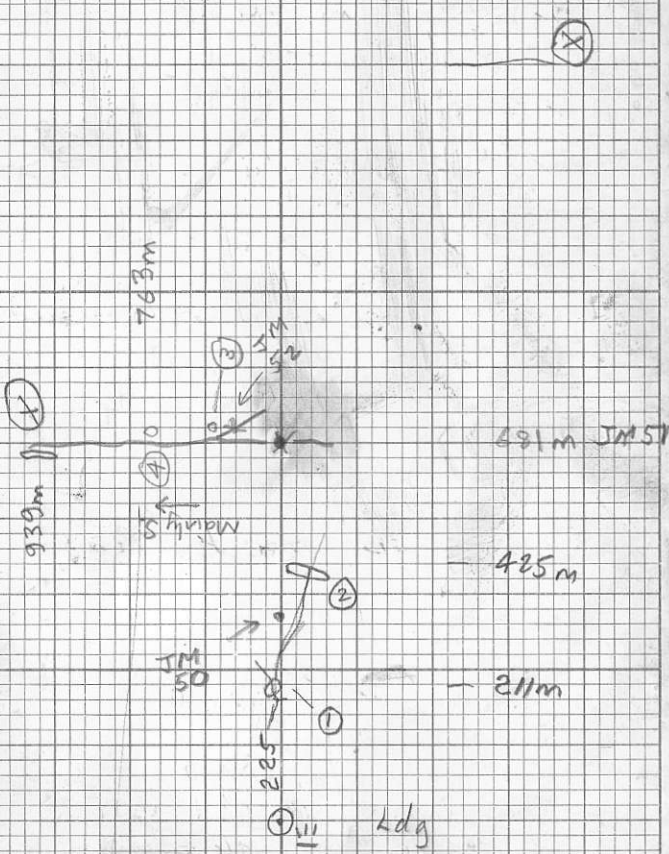
⑤ 1000m D?? on R.

1070m platy A on R.

117 / 3:0 N

A, m shrd 20v on L.

+100m A, sl. platy on L.



D.A.

15 May 2/

1300m

A, 5x5, r m-uf on R
KC-DA-②
ck row ~ 165 - 170

1440m

Δ, 5% R, r
mixed R sa. DA-③

1530m

d/c 5x20 on L
A-D, f.g, sheeted 165/65E

1550m

Trib from R m-sm
silt site
shrd. A 50' L in trib
+100' " " a 5x5
L+??!

1780m

Some < R, bk, Δ from
L bank
100' d/c A, a on R

1855m

v. min trib from R w/
all < sm. R Δ

From Δ some A seems
A ag - ATb

2810

Op in L bank R - bk/gn/gy
- 50x10

2070m

" " 5x10 as last
Δ in ck m mdd butt R
cut by dk gy bxd

g units. DA - ④
ck now ~155°

2200m R bank 30x5 R bk, bxd.

2345m ab L R Δ, bdd, n
Fb?

2500m pass. ① on log in stream
(1skid - min^m space)

ab. R Δ - pyc & flow, sub L

2700m on R 5x5 sub a/c R bk

2865m start a/c on R (end + 100')

R bk, pyc ✓
smoking 155/65 W

② 2920m D t skp bdd. but n

3020 9m +50' A, m
L platy A ~horiz

+150' A +? 5x5 on R

+50' A t. 5x5
L sandy, m.

+50' A hard, blocky, platy

@ 3100m bdg? 70/155

1550m FO

D.A.

15 May / 3

A, ~ m along R bank for 100'

3300m H, tight but gravelled ..

3380m ^{med.} Trib from R, 114°

50' A, ~ m, soft

Δ ab, R, wh, L ~ r

L DA - (5a)

Δ, common, pyc., gn. alt.,
bright DA - (5b)

1 geode

Then Am as last on R

for 50', into

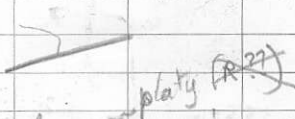
A^m, in gorge for 100'
to 3460m

3612m (H) below slide

A 20x30 on L. m

3700 for 100' A on R r, otherwise
bland

3785 small trib from L.



3800 R bank A 200' L sub hor
to 34/25W

3930m A @ trip 5x10

3980m A dry area TO / 705

~4000m A? spot on other (R)
side ch. low upstream
dip. platy?

4700m R, bk wh w/ha str on R
5x50

5500m 5x10 DF? & str

5550m A dry &

5930m Δ R dry w/py ←

6150m r zones on S side ch
geol begins to loose
good

D. A.

15 May / 4

R. D. PENHALL LTD. MADE IN VANCOUVER, CANADA
DUKSBAM WATERPROOF

METRIC
FIELD (S)

KC JM May 15th

50 light brown clay

51 silt 681m

52 silt + rib 741m

53 silt main 1000

54 silt main 1300

55 silt + rib 1587

56 silt main 1890

57 S main 2206

58 S M 2500

59 S M 2800

60 S M 3100

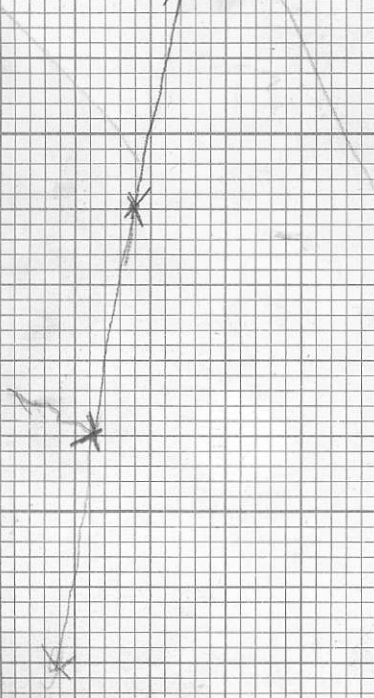
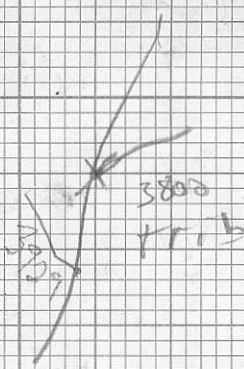
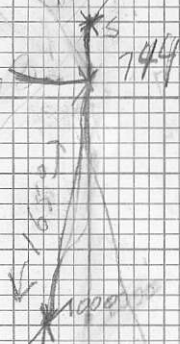
61 S M 3530

62 coarse trisilt 3800

KC

JM

15 May



Project	NTS	Scale 1:10,000	Page 1 of 2	Traverse
Sampler DA (JM)	Location, Target (words) Long NW trending ck. (Trib. to Gospel ck)		Sample Nos	
Date 15 May	photo no.		Cert. Nos	

W.S. - 2999 (11)
ATTITUDES
(100/40 N.)

SANDSTONE
SILTSTONE

CONGLOMERATE

VOLCANIC

CHERT

SHALE

LIMESTONE
DOLOMITE

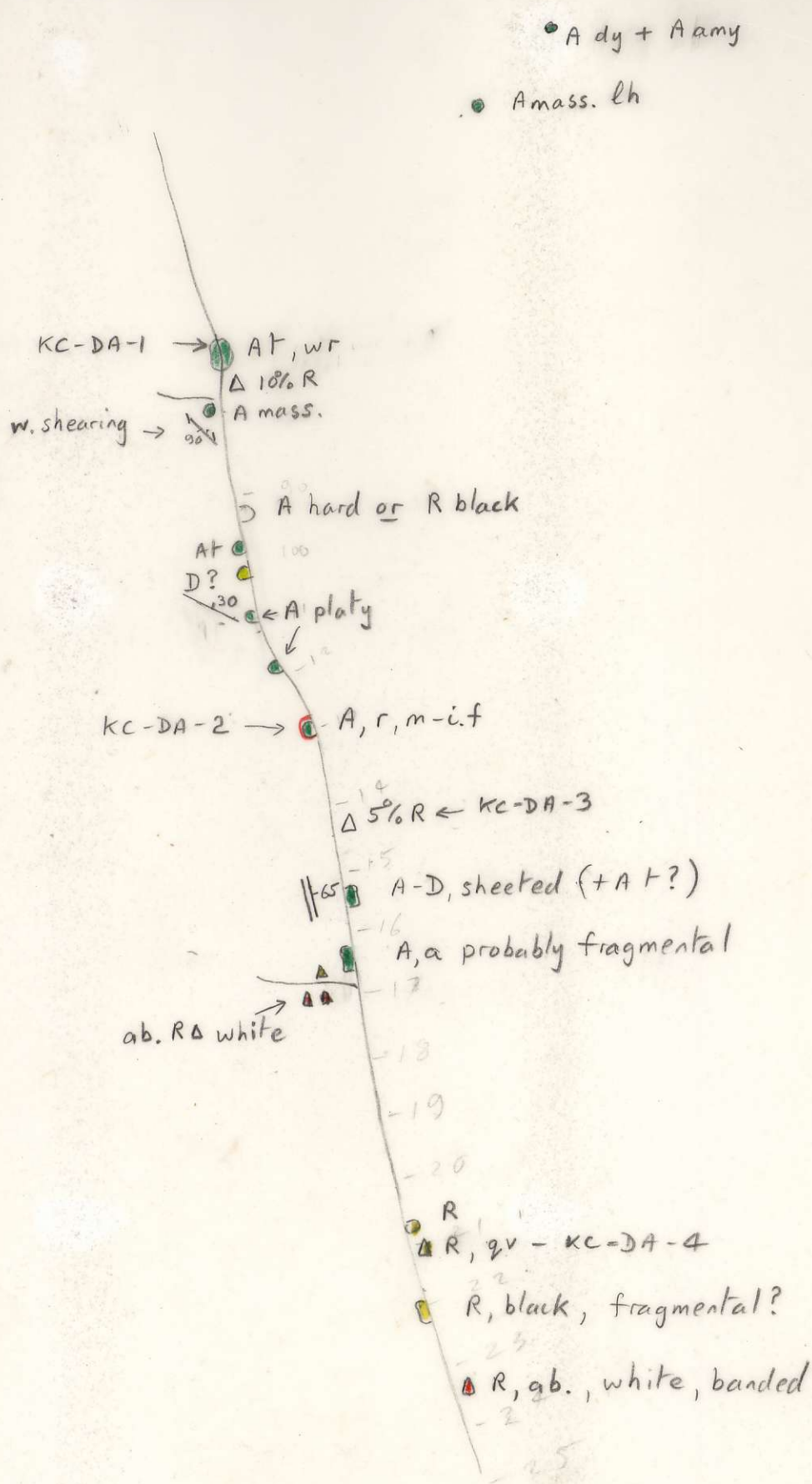
INTRUSIVE

GOSSAN,
MINERALS

SPECIMEN SITE A.B. ...; DO NOT WRITE ON OTHER SIDE OR USE COLOURS

DON'T FORGET CONTOURS, DRAINAGE, NORTH ARROW, LAT/LONG, SAMPLE SITES, WORKINGS, TRAILS, GOSSANS, OBSERVED GEOLOGY: DEFINED — INFERRED - - - ASSUMED.....

SILT X SOIL ● ROCK ■ PAN △ WATER ○



ASSAY: GEOCHEM: Cu Mo Pb Zn U W

WSP-999111
 ATTITUDES
 100/40 N

SANDSTONE
 SILTSTONE

CONGLOMERATE

VOLCANIC

SPECIMEN SITE A.B...; DO NOT WRITE ON OTHER SIDE OR USE COLOURS

CHERT

SHALE

LIMESTONE
 DOLOMITE

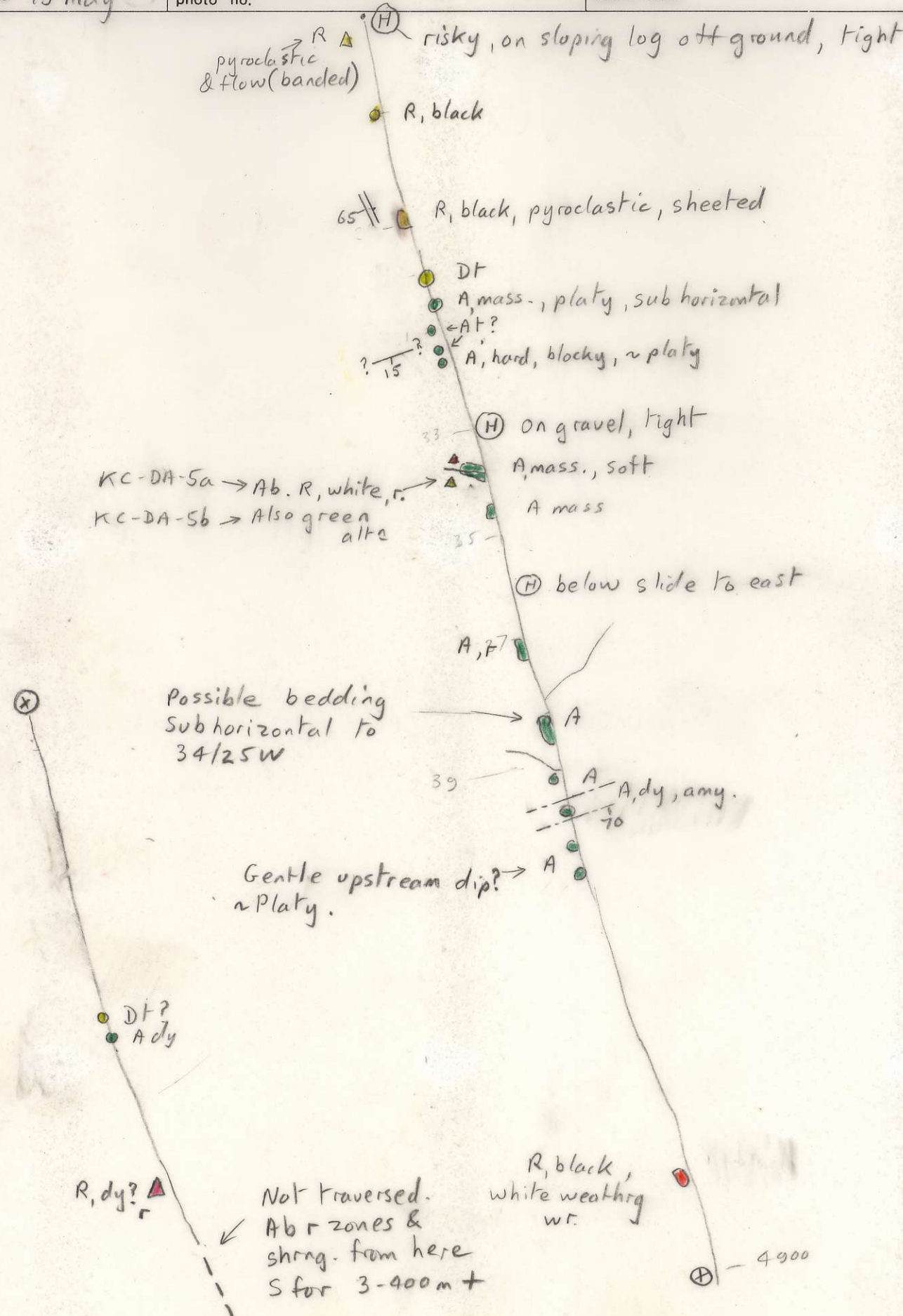
SILT X SOIL

INTRUSIVE

GOSSAN,
 MINERALS

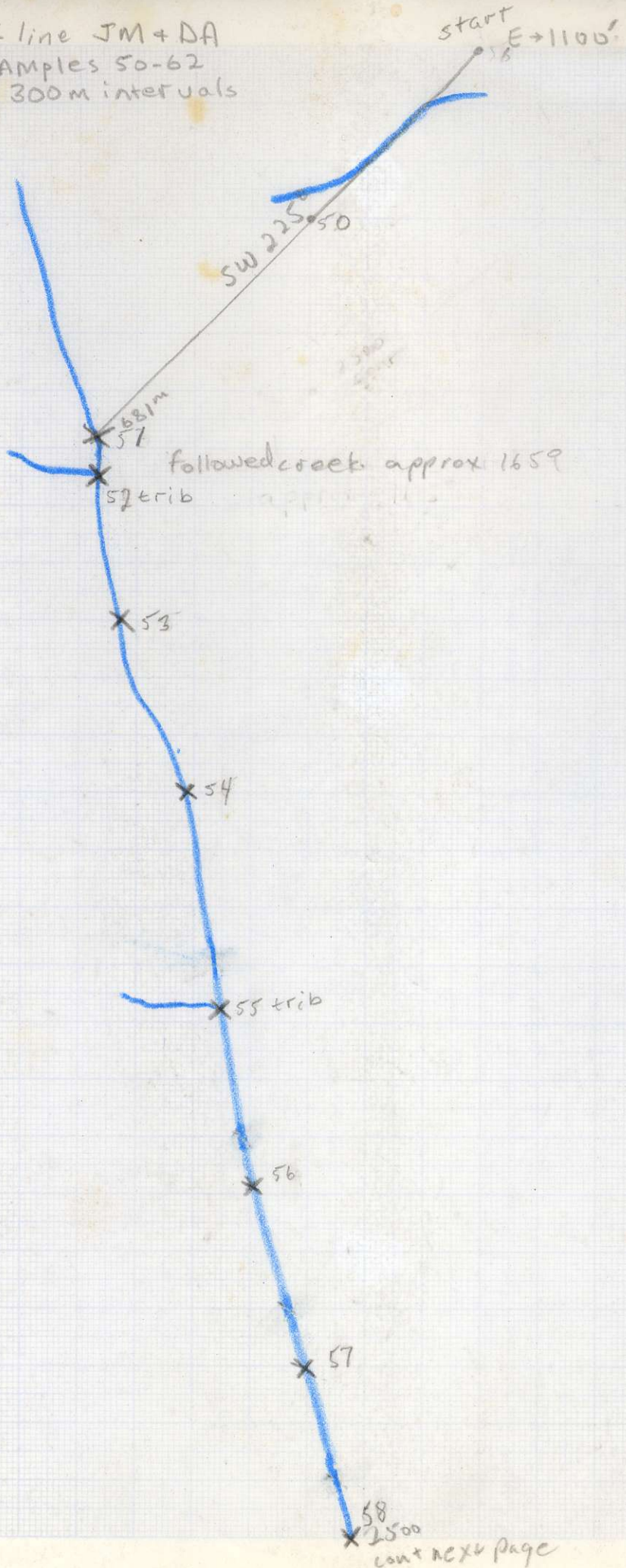
DON'T FORGET CONTOURS, DRAINAGE, NORTH ARROW, LAT/LONG, SAMPLE SITES, WORKINGS, TRAILS, GOSSANS, OBSERVED GEOLOGY: DEFINED --- INFERRED --- ASSUMED.....

Project	NTS	Scale 1:10,000	Page 2 of 2	Traverse
Sampler DA+JM	Location, Target (words) LONG CK., TRIB. TO GOSPEL CK.		Sample Nos KE-DA-1 to	
Date 15 May	photo no.		Cert. Nos	



GEOCHEM: Cu Mo Pb Zn U W ASSAY:

15 May KC line JM+DA
SAMPLES 50-62
300m intervals



Sample Nos?
Not clear to
draftsman
which is begin.
& which end
silt on which
creek?

58
2500
cont next page

15 May cont.

KC line JM + OA

