

841020
King-Courte

P. FAGERLUND

K. C. REGIONS

MAY 11 - 21

1981

GEOLOGY

KC

PF

May 11 / 81

PF

May 11, 81

RC Regional

0000

① 0200 Andesite. Maybe Float

(1800 feet)

② 0240 Rhyolite Med. fract.

KC-PF-①

(1700 feet)

Some porphyritic
 Some andesite float
 Some sandstone float

③ Vesicular Andesite float
0300 With Pyrite.

④ Andesite (~ Dacite)

0350

(1700 feet)

thin veining

⑤ Rhyolite? float

0375

(1600 feet)

Dacite with pyrite

⑥ Andesite float

Also And. outcrop

KC-PF-②

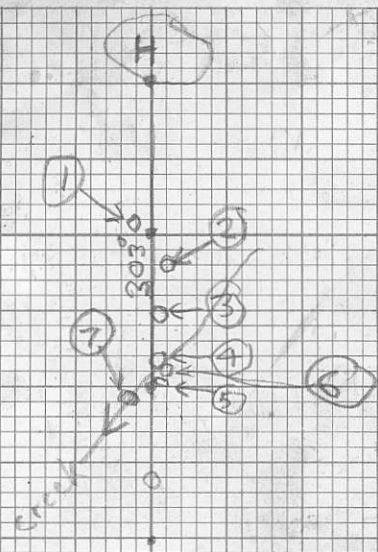
intense fracture, rusty fractures

Some thin veined rhyolite
 conglomerate float

⑦ Sandstone float

(1500 feet)

Rhyolite float



PF May 11, '81 King-Courte Regional

(8) 0550 Dacite? sandstone? float

1450 feet

(9) 0550 Porphyritic Rhyolite float

(10) 0550 Porphyritic Rhyolite outcrop

(11) 0575 Porph. Rhy. float

Green Sandstone float

(12) 0600 light green sandstone float

1350 feet with narrow veins

Vesicular Andesite KC-PF (3)
float

(13) Dark green sandstone (andesite)

much narrow veining

(14) Andesite outcrop

med-blocky fracture

white-gray weathered surface

some granite (diorite) below

(15) Dacite outcrop

1200 feet

(16) 0750 diorite-granite float

1100 feet very crystalline

(17) Andesite float

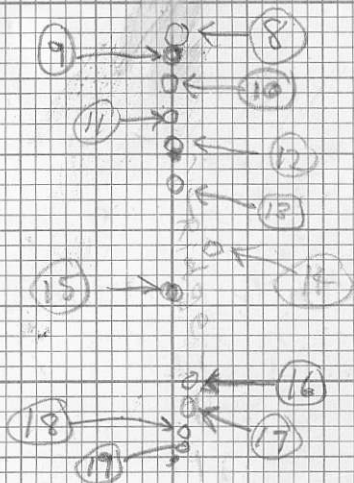
(18) Vesicular Dacite with pyrite
(amigdaloidal)

RED PENHALL LTD. MADE IN VANCOUVER CANADA
DURSBAM WATERPROOF

METRIC
FIELD (S)

• 400 M.

305



PF, May 11, '81 King-Courts Regional

(19) 0775 Andesite outcrop

(20) 0780 Sandstone & Rhyolite
(1050 feet) float

Sandstone outcrop KC-PF-4

(21) 0820 Andesite outcrop

(22) 0850 Vesicular andesite float

(23) Ves. and. outcrop.

(24) Andesite float.
(900 feet)

(25) Dacite-Rhyolite float

(26) And. float.

(27) And. float.

(28) Course grained and. - dacite
float.

(29) 0175 Andesite float

(650 feet) some narrow veining

Dark blue sandstone outcrop

Rusty fractured Rhyolite float.

(30) 1210 Rhyolite outcrop

(600 feet) rusty fractures, med fract.
also dacite outcrop

(31) sandstone outcrop

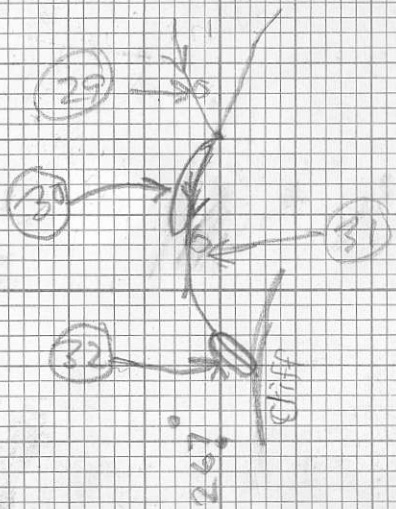
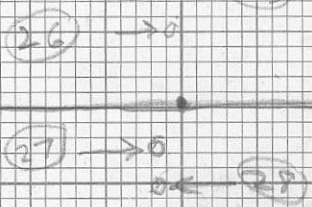
R. D. PENHALL LTD. MADE IN WINNIPEG, CANADA
DUNSBANK WATERPROOF

METRIC
FIELD(S)

700 M.



303°
267°



PF. May 11, '81 King-Courte Regional

(32) 1350 Andesite outcrop.

560 feet much pyrite

Rhyolite-Dacite outcrop.

KC-PF-5

(33) 1410 Sandstone outcrop, massive

→ Cut by pyrite rich rhyolite

KC-PF-6 rusty fract.

(34) 1435 ? sandstone

200 feet

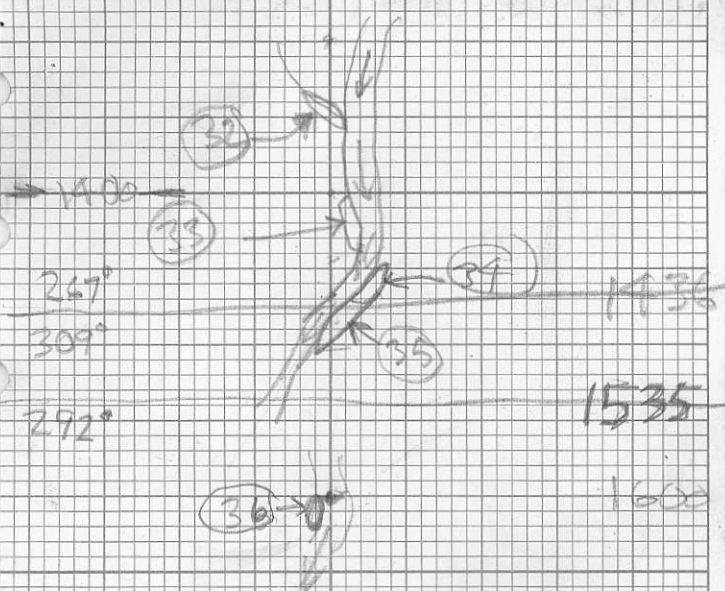
(35) 9 sandstone?

andesite? with rusty fract.

(36) calcite vein fault in

andesite KC-PF-7

R. D. PENHALL LTD. MADE IN VANCOUVER, CANADA
DUKESMAN WATERPROOF



14:00

267°

309°

292°

32

33

34

35

36

14:36

15:35

16:00

PF May 11, '81 King-Courte Regional.

R. O. PENHALL LTD., MADE IN VANCOUVER, CANADA
DUKSBARK WATERPROOF

METRIC
FIELD (S)

D.H.

SOILS

K-C REGONALS

MAY 11-26

1981

KC

DH

May 11 /81

MAY 11/81 KC - D/H 1-11

DEC. NO.	ALT.	DESCRIPTION
32° 1	1800	MED-DARK BR SILT
15° 335(A)/640		LT. BR WITH ORANGE SILT
24° 380(B)/620		BROWN ORANGE SILT
17° 2	1605	MED BROWN SILT
27° 3	1350	MED. BROWN SILT
33° 4	1050	MED-LT. BROWN CLAY
11° 5	800	ORANGE CLAY
7° 1170(K)/630		MED BROWN SILT
18° 6	620	MED BROWN SILT
30° 7	260	ORANGE SILT
9° 1436(O)/210		GREY STREAM SILT
16° 8	140	GREY STREAM SILT
5° 9	80	GREY STREAM SILT
3° 10	60	MED BROWN RUCCA SILT
3° 11	(45)	MED BROWN SILT

↳ ΔK 150'

R. D. PENHALL LTD. MADE IN VANCOUVER, CANADA
DURISAK WATERPROOF

MAY 11/51 KC DN

SADDLE

1

11

SMALL
CREEK

12

GULLY
SMALL CREEK

13

14

303°

15

267°

16

STREAM
(GULLY)

CLIFF 20'
GORGE 100FT WIDE

264°

287°

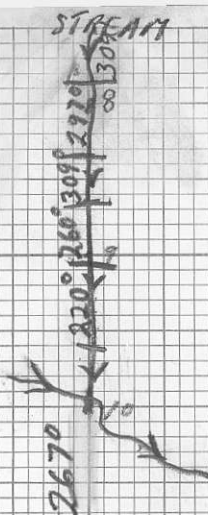
17

FOLLOWED STREAM 309°

KC-DH

STREAM

MAY 11 / 81



• 11
GOSPEL
ROAD
FINIS

• 12

• 13

• 14

• 15

• 16

WSP-0-6692-0-CS ATTITUDES (100/40 N)

SANDSTONE SILTSTONE

CONGLOMERATE

VOLCANIC

CHERT

SHALE

LIMESTONE DOLOMITE

SILT

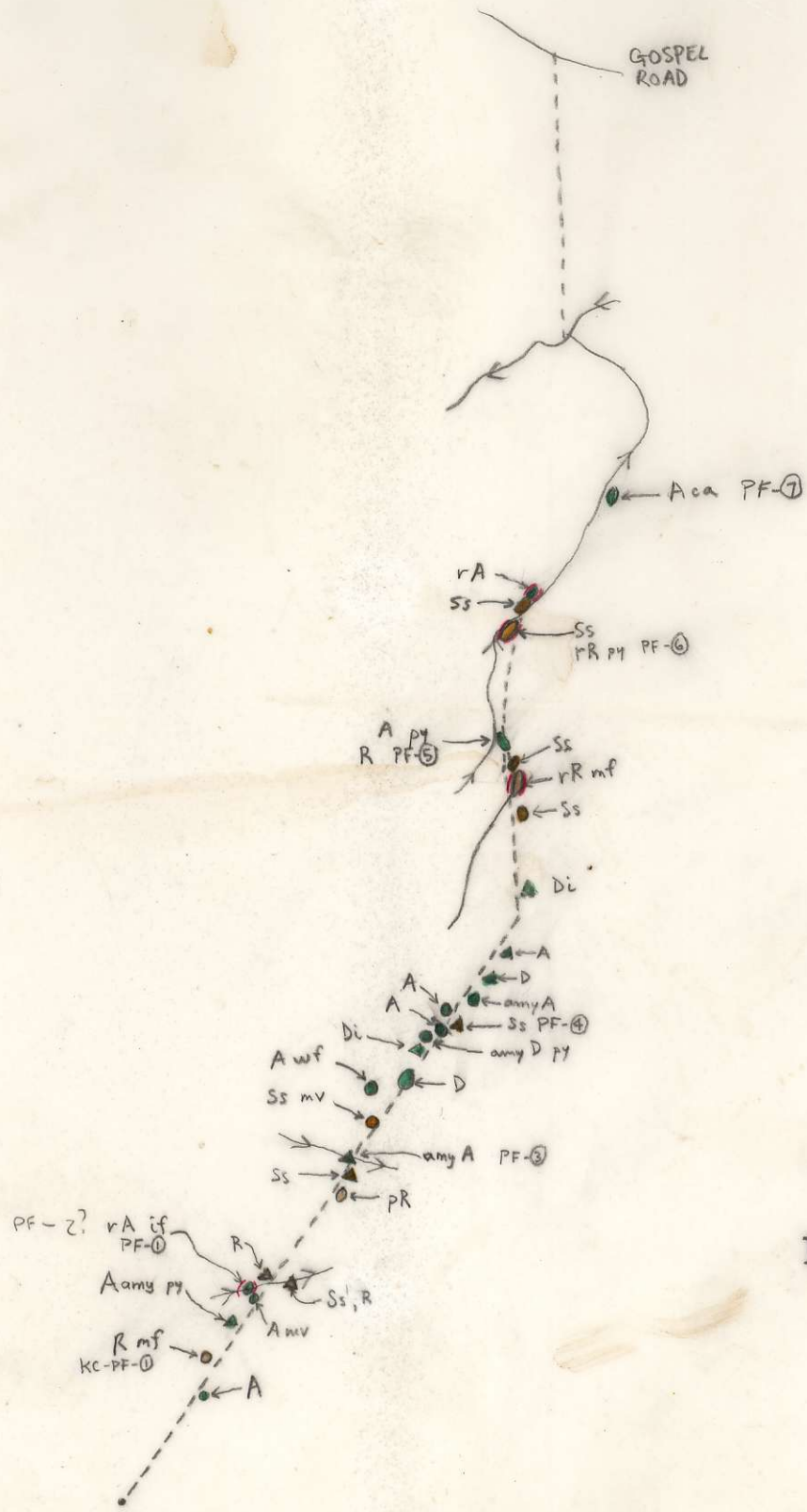
INTRUSIVE

GOSSAN, MINERALS

SPECIMEN SITE A.B...: DO NOT WRITE ON OTHER SIDE OR USE COLOURS

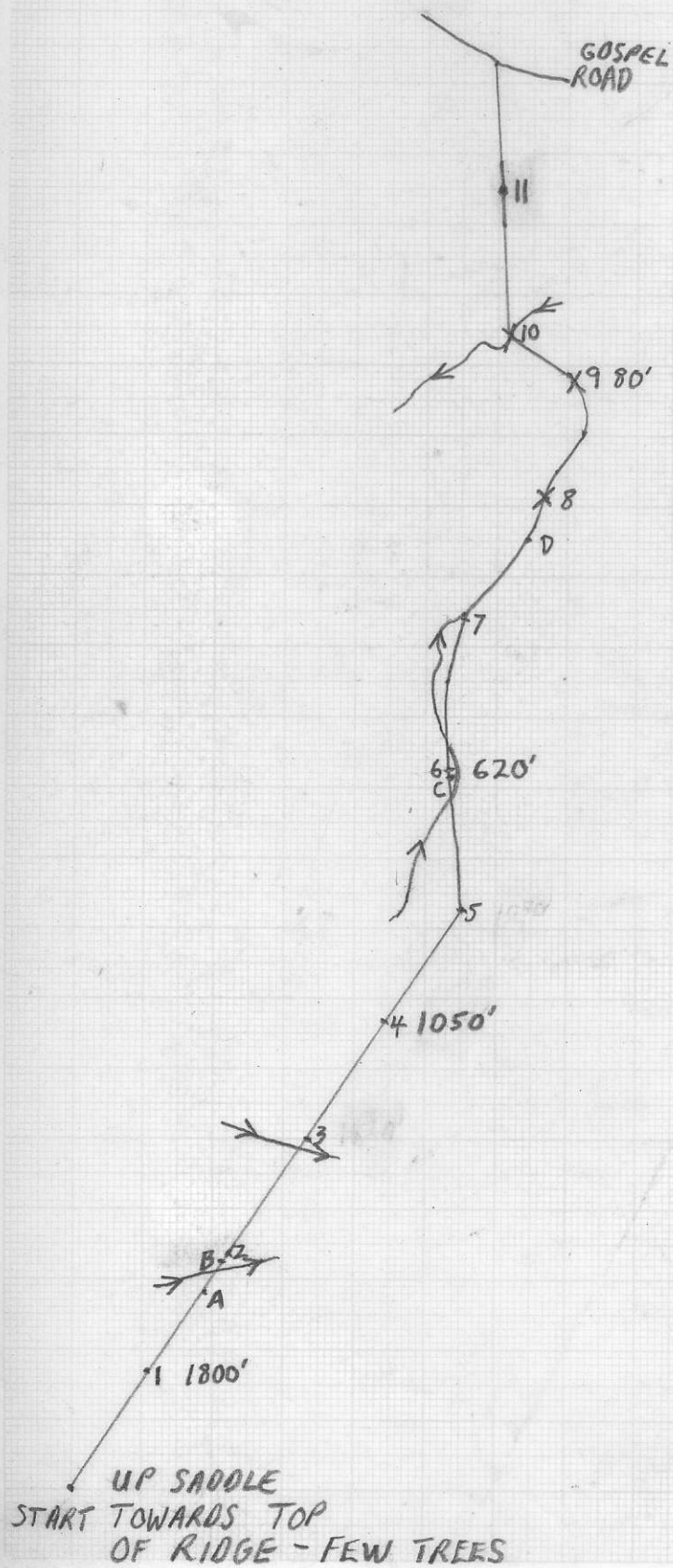
DO NOT FORGET CONTOURS, DRAINAGE, NORTH ARROW, LAT/LONG, SAMPLE SITES, WORKINGS, TRAILS, GOSSANS, OBSERVED GEOLOGY: DEFINED --- INFERRED - - - ASSUMED.....

Project P. Fagerlund	NTS	Scale 1:10,000	Page (of)	Traverse
Sampler D. Hodge	Location, Target (words) Kings-Courte Regional.		Sample Nos	
Date May 11, 1981	photo no.	Cert. Nos		



ASSAY: GEOCHEM: Cu Mo Pb Zn U W

KC AREA - KC-DH 1-II, A-D



→ N
SCALE 1:10,000
DEREK HODGE
MAY 11, 1981