

KC

841018
King-Courte
1981

DH SOILS

21 MAY

MAY 21, 81 KC-DH 85-

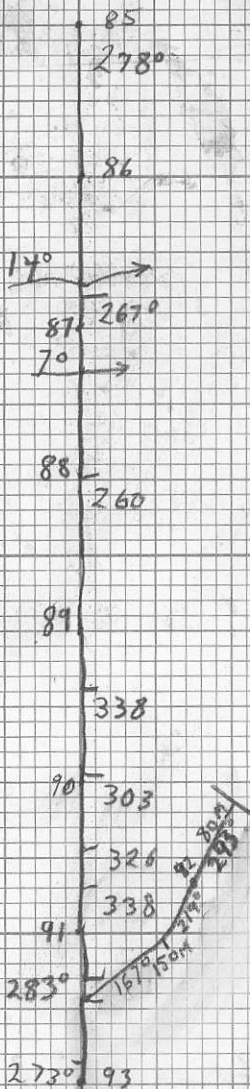
DEC	ALT.	DESCRIPTION
-1°	85 120	GRAY CLAY
+1°	86 100	MED BR CLAY
+2°	87 100	ORANGE ° SILT
+2°	88 120	" " "
+2°	89 140	ORANGE BR CLAY-SILT
+2°	90 180	ORANGE ° SILT
-2°	91 160	ORANGE ° SILT
+10°	92 260	" " "
-9°	93 120	MED BR ° SILT
-8°	94 40	ORANGE CLAY
-2°	95 20	MED BR CLAY

↑

ALL +25FT CORRECTION

MAY 21, 61

KC-DH



KC-DW

2420

MAY 21, 81

1920

94

2540

2950

2120

850

95

765 MAIN ROAD

KC

PF GEOL

21 MAY

PF. King-Courts Regional May 21.

- ① 0460 thin bedded argillite
70°/80N out by very thin
→ dacite dyke (2 inches) 110°/80S
- KC-PF-(44)
- ② 0620 thin bedded argillite
100°/80S - also 100°/45 N
- ③ 1200 Altered andesite, calcite
& hematite in fract. int. fract
PF-(45) → purple & green fault
rock
- ④ Andesite porphyritic with
feldspar crystals, med. fract
- ⑤ Andesite, shiny fracture
surfaces. PF-(46)
- ⑥ Dacite, coarse grained
- ⑦ Dacite coarse grained, porous,
dyke, square fracture. PF-(47)
Changes to andesite at edges,
cuts through porphy. andesite



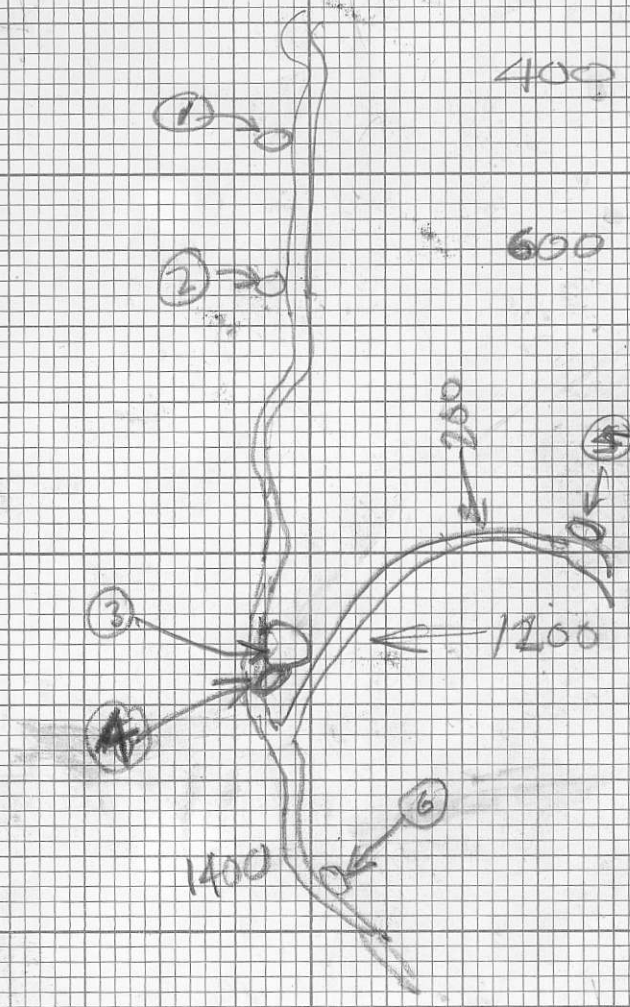
400



600



1400



PF

King-Courte Regional

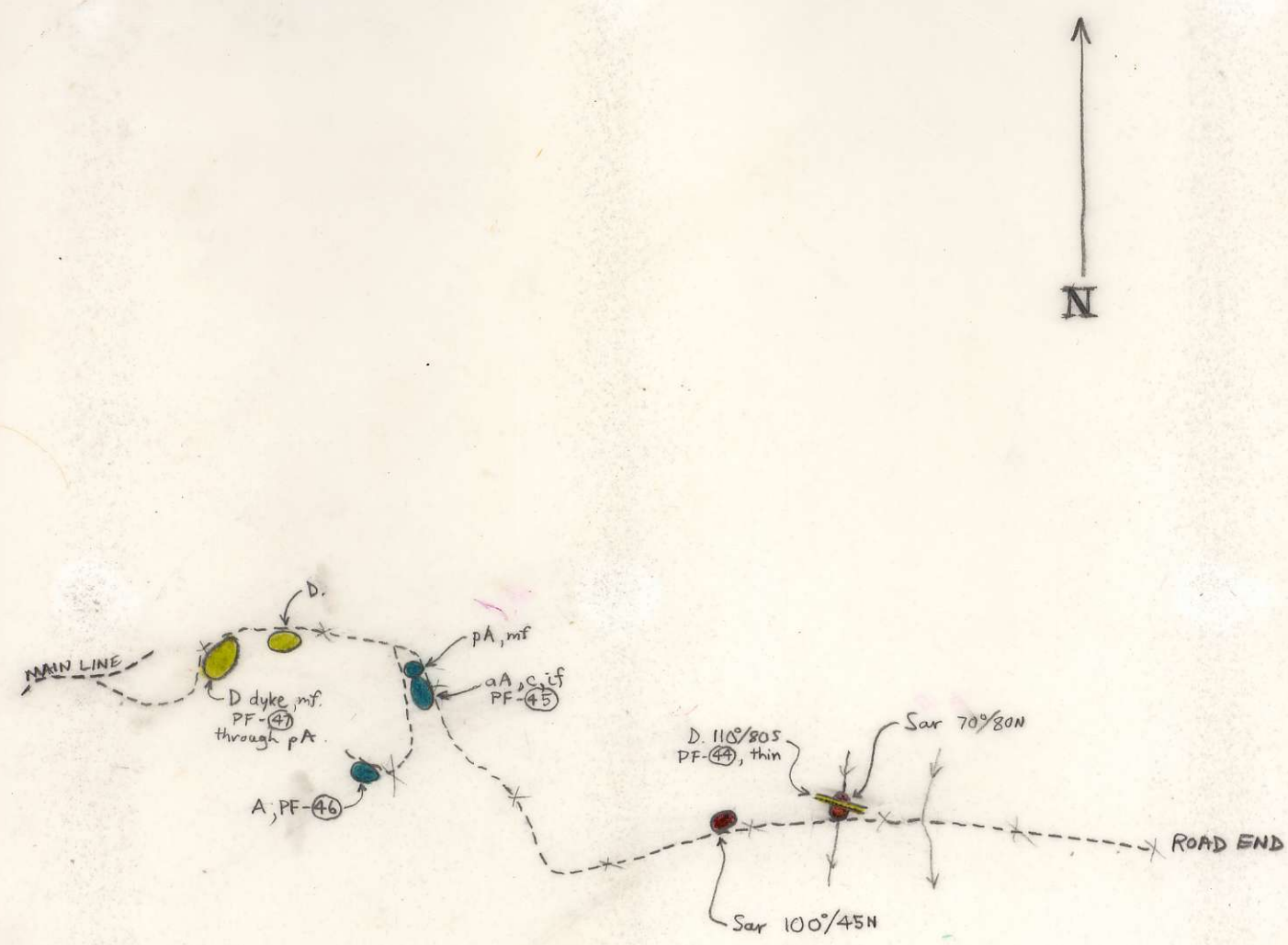
May 21, 1981

R. D. PENHALL LTD. MADE IN VANCOUVER, CANADA
DURABLE WATERPROOF

~~scribble~~
METRIC
FIELD (S)

WCS-29991-0-ATTITUDES (100/40 N)
 SANDSTONE SILTSTONE
 CONGLOMERATE
 VOLCANIC
 SPECIMEN SITE A,B,...; DO NOT WRITE ON OTHER SIDE OR USE COLOURS
 CHERT
 SHALE
 LIMESTONE DOLOMITE
 INTRUSIVE
 GOSSAN, MINERALS
 SILT X SOIL ● ROCK ■ PAN Δ WATER O

Project P. Fagerlund	NTS	Scale 1:10,000	Page 1 of 1	Traverse
Sampler D. Hodge	Location, Target (words) King-Courte Regional		Sample Nos KC-PF-44 to 47	
Date May 21, 1981	photo no.	Cert. Nos		



DON'T FORGET CONTOURS, DRAINAGE, NORTH ARROW, LAT/LONG, SAMPLE SITES, WORKINGS, TRAILS, GOSSANS, OBSERVED GEOLOGY: DEFINED — INFERRED - - - ASSUMED - - - -

ASSAY: U W Zn Pb Cu GEOCHEM:

KC AREA

SCALE 1:10,000

MAY 21, 1981

DEREK HODGE

PAUL FAGERLUND - MAPPER

