

841014
King-Courte
1981

Kc

DH

13 May

MAY 13, 81 KC-DH 28-36

DEC	NO.	ALT	DESCRIPTION
8°	28	1120	MED BROWN X STLT
26°	29	1100	" " X SILT
8°	30	1000	" " X SILT
7°	31	900	DARK BROWN O CLAY
24°	32	890	MED BROWN O CLAY
45°	33	800	MED BROWN O SILT
7°	34	660	MED BR X SILT
15°	35	640	ORANGE O SILT
13°	36	550	MED BR. SILT X

R. D. PENHALL LTD., MADE IN VANCOUVER, CANADA
DURABLE WATERPROOF

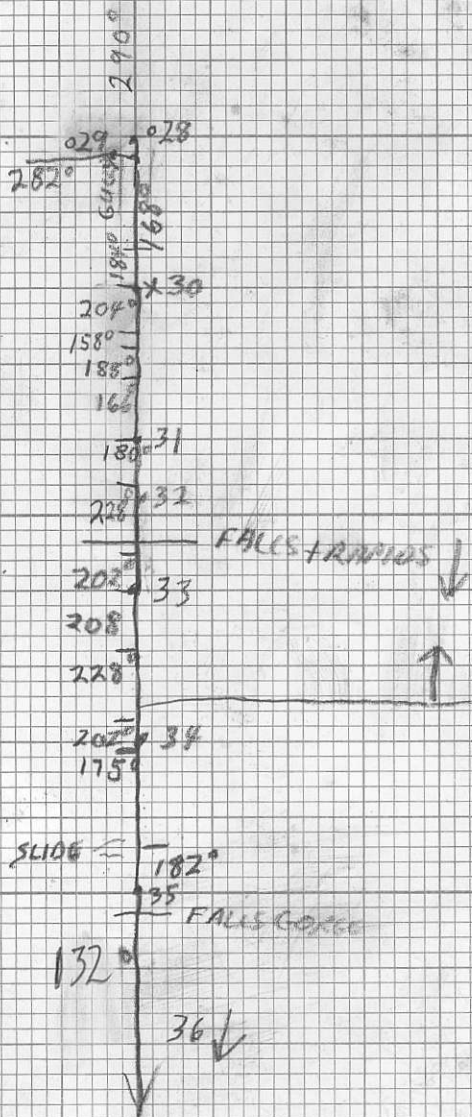
ST - STREAM
X - SILT
/ O - SOIL

METRIC
FIELD (S)

MAY 13, 81

KC ON

DROP OFF



Kc

PF

13 May

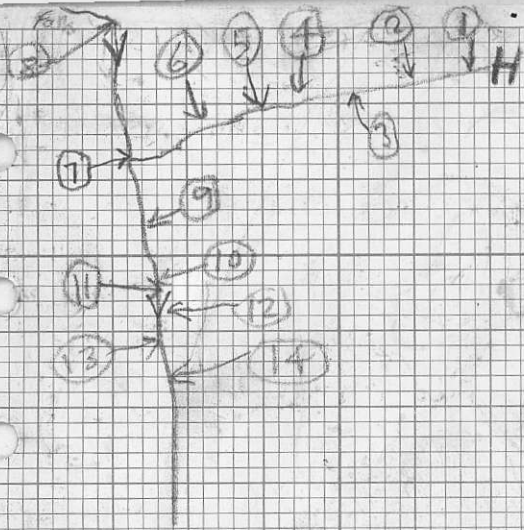
///

King Court PF. May 13, '81

- ① 0007 Andesite rusty fract.
- ② Andesite float white w. silica
- ③ Purple volcanic outcrop
KC-PF-18
- ④ Purple volcanic float larger crystals
- ⑤ As ④
- ⑥ Andesite outcrop
- ⑦ 0200 river! dacite with large inclu.
blue volc. glass float calcite veins
- ⑧ diorite - med. grained and. tuff
calcite rich

Andesite
purple volcanics

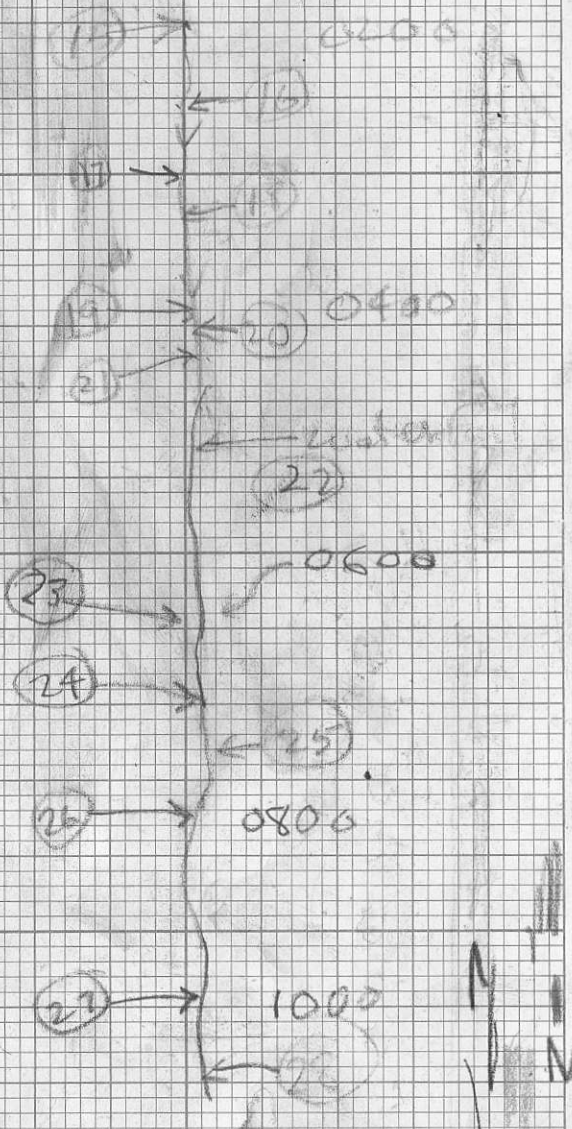
- ⑨ very coarse dacite tuff
- ⑩ banded andesite tuff float
30% chert amygdales or nodules
flow banding 0090
- ⑪ Andesite outcrop black specks
and quartz amygdales
- ⑫ dacite coarse tuff
- ⑬ 0130 andesite - dacite dyke
with calcite amygdales.
through coarse dacite tuff
- ⑭ 0140 weak and dike 45/65 SE
2 m wide



King-Courte PF May 13, '81

- (15) D.C. to dyke? KC-PF (20)
through coarse dacite tuff
- (16) Andesite float with quartz
vein KC-PF (21)
- (17) Blue dacite tuff with
smaller inclusions
- (18) large amount of rhy-dacite
float KC-PF (22)
- (19) Andesite dyke 150/70w
through coarse dacite tuff
- (20) Med. grained and - dacite.
- (21) Blue volc. glass float KC-PF
andesite? diorite? tuff?
KC-PF (24) quite thick
- (22) large amounts of andesite
- (23) Purple andesite on cliff
KC-PF (25) tuff?
0600
- (24) Purple volcanics
- (25) 0120 dacite - andesite
- (26) Back into coarse dacite tuff
- (27) Rhyolite-dacite dyke.
KC-PF (26)
- (28) Rhyolite-dacite
porphyritic
0126

R. B. FERN, LTD. MADE IN CANADA
DUNSMUIR WATERPROOF



King Courte PF May 13, '81

R. D. PENHALL LTD. MADE IN WINNIPEG, CANADA
DURABLE WATERPROOF

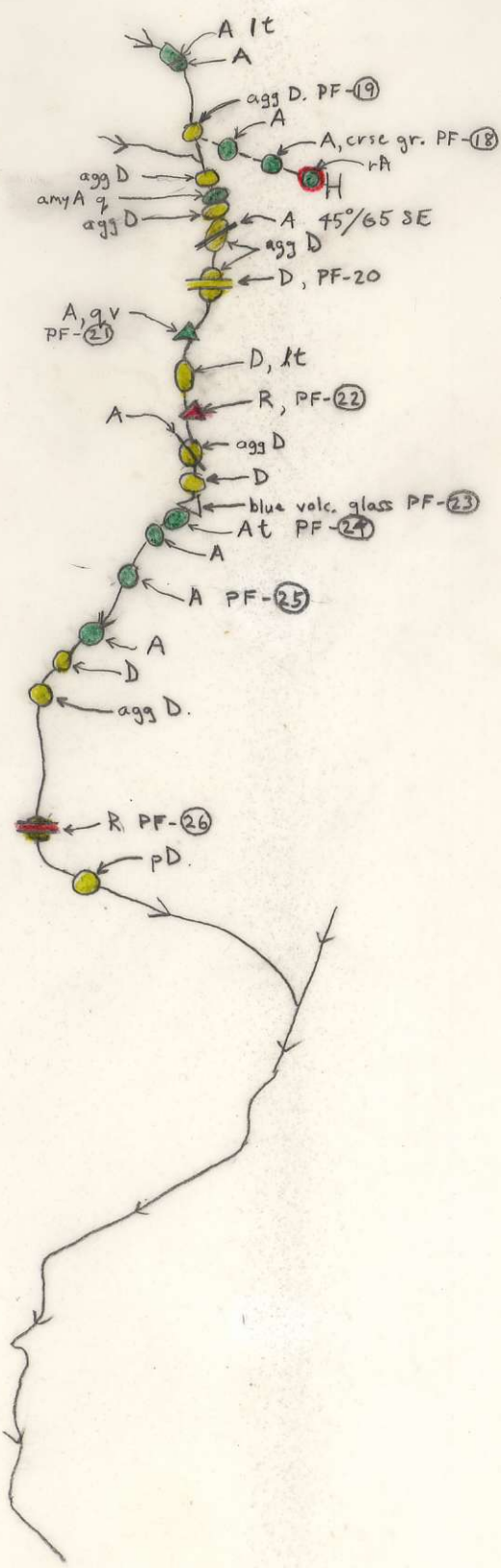
METRIC
FIELD (S)

CIL66620-CSM
 ATTITUDES
 100/40 N

Project P. Fagerlund	NTS	Scale 1:10,000	Page 1 of 1	Traverse
Sampler D. Hodge	Location, Target (words) King-Courte Regional		Sample Nos KC-PF-18 to 26	
Date May 13, 1981	photo no.	Cert. Nos		

- GOSSAN, MINERALS
- INTRUSIVE
- LIMESTONE DOLOMITE
- SILT X SOIL ● ROCK ■
- SHALE
- CHERT
- WATER ○
- VOLCANIC
- CONGLOMERATE
- SANDSTONE SILTSTONE
- Specimen site A.B...: DO NOT WRITE ON OTHER SIDE OR USE COLOURS
- Geology: DEFINED ——— INFERRED - - - - ASSUMED - - - -

DON'T FORGET CONTOURS, DRAINAGE, NORTH ARROW, LAT/LONG, SAMPLE SITES, WORKINGS, TRAILS, GOSSANS, OBSERVED GEOLOGY: DEFINED ——— INFERRED - - - - ASSUMED - - - -



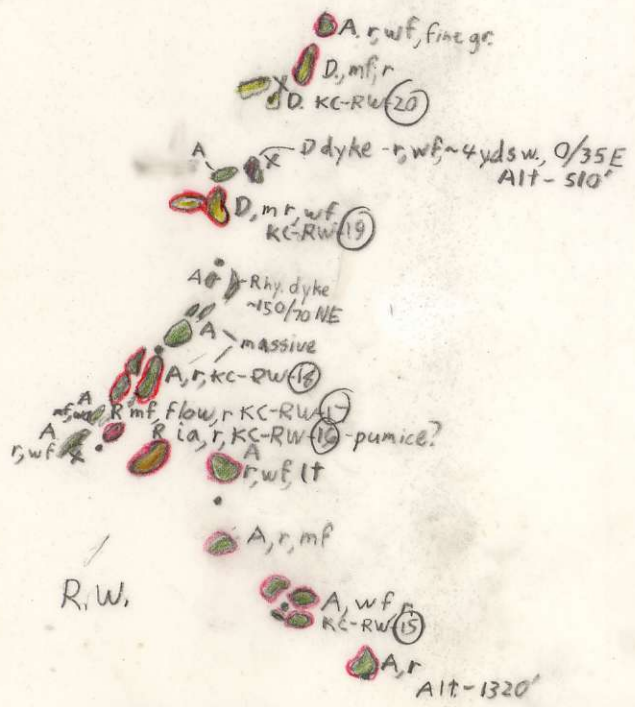
GEOCHEM: Cu Mo Pb Zn U W ASSAY:

W 66920 - CSN
 ATTITUDES
 100/40 N
 SANDSTONE
 SILTSTONE
 CONGLOMERATE
 VOLCANIC
 SPECIMEN SITE A.B.: DO NOT WRITE ON OTHER SIDE OR USE COLOURS
 CHERT
 SHALE
 PAN
 WATER
 LIMESTONE
 DOLOMITE
 SILT
 SOIL
 ROCK
 INTRUSIVE
 GOSSAN,
 MINERALS

Project K-C	NTS	Scale 1:10,000	Page 1 of 1	Traverse
Sampler RW	Location, Target (words)		Sample Nos KC-RW 15 to 20	
Date May 13	photo no. KC Area	Cert. Nos		

Partner-RL

mostly fine-grained, massive
 Porphyritic And. and granodiorite
 near bottom x



DON'T FORGET CONTOURS, DRAINAGE, NORTH ARROW, LAT/LONG, SAMPLE SITES, WORKINGS, TRAILS, GOSSANS, OBSERVED GEOLOGY: DEFINED — INFERRED - - - ASSUMED.....

GEOCHEM: Cu Mo Pb Zn U W ASSAY:

MAY 13

SCALE 1:10,000

ROB LAZENBY (ROSS WATSON - MAPPER)

DEREK HODGE - KC-DH, 28-36 (PAUL FAGERLUND (MAPPER))

Partners?

