

841007
King-Courte

1981

KC

CB

13 May

SOILS

13 MAY CB

~~25~~ Bear 229°

25 - ORGANIC BLACK CLAY

26 - BROWN + BLACK SOIL.

229° for 550m

CHANGE TO ~~229°~~ 190°

27 Black SOIL

Ch. 160° (140m between
bearing changes)

28 - BLACK SOIL

29 BROWN GRIT

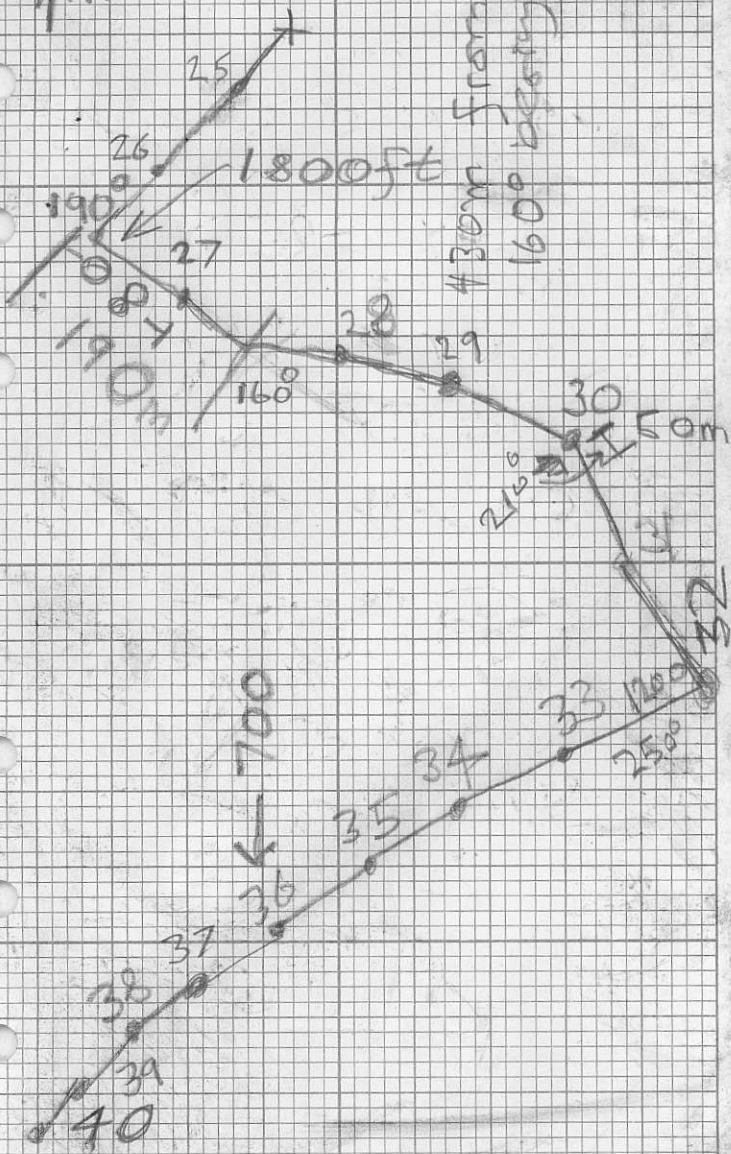
210° 50m →

30 DARK BROWN
CLAY

31 Black grit soil

32 - gray clay

↑ N 13 MAY ↓



13 MAY CB

Bearing 250°

33 ORGANIC BLACK
CLAY

34 CLAY GREY
Some red

35 SILT, Grey - red

36 GREY CLAY

37 Grey - red tuffs

38 organic BROWN
SANDY

39 SANDY BROWN
ORGANIC

40 DARK
CLAY

~~1550 250~~

~~750 210~~

~~45 246~~

~~507 290~~

~~190 m 140~~

R. D. PENHALL LTD. MADE IN VANCOUVER, CANADA
DUNSBANK WATERPROOF

METRIC
FIELD (S)