

Aug 20/82

SM

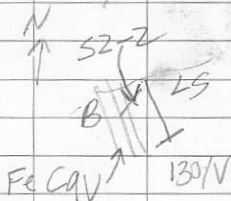
(5)
SM

L-52-1 to 4
Hot Sunny Day
Louis Island regional
boat trav w/ S.G.
W of Beebe anchorage

L-52-1 B, amy, cl+ca w/ vesicles
m-ica, wf,

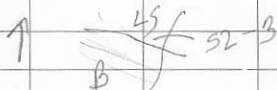
a B, m-icl, massive, wf,

52-2 130°V contact between B, ica,
mt, i Fe carb V // contact to W
+ massive grey limestone
mt, m cavlt to E, m r assoc.
with carb. in
B.



sample of B.

52-3 110°V contact between massive grey
limestone, ica/vlt mshid on NE
+ B, mca, m cavlt (Fe carb)
m r on SW



sample LS

840999
Louise Island
1982

b

Aug 2^o / 82 SM ○
 078^o / 38^o NW. Dark bedded (1mm -
 1cm) limestone, mt, weav.

52-4

black bedded limestone, med,
 150^o / 40^o SW.

Aug 21/82 SM

①

L-52-5 to 8

trav. along Louis main line
starting just east of Beattie
anchorage heading east, with
Irahan Thompson

m

450-580 a) Sar $110^{\circ}57'S$ W well bedded
wca, a few sandy interbeds
quartz
62-36 in middle of quarry

620-745 b) Sar. well bedded $109^{\circ}48'S$ W
black-light coloured wca
huge cliff exposure along road

(52-5)

1080 m c) ^{concentric} Siltstone ^{concentric} weathering
1120 m r' on weathered surface
 $096^{\circ}40'S$ W

1300 m (52-6) siltstone m-ish'd
1360 concentric weathering

1400 m d siltstone, etc

1500 e siltstone ¹⁵⁵ massive ^{quartz} feg, wca
-1600 w fossils - bi-valves

Aug 21/82

SM

②

e) pebbly interbeds, $130^{\circ}/95^{\circ}\text{SW}$
carbonaceous ss

f) 1780 m ss/arkosid ss, wca, pale grey/green

1900 m g) $140^{\circ}/35^{\circ}\text{SW}$ thinly bedded,
shale2000 m h) concentrically weathered
+ 2/000 m grey green siltstone w. fossiliferous
and 2 small qtz

2240 m - just past GZ-47 - stream

2285 i) (GZ-48) dark grey siltstone

2500 m - stream - road close to
water now + down small
hill ~2500 -
2600 j) pebbly ^{ss}/conglomerate
mca, mpy (52-7) dark
grey/green rounded chert
underlies siltstone - can
get bedding - mpy vertical
road cut $\sim 100^{\circ}/\text{SW}$
shallowly $\sim 30^{\circ}$ 2700 m k) pebbly ss as j, w carb
2850 ↓

Aug 2/82

SM

(3)

L 2870- SS Wea. V. C
2940 quarry just before
road junction L-10
(GZ-54)

M 3025-3064 concentrically
weathered siltstone, nr →
massive green ss.

N 3100-3257 green siltstone
concentric weathering

L
0.3375 m green siltstone massive
(3600??)

P 3400-3500 concentrically
weathered green siltstone +
massive + 3600-4175

(52-8) 3660m - nr concentrically
weathered siltstone 160°/22°SW
4090 - coal frag w/ siltstone

Q 4484-4560 dark grey siltstone, nr
166°/54°SW

R 4600-4770 m dark grey - olive green
siltstone blocky fracture
4800-4875, 4920-5000

S 5064 100°/72° NE grey siltstone
shiny bedded - 3mm m f.

METRIC
FIELD (S)

Aug 21/82

SM

(4)

S

also

- 5210 m

, 5300 m,

Aug 22 / 82

SM

①

L-SZ-9 to 11

with GT starting where we
left off yesterday on
Joussé main line
working east.

93-360 a) SCo - rounded spherical
pebbles - cobbles. 1cm - 10
cm, granite, volcanic
sed. fragments, sandy
→ greywacke matrix, massive
cliff forming outcrop $102^{\circ}/62^{\circ}SW$
sp. sandy interbeds WR on
220 m (S2-9) Fractures.

500-580 b) SCo, do (C)

582-650 c) S. H. uniform mt gr. greenish
colour, massive, f. - blocky.
 $164^{\circ}/60^{\circ}SW$

720m d) olive green greywacke mg. w.f.

1650m e) olive green greywacke

2150m f) green ss. w.f.

Aug 22/82 SM

(2)

2400 - g) SS/greywacke o/c above
2730 road on hillside

2730 - h) o/c on road

2900 (S2-10) 2780m - green SS,
m-c gr, uniform oval
concretions, mt

2860 - 1 pbbly SS area →
Sco. 100°/76°SW

2900-3/00 i) o/c. Sco? up on cliff

3/50 j) SS m-i hem mt, massive
(S2-11) m-i slicks

Aug 23/82

SM

①

down Malheur Creek logging
trail - abandoned

1400m - cache of stumping powder
- still in wooden cases
13 cases 20%

trail ends at 1832m, no
sign of it - trail ends
here. Without having
reached destination - Malheur
Lake. Tim with Steve
Boertz.

Aug 24/82

SM

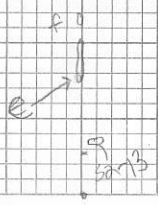
①

L-52-12 to 14

follow L-610 + other road
near Seiad Pt, with SB.730 m to junction, new road
heading SW, not on maps (HS)900-921 m g) 180°/60°E?? green, gritty siltstone
995 m (greywacke) mt. wr.1100 m b) gv 06°/V (S2-12) w/lt
green greywacke, mt.
wr. gv. f. - 1 cm over 1
m width.1175-
1264
1290-
e) siltstone / green greywacke 170°/26°SW
well defined bedding w.f. mt.
massive bed. 1-2 m thick a few
thick bedded layers 1-10
cm for 1 m1450 d) 152°/34°SW green siltstone
mt. wr.— or western fork —
130 m (S2-13) g-siltstone 040°/4° gv
1 cm - 2 cm 1 m - 1.5 m
+ 30 m in quarry on W side of
road

1:20,000

800
600
400
200
0



Aug 24/82 SM

(2)

304-m

e) 085°/10° SW concretionary
weathered shale black mt,
and greenish siltstone

420 m

- along road becomes predominantly
green siltstone, greywacke

475 m

f) grey siltstone & oolitic
concretions, spherical
weathering, mt, wr,

526 m

g) at bend to East L-620
green siltstone, mt

600

h) green siltstone mt

670

670 m

i) black shale mt, concentric
weathering, wr, 134°/30° NE

760 m

j) green siltstone black
-800 shale interbeds (52-14)

860 m

k) green siltstone

1030

Aug 25/82 57

①

L-52-15 ~~Aug~~

Trav with S.6. by L-3102
L-500 just west of Grand
Pt.

675m (S2-15) green greywacke
& shaly bed well defined
bedding $110^{\circ}/54^{\circ}$ NE mt. W-m
cutt.

380m on a) L-500 $110^{\circ}/30^{\circ}$ NE interbedded
black shales & grey/green
siltstone, mt.

360m b) valley LMC from junction of
L-310/500 green siltstone at
base of small waterfall

Aug 26/82 SM

①

Trav on LML W from
Givaud Pt. with GT heading
Westward.

L-52-16 to 18

hot sunny day light breeze
V calm water in ch - lots of trucks
on the road -

1800 m

(52-16) m-r' cav, m-ishr'd,
if, Diorite.

1870

2680 -

(5-17) green/grey siltstone - pebbly
ss / conglomerate
pebbles rounded → polished
sh shell fragments w/
pebbly ss, w/sil of matrix.

2790 m

3000 m

(52-18) sco, ir, mt, / yellow
staining (Fe?) m-ipy w/sil
of matrix. small hole cut
away in wall of 1/2 - .5m
deep.

Aug 27/82 SM

①

L-52-19 to 21

Hot sunny day on L-400
 starting at junction with
 L-490 Trail w/ G.T.

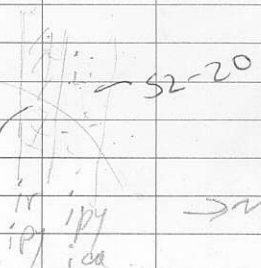
1570m → 1600m quarry
 at S end of quarry B, m.f, coult,
 incl,

(S2-19) ~1600 - D, ir, m-if, ipy, grade
 sharply taken N into Dacite,

(S2-20) if, ipy, ica + coult, white
 strain on op
 zone 4m wide total.
 dy? 680°/V??

Basalt

S2-19



1940m (S2-21) grey fine allstone if
 no visible bedding.

BC116662-0-5M
ATTITUDES
(100/40 N)

Project M512	NTS 103B12	Scale 1:20,000	Page 1 of 1	Traverse
Sampler SM(GT)	Location, Target (words) Beattie Anchorage → East on Louise Main Line.		Sample Nos 2-52-5 to 8	
Date Aug 21/82	photo no. BC-5092-206		Cert. Nos 2-62-26 to 81	

GLOSSAN, MINERALS
 INTRUSIVE
 LIMESTONE DOLOMITE
 SILT X SOIL ● ROCK ■
 SHALE
 CHERT
 VOLCANIC
 SPECIMEN SITE A, B, ...; DO NOT WRITE ON OTHER SIDE OR USE COLOURS
 CONGLOMERATE
 SANDSTONE SILTSTONE
 DON'T FORGET CONTOURS, DRAINAGE, NORTH ARROW, LAT/LONG, SAMPLE SITES, WORKINGS, TRAILS, GOSSANS, OBSERVED GEOLOGY: DEFINED — INFERRED - - - ASSUMED.....

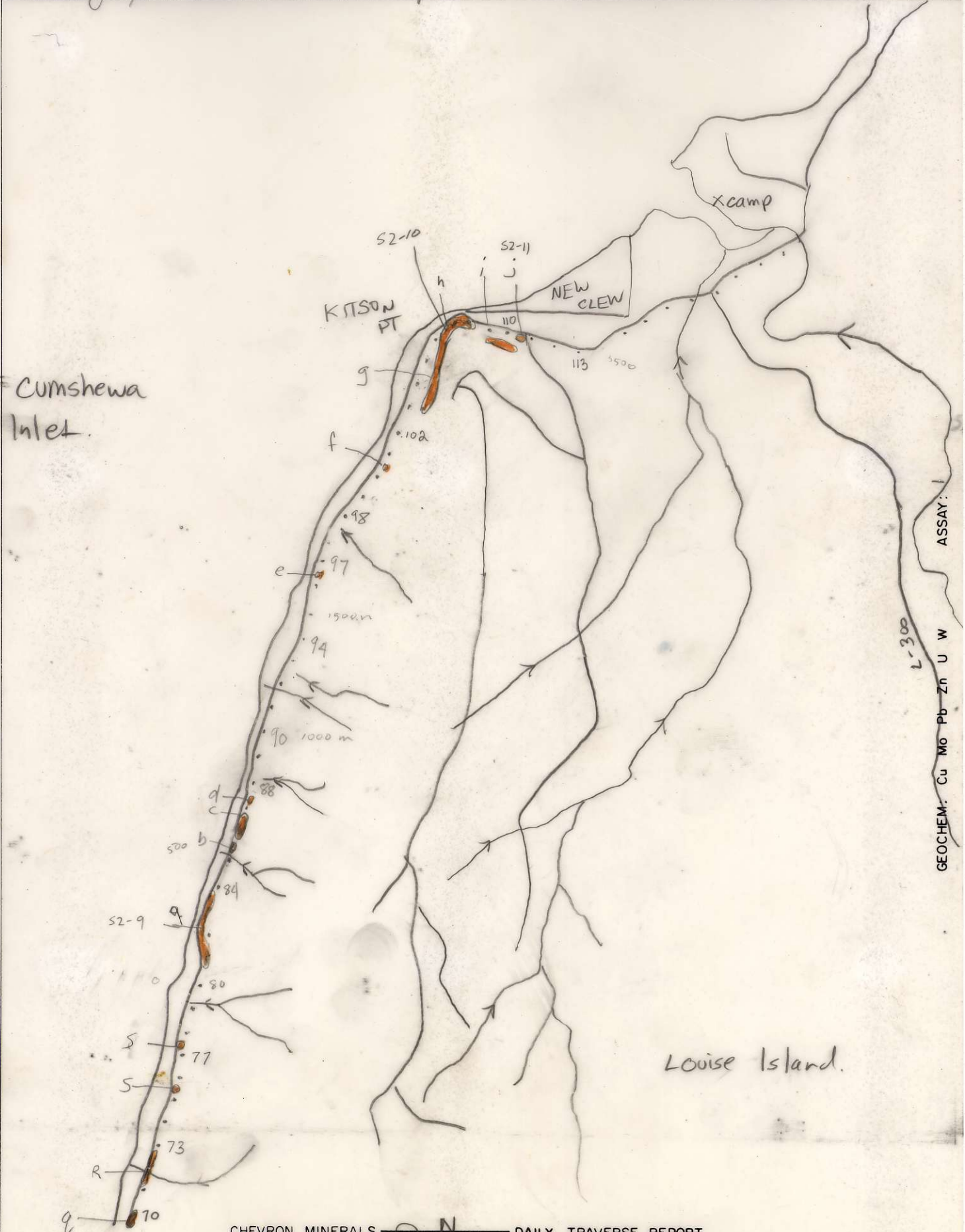


ASSAY: GEOCHEM: Cu Mo Pb Zn U W

WCS 079922
ATTITUDES
L-600/40 N)

Project M512	NTS 103B12	Scale	Page of	Traverse
Sampler SM (GT)	Location, Target (words) Louise rainlike East towards Kitson Pt.		Sample Nos 2-52-910 11	
Date Aug 22/82	photo no. BC-5092-246		Cert. Nos 2-62-8170 113	

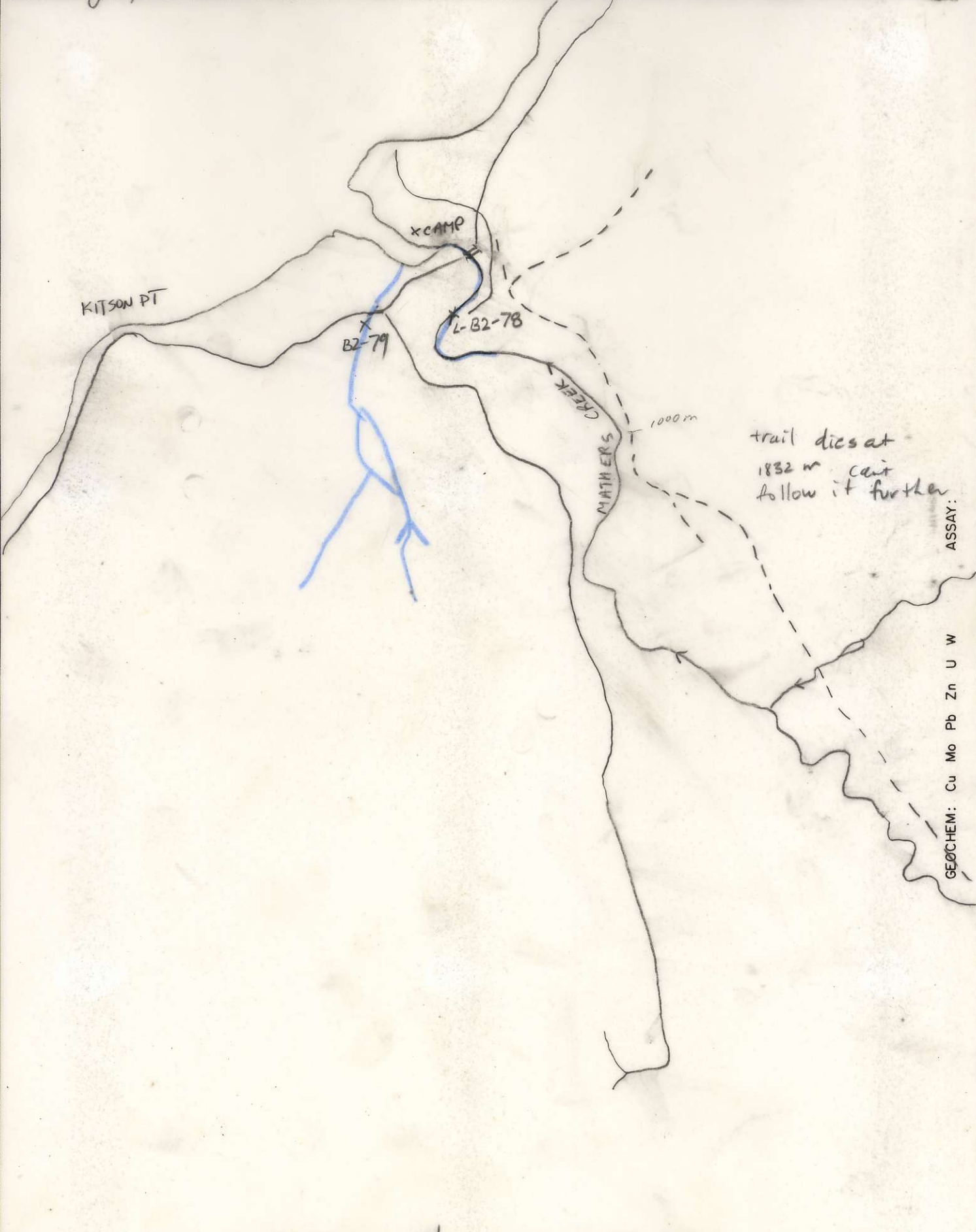
- GOSAN, MINERALS
 - INTRUSIVE
 - LIMESTONE DOLOMITE
 - SHALE
 - CHERT
 - WATER
 - ROCK
 - SOIL
 - SILT
 - CONGLOMERATE
 - VOLCANIC
 - SANDSTONE SILTSTONE
- DO NOT FORGET CONTOURS, DRAINAGE, NORTH ARROW, LAT/LONG, SAMPLE SITES, WORKINGS, TRAILS, GOSSANS, OBSERVED GEOLOGY: DEFINED — INFERRED - - - ASSUMED.....
- SPECIMEN SITE A,B,...; DO NOT WRITE ON OTHER SIDE OR USE COLOURS



CIL 66620 - CS
ATTITUDES
(100/40 N)

Project M512	NTS 103B12	Scale 1:20,000	Page 1 of 	Traverse
Sampler SM(56)	Location, Target (words)		Sample Nos L-52-78 to	
Date Aug 23/82	photo no.		Cert. Nos L-82-78 to 79	

- CONGLOMERATE
 - VOLCANIC
 - SANDSTONE
 - SILTSTONE
 - SILT
 - SOIL
 - ROCK
 - SHALE
 - CHERT
 - WATER
 - INTRUSIVE
 - LIMESTONE
 - DOLOMITE
 - PAN
 - △
 -
- DO NOT WRITE ON OTHER SIDE OR USE COLOURS
- SPECIMEN SITE A.B...; DO NOT WRITE ON OTHER SIDE OR USE COLOURS
- DON'T FORGET CONTOURS, DRAINAGE, NORTH ARROW, LAT/LONG, SAMPLE SITES, WORKINGS, TRAILS, GOSSANS, OBSERVED GEOLOGY: DEFINED — INFERRED - - - - ASSUMED.....



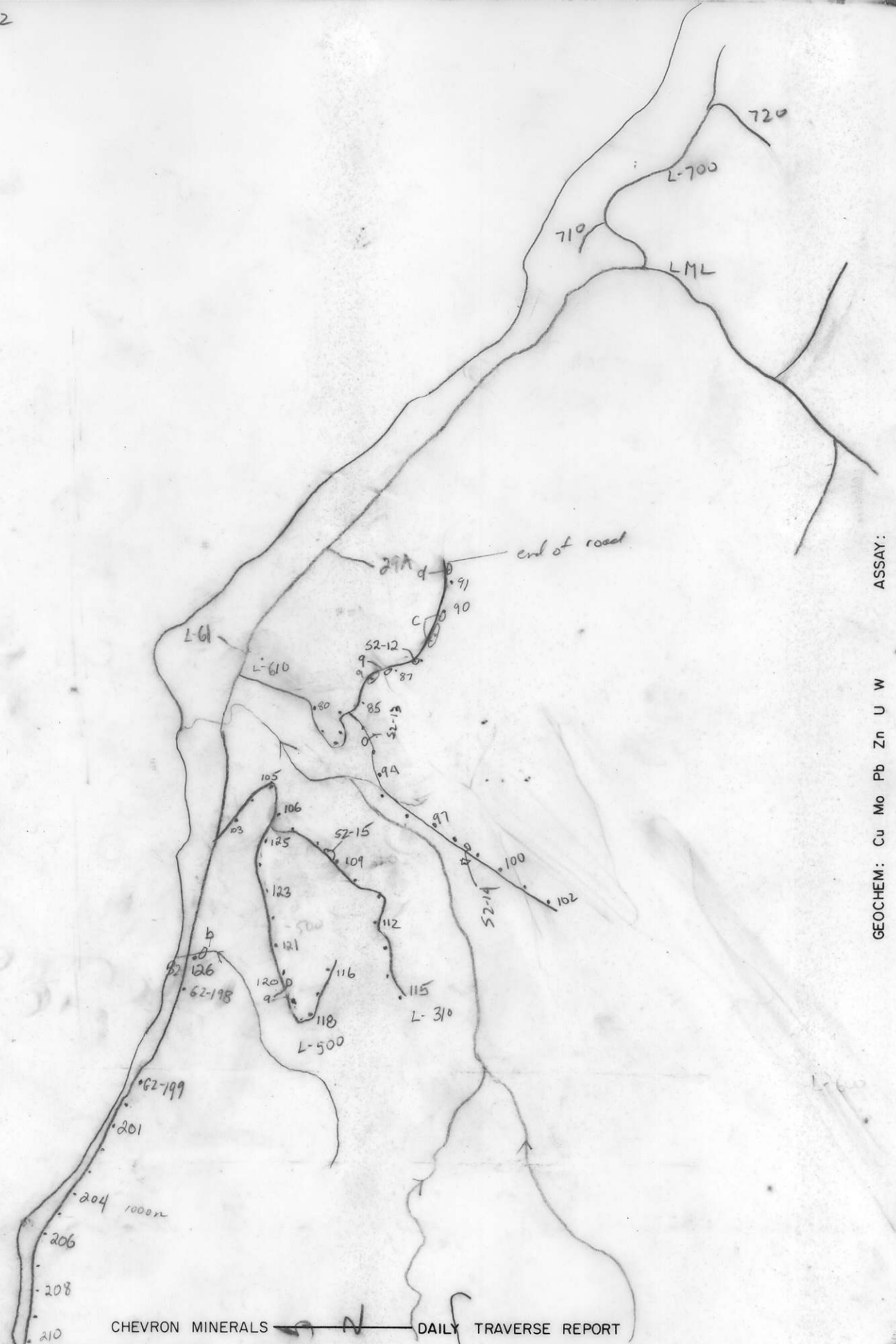
ASSAY:
GEOCHEM: Cu Mo Pb Zn U W

Project 17512	NTS 103B12	Scale 1:20,000	Page 1 of	Traverse
Sampler SM (SB)	Location, Target (words) LML East of camp.		Sample Nos L-52-12 to 14	
Date Aug 24/82	photo no BC-5093-030		Cert. Nos L-B2-80 to 126 L-G2-198 to	

25/82

- INTRUSIVE
- GOSAN MINERALS
- SILT X SOIL
- LIMESTONE DOLOMITE
- ROCK
- SHALE
- CHERT
- WATER
- CONGLOMERATE
- VOLCANIC
- SANDSTONE SILTSTONE
- ATTITUDES (100/40 N)

DON'T FORGET CONTOURS, DRAINAGE, NORTH ARROW, LAT/LONG, SAMPLE SITES, WORKINGS, TRAILS, GOSSANS, OBSERVED GEOLOGY: DEFINED --- INFERRED --- ASSUMED.....



GEOCHEM: Cu Mo Pb Zn U W ASSAY:

CIL 6662-0-55 (100/40 N)

SANDSTONE
SILTSTONE

CONGLOMERATE

VOLCANIC

CHERT

SHALE

LIMESTONE
DOLOMITE

INTRUSIVE

GOSSAN,
MINERALS

SANDSTONE
SILTSTONE

CONGLOMERATE

VOLCANIC

CHERT

SHALE

LIMESTONE
DOLOMITE

INTRUSIVE

GOSSAN,
MINERALS

Project	NTS 103B12	Scale 1:20,000	Page 1 of	Traverse
Sampler SM (GT)	Location, Target (words) LMC West from Girard Pt		Sample Nos	L-52-16 to 18
Date Aug 26/82	photo no.	62-210	Cert. Nos	L-62-198 to 246



DON'T FORGET CONTOURS, DRAINAGE, NORTH ARROW, LAT/LONG, SAMPLE SITES, WORKINGS, TRAILS, GOSSANS, OBSERVED GEOLOGY: DEFINED --- INFERRED --- ASSUMED.....

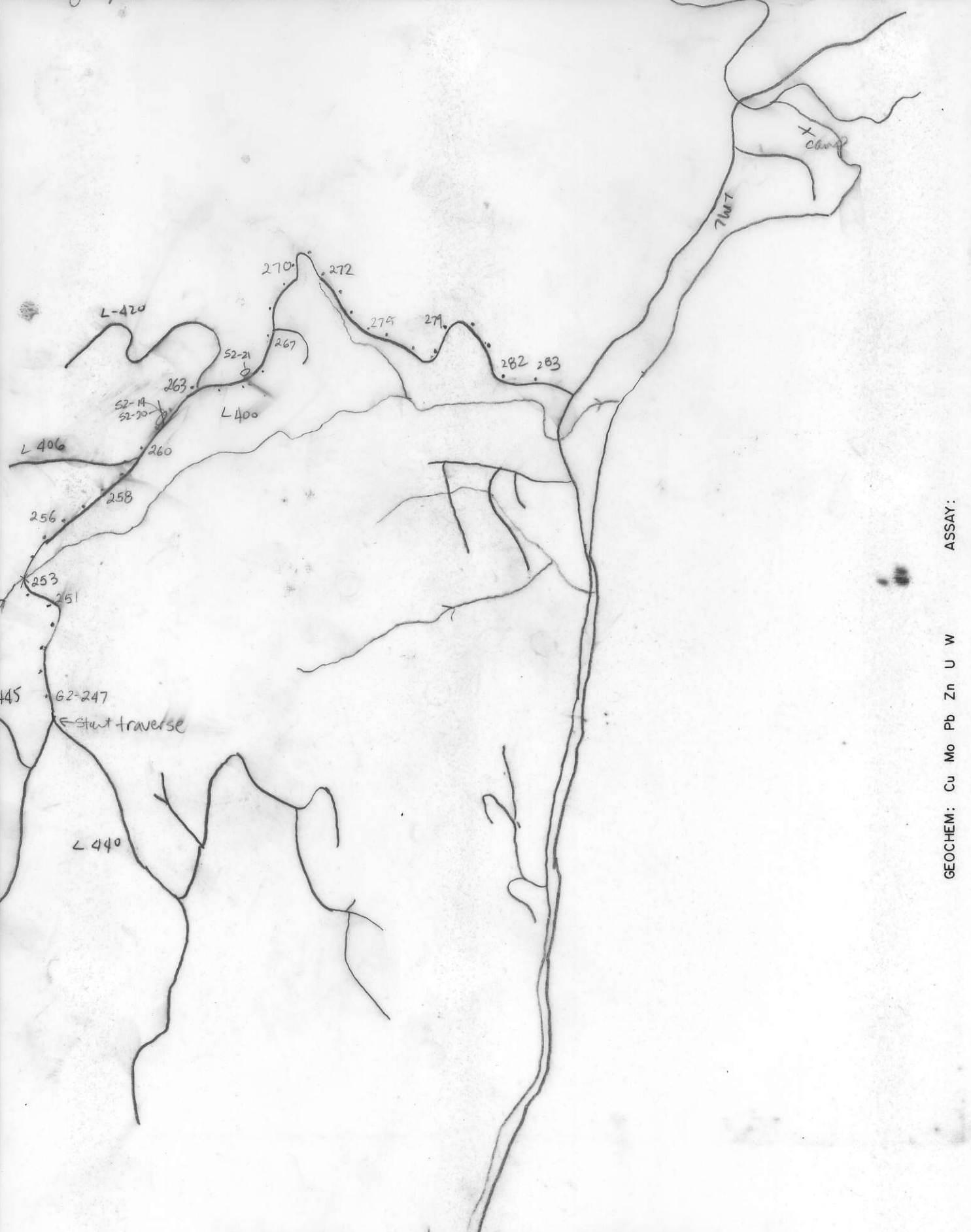
SPECIMEN SITE A.B.: DO NOT WRITE ON OTHER SIDE OR USE COLOURS

CIL 66620 - CSM
ATTITUDES
(100/40 N)

Project M512	NTS 103B12	Scale 1:20,000	Page 1 of 1	Traverse
Sampler SM (GT)	Location, Target (words) L-400 from L-440 junction towards		Sample Nos L-52-19 to 21	
Date Aug 27/82	photo no. Louise ME		Cert. Nos L-62-247 to 283	

- GOSSAN, MINERALS
- INTRUSIVE
- LIMESTONE DOLOMITE
- SILT X SOIL
- SHALE
- WATER
- CHERT
- CONGLOMERATE
- VOLCANIC
- SANDSTONE SILTSTONE

DON'T FORGET CONTOURS, DRAINAGE, NORTH ARROW, LAT/LONG, SAMPLE SITES, WORKINGS, TRAILS, GOSSANS, OBSERVED GEOLOGY: DEFINED --- INFERRED --- ASSUMED.....
 SPECIMEN SITE A.B...; DO NOT WRITE ON OTHER SIDE OR USE COLOURS



GEOCHEM: Cu Mo Pb Zn U W
 ASSAY: