

Ep<sub>1</sub> pyrite in more porous fragment  
rock (breccias) than in flow?

.95 = 1.52 m

70.65 - N 150 m to bridge  
crossing Gregory Creek

— road traverse with DA  
in truck

THURS, May 14/81

KC

840987  
King-Courte

DA, SM

May 14, 1981

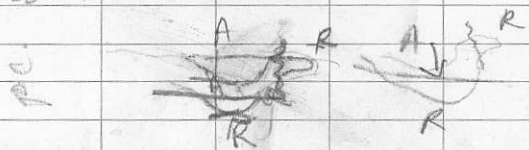
METRIC  
FIELD (S)

96m → 70.4<sup>0</sup> DR SM Reg 14 (2)

670.35 - Orange - i. sheet, fault  
r. h. - E. h. - S. h. - Sticher's moss  
hyphic flow & conformable  
w/ andesite flow. i. p. r.

(SM-26) - heavily pyritized

084/505 horizontal movement.  
A. ~~flow~~ Basalt) i. p. r. py.  
flow.



massive rhyolite flow overlying  
(0180) 40E. r. i. t. andesite.  
contact follows cuts across  
con. up to ridge (N ward)

137m  
70.55 → 70.65

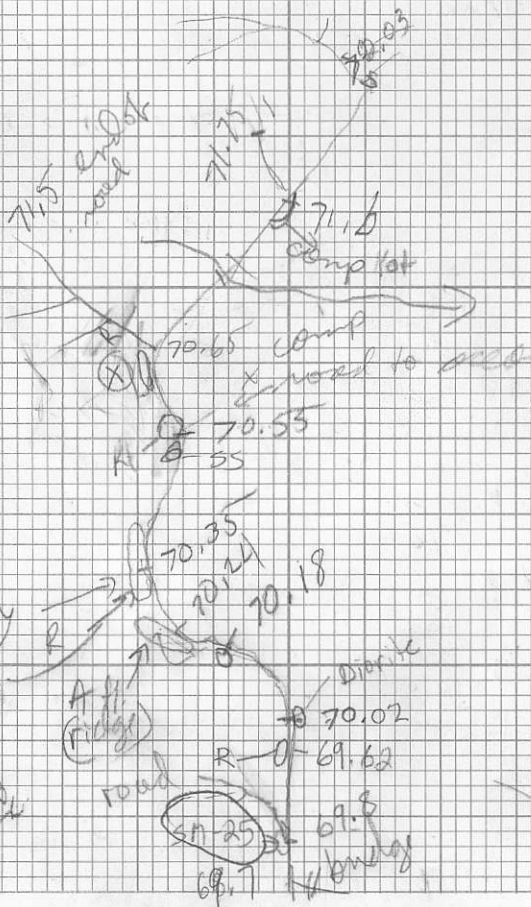
ss - pebbly & block & grey vol. →  
(cherty frags) → conglomerate.  
r. many slender sides (must be  
close to unconformity) small  
block faulted up?

↳ Rhyolite flow, massive  
m.p.

Rhyolite flow - gr

⊗ Rhyolite flow breccia? (blocks frag-  
mented w. mafic composition of  
clasts & matrix → flow top down)

R. D. FENHALL LTD., MADE IN CANADA  
DUCKBACK WATERPROOF



57.25

cut by  
D. [unclear]



Regional

May 14

DA- SM

(1)

0 rd bridge base of actively logged hill  
69.7 mi

16m

0.169.8 - o/c sq road

(pyroclastic) K+bc.  
m s i f, r, m i a l t, p y

ST-25

51m

3 70.02 - knot on N side of road, r mt  
massive intrusive <sup>dyke</sup> quartz diorite →  
granodiorite, i o q. h

qb. slickensides (~ horizontal)

08 12m

69.62 - blocky (flow) interbedded  
flow of pyroclastic rhyolite, i r, p y.  
v. blocky i o.

43 77m

70.18 dyke? 065° trending - small angle  
of andesite (p.) mt. H weathering  
→ steep 050° (2 benches)

Vertical dip,

1.54 87m

70.24 andesite flow - stretched  
fragments, boulders in places

ε diorite, rounded cobbles  
C 25/cr dip 168°/45°W

blocky 120°/45°SW 185°/25°NW

5 80m

70.20 - andesite flow cut by  
0.8 m wide dyke - hornblende diorite.

170°/18°NW