

**KC RW 14 May 1981**

King-Courte  
840983

May 14

① 49 - thin layers, bedded  
phy outcrop, Rhy of  
KC-RW-21 dyr. plas.  $\frac{1}{2}$  m.a.  
At 1640

② And Int. m.f.  
At 1580  $\frac{1}{2}$  m.a.

③ - bet 49+100 and 50 - dssant  
And Int. m.f. Above rt wf

④ Stn 50 - dacite - And contact  
KC-RW-22 wf  $0^\circ = 40W$   
~~Stn - ?~~ m.f. in Dac. At 1340

KW-RW-22 260/90  
Dac from along contact - If  
Stn - 51 to 52  
Stn +20 to +100 - And  
At 1250  $\frac{1}{2}$  m.a.

⑤ I.a. ~~And~~ m.f. rt. At 1230  
KC-RW-23  
= also ③ to ⑥

⑥ And - Stn - 52 + 300  
" " + 100 - rt wd  
massive " + 150 m (rt.  $\frac{1}{2}$  m.a.)

⑦ 53 + 10 - steep - falls, And  
Rhy pattern flow  
strail to right mass.

⑧ ~~the~~ dyke ~ 3 yds W 1040  
KC-RW-24 At wf.  $16^\circ/90$

53 + 50  
105 + 108  
DLC (12)

(11)  
1  
(12)

MAY 14

(9) - same mat. as (8) ~~flow~~

(10) Dalit, mf, At 900

5th, 5<sup>th</sup> - hit stream

5<sup>th</sup> 460 - And - 520.

5<sup>th</sup> + 100 - And with

5<sup>th</sup> + 100 to 56 - no discernable outcrop.

(11) 59 + 100 - mf, nt. - rd.  
Rhy - KC - RW - 23

(12) 60 + 80 - And - Dyke - in Rhy  
night, mf.

60 + 150 - 600 - Dal. - And  
230 / 900

And - all ~ fine grained  
Rhy - varying degrees alt.  
for day

57 + 100 to

KE

RL

14 May

KC-RL

MAY 14

- 47 drk brown organic  
AH - 1780  
Bearing 100°

+80 small creek @ 40°  
↓ elevation 1750

- X48 browns sand & silt from pool  
2 inches below surface

+110 90°

+130 N creek @ 40°

- 49 orange brown silt & sand  
N @ 50°

+140 @ 16°

+180 remort creek @ 340°  
↓ elevation 1300°

- X50 reddish-brown silt & sand  
from creek edge

+110 @ 30°

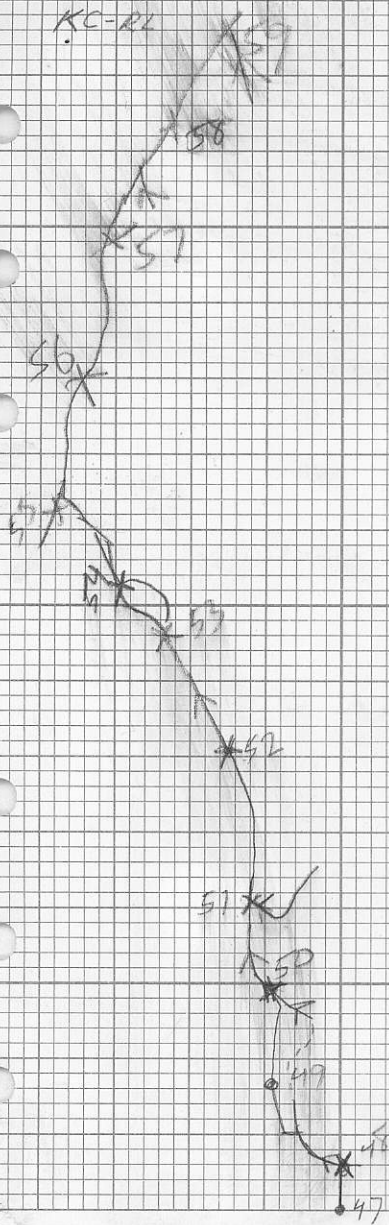
+60 creek junction @ 340°  
↓

- X51 ~~dark~~ brown sand & silt from new  
creek, 1 inch below surface

continue at 30°

KC-RL

MAY 14



KC-RL

MAY 14

51+40 @ 20°

51+150 @ 10°

X52 brown sand & silt from  
1 inch below pool at creek edge  
Alt 1220

X53 Dark brown silt & sand from  
overflow track of river  
N @ 380°  
Alt - 1100

X54 brown sand & silt from  
river (river @ 40°)  
path @ 30° Alt 580

+70 road river at 30°

+15° fork new creek @ 80°



X55 Elevation 520  
gray-brown sand & silt from  
red fork  
N @ 70°  
~~1100 @ 120~~

X56 gray-brown sand & silt

↑  
X57 same

KC-RL

MAY 14

57+60 creek @ 340°

X58 @ 60° red brown  
sand & silt

X59 stream at 10°  
river @ 90°

+70 @ 120° red-brown sand

X60 red brown sand from  
pool on creek

+70 20°

+90 creek enters @ 90°  
main @ 100°

+180 @ 340°

X61 @ 140°

red-brown sand & silt

530 Flag KC-DH-14



SANDSTONE  
SILTSTONE

CONGLOMERATE

VOLCANIC

CHERT

SHALE

LIMESTONE  
DOLOMITE

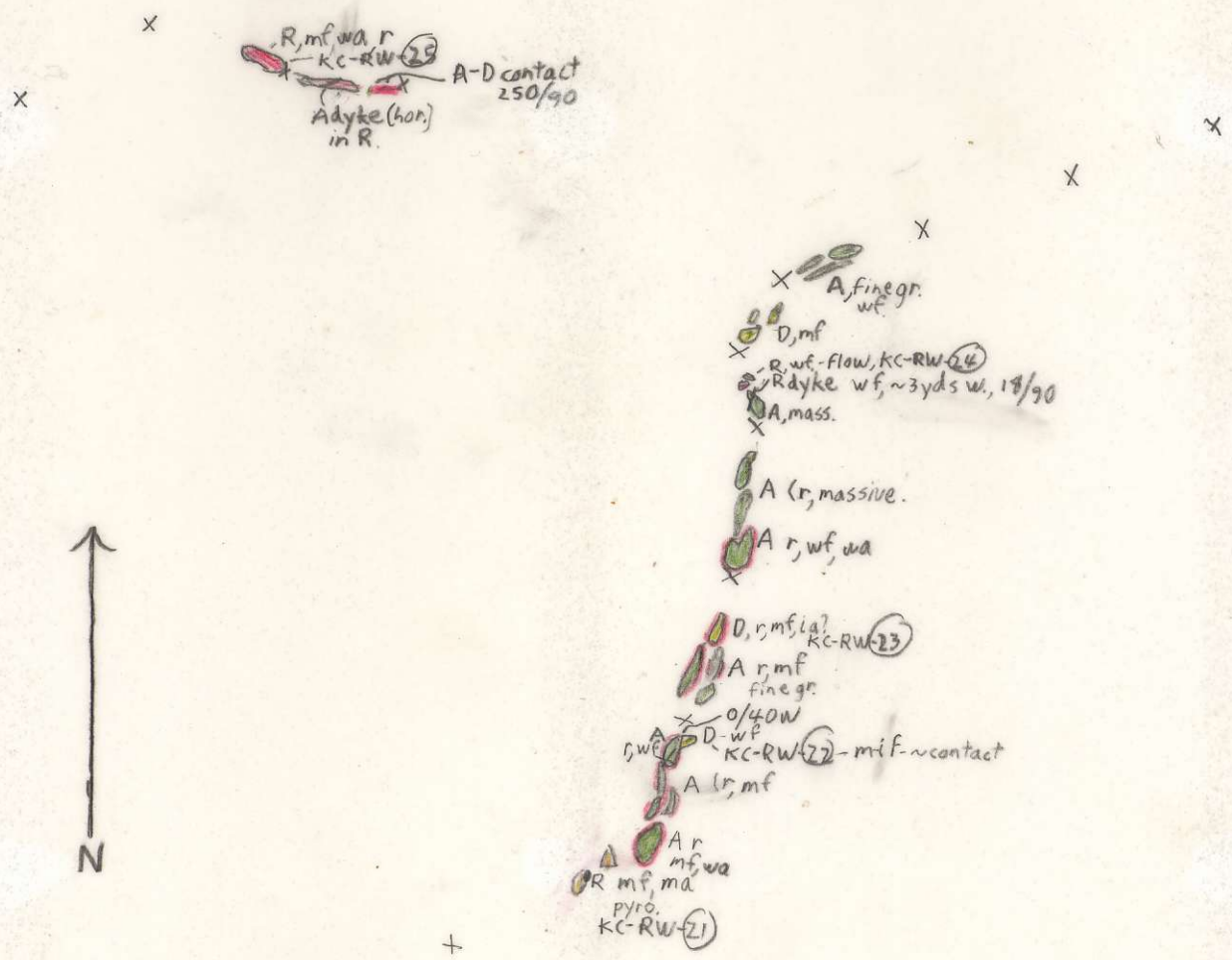
INTRUSIVE

GOSSAN,  
MINERALS

DO NOT WRITE ON OTHER SIDE OR USE COLOURS  
SPECIMEN SITE A.B...: OBSERVED GEOLOGY: DEFINED --- INFERRED - - - ASSUMED - - - -

Project <b>K-C</b>	NTS	Scale <b>1:10000</b>	Page <b>1</b> of <b>1</b>	Traverse
Sampler <b>R.W.</b>	Location, Target (words)		Sample Nos <b>KC-RW-21 to 25</b>	
Date <b>May 14</b>	photo no. <b>KC Area</b>	Cert. Nos		

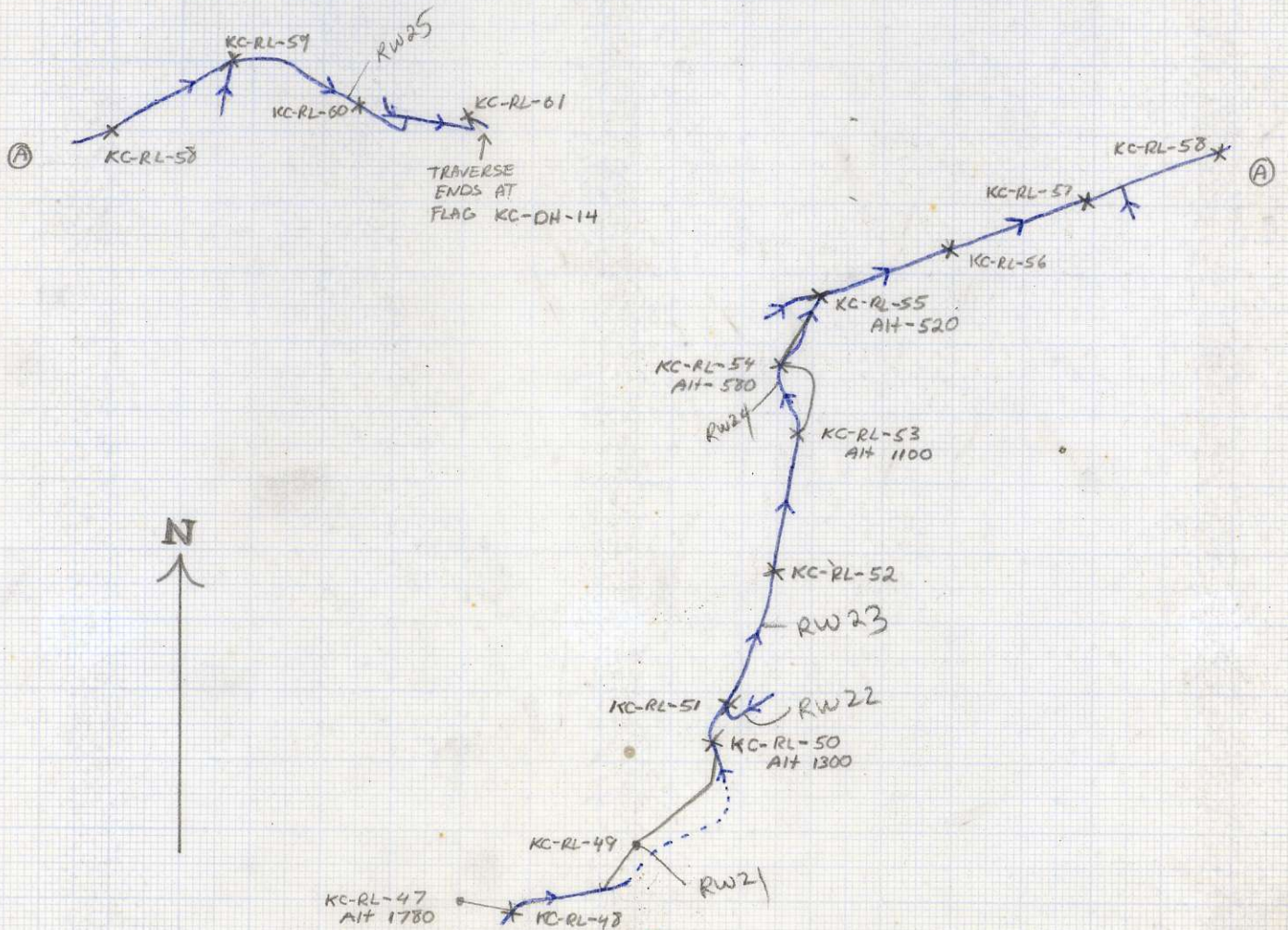
RL-Partner?



ASSAY: W U Z n Pb Mo Cu

MAY 14  
ROB LAZENBY (ROSS WATSON - MAPPER)  
SCALE 1:10,000

Partner



Road?  
Bog? Gas station?