

Metric
FIELD (S)

Sept. 16/81

SM

(1)

(I)

840977

King-Courte

K-C regional with DF.

R. D. PENHALL LTD., MADE IN VANCOUVER, CANADA
DUKSBAK WATERPROOF

KC-SM-315 to 317

1. 10,000

1400' 1460' DF-17

1300

1200' 1600' DF-16

1100

1000' 1600' DF-15

900

800' 1620' DF-14

700

600' 1680' DF-13

600

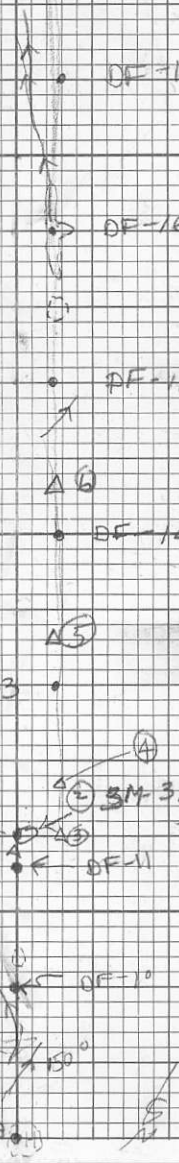
400' 1700' 1860' DF-12 SM-315 DF-11

300

200' 1960' DF-10

100

0 2080' DF-9



Sept 16/91 SM

(2)

start at 2080' just W of ridge top
in large clearing, ~6 km NW
of the headwaters of Short
Creek, head on bearing of 133°

133° 0 - 400 m

① float volss / AT fine gr. green
377m green brown weathered sand -
subangular frag.

② SM-318 of c. dark green volss (A
400m composition), fossiliferous - abundant
pelagopods, med gr. weathered
rusty brown quite soft m-hf,
ab MnO₂ staining, dark green
brown weathered sand

040° 50 m (Westward) to
get back on ridge top. bear
138° - 400 m → 2100 m

③ after 50m jog - float green volc.
SS.

④ 477m float SS + Sar interbedded
wr

⑤ 664m float Rt. subangular

1:10,000

2400
2300
2200
2100
2000
1900
1800
1700
1600
1500
1400

940'

1290'

1460'

1080



DF-20

DF-19

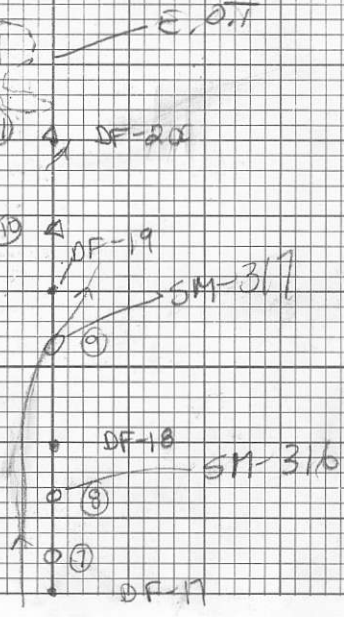
DF-18

DF-17

SM-317

SM-316

E.O.T



Sept 16/81 SM

(3)

(6) 864m float vol ss - fossiliferous

(7) 1451m green fossiliferous (paleo-poda present) volcanic ss, med gr. uniform black staining in nodular pattern - wr, wf.

(8) 1525 m o/c SM-316 pale blue with ~~discrete~~ dark green + white greens highly altered (tuffaceous?) rock? quite soft, med ss, weathered red, is greenish in colour with 1 hr. v. small o/c clay phenocrysts (halt) visible in altered ~~rock~~ - perhaps this is a v altered diatom dye rock not a tuff.

(9) 1730m SM-317 pale blue fine grained volcanic ss, in drusy (incred) w f.c. py. wf, 1 hr, 1 hem, very uniform ss.

(10) 1885m float ss plager

(11) 2000m float bluish volcanic
SS, ridges.

and traverse at large
clearing (helicopters landing pad)
in saddle between ridges.
Traverse to the N of a ridge
to the S.

Sept. 16/81 SM+PF
KC regional.

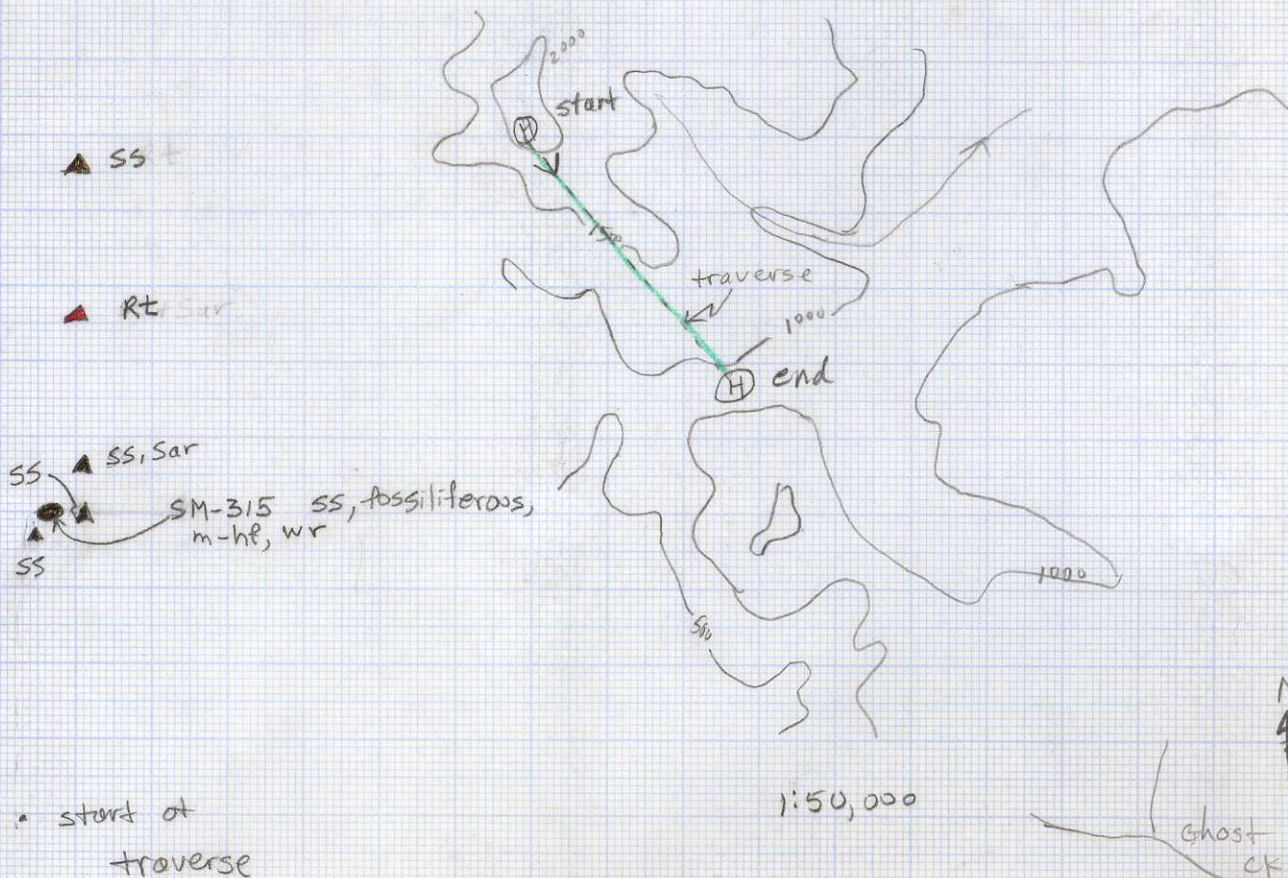
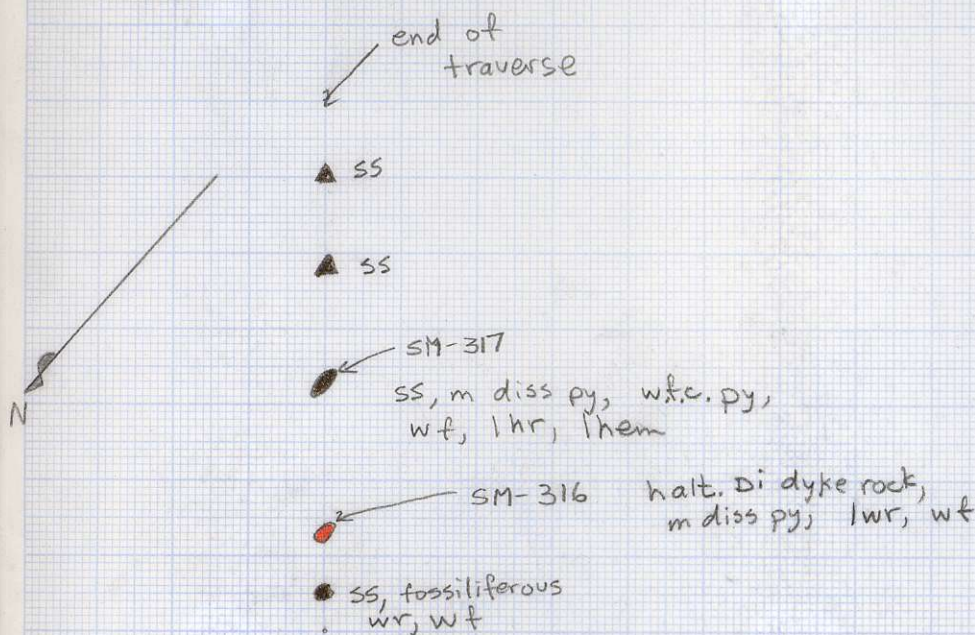
1:10,000

①

KC-SM-315 to 317

103 F/8 W

137°



Sept 16/81 SM + DF

1:10,000

KC regional

103 F/8 W

I

KC-DF-9 to 20

end of traverse



DF-20

DF-19

DF-18

DF-17

DF-16

DF-15

DF-14

DF-13

DF-12

DF-11

DF-10

DF-9

See Geology Map for a 1:50,000 Location Map

• soil samples

● open swampy area

H helicopter landing sites

