

(B)

SEPT 11th

BC COURTES

KC REGIONAL TRAV.

840969
King Courte
1981

BC + DF Sept 11

Regional detail on PF + DH line
North of Court

① fault zone w/ slick, 075/55 SE
Andesite tuff w/ hca alt, h r
h frac and shearing no visible py.
some boulders w/ cherty texture

for analysis BC-121

② A. tal tuff/feldspar green in colour
and heavy l met. h frac throughout
and hca veins through most of it
(hard spec)

③ Rhy w/ inclusions int. altered w chlor (in amy, r/
pyrite (some white)) greyish blotches and weather
to a quartzite-like clay that is int rusty,
int fracturing as well. for analysis BC-117
(hard spec)

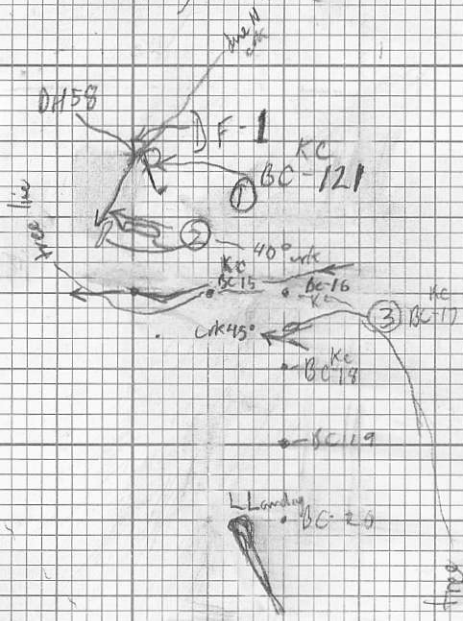
| | colour | org | pebbles | clay | sand silt |
|--------|--------|-----|---------|------|-----------|
| BC 115 | brown | 20% | 15 | 0 | 85 |
| 116 | blk | 60% | 5 | 10 | 25 |
| 118 | orange | 0 | 0 | 10 | 90 * |
| 119 | " | " | 5 | 20 | 75 |
| 120 | tan | 10 | 5 | 15 | |



-125°

← DH 5.6 (silt)

(silt)



Scale: 1:5,000

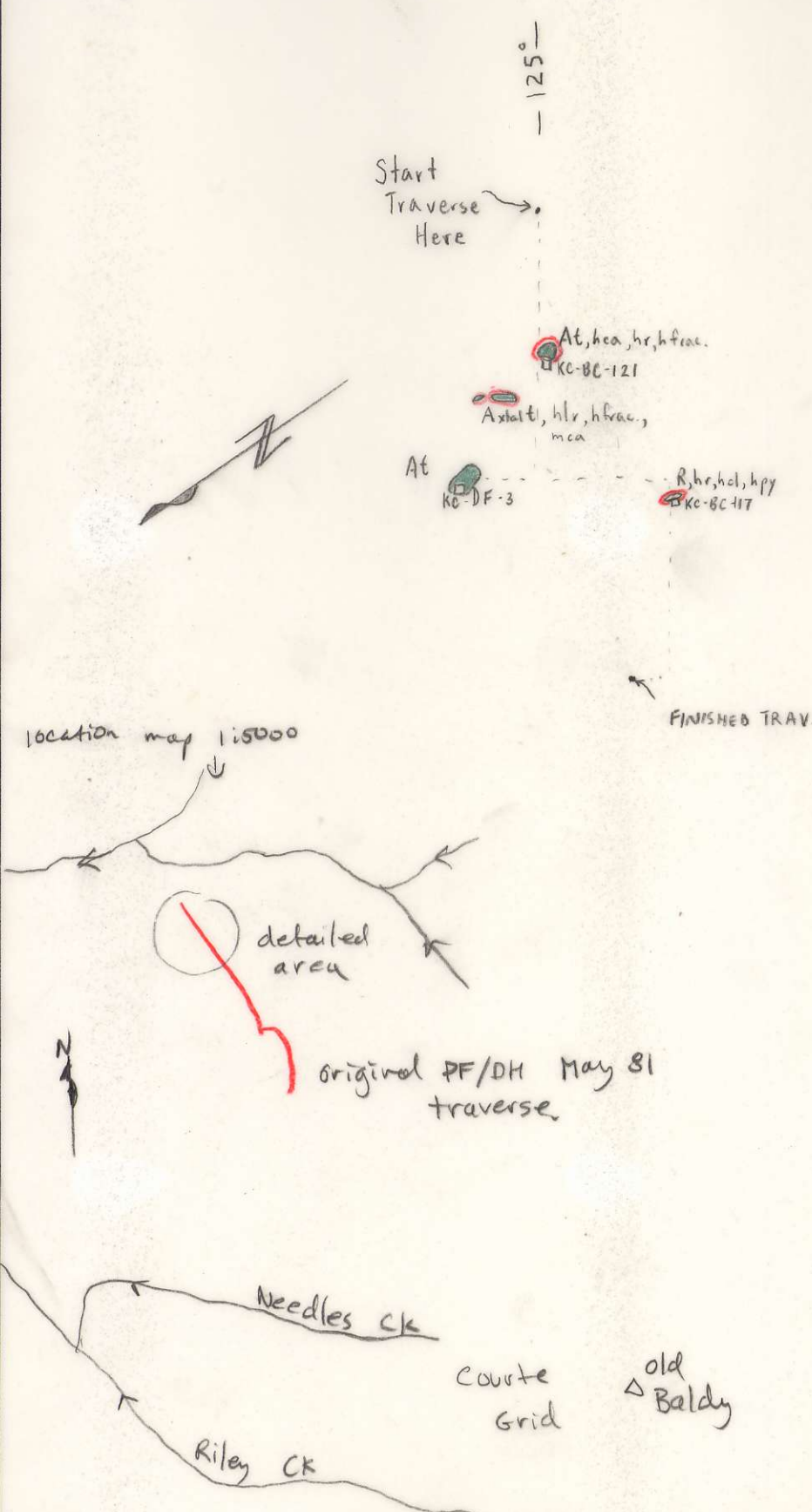
approach road location

to quarry

CIL 66620 - CSM
 ATTITUDES
 (100/40 N)
 SANDSTONE
 SILTSTONE
 CONGLOMERATE
 VOLCANIC
 CHERT
 SHALE
 LIMESTONE
 DOLOMITE
 INTRUSIVE
 GOSSAN,
 MINERALS
 SPECIMEN SITE A.B...: DO NOT WRITE ON OTHER SIDE OR USE COLOURS
 DON'T FORGET CONTOURS, DRAINAGE, NORTH ARROW, LAT/LONG, SAMPLE SITES, WORKINGS, TRAILS, GOSSANS, OBSERVED GEOLOGY: DEFINED --- INFERRED - - - - ASSUMED - - - -

| | | | | |
|-----------------------------|--|--------------|----------------------------|----------|
| Project KING-COURT REGIONAL | NTS 103 F/B W | Scale 1:5000 | Page #1 of 1 | Traverse |
| Sampler B COATES/D. FRANCIS | Location, Target (words) KC REGIONAL - 3 1/2 K. N. of Old BALDY | | Sample Nos KC-BC-117 & 121 | |
| Date SEPT 11/81 | photo no. | | Cert. Nos KC-DF-3 | |

(B)



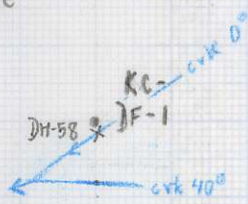
GEOCHEM: Cu Mo Pb Zn U W ASSAY:

(8)

— 125° —

Start Traverse Here →

DM-56

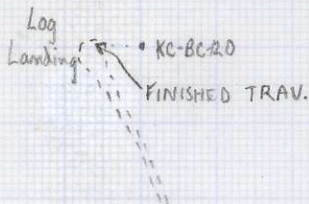


CLIFF
368°
CRK
INCANAN

KC-DF-2 KC-BC-16
KC-BC-15

• KC-BC-18

• KC-BC-19



SOILS + SILTS OF
REGIONAL TRAVERSE
SEPT 11th
J. FRANCIS & B. COATES

DETAILING EARLIER
LINE BY: P. FAGERLUND
D. HODGE
3 1/2 K. N. of Old Baldy

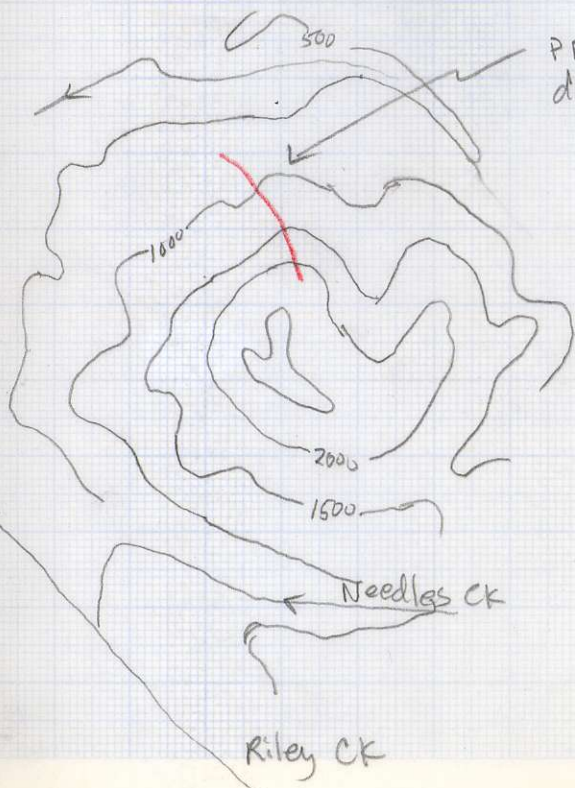
SCALE: 1 : 5,000

SAMPLE #S
KC-BC-115, 116, 118-120
KC-DF-1, 2

NTS: 103 F/8 W



1:50,000 location map



PF + DM traverse May 81
detailed (parts) by
B.C. & D.F.