

Alphabetical

B. COATES

1/2 daily samples
for I.D. in camp!

BEARING 304° MAY 12th
FROM DROP

* KC-BC-16

2' of Reddish O.C. weath. to soil in
river bed. Rock is Dacite
but with no vis. min.

(A) Rhyolite with flow banding

(B) Black Sedimentary? and

(C) Sandstone? with other Black Sed.?

* KC-BC-17 silt-sandy
Some organics

* KC-BC-18 (- Sedimentary Volcanics?)
Later Identified as Tuff
Strike approx. 20° E.
Dip. - approx. 22° to E.

* KC-BC-19

KC

B.C. May 11, 12

840964

King-Courte
1981

METRIC
FIELD (S)

MAY 11th

Kc-BC-12

Kc-BC-11

(11)

Chert and
with pyrite veins
STRIKE 30° EAST
DIP 50° TO N.

(13) Kc-BC-13 with pyrite veins

very rusty seepage soil (15) Kc, BC, 15

BRUCE
COPIES

K-C REGIONALS
GEOLOGY

K. C. B COATES 5

MAY 11th

BEARING 250° TO RIDGE TOP

* ① AT 300 M. GRAY-GREEN FLT. Andesite
KC-BC-3 SILT 300 M.

550 M CHANGE BEAR. TO DUE WEST

* ① KC-BC-1 Silt in slow running stream

* ② MISCELLANEOUS FLT 650

100 ON W. LINE

* KC-BC-2 Andesite

③ FLT. " Dacite mildly porphyritic st. rust.

④ Silt 150 m. W. 7.50 M.

* KC-BC-4 silt.

⑤ O.C. (small) 150 M, N. 8.00 M

weathered white

⑥ FLT. Rustd. { 8.40

⑦ O.C. Rustd 100 M, S. { 8.40

⑧ FLT BROWN NOT GREEN ROCK

Dayite porphyry WEATHERED BROWN SPECKS 90°

Chert O.C. 50 M, S at 8.60

⑨ O.C. Coarse granit
on LINE - 8.80 M

* ⑩ KC BC 10 O.C. From Stream

Andesite w/ py. ON LINE - 9.20

* ⑪ KC BC 12 silt ON LINE - 13.00

Fractured f Strike 64° R DIP 40°

* ⑪ KC BC 11 } WEATHERED TO N.
LIGHT RUST, GRAY

METRIC
FIELD (S)

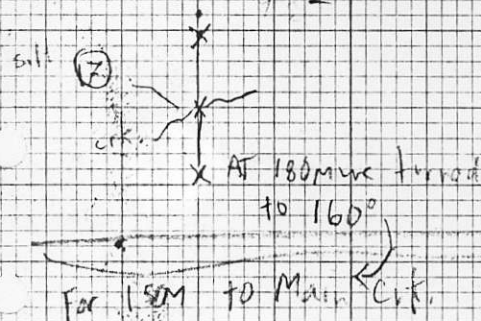
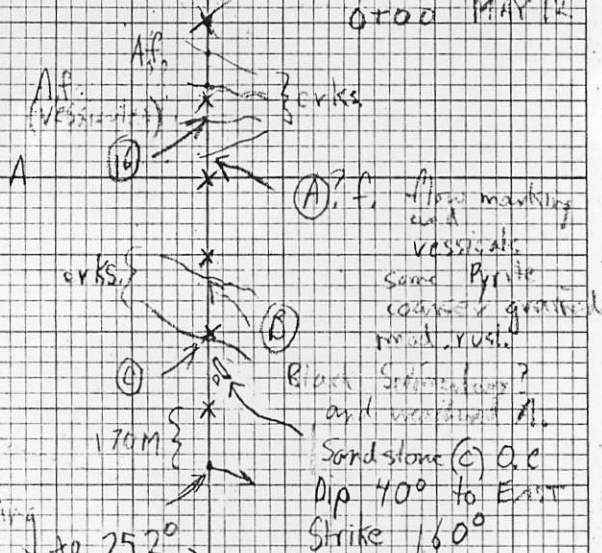
B. COMES

0100 MAY 12

Kc

Bc

12 May



(18) 10M UP FROM JUNCTION OF LITTLE CRK AND LARGE CRK

SEE SANDY'S NOTES
FOR REMAINDER
OF TRAVERSE!

WSD-02999 110 ATTITUDES 100/40 N

SANDSTONE SILTSTONE

CONGLOMERATE

VOLCANIC

SPECIMEN SITE A,B,...; DO NOT WRITE ON OTHER SIDE OR USE COLOURS

CHERT

SHALE

ROCK

SOIL

LIMESTONE DOLOMITE

INTRUSIVE

GOSSAN MINERALS

DON'T FORGET CONTOURS, DRAINAGE, NORTH ARROW, LAT/LONG, SAMPLE SITES, WORKINGS, TRAILS, GOSSANS, OBSERVED GEOLOGY: DEFINED --- INFERRED----

Project	NTS	Scale 1:10,000	Page 1 of 1	Traverse
Sampler BRUCE COATES	Location, Target (words)		Sample Nos	
Date MAY 11 7/81	photo no. KC REGIONAL	Cert. Nos		

Start of Trail
1900' d.

Ridge
↓

A BC-2

DP py

A

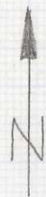
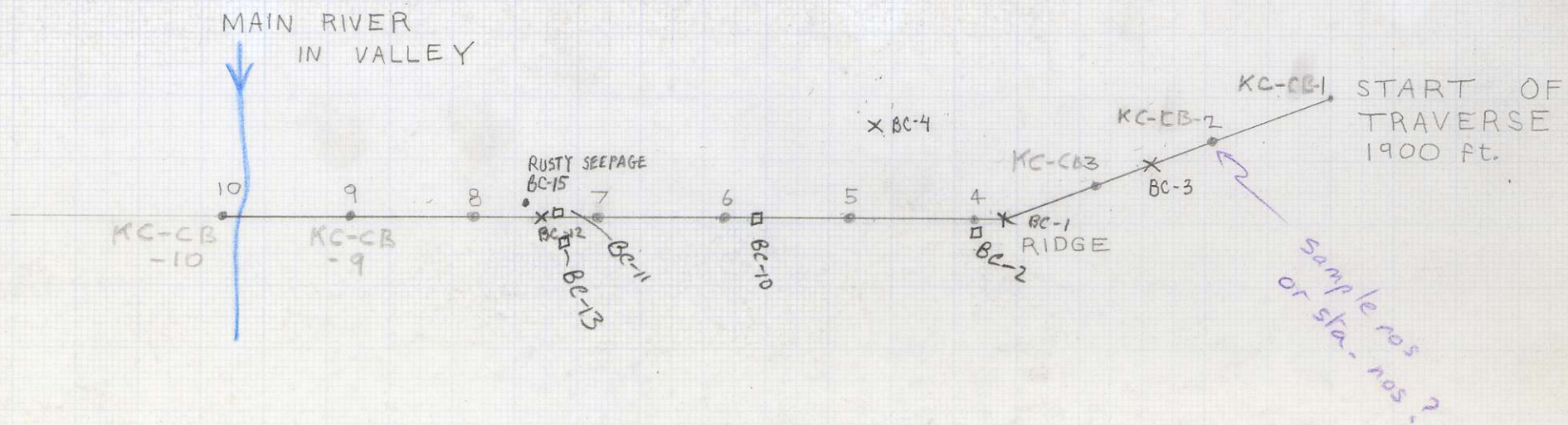
D.P. Sc DP py
A py BC-10

A amy, py BC-11
R dyke, ep, py BC-13
130 - 50 NE.

← Z

MAIN RIVER →

ASSAY: W U Zn Pb Mo Cu



COLIN BRADLEY
MAY 11
K.C. AREA
SCALE: 1:10 000