

840956  
Burnaby Strait

Ocean S. McArthur

May 4/82

Burnaby Island

Soil Samples.

Green Deltaic Pt - Burnaby St.

BI - m 2 (1-29)

		HORIZON	DEPTH (cm)	Color	Slope
1	0+00	A	20	Brown	Low
2	1+00	A			
3	2+00	A			
4	3+00	A			
5	4+00				
6	5+00				
7	6+00				
8	7+00				
9	9+00				
10	10+00				
11	11+00				
12	12+00				
13	13+00	SILT SAMPLE			
14	13+80				
15	14+00				
16	15+00				
17	16+00				
18	17+00				
			20	BR	Low

		HORIZON	DEPTH	COLOR	Slope
19	18700	A	20	Brown	Low
20	19100		20		Low
21	20100		20	Brown	Low
22	21100		25		
23	22100				
24	23100				
25	24100				
26	25100				
27	26100				
28	27100				
29	28100		↓	25	Brown

MAY 5, 1982

SAMPLE.	HORIZAN	DEPTH	COLOR	SLOPE	meter
DUP. 30	A	10	BROWN	L	28+00
31	A	10	BR	L	29+00
32	A	10	BR	L	30+00
33	A	10	BR	L	31+00
34	A	10	BR	L	32+00
SILT 35	SILT SAMPLE		CRECK		32+20
36	A	10	BROWN	L	33+00
37	A	10	BR	L	34+00
38	A	10	BR	L	35+00
39	A	10	BR	L	36+00
40	A	10	BR	L	37+00
41	SILT SAMPLE				37+30
42	A	10	BR	L	38+00
43	A	10	BR	L	38+00
	<del>ON POINT</del>				
44	ON POINT				
	A	10	BR	L	39+00
45	A	10	BR	L	40+00

30-35

SILT-35 - WIDTH - 1m  
DEPTH - 10cm  
FLOW - MED.

SILT 36 - WIDTH - 1m  
DEPTH - 12cm  
FLOW - MED.

SWAMP above 30m  
away.

Aaron S. Meentemeyer

May 6, 1982

Burlingame Manows

HOLLOW DEPTH Color Slope METERS

46-	SILT SAMPLE				0+00
47	A	10	BROWN	L	0+00
48	A	10	BR	L	1+00
49	A	8	BR	L	2+00
50	A	12	BR	L	3+00
51	A	8	BR	L	4+00
52	A	10	BR	L	5+00
53	A	8	br	L	6+00
54	A	10	br	L	7+00
55	A	10	br	L	8+00
56	A	12	br	L	8+00
57	A	10	br	L	9+00
58	A	10	br	L	10+00
59	A	10	BR	L	11+00
60	A	8	BR	L	12+00
61	A	8	BR	L	13+00
62	A	8	BR	L	14+00
63	A	8	BR	L	15+00
64	A	8	BR	L	16+00
65	SILT SAMPLE		BR	L	16+00
66	SILT SAMPLE				16+00
67	A	8	BR	L	17+00

MAY 7, 1982

NO.	HORIZON	DEPTH	COLOR	SLOPE	METER
68	A	8	BR.	L	0700
69	B	8	BR/GY	L	1400
70	C	8	BR	m	2400
71	A	8	BR	M	3100
72	A, B	8	BR	M	8400
73	A, B	8	BR/GY	M	5400
74	A, B	10	BR	M	6400
75	A	10	BR	S	7400
76	A	10	BR	L	8400
77	A	10	BR.	L	9400
78	A	10	BR	M	10400
79	A	10	BR	M	11400
80	B	12	Red/BR	M	12400
81	A	8	BR	m	13400
82	SILT SAMPLE (M)				13440
83	B, C	8	BR	L	14400
84	SILT sample (S)				14450
85	A, B	8	BR	L	15400
86	A	8	BR	ML	16400
87	B, C	7	BR	S	17400
88	A	8	BR	m	18400
89	B	8	BR	ML	18475

MAY 7, 1982

A. S. M.

## West SWAN Islands

NO.	HORIZON	DEPTH	COLOR	SLOPE	METER
90	A	8	BL	L	0+00
91	A	10	BR	L	2+00
92	A	10	BR	L	4+00
93	A	8	BR	L	6+00
94	A	8	BR	L	8+00
95					
96					
97					
98					
99					
100					

END OF TRAVEL

900 meters around  
island.

AGRON SCOTT MCACTHUR  
MAY 8, 1982

	HORIZON	DEPTH	COLOR	SLOPE	METER
95	A	10	BR.	L	1+00E
(96)	SILT SAMPLE			(S)	(1+20)E
97	A	8	BR	L	2+00E
98	B	8	BR	M	3+00E
99	B	8	BR	L	4+00E
100	A	8	BR	L	5+00E
50/101	A	8	BR	M	6+00E
102	A	8	BR	M	7+00E
(103)	SILT SAMPLE			(S)	(7+80)E
104	A	8	BR	M	8+00E
105	A	10	BR	M/S	9+00E
106	B	10	BR	M	10+00E
(107)	SILT SAMPLE				(10+20)E
108	B	10	BR	L	11+00E
(109)	SILT SAMPLE			(S)	(11+70)E
110	A	10	BR	L	12+00E
111	A	10	BR	L	13+00E
					14+00E

~~14+00~~ line log



START of line  
CA. #60 Beach  
sample.

A.S. McClathum  
May 8, 1952

	HORIZON	Depth	Color	slope	meter
112	A	8	BR	L	1+00 W
(113)	SILT Sample				(1+50 W)
114	A	10	BR	L	2+00 W
115	A	10	BR	L	3+00 W
116	A, B	8	BR	L	4+00 W
117	A	8	BR	L	5+00 W
(118)	SILT Sample				(5+50 W)
119	A	10	BR	L	(6+00 W)
120	A	10	BR	M	7+00 W
121	A	10	BR	L	8+00 W
122	A	10	BR	L	9+00 W
123	A	10	BR	M	10+00 W
124	A	10	BR	M	11+00 W
<del>125</del>					
<del>126</del>					

12 sections

Start - Bl - A2 - 74  
Out at Bl - M2 - 57 (9+00)

METRIC  
FIELD (S)

May 9, 1981 A.S.M.

Depth Color Slope Meter

125 A 10 BR M 1100 W

\* (126) SILT SAMPLE 1150 W

127 A 10 BR L 2100 W

128 B 8 BR L 3100 W

129 A 8 BR M 4100 W

130 A 8 BR L 5100 W

131 A 8 BR M 6100 W

132 A 8 BR M 1100 N

(133) SILT (MASON CK) 1190 N

134 B 8 BR M 2100 N

135 A 10 BR M 3100 N

(36) SILT SAMPLE 3175 N

137 A 10 BR M 4100 N

138 A 10 BR M/S 5100 N

139 B 6 BR S 1100 E

140 A 8 BR M 2100 E

(141) SILT SAMPLE (MASON CK) 2180 E

142 A 10 BR M 3100 E

143 A 10 BR M 4100 E

144 A 10 BR M 5100 E

145 A 10 BR M 6100 E

146 SILT (MASON CK) 7100 E

147 A 10 BR M 8100 E

~~148~~ 8100 E

end of line TTS

METRIC  
FIELD (S)

	May 10, 1982	A.S.M.			
	Horizon	Depth	Color	Slope	Meter
148	A	10	BR	L	
149	A	8	BR	L	
150	A	10	BR	L	
151	A	10	BR	L	
152	A	8	BR	L	
153	A	10	BR	L	
154	A	10	BR	L	
155	A	8	BR	L	
156	A	8	BR	L	
157	A	8	BR	L	
158	A	8	BR	L	
159	A	8	BR	L	

By air Photo  
Bdca 00?

Bolkus Is

150 - over quartz veins  
152 - mineralized area

A.S.M.  
MAY 13, 1982  
SECTION CODE TRAVERSE

ELEV.  
550

ELEV.  
700

10700B

NO.

187  
Creek

OUTCROP

NO. 188

700E

ELEV. 310  
OUTCROP

7+75\*

0100

Beach  
Start

R. D. PENHALL LTD., MADE IN VANCOUVER, CANADA  
DUKSBAK WATERPROOF

# Geology

(a)

~~intermediate~~? volcanic tuff  
greyish color  
rusty sections  
sub-labs  
highly fractured

(b)

~~intermediate~~  
greyish color, volcanic rock  
white specks  
mod. fractured  
small grained.

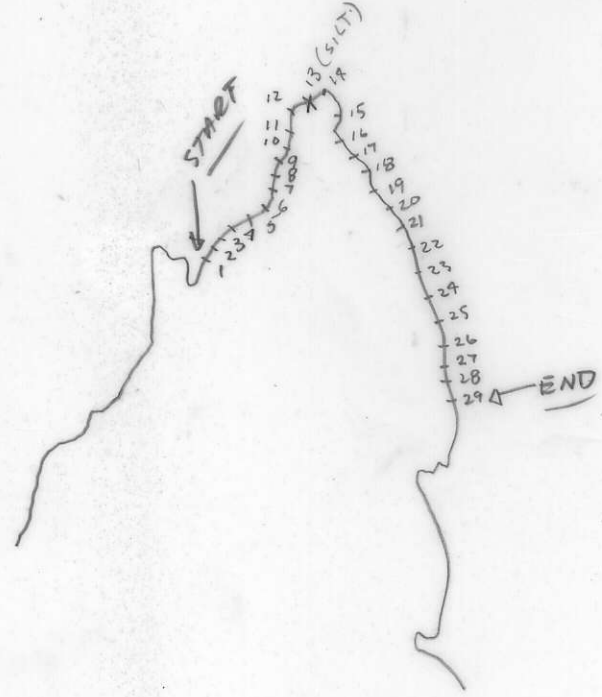
NAME: Aaron S. McARTHUR

Date	Area	Sample #15
MAY 4/82	Dolomite Pt - Burnaby ST	m2-1-29
MAY 5/82	Burnaby Narrows (South)	<sup>m2</sup> 30-45
MAY 6/82	SMITH PT. NORTH BOUND.	m2-46-67
MAY 7/82	SMITH POINT MOUNTAIN TRAVERSE	♀
	SWAN Island TRAVERSE	m2-68-94
MAY 8/82	SMITH POINT TRAVERSES	m295-124
MAY 9/82	Poole Inlet	m2-125-147
MAY 10/82	Balkys Is. (Boat)	m2-148-159
MAY 11/82	Slim inlet TRAVERSE	m2-160-163
MAY 12/82	- Slim inlet → HOUSTON PT. / HOUSTON INLET TRAV. NORTH	
<del>MAY 13/82</del>		m2-164 - 186
MAY 13/82 -	SECTION COVE TRAV.	m2-187-188

BC116662-0-C5M  
ATTITUDES  
(100/40 N)

Project <i>M 512</i>	NTS <i>103B6w</i>	Scale <i>4m = 1 inch</i>	Page <i>1</i> of <i>1</i>	Traverse
Sampler <i>A.S.M.</i>	Location, Target (words) <i>Dolomite Pt. Burnaby ST</i>		Sample Nos <i>B1-m2-1 to 29</i>	
Date <i>M. 4/82</i>	photo no.	Cert. Nos		

- GOSSAN, MINERALS
  - INTRUSIVE
  - LIMESTONE DOLOMITE
  - SHALE
  - CHERT
  - VOLCANIC
  - CONGLOMERATE
  - SANDSTONE SILTSTONE
  - ATITUDES
- SILT x SOIL • ROCK ■ PAN Δ WATER O
- SPECIMEN SITE A, B, ...; DO NOT WRITE ON OTHER SIDE OR USE COLOURS
- DON'T FORGET CONTOURS, DRAINAGE, NORTH ARROW, LAT/LONG, SAMPLE SITES, WORKINGS, TRAILS, GOSSANS, OBSERVED GEOLOGY: DEFINED — INFERRED - - - ASSUMED.....



- Soil samples 100m apart  
 - creek silt ①  
 - all A Horizon

GEOCHEM: Cu Mo Pb Zn U W ASSAY:

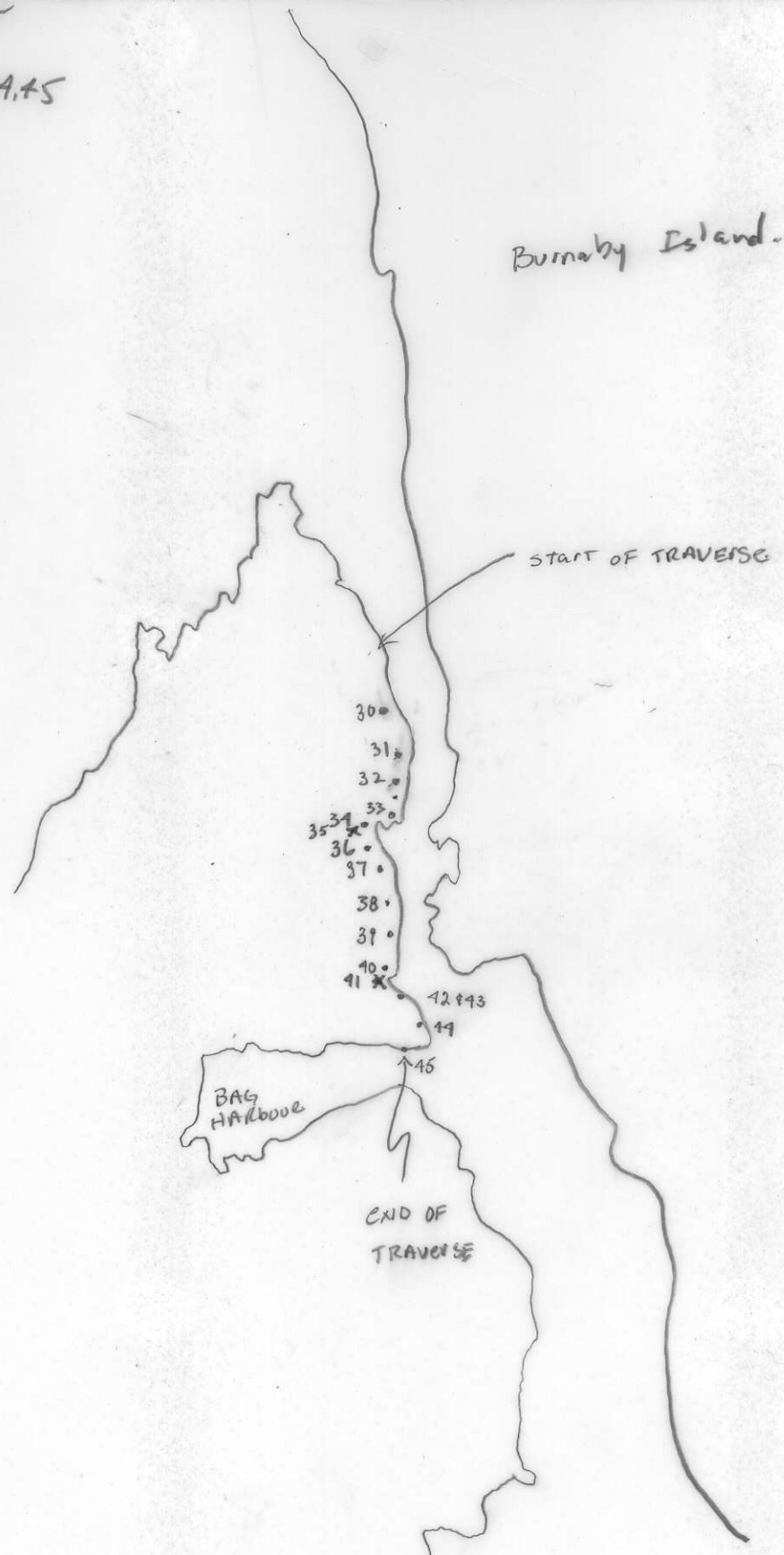


BCILL66620-CM  
ATTITUDES  
100/40 N

Project	m512	NTS 103 B6 w	Scale 4 miles / inch	Page 1 of 1	Traverse
Sampler	A.S.MCA	Location, Target (words)	BURNABY NARROWS SOUTHBOUND.		
Date	MAY 5 / 82	photo no.	B.C. 5093-102		
	PARTNER	S. McAllister			
	Soils - 30 - 34		Sample Nos 30-45 (SOILS & SILTS)		
	36 - 40, 42, 43, 44, 45		Cert. Nos		
	SILTS - 35, 41				
	ALL <u>A</u> HORIZON				

- GOSAN, MINERALS
- INTRUSIVE
- LIMESTONE DOLOMITE
- SILT X SOIL
- ROCK
- SHALE
- WATER O
- CHERT
- PAN Δ
- VOLCANIC
- SPECIMEN SITE
- CONGLOMERATE
- SANDSTONE SILTSTONE

DON'T FORGET CONTOURS, DRAINAGE, NORTH ARROW, LAT/LONG, SAMPLE SITES, WORKINGS, TRAILS, GOSSANS, OBSERVED GEOLOGY: DEFINED --- INFERRED - - - ASSUMED.....



GEOCHEM: Cu Mo Pb Zn U W ASSAY:

BCILL66620--CSM  
ATTITUDES  
100/40 N

Project	M512	NTS 103B6w	Scale 4m = 1inch	Page 1 of 2	Traverse
Sampler	S. McAr	Location, Target (words)	Smith Pt.	Sample Nos	M2-46-67
Date	MAY 6/82	photo no.	BC-5093-101	Cert. Nos	

Partner S. McAllister

Morseby ds.

Burnaby Island

○ SOIL SAMPLES  
DUPLICATES 45, 46  
X = SILT-46, 66

Camp

BAG Harbour

Overlay for a photo  
BC 5093-101  
↑ N

- GOSSAN MINERALS
- INTRUSIVE
- LIMESTONE DOLOMITE
- SILT X SOIL ● ROCK ■
- SHALE
- CHERT
- VOLCANIC
- CONGLOMERATE
- SANDSTONE SILTSTONE

DON'T FORGET CONTOURS, DRAINAGE, NORTH ARROW, LAT/LONG, SAMPLE SITES, WORKINGS, TRAILS, GOSSANS, OBSERVED GEOLOGY: DEFINED — INFERRED - - - ASSUMED.....  
SPECIMEN SITE A,B...; DO NOT WRITE ON OTHER SIDE OR USE COLOURS

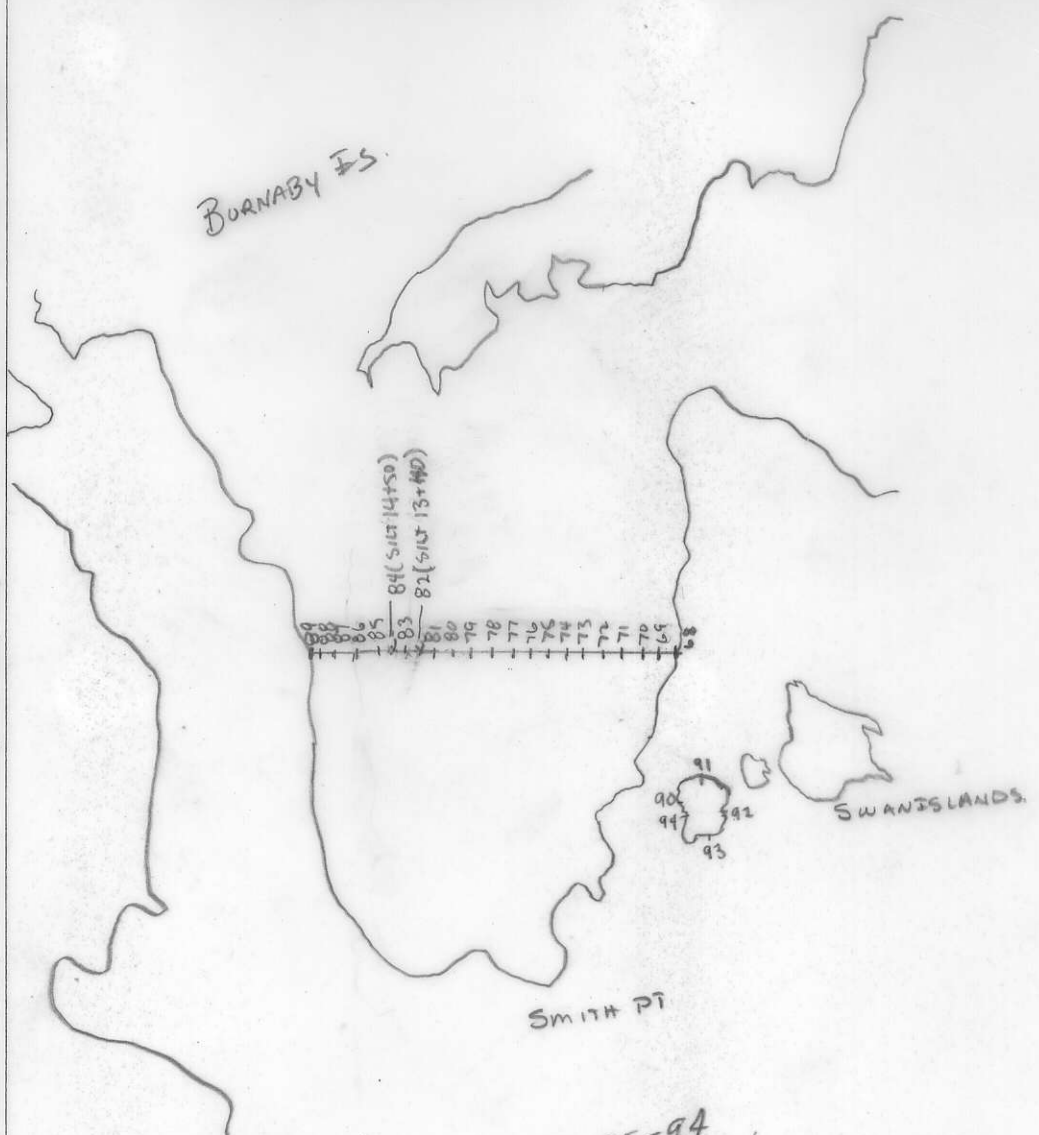


GEOCHEM: Cu Mo Pb Zn U W  
ASSAY:

Project <i>M512</i>	NTS <i>103 B&amp;W</i>	Scale <i>4m = 1 inch</i>	Page <i>1</i> of <i>1</i>	Traverse <i>1</i>
Sampler <i>ASM</i>	Location, Target (words) <i>SMITH PT. TRAVERSE</i>		Sample Nos <i>M2-68-94</i>	
Date <i>MAY 17/82</i>	photo no. <i>SWAN IS TRAVERSE</i>		Cert. Nos	

- GOSSAN, MINERALS
- INTRUSIVE
- LIMESTONE DOLOMITE
- SILT x SOL o ROCK ■
- SHALE
- PAN Δ WATER O
- CHERT
- VOLCANIC
- SPECIMEN SITE A.B. ...; DO NOT WRITE ON OTHER SIDE OR USE COLOURS
- CONGLOMERATE
- SANDSTONE SILTSTONE

DON'T FORGET CONTOURS, DRAINAGE, NORTH ARROW, LAT/LONG, SAMPLE SITES, WORKINGS, TRAILS, GOSSANS, OBSERVED GEOLOGY: DEFINED ——— INFERRED - - - - ASSUMED.....



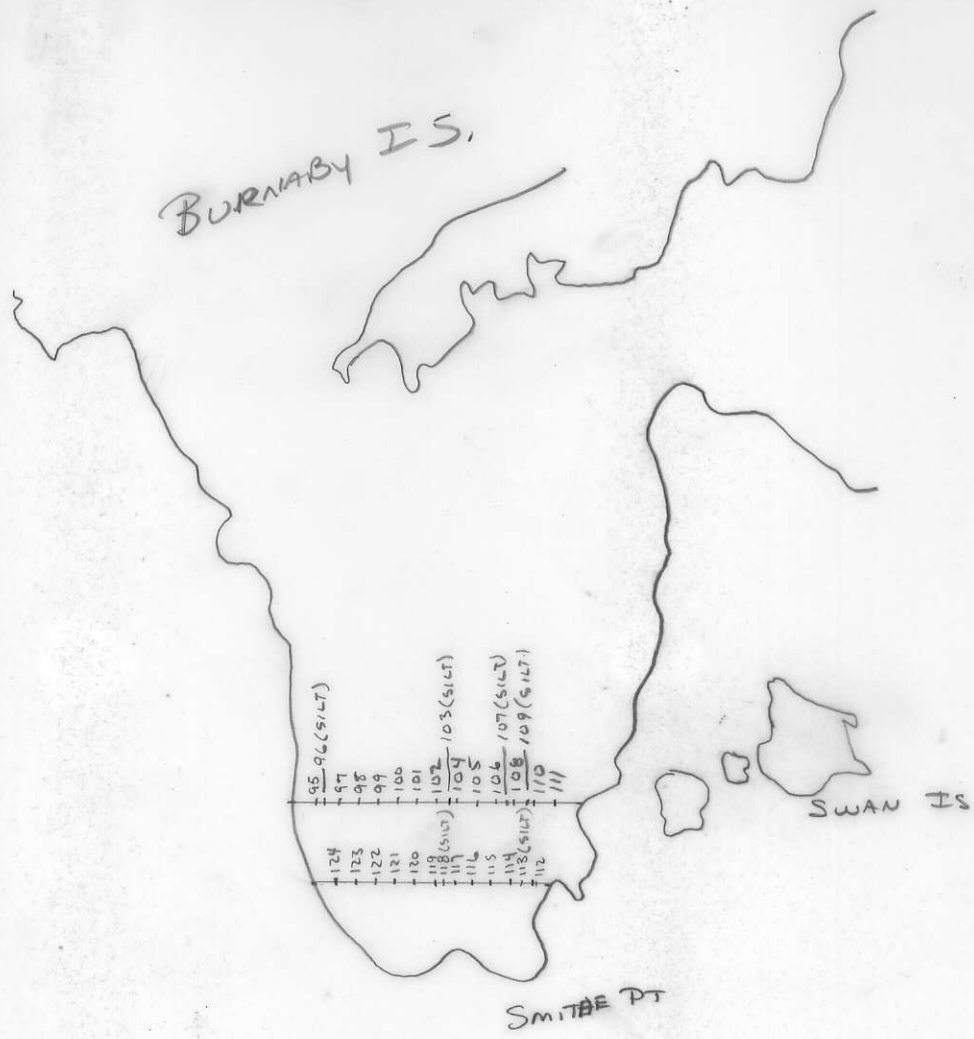
Soils 68-81, 83, 85-94  
Soils taken every 100 meter  
SILTS 82, 84

GEOCHEM: Cu Mo Pb Zn U W ASSAY:

Project	MS12	NTS 103 B6w	Scale	4m=1inch	Page	1	of	1	Traverse	1
Sampler	ASM	Location, Target (words)			Sample Nos			M2-95-124		
Date	MAY 8/82	SMITHE PT TRAVERSE photo no.			Cert. Nos					

PARTNER D. Hodge

- GOSSAN, MINERALS
- SANDSTONE SILTSTONE
- CONGLOMERATE
- VOLCANIC
- SPECIMEN SITE A.B...: DO NOT WRITE ON OTHER SIDE OR USE COLOURS
- CHERT
- SHALE
- LIMESTONE DOLOMITE
- INTRUSIVE
- SILT X SOIL
- ROCK
- PAN Δ WATER O
- SHAPE
- WATER O
- SHALE
- CHERT
- CONGLOMERATE
- VOLCANIC
- SPECIMEN SITE A.B...: DO NOT WRITE ON OTHER SIDE OR USE COLOURS
- SANDSTONE SILTSTONE
- ATTITUDES (100/40 N)

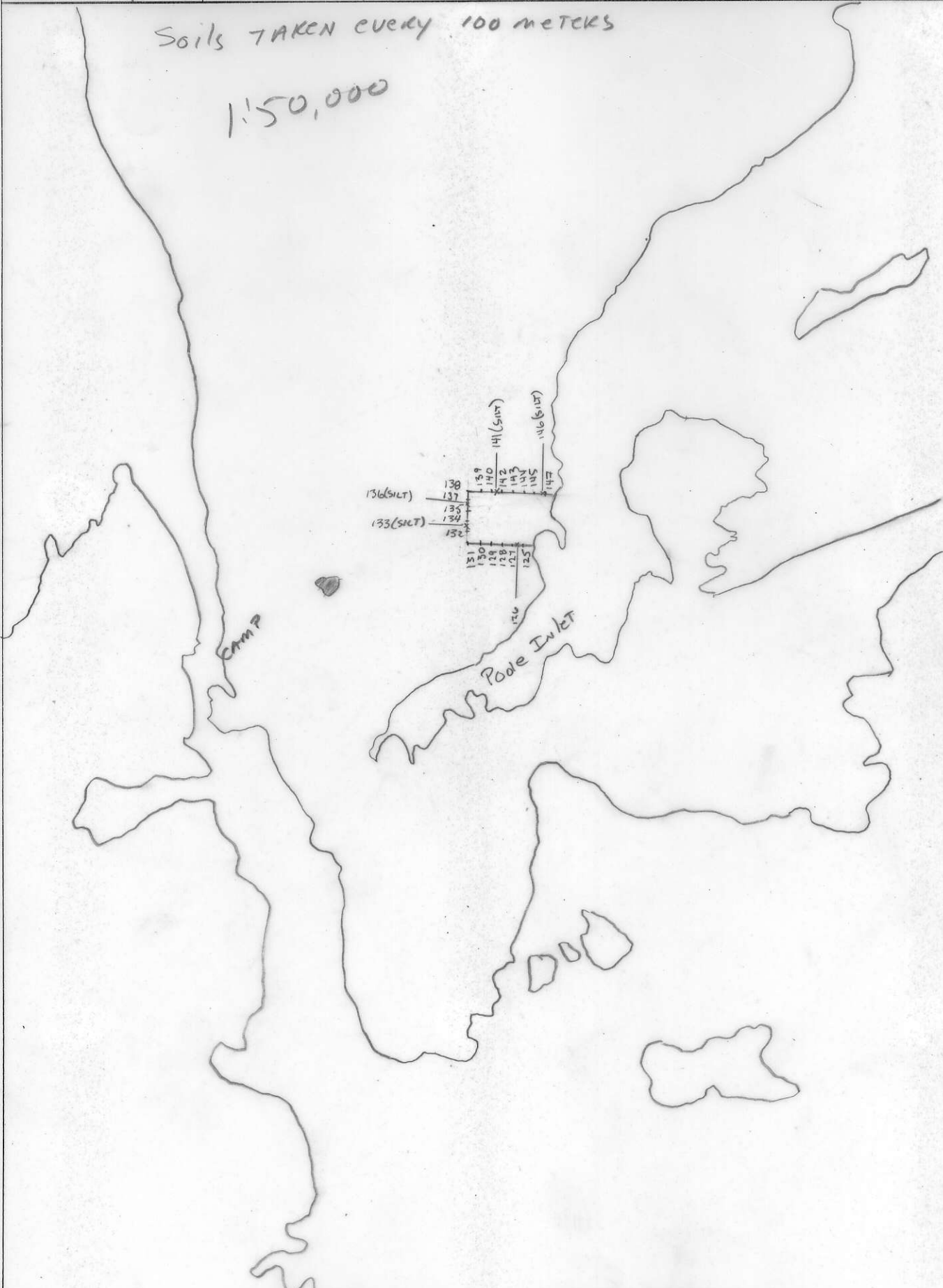


DON'T FORGET CONTOURS, DRAINAGE, NORTH ARROW, LAT/LONG, SAMPLE SITES, WORKINGS, TRAILS, GOSSANS, OBSERVED GEOLOGY: DEFINED — INFERRED - - - ASSUMED.....

GEOCHEM: Cu Mo Pb Zn U W ASSAY:

Project <i>M512</i>	NTS <i>103 B6w</i>	Scale	Page <i>1</i> of <i>1</i>	Traverse
Sampler <i>A.S.M.</i>	Location, Target (words) <i>Pode Inlet</i>		Sample Nos <i>M2-126-147</i>	
Date <i>MAY 9/82</i>	photo no.		Cert. Nos	

*Soils TAKEN every 100 METERS*  
*1:50,000*



- GOSSAN, MINERALS
- INTRUSIVE
- LIMESTONE DOLOMITE
- SHALE
- CHERT
- VOLCANIC
- CONGLOMERATE
- SANDSTONE SILTSTONE
- WATER
- PAN
- ROCK
- SOIL
- SILT
- X

DON'T FORGET CONTOURS, DRAINAGE, NORTH ARROW, LAT/LONG, SAMPLE SITES, WORKINGS, TRAILS, GOSSANS, OBSERVED GEOLOGY: DEFINED ——— INFERRED - - - - ASSUMED - - - -

GEOCHEM: Cu Mo Pb Zn U W ASSAY:

W50-29992-0-1C1C  
 ATTITUDES  
 (100/40 N)

Project <i>MS19</i>	NTS <i>03B6w</i>	Scale <i>4m. = 1x1CH</i>	Page <i>1</i> of <i>7</i>	Traverse
Sampler <i>A.5m</i>	Location, Target (words) <i>Bollos Is.</i>		Sample Nos <i>B1 M2-148-159</i>	
Date <i>MAY 10, 1952</i>	photo no.		Cert. Nos	

*PARTNER S.M.C.  
 SOIL SAMPLES*



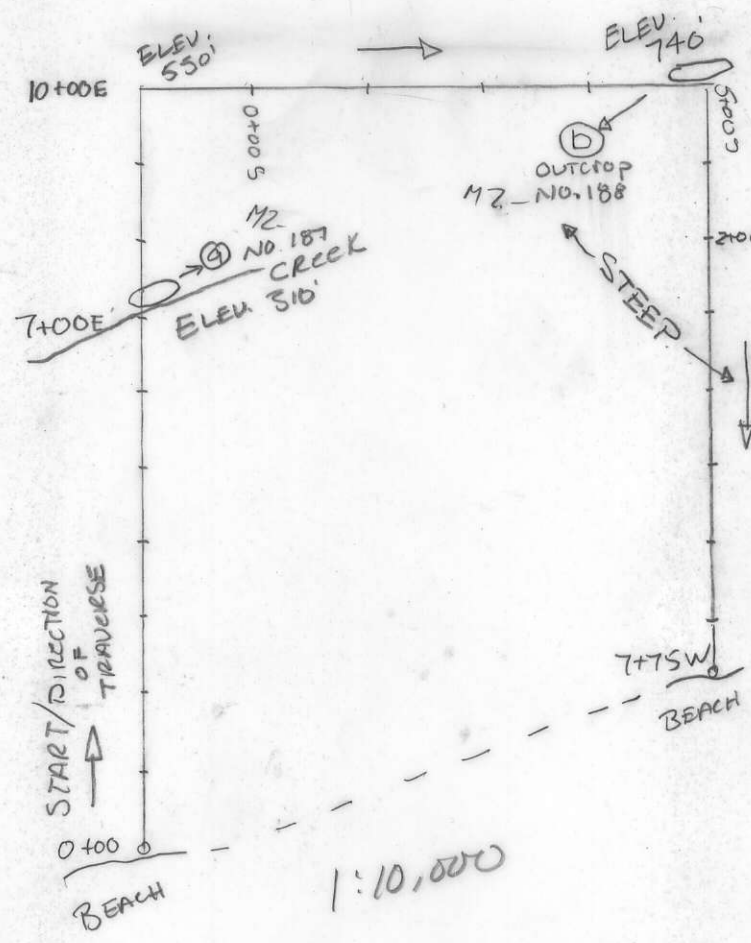
-  SANDSTONE  
 SILTSTONE
  -  CONGLOMERATE
  -  VOLCANIC
  -  CHERT
  -  SHALE
  -  LIMESTONE  
 DOLOMITE
  -  INTRUSIVE
  -  GOSSAN,  
 MINERALS
- SPECIMEN SITE A.B...: DO NOT WRITE ON OTHER SIDE OR USE COLOURS  
 PAN Δ WATER O  
 ROCK ■  
 SILT X SOIL ●  
 DON'T FORGET CONTOURS, DRAINAGE, NORTH ARROW, LAT/LONG, SAMPLE SITES, WORKINGS, TRAILS, GOSSANS, OBSERVED GEOLOGY: DEFINED ——— INFERRED - - - ASSUMED.....

GEOCHEM: Cu Mo Pb Zn U W  
 ASSAY:

Project <b>M12</b>	NTS <b>103B6W</b>	Scale <b>1:10,000</b>	Page <b>1</b> of <b>1</b>	Traverse
Sampler <b>ASM</b>	Location, Target (words) <b>Section Cove</b>		Sample Nos <b>M-2-187, 188</b>	
Date <b>May 13</b>	photo no. <b>TRAVERSE</b>		Cert. Nos	

- GOSSAN MINERALS
- INTRUSIVE
- LIMESTONE DOLOMITE
- ROCK
- SHALE
- CHERT
- VOLCANIC
- CONGLOMERATE
- SANDSTONE SILTSTONE
- SPECIMEN SITE A.B.: DO NOT WRITE ON OTHER SIDE OR USE COLOURS
- WATER O
- PAN Δ
- SOIL X
- SILT X

DON'T FORGET CONTOURS, DRAINAGE, NORTH ARROW, LAT/LONG, SAMPLE SITES, WORKINGS, TRAILS, GOSSANS, OBSERVED GEOLOGY: DEFINED ——— INFERRED - - - ASSUMED.....



ASSAY: GEOCHEM: Cu Mo Pb Zn U W