

APRIL 29/82

SM

①

BULK SAMPLING

840944

WITH TZ

AH

SM Arthur

Silt + Bull sample at road

B2-1 Chinukundl Creek -
called Miller Creek on
road sign -south side of river ~ 40m
from bridge

flect

70% diorite - granodiorite

20% mafic volcanics porphyritic
& mat.

10

- 10% quartz rich rocks

B2-2 Tlell River

~ 100 m N of bridge on W side
of river

30% diorite

10% Andesite P

50% dark f.g. (basalt) volcanics

10% - S. tuffs together

82-3 Johore River

of fine small pebbles

5% quartz

15% dark - quartz druse

18% andesite

10% rhyolite

5% agglomerate / (Basalt)

30m E of Bridge
south side of river

82-4

Blocky pebbles W of

Bridge 40m W side of river

0% - volcanic fg. &

dark green - andesite - Basalt

area of highly thermitized

rock - bright red - aggl.
pebbles

10% - pebbles

80% - basalt - Basalt

B2-5 ~~main~~ ~~river~~
W side of river 10m S of
bridge

40 Rf
20 ~~Bayn~~
30 ~~1 only~~
10 ~~R. of~~

B2-6 ~~phantom~~ creek
SW side ~ 40m below(S)
of bridge

60-70% argillite
 siltstone
10% rhyolite
10% andesite agg

B2-7 Phantom Creek
SE side 10m
below bridge
{ sandstone
80% { siltstone
 argillite
15% porphyritic andesite
5% rhyolite

~~B28~~ Brent Creek
↳ ~~silt & wood~~
no sample no gravel,
mostly organic!

B7-8

Monna Creek

Siltstone outcrop

& forest.

May 30/82

SM

①

Bulk Sampling by truck
Kill South Mnear AH Hook, Kill Creek
JAT 2 like

B2-9 Cold Creek

SW side of river - Dm pa
bridgeshydt
Silliman, breccia
siltstone
arenite,B2-10 - stream 1 south of
Gospel - camp creek,

NW of bridge SW

shydt
Ap
amy. A/b
limestoneB2-11 Needles creek - where it
crosses the road(Gospel Creek - no gravel.
Ap, amy A, pred volcan
Dr

B2-12 Riley Creek
when it crosses road.

B2-1 to B2-12 Bulk silt
sample

SB2-1 to SB2-12 silt sample

APRIL 30 SM

②

follow up of 300 pp
An in Rdy on
coast of Penzell Sound
SM-311 (1981 number)

run log landing

SM

AH

TZ

Scott M

RS-52-1 to 4

Rennell

Sound

~~52-4~~
52-3

B

~~R KC-SM-311~~

52-2 * ^{Di} SM-312

52-1 * R Rdy

island

April 30/87 SM

(2)

RS-52-1

Rhyolite dyke, ir, mt
 m diss py, dark grey colour
 3m wide dark grey - black
 shergens, cutting rock.

RS-52-2 site of KC-SM-312
 altered (Kamulsa (Dionite))
 m r, i f, m ca, w cav

RS-52-3 2nd Rhyolite dyke -
 (to the NW) resampled #
 KC-SM-311 ir, mt, grey
 in colour mod, soft, w diss
 py.

RS-52-4 well rock on NW
 side of dyke, altered Basalt
 m ep, m cl, m diss py
 (Kamulsa?)

June 6/82

SM

①

looking at Creston clowns
with TMS + GW

SM

at diller's camp on ridge 1980'
core rocks 1980 note - rock
is accordioned - hard to see
all lots of gabbro - some
some rhyolite - very siliceous -
cut by small quartz veins,
bedded - siliceous limestone -
& some disseminated pyrite.

CI-1 Sample at west end of trend
near ddh just north of camp
on ridge (10m)

CI-2 - ~ 5m E of CI-1 (5m)
TMS

CI-3 - from 7m well. 7m E of
CI-2 - (7m)
GW

CI-1 - pale mottled green andesite.
not silicified, & less pyrite

CI-4 17m mark sil zone with
green fine gr. volcanic - andesite?
had wood
some rhyolite
present

1 cm = 12 Mm

Total Trend

Length

5.8 m

CI-6



30m

CI-4



16m

12m

CI-3



8m

CI-2



4m

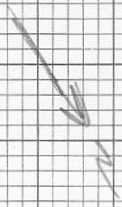
CI-1



0300



trapped trends



C1-5

m 38

June 6/82 (2)

fine grained, weakly
bonded, pale green, silty intermedial
or acid volcanic - rhyolite?

Mitchell Inlet.

q-vein - $40^{\circ} \rightarrow 46^{\circ}$
mined out w/ pillow B
very similar to security. 1

SM June 5/82 (1)

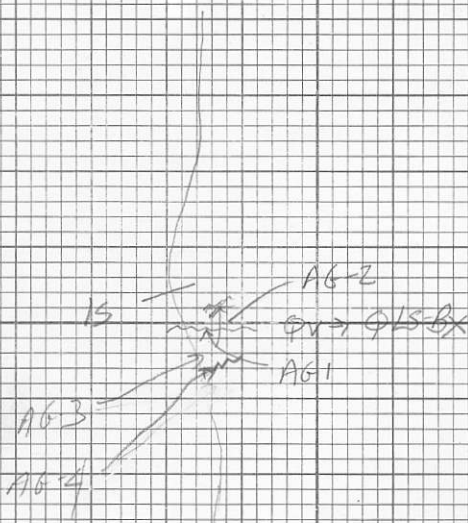
To Alida, Hurley Bolus Jr.

- checking out Alida Gold
claims + Bolus prospect!
with Galfrey Walton, Tim
Sandberg



1:5000

See top map 10386W



SM JUNE 5/82

(2)

at J.C. Stephens 00N 00E "fold showing"

AG-1 - sample from eastward trending
 ~ 82° silicified zone cutting black
 limestone (Kungu) quartz veins are
 up to 2 cm wide and extend into
 quartz-limestone breccias, both
 (20 cm) both
 (x) pyrite + Qtz is mod. rusty
 30m x 1m

AG-2 Sample from white veins lenses
 adjacent to silicified breccia, 1m dia
 py. "

(x) some of the quartz veins + breccia are
 open,

AG-3 - see Bodfey Walton's note

AG-4 quartz-limestone breccia
 w/ most open & closed quartz
 veins, 20 cm wide, + ends
 064°

AG-5 A. & py + pyrr. - weakly
 magnetic - from E coast of
 Alder Island - island
 (A-80-214 + A-89-07)

June 5/82

(3)

Bolhus Island

B1-T2-1 soil on OH+AK-
line between B1-A2-1057/06
~ 50m E of 1057
B horizon rusty red sandy
& clay 40cm deep

B1-T2-2 massive quartz breccia
vein 2m wide x 10m long
trending 160° resampling
of B1-02-35 - across vein

Oct 14 / 82

SM

①

regional triv. on road
just N of mosquito lake
heading west. well
J.M.

m

o - at junction of HMC + road to
west.

222, 30m to N. d/c, pale green massive
sandstone well fractured, no
visible bedding, mqr.

1354 - side of road (52-1) dark green
sandstone, concentrically weathered,
mqr.

1534 (52-2) Dp, 20% d/c, dark
green dolomite matrix, wb

1850 / dark grey sandstone cl + heavy
fracture surfaces, wr, mt.

2104 road to the N, overgrown
with grass + alders.

Y → N

2807

creek

2848

overgrown road to the N

Y → N

3156

SM Oct 14

(2)

(52-3) black to grey banded
amy. argillite 100°/86°E ch
sticks, mod. py - Kungwa

3250

creek

3314

Basalt amygdaloidal cherts
calcite infilling vesicles, dark
green, highly chloritized basalt

3386

highly chloritized porphyritic basalt,
20% pleg δ - white lath
shaped.

3600

quarry CP - Mosquito #1
Tag No 70508, 35, 5E

Oct 1/81

amygdaloidal basalt, incl
mt, mca vlt

3875

(52-4)

very green amy. B, incl
ca, infilling vesicles, white

4157

road to the NE Overgrown

4704

road to West - at ~~the~~

Oct 14/82

SM

(3)

4818

road to E.

5111

creek crossing road to

5817

CP

451E

Mosquito #1

6150

road to E.

6635

turn around "end of the road"
for us

6600

road to N - overgrown
reset chain to 0.0. returns 6150 in junction take
road to E. reset to 0

400

junction to ETS take
road to E. road to 55 a
log landing ~200m long

740

end of road.

Oct 15/82

SM

①

Regional trav on roads
 N of Mosquito Lake, west
 SM. BR 50 - road N of
 West main.

S2-5 to S2-11

m

901

(S2-5) blue grey massive
 siltstone mt, 5% pyrite
 m cl. v.

5701

(S2-6) agglomerate, ir/c,
 5% pyrite, vol. fragments
 1-15 cm, dark grey matrix.

9001

green med gr. sandstone, blocky
 fracture.

980

ir, hf ss,

10841

grey ss, mt, m f,

24571

road washed out!

trav down East main.
 reaches 0 at junction of East
 main + N main.

850

S2-7. Blocks, 3% py m cl.

Oct 15/82 SM

(2)

~~1008 Br E10 go down this one~~1229 / mr silty sh, mf - w concntr
weathering

2125 / end of road.

o reset to o at junction of Br E10
+ East main, going down
East main7301 pale grey med. gr ss mt.
wr, no. sulphide.

9301 turn up towards E21 (to N)

1035 / end of road - pt of trees.
over road

o reset to o back on E main line

1180 spur to SE this one,
E1 main to SE.

13

1380 continue on E30, E1A to L E

1680 / (52-8) well bedded silstone
block to dk grey, mr,
140°/62° NE, mt, interbedded
silstone + sandstone.

Oct 15/82

SM

(3)

1772 - spin to the NW towards
white Swan Lake, take this
road

2880 / (52-9) massive grey green ss 5%
pebbles, 130°/62°NE

2946 logs over road stop here

0 reset to 0 of to the BRE34
off of Br E 30

553 spin off to the SW

831 small quarry 112°/74°NE,
grey shale, wr, if into
shall 1-3cm fragmented
with thin, 5-15cm, ss into
beds

892 end of the road - huge log
+ washout, ~~quarry~~

0 reset to 0 go down Br E33
off of Br E 30

1151 / quarry, dark grey - black
massive ss, msh - AA?

Oct 15/82

SM

④

1409/ [52-10] grey shale, if + fissile

hr.

150/ end of road,

o end of spur

[52-11] Vol SS grey, m-cgr,
3% pyrit, massive, blocky,
fractured.

AT??

100 Vol SS, grey, mt,

Oct 16/82 SM

①

road trace w/ JK.

52-12 to 52-14

o NW main to N main A

256 / massive grey vol ss, m-cgr
mt. A570 / (52-12) massive green vol. ss,
mt.918 / dark grey green vol. ss,
massive mt.

1190 / SS as above.

1907 / (52-13) SCo - rounded clasts
2-8cm granites & vol-
canic. sandy matrix, m-cgr.
Kona Am.2307 / road benches to be traced
to the W - up hill westo
385 / end of road - log landing

Oct 16/82 SM

(3)

6 at junction reset to 0

224 end of road - slide
covers road220 road 300' junction to the
W. up hill slightly -
go to the NW.348 road to the right -
continue straight uphill

756 / grey siltstone mt, WR

2246 / 560 rounded clasts 3 - 25 cm
sandy brown egr matrix,
wcd2644 spur to the left (SW)
continue straight

3174 end of road

719.9 gain down Br 122

720.3 (S20E14) 2' bedded SS & SC,
SS had grey ingr. SC
& rounded pebbles & bobbles
2 - 3 cm just sandy matrix
support. Sandy in-egr
matrix.

Oct 16 182

SM

(3)

720.3

end of road
0

2018

plod very sessile if dry
- w/ interbedded roots
grey ss

2296

end of road - westward

2302
1752

Oct 17/82

SM

①

road required to cross well
J.H. Down Deer Creek

S2-15 to S2-17

o junction of South Bay Point
Deer Creek

375 m - 761.54

761.61 Br 60 to the S.

762.3 S2-15 Sco clast supported,
rounded volcanic + granitic
clast 5-20 cm, sandy cgr
matrix.

762.6 1 Sco as above. from large
cliff 30' high.

762.8 1 Sco as above

763.2 Sco with 4-5 m ss interbeds.

763.3 Dirty, green ss, essentially
weathered cgr.

Oct 17/82

SM

(2)

763.43 / mile 3 Sco as above

764.25 / Sco

764.55 / Deer Bridge (52-16) grey ss,
m-hr, mt, carbonaceous
fleck throughout765.25 / green fine gr. quartz
massive, mt wear -
no visible bedding766.55 (52-17) Sco rounded pebbles
1-4 cm, sandy matrix
black, highly manganese,
small quartz

766.95 B, id, it.

767.4 Bed Sar, mt, no visible
bedding, wear, W side of V

772.0 / Deer W turn off of Deer M

773.2 / green sandstone - massive, at
piled up fossils, massive,
green, mt

773.75 grey shale, it, ab ca shales,

Oct 17/82

SM

③

774.25

grey willow, W. r. in M102,
h₁, concordal weathering

775.0

grey A. p. mt.

775.1

A. p.

775.25

Ap. in large quarry mt. w ca
slabs,

776.2

sun around foot no
% c

APRIL 30, 1982

SM CALLISTER

Rennell Sound Area

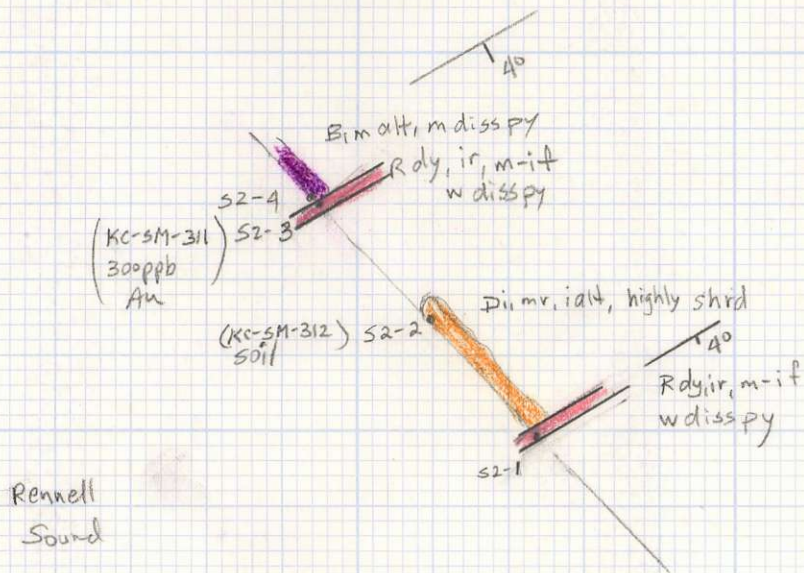
RS-S2-1 to RS-S2-4

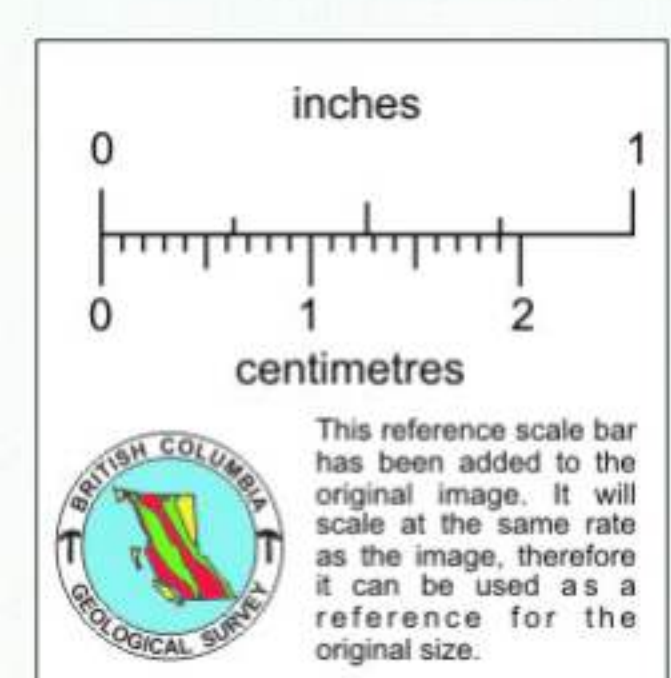
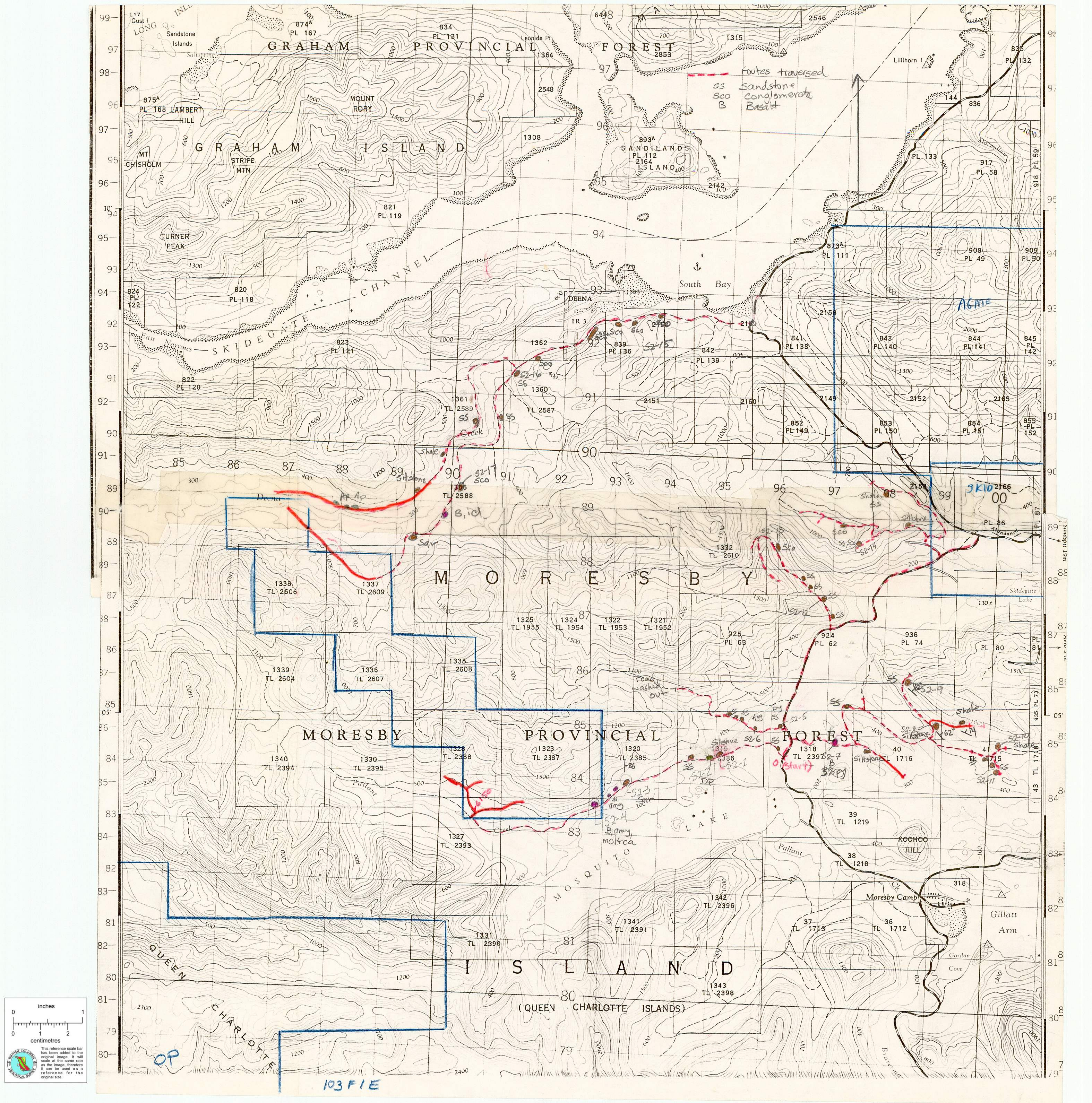
ROCKS

Rennell Sound

1:20,000

1:500 sketch.





103 FIE