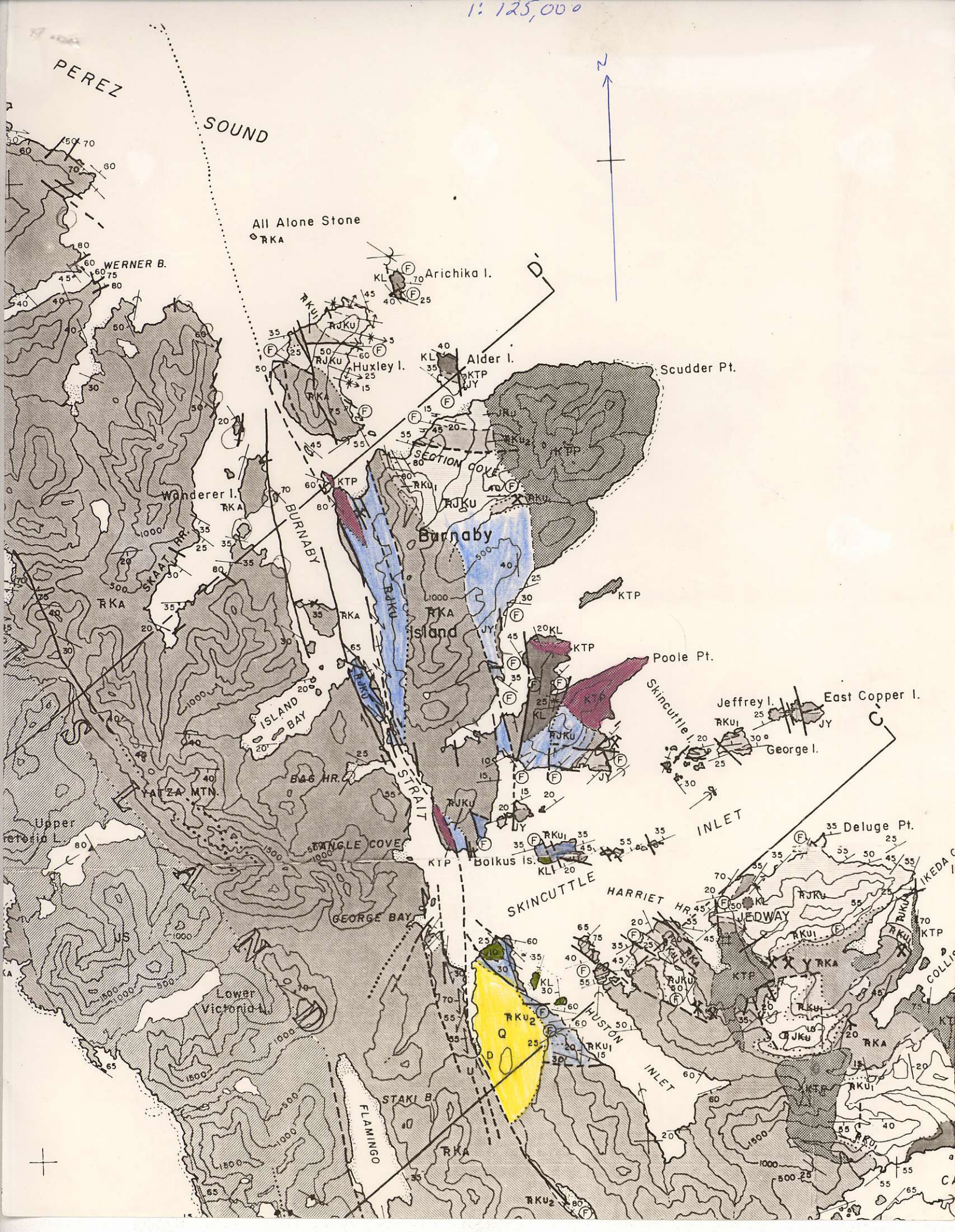


The Burnaby Strait and Slim Inlet areas are dissected by a major strand of the Louscoone-Rennell Sound fault and various splays of the same. On Alder Island to the north of Burnaby Island a gold showing has been found within a siliceous to quartz breccia zone within the thinly bedded black limestone of the Kunga Formation. Visible gold has been reported from this location (J.T.Shearer, Assesment report for the Alder Gold goup of claims).

There are a number of areas of open ground that are cut by the major fault and where the Kunga and Karmutsen are in fault contact. A few 'post-tectonic' plutons have been mapped along the fault on Burnaby Island.

The showings present on Burnaby Island are primarily of magnetite and or chalcopyrite skarn type mineralization.

1:125,000



PEREZ SOUND

All Alone Stone  
RKA

Arichika I.  
KL 70  
F 25

Alder I.  
KL 40  
F 35  
JY

Scudder Pt.

Burnaby

Island

Poole Pt.

Jeffrey I.

East Copper I.

George I.

GEORGE BAY

SKINCUTTLE

HARRIET

JEDWAY

IKEDA C

Lower Victoria I.

STAKI B

HUSTON INLET

DELUGE PT.

FLAMINGO

FLAMINGO

FLAMINGO